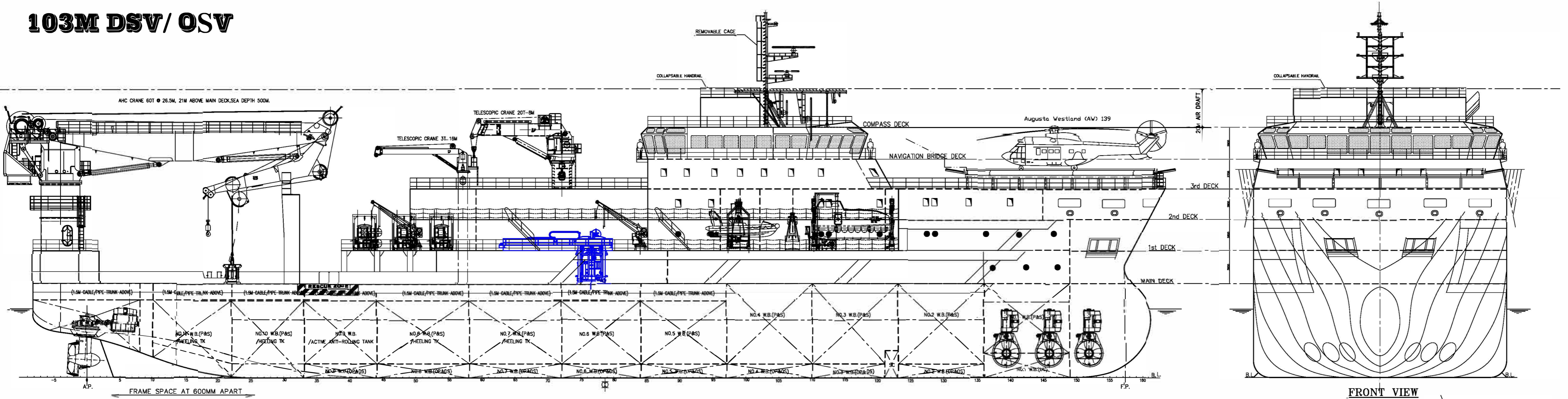
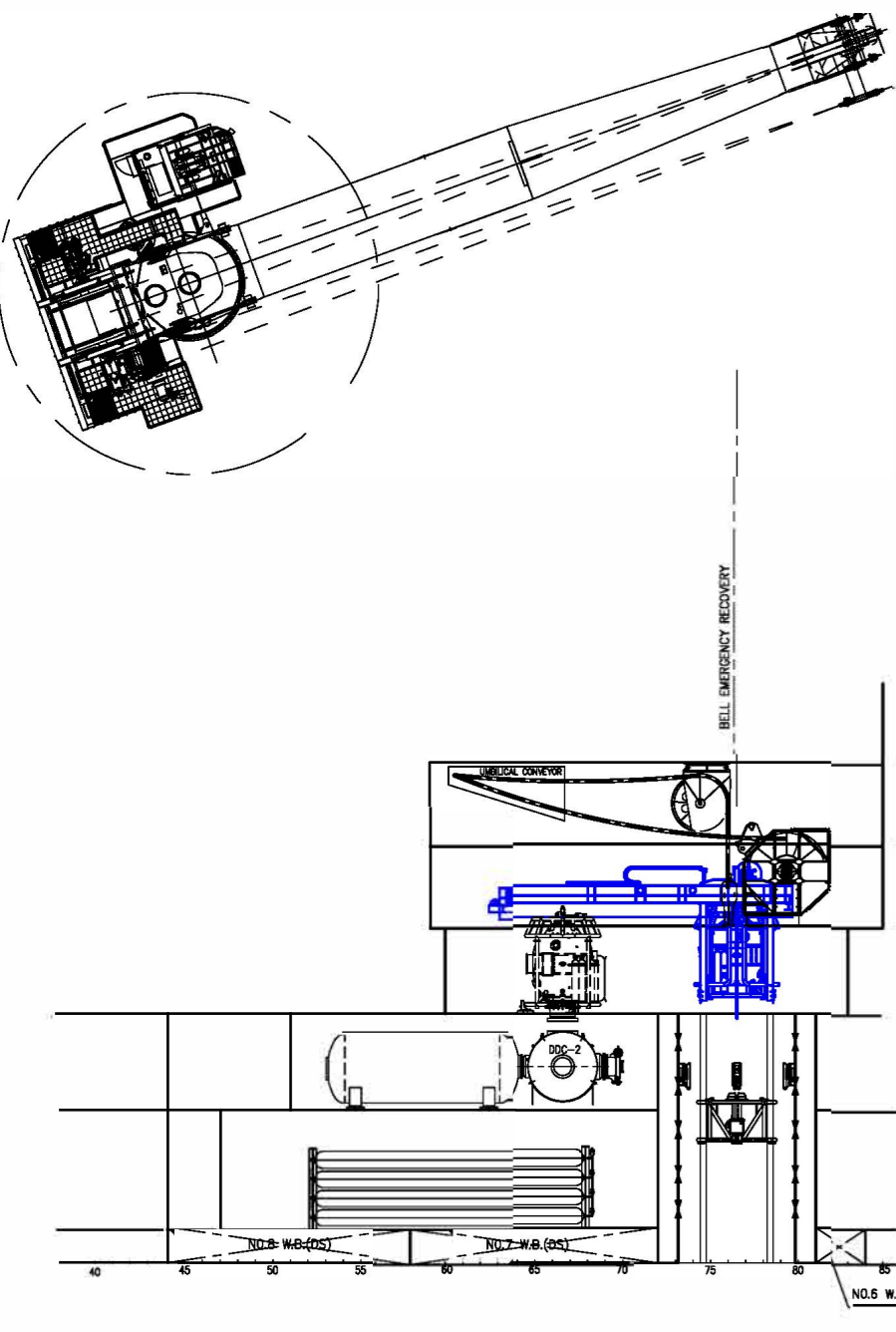




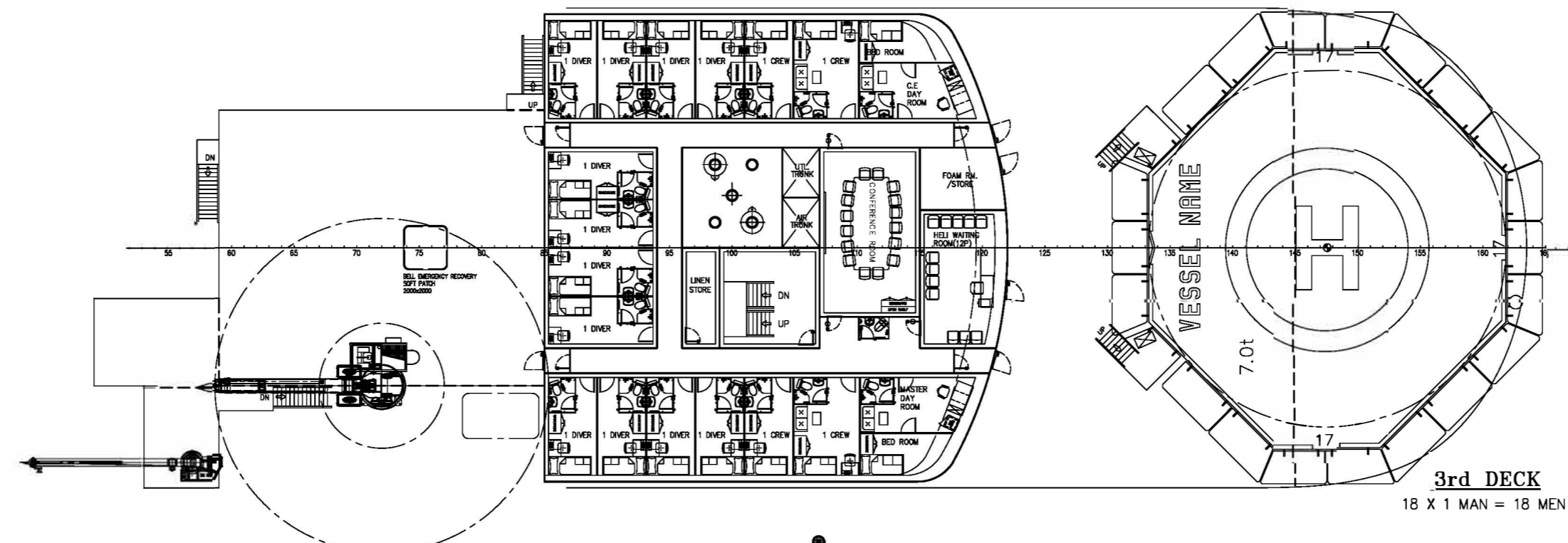
# 103M DSV / OSV



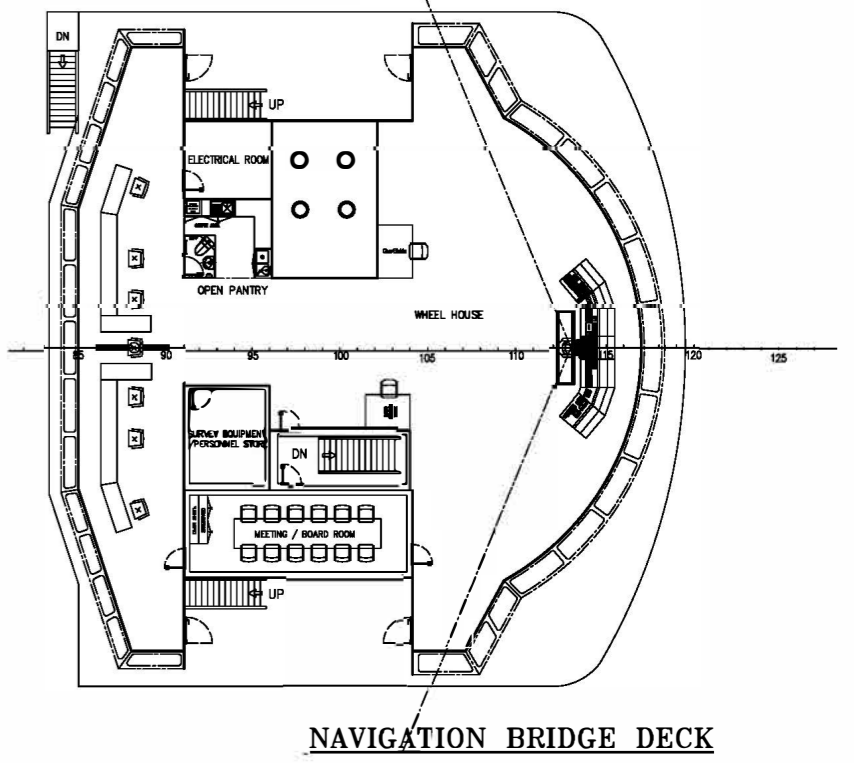
FRONT VIEW



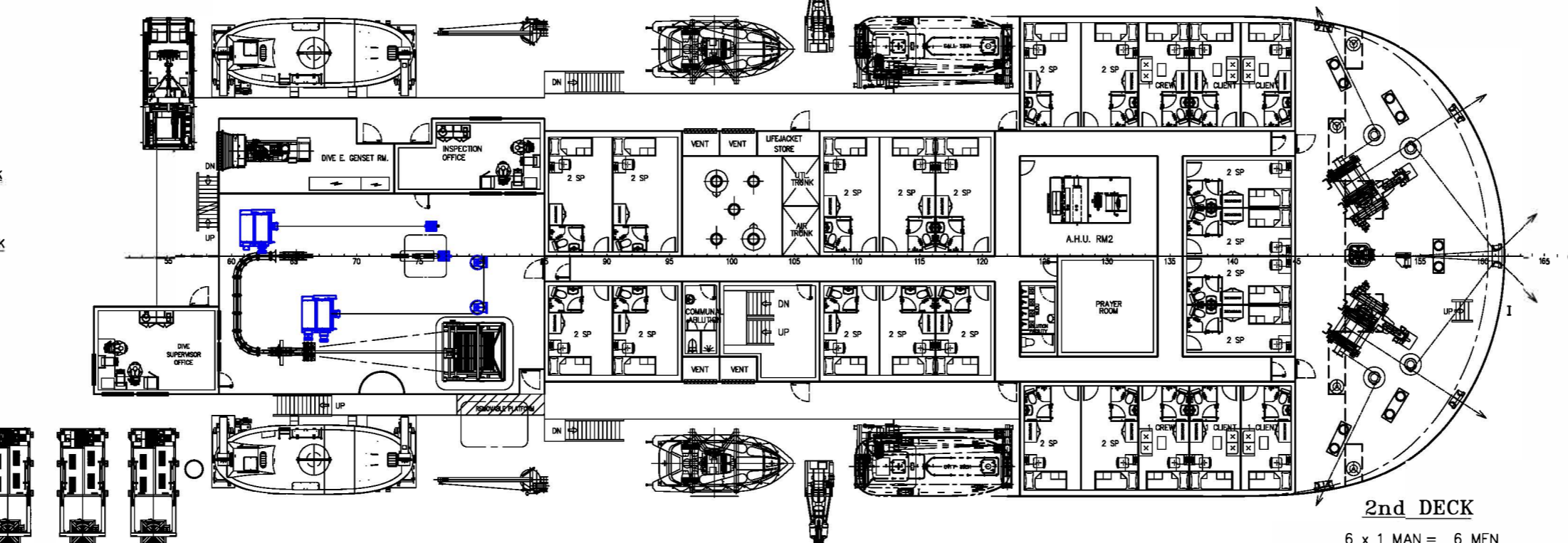
SAT DIVE PROFILE VIEW



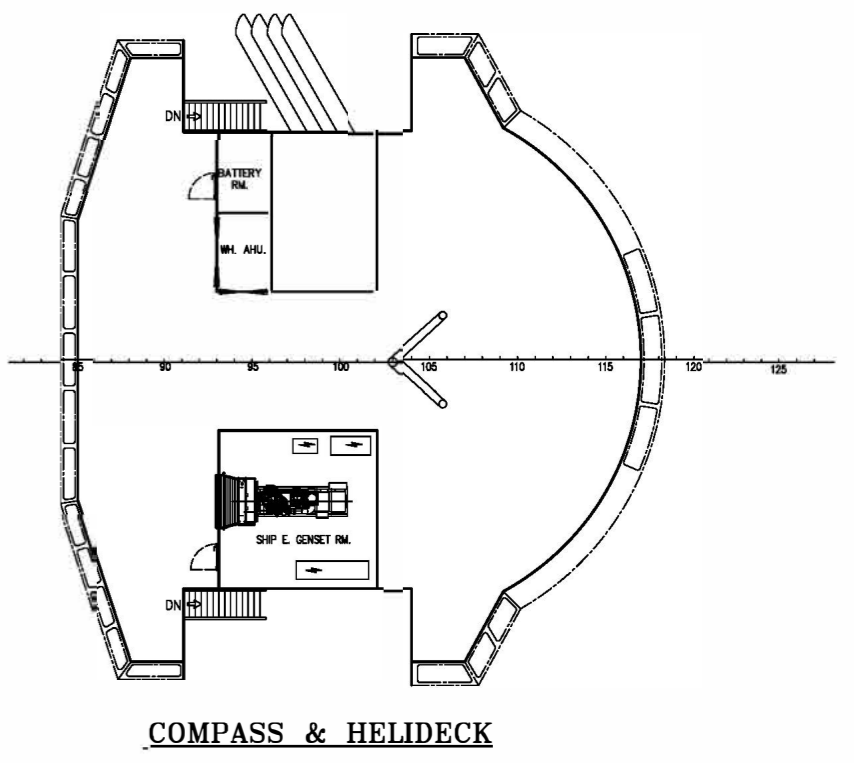
3rd DECK  
18 x 1 MAN = 18 MEN



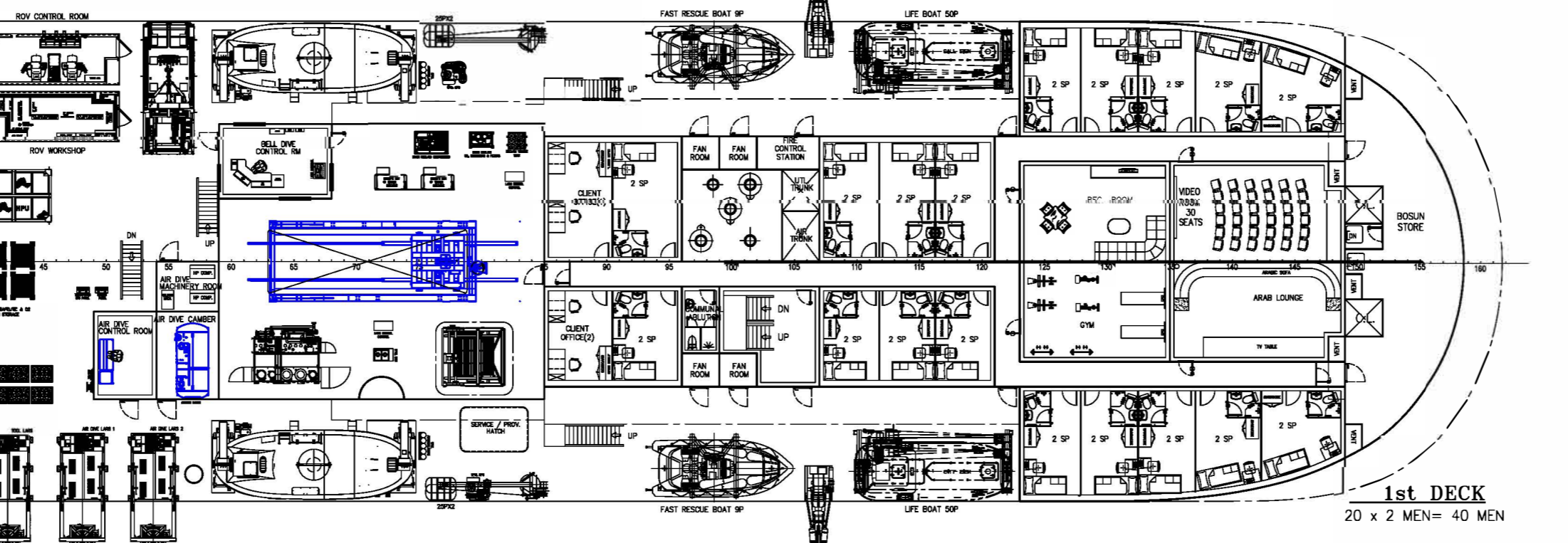
NAVIGATION BRIDGE DECK



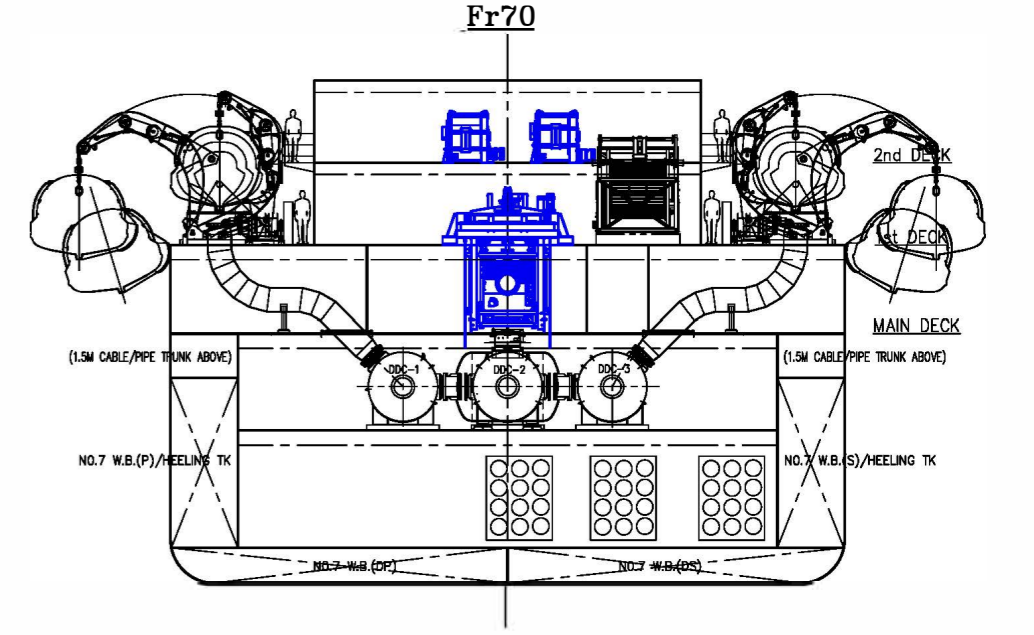
2nd DECK  
6 x 1 MAN = 6 MEN  
18 x 2 MEN = 36 MEN  
TOTAL = 42 MEN



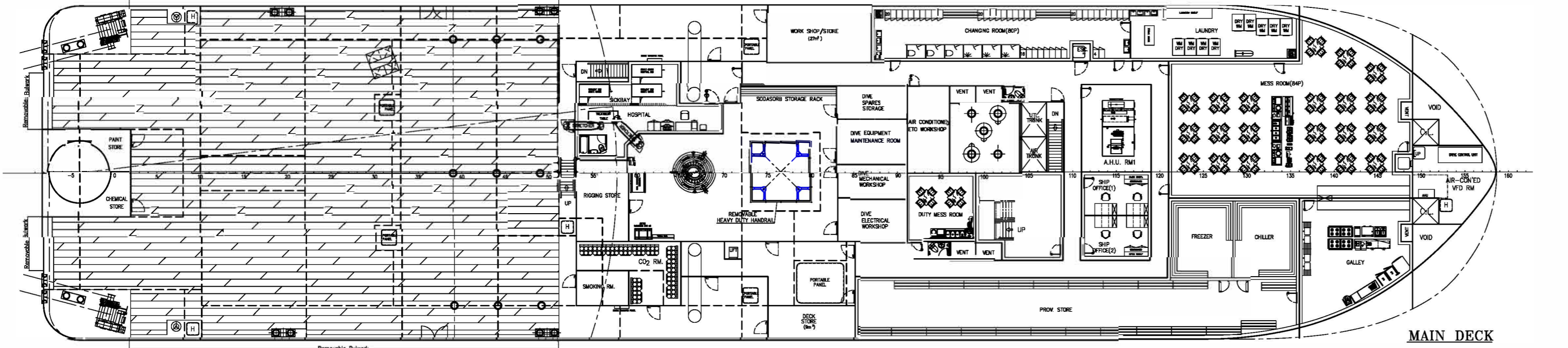
COMPASS & HELIDECK



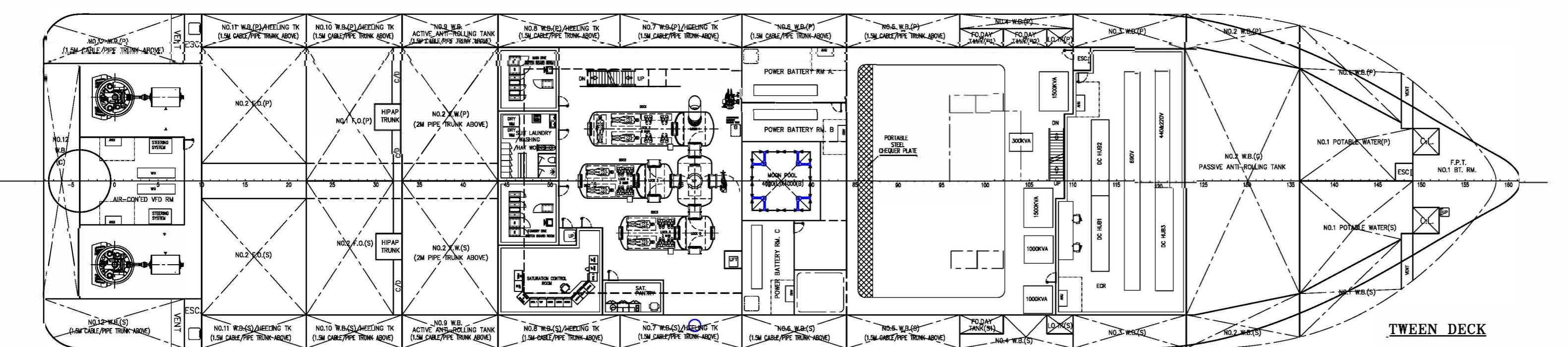
1st DECK  
20 x 2 MEN = 40 MEN



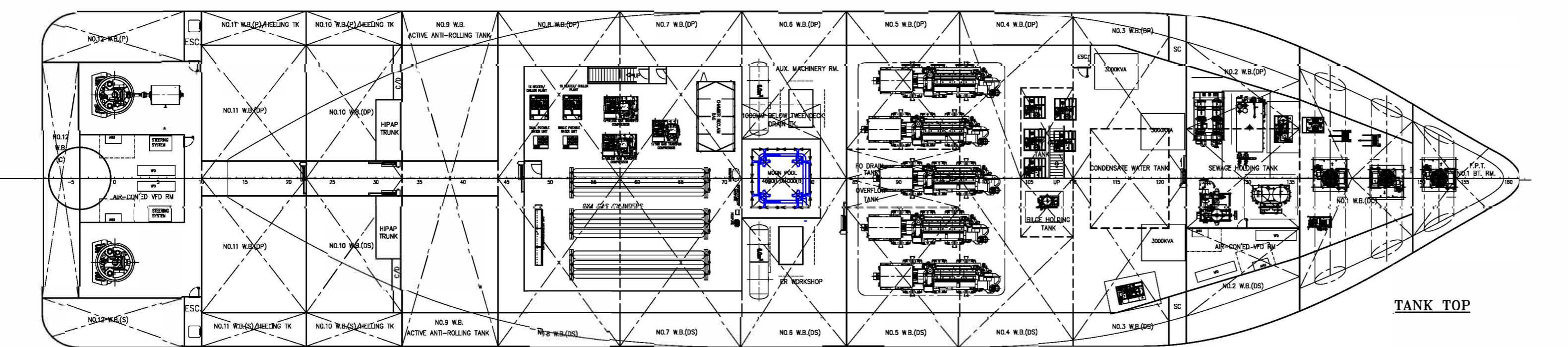
Fr70



MAIN DECK



TWEEN DECK



TANK TOP

## PRINCIPAL PARTICULARS & CAPACITIES

|                       |                    |               |                      |
|-----------------------|--------------------|---------------|----------------------|
| LENGTH OA             | 103.00 M           | F.O.          | 1,000 M <sup>3</sup> |
| LENGTH BP             | 94.40 M            | F.W.          | 600 M <sup>3</sup>   |
| BEAM MLD.             | 23.00 M            | W.B.          | 2,500 M <sup>3</sup> |
| DEPTH MLD.            | 8.50 M             | MAIN GENSETS  | 5 X 2,320 KW         |
| S.L.L. DRAFT          | 6.18 M             | POWER BATTERY | 3 X 565 KW           |
| SCANTLING DRAFT       | 6.40 M             | AZIMUTH PROP  | 2,200 KW X 2         |
| COMPLEMENT            | 100 MEN            | BOW THRUSTER  | 1,300 KW X 3         |
| TRIAL SPEED @ 85% MCR | 10 KTS             |               |                      |
| CLEAR DK SPACE        | 600 M <sup>2</sup> |               |                      |

## ABS \*A1 ⓔ OFFSHORE SUPPORT VESSEL

- (DSV AIR / SAT, ROV)
- SPS
- \*AMS, ESS-LIBATTERY
- \*ACCU
- \*DPS-2
- BWT
- UWILD 7.5
- MLC-ACCOM
- HELIDK
- ENVIRO, IHM
- CR
- SMART(INF,SHM(TIER 1),MHM(TIER 2))
- CR(C-HC-SUBSEA, PL)
- RW
- PMP
- HIMP
- HYBRID IEPS [LEE, PMT, PBU, SCN]

## PRELIMINARY

|         |  |          |             |
|---------|--|----------|-------------|
| 4       | AMENDED AS CLIENT'S COMMENTS             | YP       | APR-30-2025 |
| 3       | AMENDED AS CLIENT'S COMMENTS             | YP       | MAR-22-2025 |
| 2       | AMENDED AS CLIENT'S COMMENTS             | YP       | DEC-21-2024 |
| REV NO. | REVISION DESCRIPTION                     | BY       | DATE        |
| OWNER   |  |          |             |
| BUILDER |  |          |             |
| PROJECT | 103M ROV / DIVING SUPPORT VESSEL "532LT" |          |             |
| APPROVE | DWG TITLE: GENERAL ARRANGEMENT           | JOB NO.: | P-2293      |
| VERIFY  |  | DWG NO.: | P-2293-001  |
| CHECKER |  | SCALE:   | 1:250(A1)   |
| DRAWER  | YP                                       | CLASS:   | ABS         |