



REGISTRATION

GRT / ITC	1,751
Net	525
Classification	ABS
Year Built	2010
Flag	USA
Certifications	Subchapter L&I, SOLAS, and ACP
Notation	✠A1, ✠AMS, ✠DPS-2

MAIN CHARACTERISTICS

Length overall	240 ft	(73.1 m)
Beam	56 ft	(17.1 m)
Depth	18 ft	(5.5 m)
Max Draft	15.5 ft	(4.6 m)
Min Draft	7 ft	(2.1 m)

PERFORMANCE

Max Speed	12 knots	182 gal/hr	(689 l/hr)
Cruising Speed	10 knots	117 gal/hr	(442.9 l/hr)
DP		62 gal/hr	

MACHINERY

Main Engines	2 x Cummins QSK-60/Becker Rudders
Total Horsepower	4,400 BHP
Main Propulsion	Conventional Wheels
Total Horsepower	5,150 BHP
Main Generators	2 x Cummins 6c
Total Rating	402 kW
Bow Thrusters	2 X Schottel CPP Tunnel
Total Horsepower	2,000 BHP
Stern Thruster	1 X Schottel CPP
Total Horsepower	1,000 BHP
Emergency Generator	480V/60Hz
Total kW	175

CAPACITIES AND DISCHARGE RATES

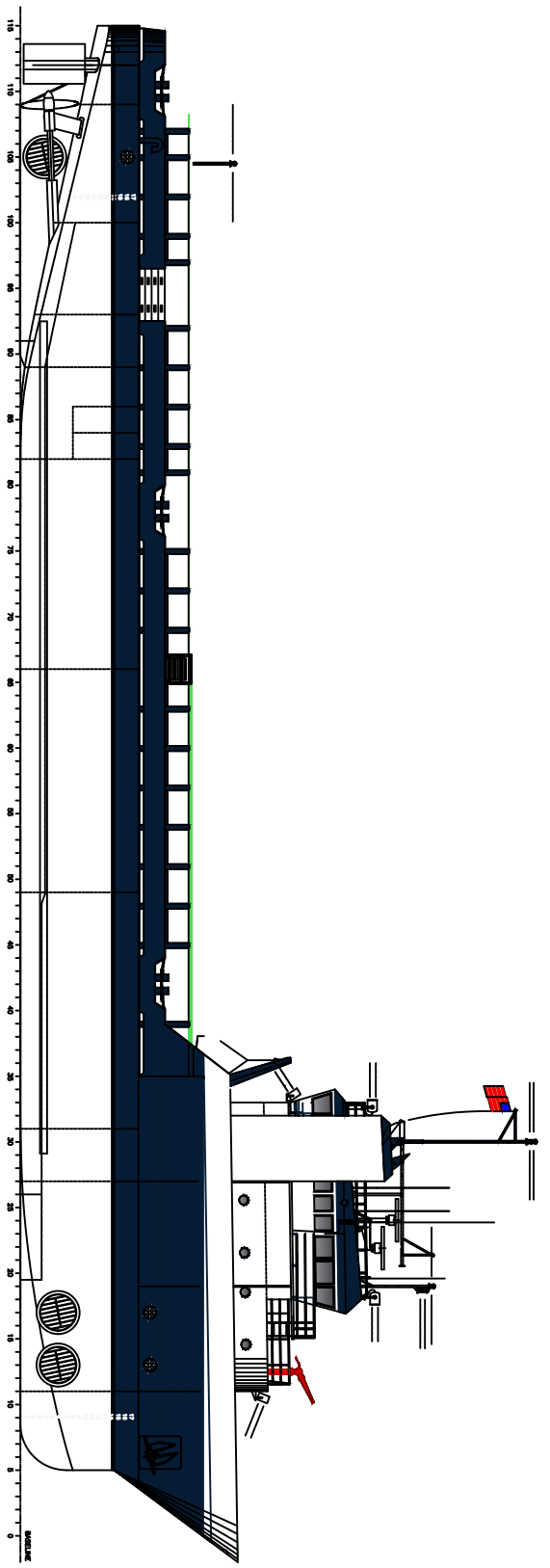
Deadweight	2,730.23 Lt	(2,567 Mt)		
Deck Strength	540 lbs/ft ²	(2.06 t/m ²)		
Cargo Deck Area	150 ft x 46 ft	(6,900 ft ²)		
	45.1 M X 13.7 M	(617.9 M ²)		
Drill/Rig Water	337,856 USG	(1,279 M ³) 100%	Discharge Rate	650 GPM (148 M ³ /hr)
Fuel	78,790 USG USG	(705 M ³) 100%	Discharge Rate	650 GPM (148 M ³ /hr)
Liquid Mud	6,336 Bbls	(1,545 M ³) 100%	Discharge Rate	750 GPM (170 M ³ /hr)
(Multiple Tank Configurations with Segregated Fills and Discharges)				
Dry Bulk (4) tanks	6,212 ft ³	(175.9 M ³) 100%	Discharge Rate	1,680 ft ³ /hr (48 M ³ /hr) (80 psi)
Potable Water	21,491 USG	(88.9 M ³)		
Fire Pump	1 X 2,600 GPM		Discharge Rate	900 GPM (148 M ³ /hr)

ELECTRONICS

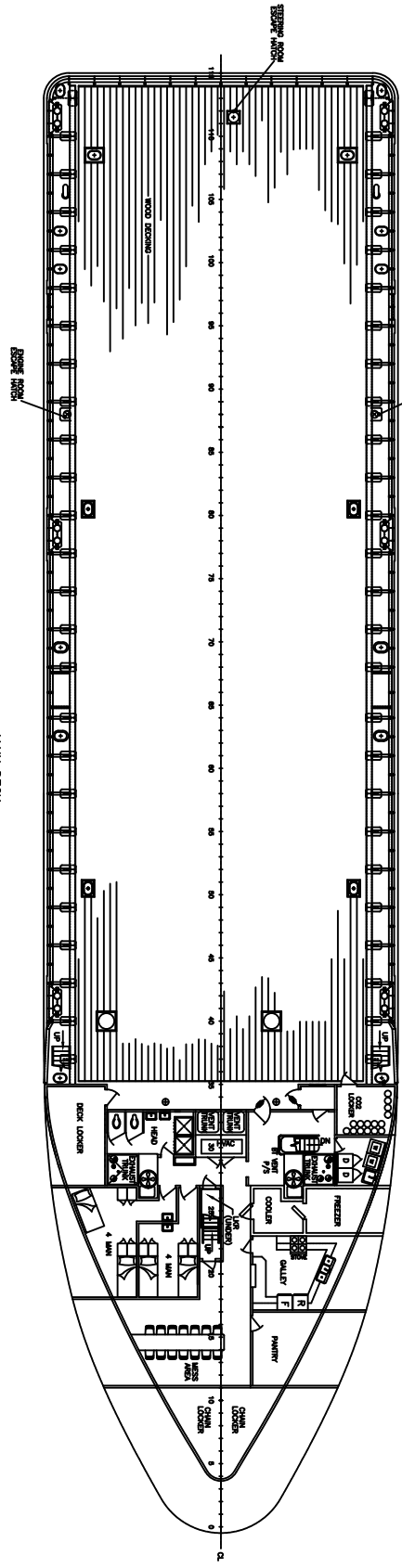
(2) Kongsberg K-POS DP - 2 Systems
 Full Auto with Full and Mixed Joystick Mode
 C-Joy
 Alarm Printer
 Multi Targets
 (2) DGPS Receivers
 (1) MDL Fan Beam
 (3) Gyro compasses
 (3) Wind sensors
 (3) MRU
 (2) Radars
 GMDSS
 (4) VHF Radios
 (2) SSB Radios
 (1) Bridge Navigation Watch
 Alarm System
 (1) Radius 1000 Interrogator
 (1) Radius 700 Transponder

ACCOMMODATIONS

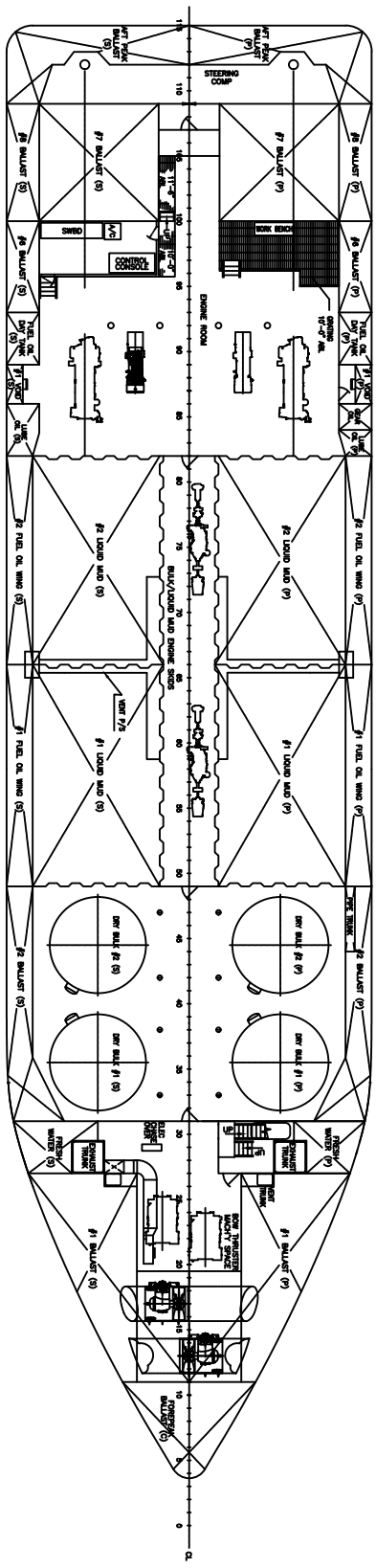
Max Capacity 18 people
 (2) 1 Person Room
 (4) 2 Person Room
 (2) 4 Person Room



OUTBOARD PROFILE



MAIN DECK



HOLD PLAN