



REGISTRATION

GRT / ITC	1,751
Net	525
	ABS
Classification	2010
Year Built	USA
Flag	
Certifications	Subchapters L&I, SOLAS and ACP
Notations	⊠ A1, ⊠ AMS, ⊠ DPS-2

MAIN CHARACTERISTICS

Length overall	240 ft	(73.1 m)
Beam	56 ft	(17.1 m)
Depth	18 ft	(5.5 m)
Max Draft	15.5 ft	(4.6 m)
Min Draft	7 ft	(2.1 m)

PERFORMANCE

Max Speed	12 knots	182 gal/hr	(689 l/hr)
Cruising Speed	10 knots	117 gal/hr	(442.9 l/hr)
DP		62 gal/hr	

MACHINERY

Main Engines	2x Cummins QSK-60
Total Horsepower	4,440 BHP
Main Propulsion	Conventional Wheels
Total Horsepower	5,150 BHP
Main Generators	2x Cummins 6c
Total Rating	402 kW
Bow Thrusters	2 X Schottel CPP Tunnel
Total Horsepower	2,000 BHP
Stern Thruster	1 X Schottel CPP Tunnel
Total Horsepower	1,000 BHP
Emergency Generator	480V/60Hz
Total kW	175

CAPACITIES AND DISCHARGE RATES

Deadweight	2,832 Lt	2,567 Mt
Deck Strength	540 lbs/ft ²	(2.06 t/m ²)
Cargo Deck Area	150 ft x 46 ft	(6,900 ft ²)
	45.1 M X 13.7 M	(617.9 M ²)
Drill/Rig Water	337,856 USG	(1,279 M ³)
Fuel	78,790 USG 100%	(705 M ³)
Liquid Mud	6,336 Bbls	(1,545 M ³) 4 tanks
(Multiple Tank Configurations with Segregated Fills and Discharges)		
Dry Bulk (4) tanks	6,212 ft ³	(175.9 M ³) 4 tanks
Potable Water	21,491 USG	(88.9 M ³)
Fire Pump	1 x 2600 GPM	

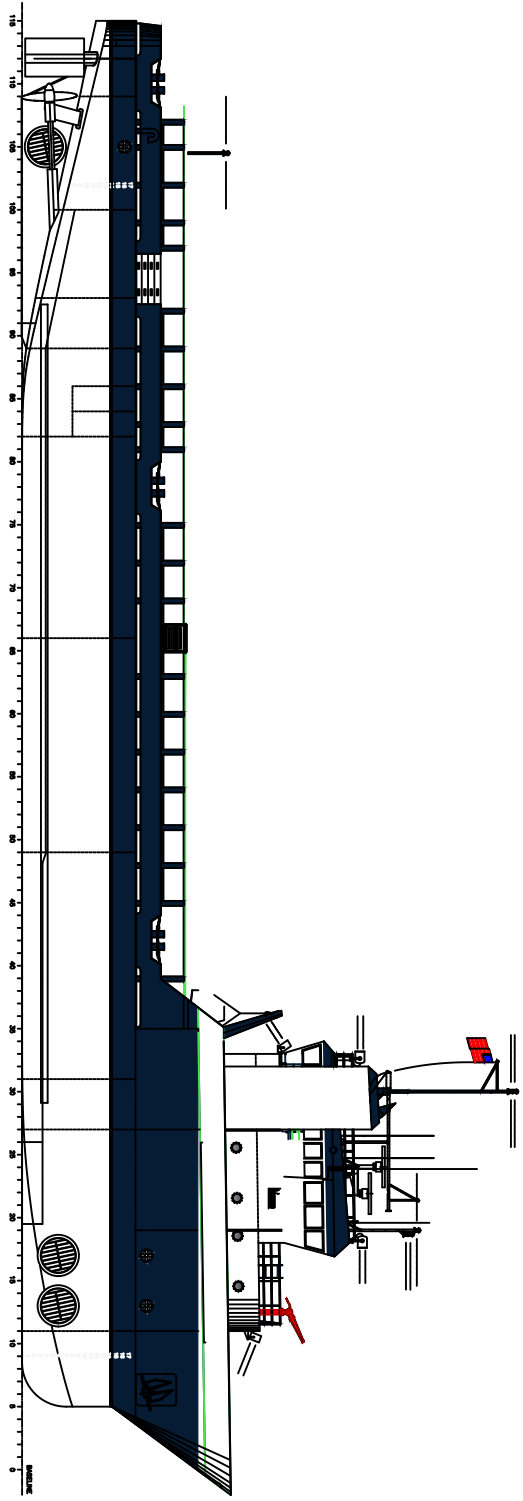
ELECTRONICS

(2) Kongsberg K-POS DP - 2 Systems
 Full Auto with Full and Mixed Joystick Mode
 C-Joy
 Alarm Printer
 Multi Targets
 (2) DGPS Receivers
 (1) MDL Fan Beam
 (3) Gyro compasses
 (3) Wind sensors
 (3) MRU
 (2) Radars
 GMDSS
 (4) VHF Radios
 (2) SSB Radios
 (1) Bridge Navigation Watch
 Alarm System
 (1) Radius 1000 Interrogator
 (1) Radius 700 Transponder

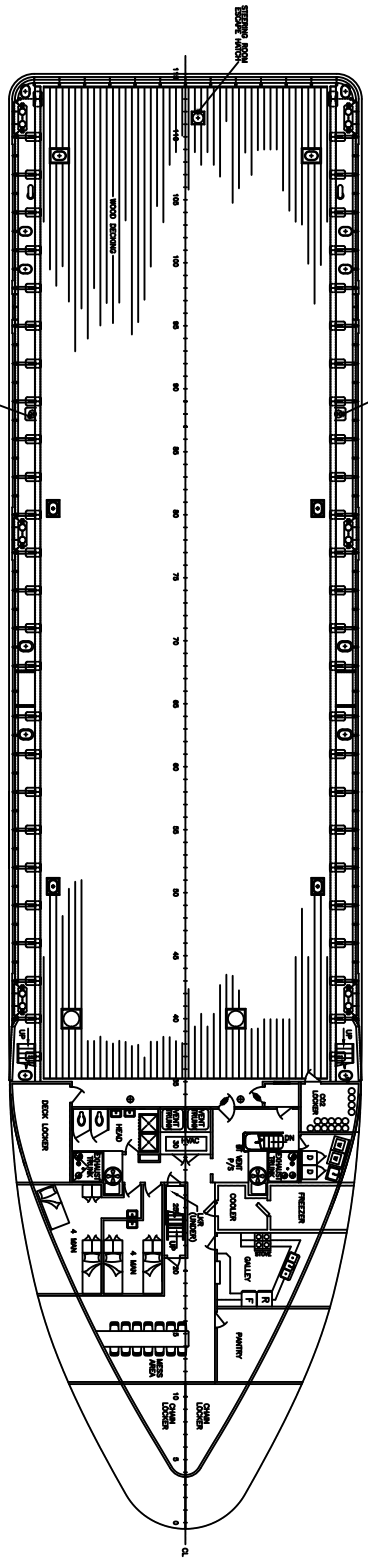
ACCOMMODATIONS

Max Capacity 18 people
 (2) 1 Person Room
 (4) 2 Person Room
 (2) 4 Person Room

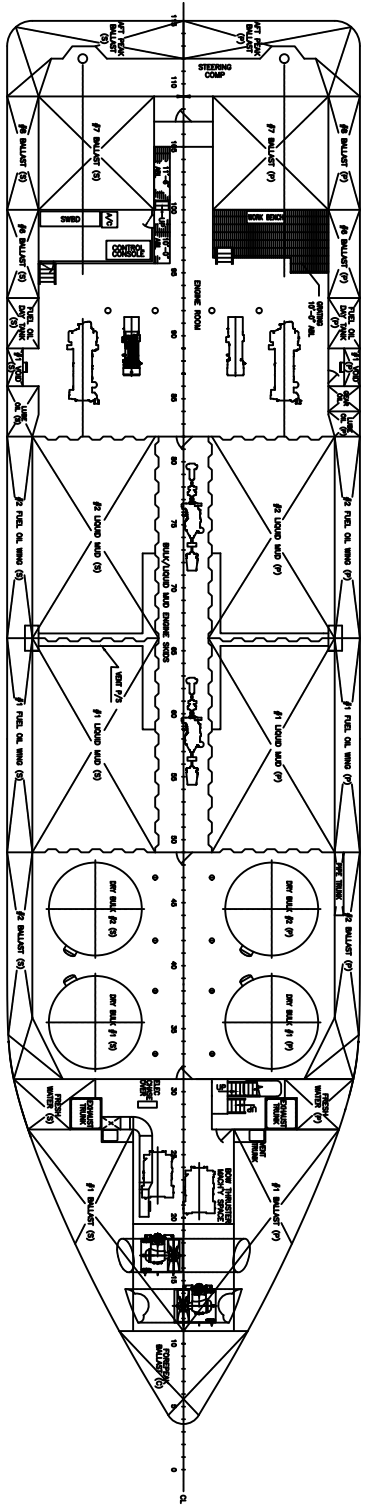
Discharge Rate	650 GPM	(204 M ³ /hr)
Discharge Rate	650 GPM	(148 M ³ /hr)
Discharge Rate	800 GPM	(408 M ³ /hr)
Discharge Rate	1,000 ft ³ /hr	(48 M ³ /hr) 80psi
Discharge Rate	900 GPM	(148 M ³ /hr)



OUTBOARD PROFILE



MAIN DECK



HOLD PLAN