

130' Liftboat

Overview

LEG

Leg Length	130 ft
Leg Diameter (Od)	42 in
Leg Tower Height	15 ft

HULL

Length (Overall)	87.5 ft
Length (Barge Only)	75 ft
Beam (Overall)	61 ft
Beam (Barge Only)	36 ft
Hull Depth	7 ft

PAD

Length	24 ft
Width	12 ft
Depth	2 ft
Bearing Load	3,000 lbs/ft ²
Design	4-Way Slope

CRANE

	Port	Starboard
Load Rating	10 ton	45 ton
Make	EBI	Crown Point
Model	C20B-50	CP 95KTB 1DE
Boom Type	Fixed	Telescopic
Boom Length	50 ft	70 ft
Crane Inst. Type	Deck Mount	Deck Mount

PROPULSION

Mains - Make	GM
Mains - Model	12V71
Horsepower	800 hp
Bow Thruster Equipped	No
Clutch Make/Reduction	Twin Disc 3.5:1
Consumption/Engine-Full	19.4 gph
Consumption/Engine-Half	9.7 gph

GENERATORS

Generator Engine Make	GM
Generator Engine Model	4-71
Generator Output	75 kw
Consumption/Gen	6.4 gph

DECK

Total Deck Area	2,505 ft ²
Clear Deck Area	1,412 ft ²
Additional Clear Area	N/A
Maximum Deck Load	150,000

CAPACITIES

Diesel Fuel	4,596 usg
Lube	200 usg
Hydraulic Oil	2,052 usg
Potable Water	5,474 usg
Watermaker Equipped	No

ELECTRONIC AIDS & COMMUNICATION

Compass	Fully Equipped
Gps/Dgps	Fully Equipped
Radar(s)	Fully Equipped
Fathometer	Fully Equipped
Loudhailer	Fully Equipped
Satellite Phone	Fully Equipped
VHF Radio	Fully Equipped
Single Sideband Radio	Fully Equipped
EPIRB	Fully Equipped
GMDSS	No

PERSONNEL ACCOMMODATIONS

Total Accommodations	24
VIP Accommodations	2
Galley & Dining	Fully Equipped
TV Lounge	Fully Equipped
Laundry Facility	Fully Equipped
Air Condition / Heater	Std Central Units

PERFORMANCE

Estimated Speed	5 knots
Max Sep – Pad to Deck	114 ft
Max Working Water Depth	90 ft
Min Working Water Depth	7 ft

DOCUMENTATION

Class	None
Flag/ Port of Registry	USA
USCG	Inspected
SOLAS	No

Registered Tonnage	171
International Tonnage	None

EBI 10 TON CRANE*

C20B-50 50 FT FIXED BOOM MAXIMUM SAFE WORKING LOAD

BOOM RADIUS (ft)	ONBOARD LOAD (lbs.)	OFFBOARD LOAD (lbs.)
10	9,750	9,750
15	9,750	9,750
20	9,750	9,750
25	9,750	8,675
30	9,750	6,575
35	7,888	5,075
40	6,388	4,075
45	5,113	3,225
50	3,988	2,475

*CURRENT CONFIGURATION IS FOR 5 TONS

CROWN POINT 45 TON CRANE*

CP95KTB1DE 70 FT TELESCOPIC BOOM MAXIMUM SAFE WORKING LOAD

50 FT BOOM RETRACTED

BOOM RADIUS (ft)	ONBOARD LOAD (lbs.)	OFFBOARD LOAD (lbs.)
10	80,000	61,990
15	80,000	58,300
20	70,310	46,860
25	58,410	38,940
30	49,750	33,160
35	43,310	28,870
40	38,560	25,700
45	35,730	23,820
50	34,530	23,020

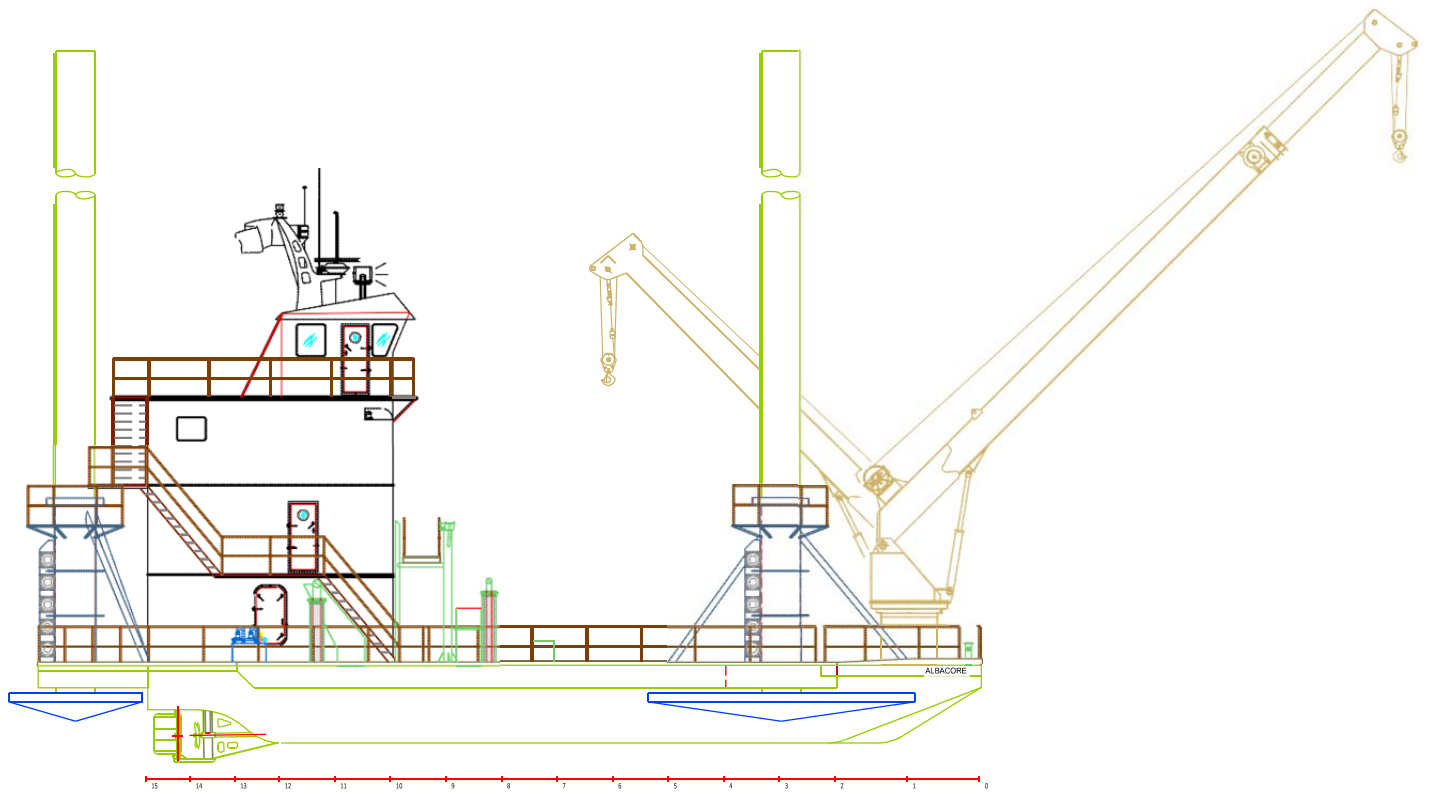
FAST LINES RATED FOR 4,360 LBS. AT ALL RADII

70 FT BOOM EXTENDED

BOOM RADIUS (ft)	ONBOARD LOAD (lbs.)	OFFBOARD LOAD (lbs.)
10	68,060	40,920
15	50,460	33,220
20	39,660	26,040
25	32,380	21,200
30	27,140	17,710
35	23,200	15,100
40	20,150	13,060
45	17,710	11,440
50	15,730	10,120
55	13,110	9,250
60	12,780	8,170
65	11,800	7,510
70	11,285	7,040

FAST LINES RATED FOR 2,821 AT ALL RADII

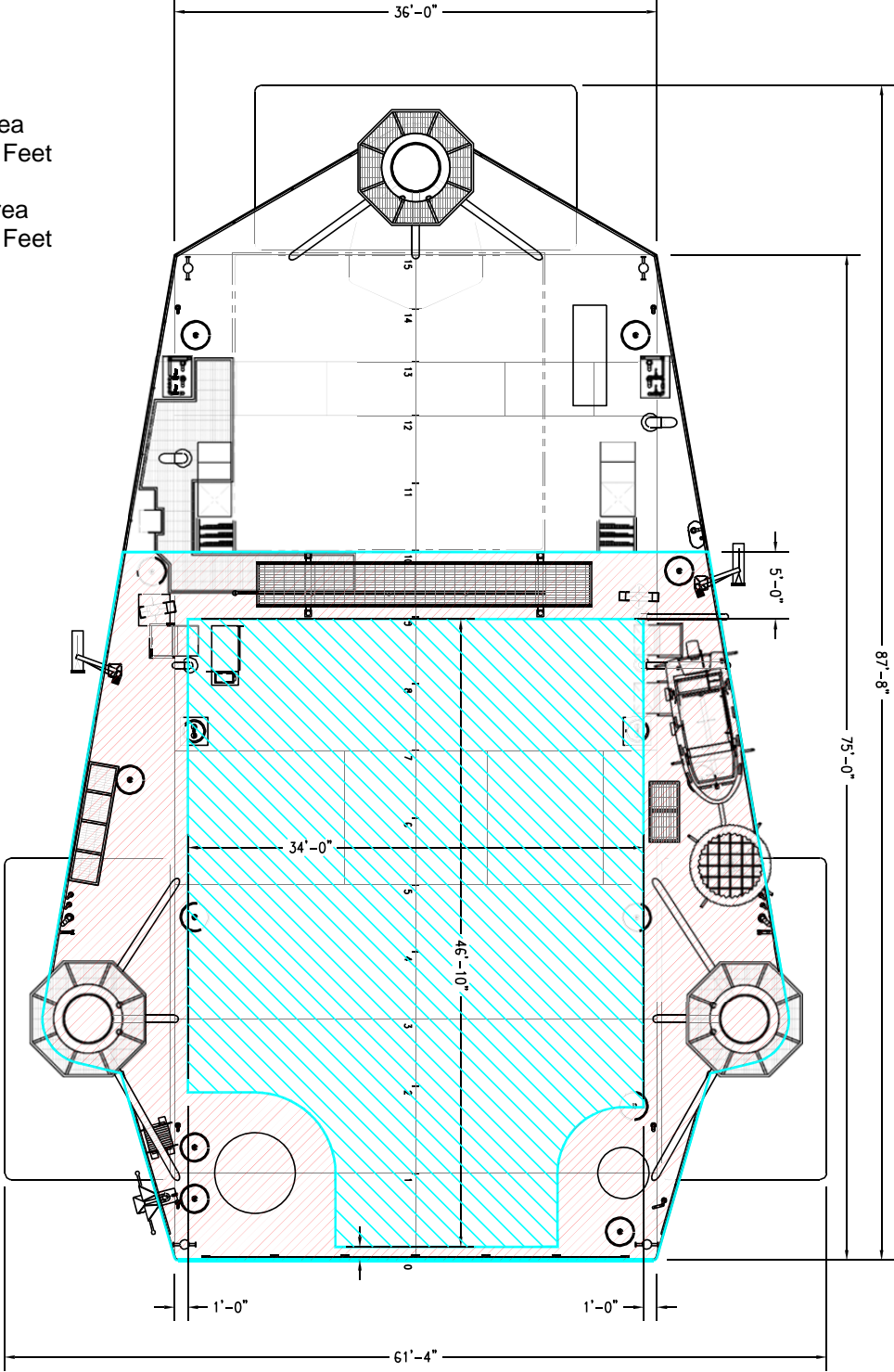
*CURRENT CONFIGURATION IS FOR 40 TONS



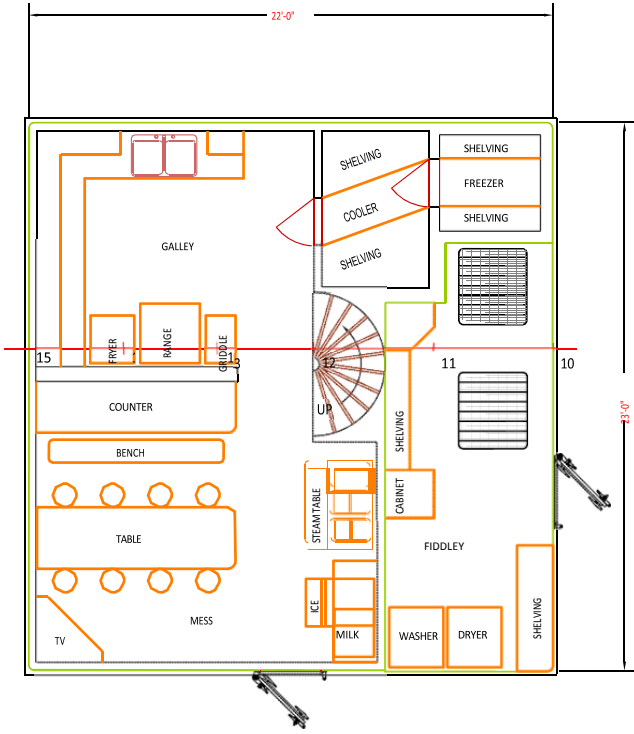
Open Deck Area

Total Deck Area
2,505 Square Feet

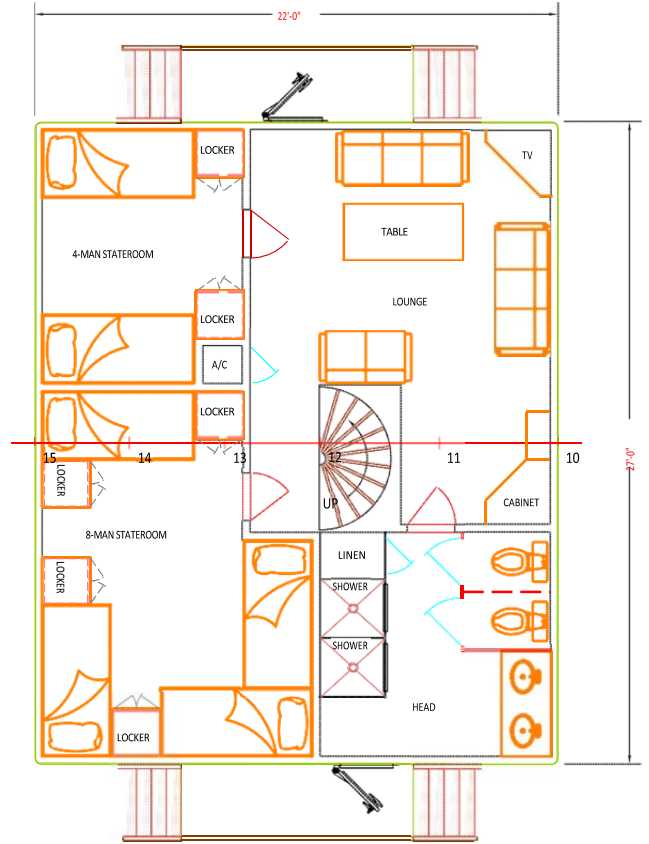
Clear Deck Area
1,412 Square Feet



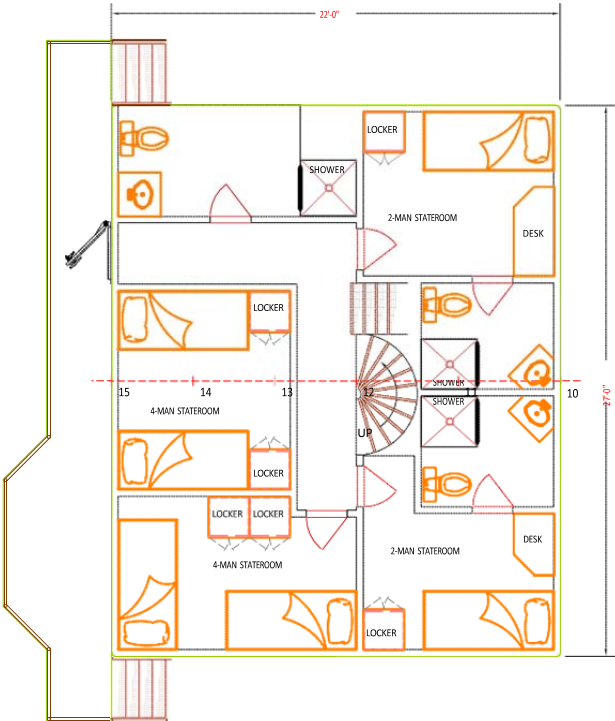
Main Deck Level Living Quarters



01 Deck Level Living Quarters



02 Deck Level Living Quarters



03 Deck Level Living Quarters

