



## 2015 PLATFORM SUPPLY VESSEL

### Vessel Characteristics

Length, Overall:	272 ft	82.9 m
Beam:	58.1 ft	17.7 m
Depth:	20 ft	6.1 m
Maximum Draft:	16.4 ft	5 m
Light Draft:	6.9 ft	2.1 m
Minimum Height:	85.1 ft	25.9 m
Freeboard:	3.3 ft	1 m
Displacement:	5,640 lt	5,730 mt
Deadweight:	3,520 lt	3,570 mt
Clear Deck Space:	190 x 51 ft	58 x 16 m
Clear Deck Area:	9,450 ft <sup>2</sup>	880 m <sup>2</sup>
Deck Strength AFT:	1,020 lb/ft <sup>2</sup>	5 t/m <sup>2</sup>
Class Notations:	ABS: +A1, OSV, (E), +AMS, +ACCU, +DPS-2, ENVI-RO, UWILD	

Tonnage (ITC): 2918 GT 1310 NT

### Capacities

Deck Cargo:	2,250 lt	2,290 t
Fuel Oil:	249,000 gal	940 m <sup>3</sup>
Potable Water:	33,100 gal	130 m <sup>3</sup>
Fresh Water:	437,000 gal	1,650 m <sup>3</sup>
Drill/Ballast Water:	61,700 gal	230 m <sup>3</sup>
Bulk Tanks (6 tanks):	9,230 ft <sup>3</sup>	260 m <sup>3</sup>
Liquid Mud (2.7 SG*):	10,800 bbl	1,710 m <sup>3</sup>
*Max Structural Specific Gravity		

# Further specifications

## Machinery

Diesel Electric Vessel			
Propulsive/Total HP:	5,360 / 9,280		
Z-Drives:	Yes		
Propellers (2):	2 x 2000kW FPP		
Kort Nozzles:	2		
Primary Generators (4):	1,730 kw	690 v	60 hz
Driven by:	CAT 3512C		
Secondary Generators (1):	550 kw	690 v	60 hz
Driven by:	CAT C18		
Emergency Generators (1):	95 kw	480 v	60 hz
Driven by:	CAT C4.4		
Bow Thruster (2):	1xBERG BFTT419, 1xHRP 6011RT		
Driven by:	846kW Electric Motor		
Total Thrust:	28.3 st	25.7 mt	

## Deck Equipment

Anchors (2):	4710 LBS AC-14 HHP
Anchor Chain:	250 m of 40 mm chain per side
Windlass:	COASTAL MARINE EQUIP.
Crane (1):	4.5 t @ 6.1 m

## Accommodations

No. of Berths:	36
Cabins:	2x1-man, 15x2-man & 1x4-man
Certified to Carry:	36
Galley seating:	20
Hospital:	Yes

## Performance\*

Fuel Consumption Vs Speed		
Maximum:	25.4 m <sup>3</sup> /day (280 gph) @ 13.5 knots	
Cruising:	14.7 m <sup>3</sup> /day (160 gph) @ 11 knots	
Economical:	11.8 m <sup>3</sup> /day (130 gph) @ 10 knots	
Standby:	1 m <sup>3</sup> /day (11 gph) @ 0 knots	
Range @ 11 Knots:	16,900 nm	
Transfer Rates		
Fuel Oil:	750 gpm @ 230 ft	170 m <sup>3</sup> /h @ 69 m
Fresh Water:	400 gpm @ 230 ft	91 m <sup>3</sup> /h @ 69 m
Drill/Ballast Water:	750 gpm @ 200 ft	170 m <sup>3</sup> /h @ 61 m
Bulk:	25.6 cfm @ 180 ft	43.5 m <sup>3</sup> /h @ 56 m
Liquid Mud:	1000 gpm @ 230 ft	230 m <sup>3</sup> /h @ 69 m

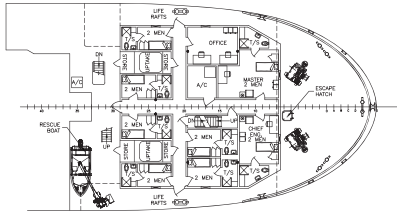
## Nav/Comms Equipment

Radar(s):	2
Depth Sounder:	1
Cyro Compass:	3
Wind Speed Indicators:	3
Doppler Log:	1
Radio:	3 x VHF; 1 x SSB
Sat Com:	1 X FELCOM18

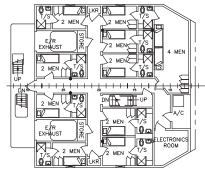
## Special Equipment

Dynamic Positioning:	DP-2
Ref. Systems:	3 x MRU; 3 x DGPS 1 x Microwave-based; 1 x Laser-based
Mud Mixers:	Yes
Tank Cleaning:	Yes
Rescue Boat:	RSQ 450 A
Misc:	MSD - 32 Persons; BHS Water Traps Only

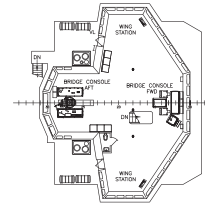
# General Arrangement (Current configuration may vary.)



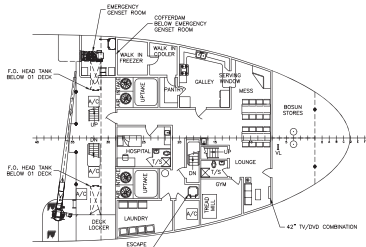
02 DECK PLAN (FOCSLE)



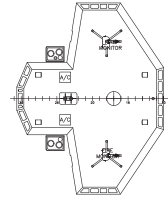
03 DECK PLAN



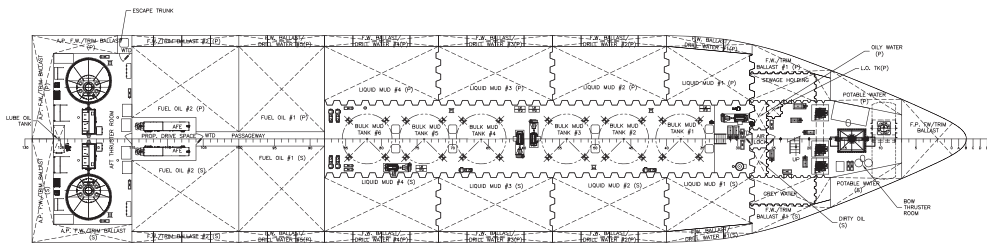
BRIDGE DECK PLAN



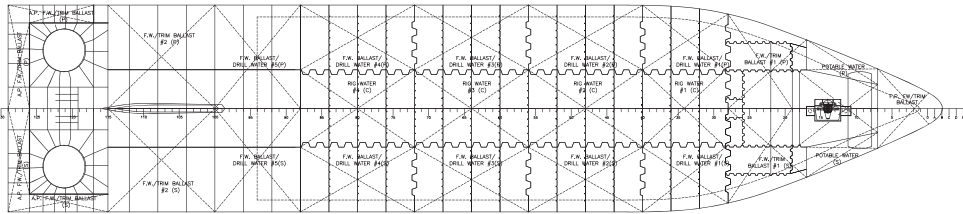
01 DECK PLAN



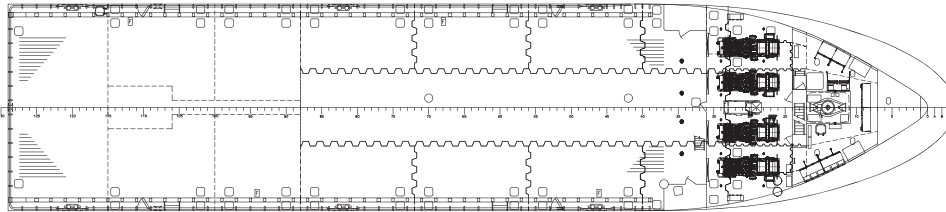
PILOTHOUSE TOP



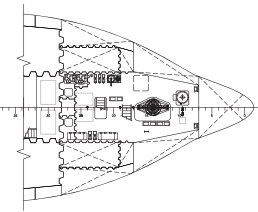
HOLD PLAN



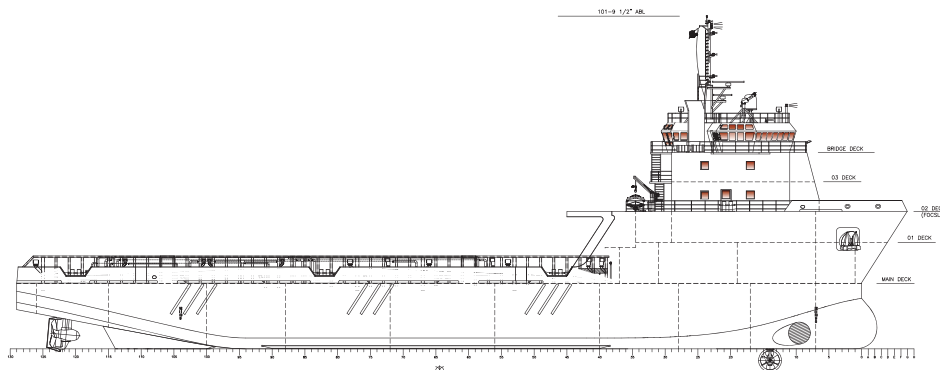
DOUBLE BOTTOM PLAN



MAIN DECK PLAN



FIRST PLATFORM PLAN

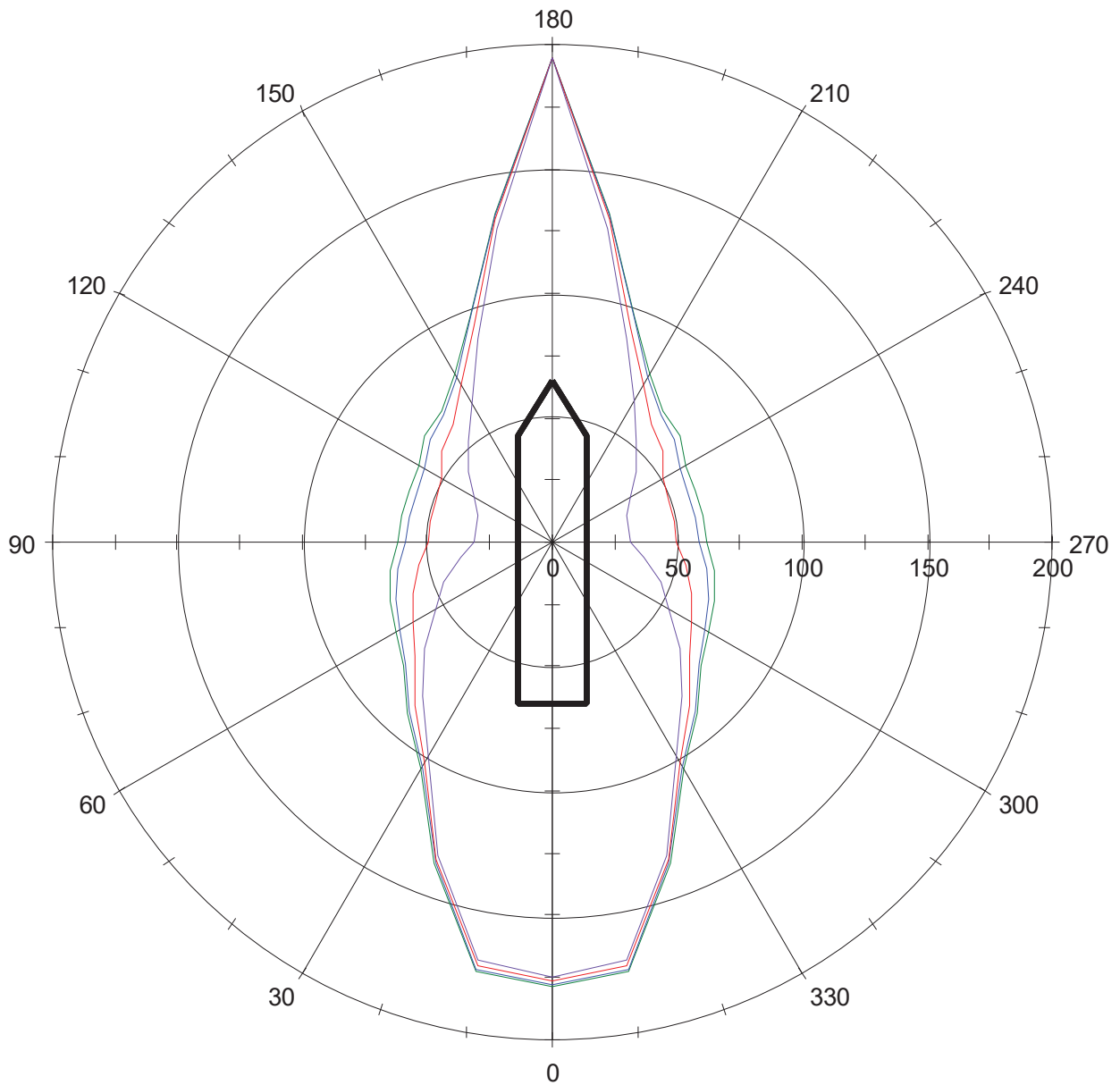


OUTBOARD PROFILE



# DP Capability Plot

**Ship: Thomas-Sea H147**  
**Run : All Online, 100%**



- Wind [knots], Current = 0 knots
- Wind [knots], Current = 1 knots
- Wind [knots], Current = 2 knots
- Wind [knots], Current = 3 knots