



2014 PLATFORM SUPPLY VESSEL

Vessel Characteristics

Length, Overall:	272 ft	82.9 m
Beam:	58.1 ft	17.7 m
Depth:	20 ft	6.1 m
Maximum Draft:	16.4 ft	5 m
Light Draft:	6.9 ft	2.1 m
Minimum Height:	85.1 ft	25.9 m
Freeboard:	3.3 ft	1 m
Displacement:	5,650 lt	5,740 mt
Deadweight:	3,520 lt	3,580 mt
Clear Deck Space:	190 x 51 ft	58 x 16 m
Clear Deck Area:	9,450 ft ²	880 m ²
Deck Strength AFT:	1,020 lb/ft ²	5 t/m ²
Class Notations:	ABS: +A1, FIFI-1, OSV, (E), +AMS, +ACCU, +DPS-2, UWILD, NVIC 2-95 Change 2 ACP, ENVIRO, GP	

Tonnage (ITC): 2918 GT 1310 NT

Capacities

Deck Cargo:	2,250 lt	2,290 t
Fuel Oil:	249,000 gal	940 m ³
Potable Water:	33,100 gal	130 m ³
Fresh Water:	437,000 gal	1,660 m ³
Drill/Ballast Water:	61,700 gal	230 m ³
Bulk Tanks (6 tanks):	9,230 ft ³	260 m ³
Liquid Mud (2.7 SG*):	10,800 bbl	1,710 m ³
*Max Structural Specific Gravity		

Machinery

Diesel Electric Vessel			
<i>Propulsive/Total HP:</i>	5,360 / 9,280		
Z-Drives:	Yes		
Propellers (2):	2 x 2000kW FPP		
Kort Nozzles:	2		
Primary Generators (4):	1,730 kw	690 v	60 hz
<i>Driven by:</i>	CAT 3512C		
Secondary Generators (1):	550 kw	690 v	60 hz
<i>Driven by:</i>	CAT C18		
Emergency Generators (1):	95 kw	480 v	60 hz
<i>Driven by:</i>	CAT C4.4		
Bow Thruster (2):	1xBERG BFTT419, 1xHRP 6011RT		
<i>Driven by:</i>	846kW Electric Motor		
Total Thrust:	28.3 st	25.7 mt	

Deck Equipment

Anchors (2):	4710 LBS AC-14 HHP
Anchor Chain:	250 m of 40 mm chain per side
Windlass:	COASTAL MARINE EQUIP.
Crane (1):	4.5 t @ 6.1 m

Accommodations

No. of Berths:	36
Cabins:	2x1-man, 15x2-man & 1x4-man
Certified to Carry:	36
Galley seating:	20
Hospital:	Yes

Performance*

Fuel Consumption Vs Speed		
<i>Maximum:</i>	25.4 m ³ /day (280 gph) @ 13.5 knots	
<i>Cruising:</i>	14.7 m ³ /day (160 gph) @ 11 knots	
<i>Economical:</i>	11.8 m ³ /day (130 gph) @ 10 knots	
<i>Standby:</i>	1 m ³ /day (11 gph) @ 0 knots	
Range @ 11 Knots:	16,900 nm	
Transfer Rates		
<i>Fuel Oil:</i>	750 gpm @ 230 ft	170 m ³ /h @ 69 m
<i>Fresh Water:</i>	400 gpm @ 230 ft	91 m ³ /h @ 69 m
<i>Drill/Ballast Water:</i>	750 gpm @ 200 ft	170 m ³ /h @ 61 m
<i>Bulk:</i>	25.6 cfm @ 180 ft	43.5 m ³ /h @ 56 m
<i>Liquid Mud:</i>	1000 gpm @ 230 ft	230 m ³ /h @ 69 m

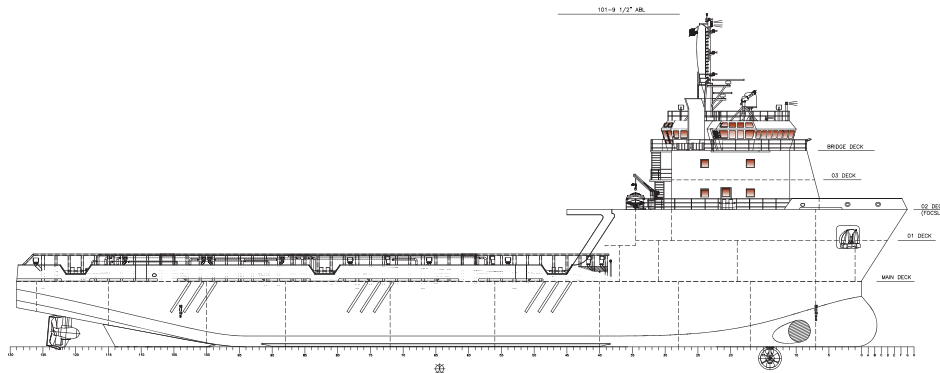
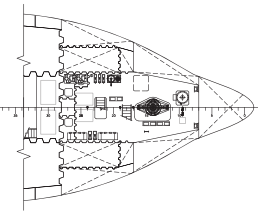
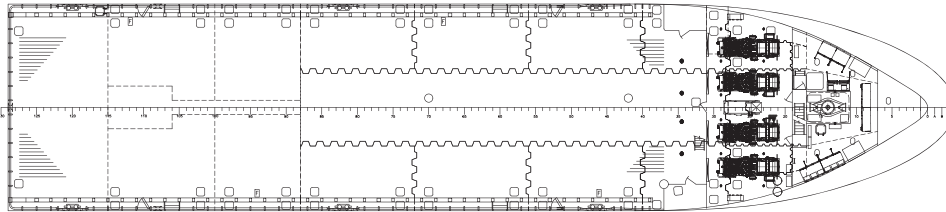
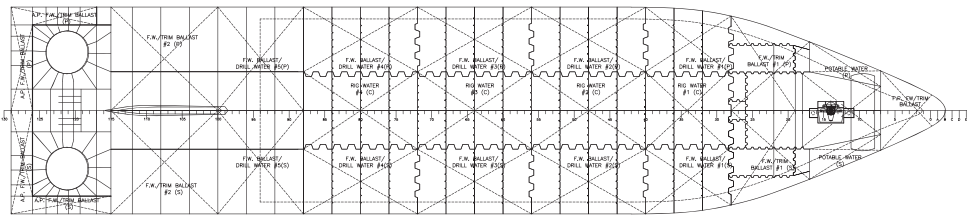
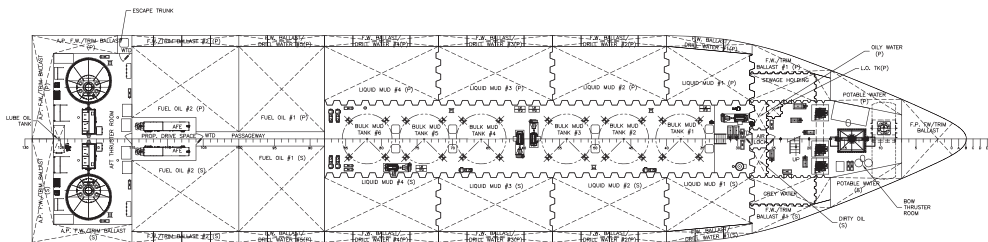
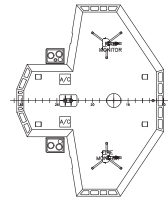
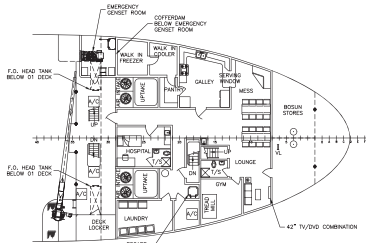
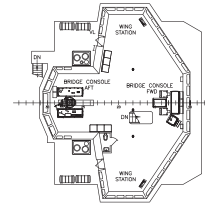
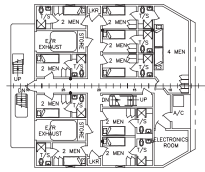
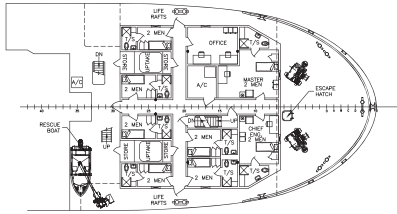
Nav/Comms Equipment

Radar(s):	2
Depth Sounder:	1
Cyro Compass:	3
Wind Speed Indicators:	3
Doppler Log:	1
Radio:	3 x VHF; 1 x SSB
Sat Com:	1 X FELCOM18

Special Equipment

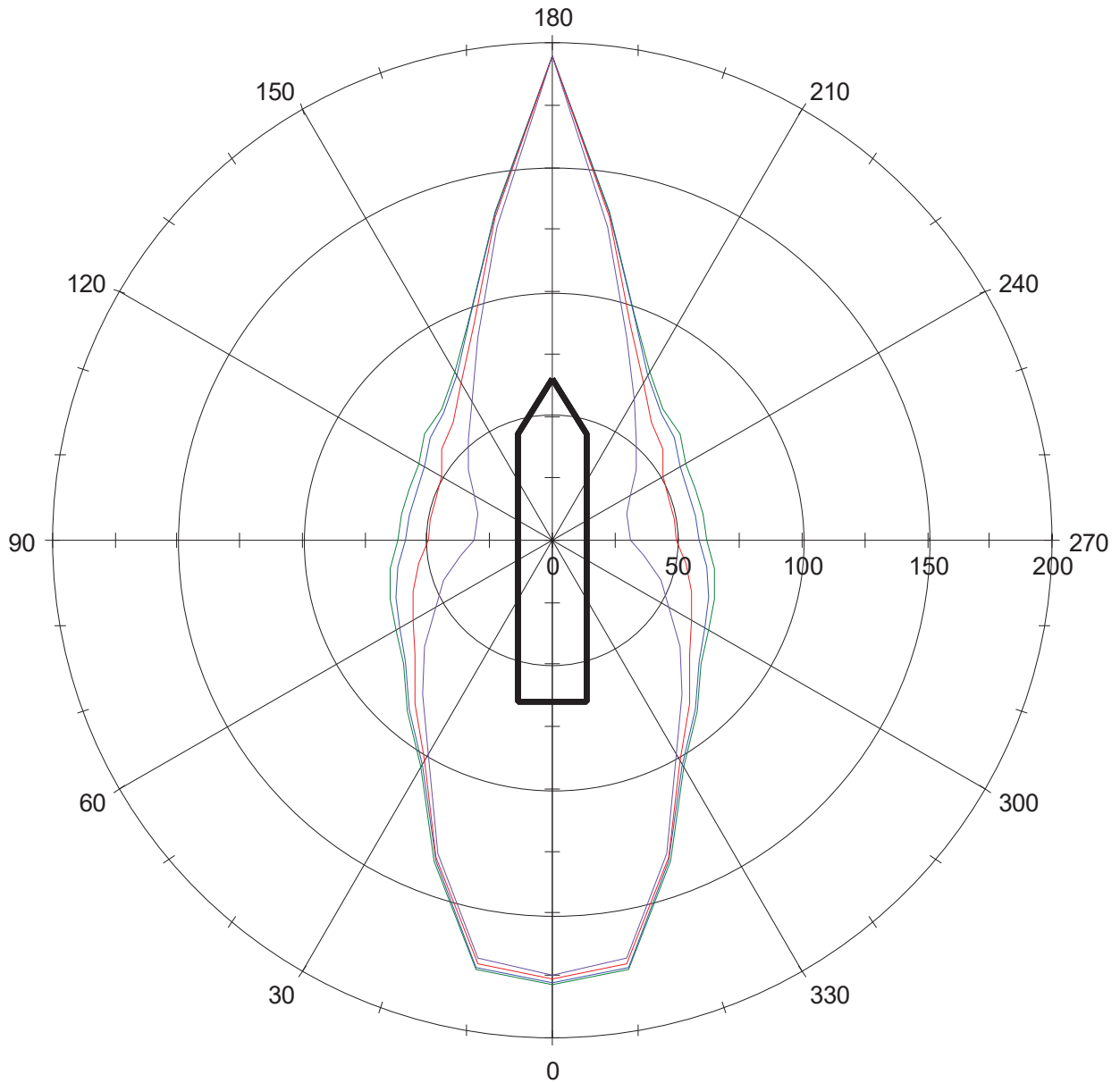
Firefighting:	FiFi-1
Dynamic Positioning:	DP-2
Ref. Systems:	3 x MRU; 3 x DGPS 1 x Microwave-based; 1 x Laser-based
Mud Mixers:	Yes
Tank Cleaning:	Yes
Rescue Boat:	RSQ 450A
Reefer Sockets:	3x 460V 35A; 3x 120V 20A
Misc:	MSD - 32 Persons; BHS Water Traps Only

General Arrangement (Current configuration may vary.)



DP Capability Plot

Ship: Thomas-Sea H147
Run : All Online, 100%



- Wind [knots], Current = 0 knots
- Wind [knots], Current = 1 knots
- Wind [knots], Current = 2 knots
- Wind [knots], Current = 3 knots