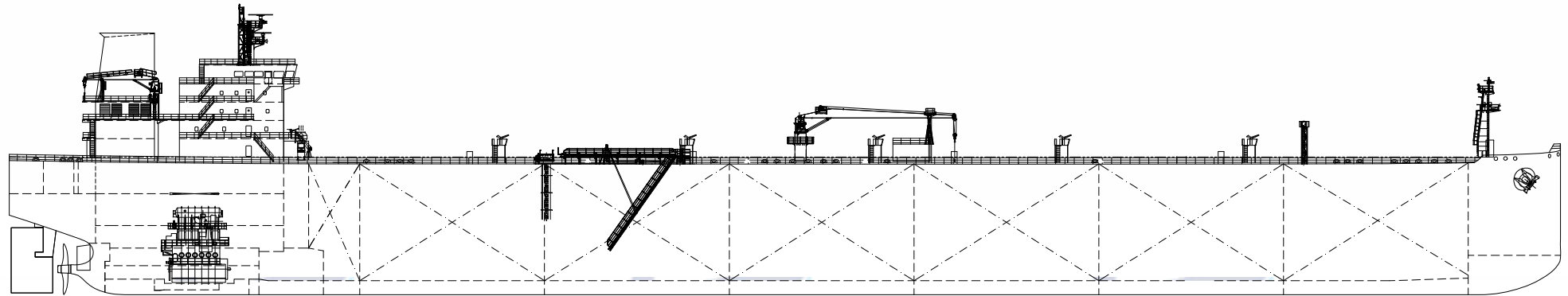




115,000 DWT PRODUCT TANKER



MAIN PARTICULAR

Length overall	approx.	249.80 m
Length between perpendiculars		245.00 m
Breadth, moulded		44.00 m
Depth, moulded		21.20 m
Design draft, moulded		13.75 m
Scantling draft, moulded		15.25 m
Deadweight at design draft	approx.	99,800 t
Deadweight at scantling draft	approx.	114,800 t

CLASS & CLASS NOTATIONS

ABS +A1, Oil Carrier, ESP, (E), +AMS, +ACCU, CPS, CPS-COT, CSR, AB-CM, BWE, BWT, CRC(SC, SP), EEDI-Ph3, EGC-SOx, ENVIRO, IHM, POT, NBLES, NOx-Tier III, RRDA, RW, SPMA, TCM, UWILD, VEC-L

Or other class with above equivalent notations

COMPLEMENT

28 P + 6 Suez crew

ENDURANCE

approx. 22,000 nm

CAPACITIES (100% Volume)

Cargo tanks (incl. slop tanks)	approx.	129,700 m ³
Residual tank	approx.	600 m ³
HFO tanks (incl. sett./serv. tanks)	approx.	2,100 m ³
MGO tanks (incl. serv. tank)	approx.	800 m ³
Water ballast tanks	approx.	39,000 m ³
Fresh water tanks	approx.	450 m ³

MAIN ENGINE

TYPE	MAN 6G60ME-C10.5 HPSCR
SMCR	11,000 kW x 77.0 r/min
NCR	9,185 kW x 72.5 r/min

EXHAUST GAS CLEANING SYSTEM

Open Loop / Capacity: M/E at NCR + 2 x G/E each 70%

FUEL CONSUMPTION OF MAIN ENGINE

D.F.O.C.	(NCR, Tier II)	approx. 34.8 t/day
D.F.O.C.	(NCR, Tier III)	approx. 34.9 t/day

SERVICE SPEED

Design draft, NCR with 15%SM approx. 14.50 kts

POWER SUPPLY

Diesel generator	3 x 1,200 kW
Emergency generator	1 x 320 kW

STEAM GENERATING PLANT

Auxiliary boiler	approx. 2 x 25,000 kg/h
Composite boiler	1 x 1,600 / 1,000 (EEC) kg/h

CARGO & BALLAST PUMPS

Cargo pump	3 x 3,000 m ³ /h x 135 mTH
Stripping pump	1 x 200 m ³ /h x 135 mTH
Ballast pump	2 x 2,000 m ³ /h x 35 mTH

INERT GAS SYSTEM

One combined IGS-IGG compact unit, the capacity of IGG model and IGS model to be 11,250 m³/h

NAVIGATOR EQUIPMENT

2 - Radar / ECDIS / DGPS navigators / Gyro compass
1 - VDR / AIS / BNWAS / Auto pilot

REMARK:

ESD: PSV, Rudder bulb; EEDI Phase III
Cargo tank coated with pure epoxy

Two (2) Newbuilding LR2 Tankers (ECO & Scrubber - Fitted) from Reputable European Owners Available for Private Sale

Delivery Schedule :

- 1st Unit : September 2026
- 2nd Unit : September 2027
- Location : First class Chinese Shipyard

Resale Price : USD 81 million per unit

Payment Terms : 5% deposit/ 95% balance

Structured Investment Opportunity

An additional structured transaction framework is available for the two (2) vessels:

Structure : A qualified designated entity will acquire the vessels from the current Owner and enter into a Bareboat Charter (BBC) arrangement with a principal affiliate.

Charter Period : Firm 9-year term, plus three (3) optional one-year extensions at Charterer's discretion (9+1+1+1 years)

Employment : The Owners have had secured a long-term Time Charter with a major South Korean corporation, covering the full charter duration and ensuring stable, contracted employment.

BBC Rate : Approximately USD 21,000 per day.

Key Note : The Owners are fully committed and prepared to proceed immediately with the development and execution of this transaction structure.