

# Equipment Inventory

---

---

<b>Winches</b>	<b>1</b>
<b>A-Frame</b>	<b>5</b>
<b>Cranes</b>	<b>8</b>
<b>HPUs</b>	<b>10</b>
<b>Fast Boats</b>	<b>12</b>

---

## Winches

### ➤ Braden BG6



- Max Lifting Capacity – 6,000 (lbs.)
- Max Wire Capacity – 102-181 (ft.)
- Shipping Weight – 192 (lbs.)

➤ Braden PD12



- Max Line Pull – 12,000 (lbs.)
- Max Wire Capacity – 367-545 (ft.)
- Shipping Weight – 430 (lbs.)

➤ Braden CH185



- Max Line Pull – 18,500-20,330 (lbs.)
- Max Wire Capacity – 724-1,561 (ft.)
- Shipping Weight – Apx. 1,350 (lbs.)

➤ Braden CH240



- Max Line Pull -24,000 (lbs.)
- Max Wire Capacity -1,228 (ft.)
- Shipping Weight – 2,407 (lbs.)

➤ Braden CH280



- Max Line Pull – 25,660 (lbs.)
- Max Wire Capacity – 915 (ft.)
- Shipping Weight – Apx. 2,200 (lbs.)

➤ Braden CH400



- Max Line Pull – 40,000 (lbs.)
- Max Wire Capacity – 706 (ft.)
- Shipping Weight – 2,800 (lbs.)

➤ Lantec 540



- Max Line Pull -70,841 (lbs.)
- Max Wire Capacity – 732 (ft.)
- Shipping Weight - Apx. 3065 (lbs.)

➤ Coastal Marine Winch 1M63

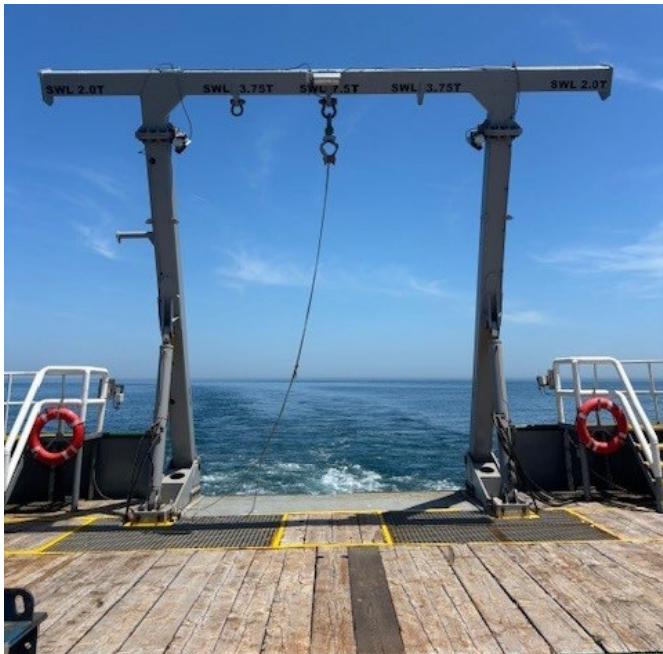


- Max Line Pull – 54,000 (lbs.)
- Max Wire Capacity – 444 (ft.)
- Shipping Weight – Apx. 6,070 (lbs.)

---

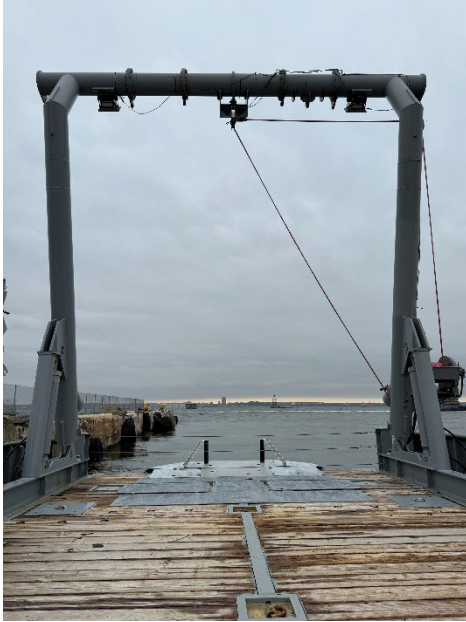
**A-Frames**

➤ 7.5t A-Frame



- Inside Width – 14'-3/4"
- Inside Height – 19'-10"

➤ 15t A-Frame



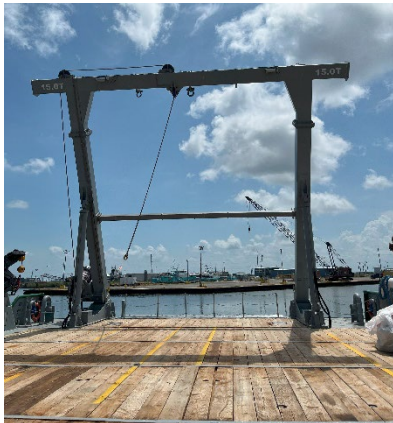
- Inside Width – 24'-4"
- Inside Height – 30'-5 ¼"

➤ 22t A-Frame



- Inside Width -26'-11"
- Inside Width – 31'-10"

➤ 24t A-Frame



- Inside Width – 26'-4"
- Inside Height – 30'-6 ½ "

➤ 30t A-Frame



- Inside Width – 28'-2"
- Inside Height – 35'-9"

➤ 40t A-Frame



- Inside Width – 26'-2"
- Inside Height – 41'-11"

---

## Cranes

### ➤ Melcal FL35T5



- Max Reach – 3,153 (lbs.) @ 46.9 (ft.)
- Min Reach - 6,614 (lbs.) 15.1 (ft.)

### ➤ DMWm380



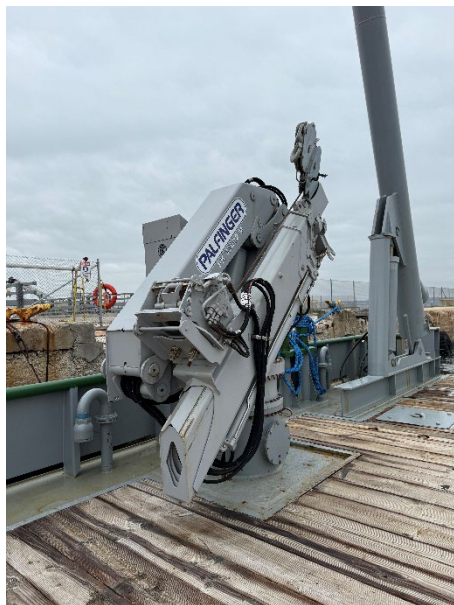
- Max Reach – 3,465 (lbs.) @ 50.9 (ft.)
- Min Reach – 14,980 (lbs.) @ 15.4 (ft.)

➤ DMWm400



- Max Reach – 3,395 (lbs.) @ 52.2 (ft.)
- Min Reach – 14,980 (lbs.) @ 16.7 (ft.)

➤ Palfinger PK32002MD



- Max Reach – 1,543 (lbs.) @ 67.59 (ft.)
- Min Reach – 15,432 (lbs.) @ 14.1 (ft.)

## EBI TC203



- Max Reach – 900 (lbs.) @ 115 (ft.)
- Min Reach - 19,450 (lbs.) @ 10 (ft.)

---

## **HPUs (Hydraulic Power Units)**

➤ Dual 40hp HPU



- Motor: 2 x 40 HP with Soft Start
- Dimensions : 60L X 56W X 72H
- Shipping Weight: ~3,500 LBS

➤ 75hp HPU



- Motor: 75 HP with Soft Start
- Dimensions : 70"L x 66"W x 75"H
- Shipping Weight : ~2,500 LBS

➤ 40hp HPU



- Motor :40 HP with Soft Start
- Dimensions: 60L X 56W X 72H
- Shipping Weight: ~2,800 LBS

➤ 50hp Containerized HPU



- Motor: 50 HP with Soft Start
- Dimensions: 8' x 10' Container
- Shipping Weight: ~TBD

➤ 75hp Containerized HPU



- Motor: 2 x 75 HP

---

**Yokohama Fenders**

- 8' x 13'
- 10' x 22'
- 11' x 23'

---

**Fast Boats**

➤ Fluid Watercraft Patrol 780



- Overall Length: 25'7"
- Max Carry Capacity: 3,947 LBS