



Ownvers Asking Price USD 12.8M

Specification Outline

60m MPP AHTSF VESSEL (DP2)

Introduction: The vessel has been purposefully designed and constructed as a multi-purpose offshore workboat, capable of supporting a wide range of offshore operations.

Her operational capabilities include anchor handling, firefighting, security/ guarding duties, offshore support and survey-related activities. In addition, the vessel is equipped to perform anti-pollution operations, logistical supply services, personnel and cargo transportation, and ocean towing of marine petroleum drilling platforms.

Built with versatility and operational reliability in mind, the vessel provides a robust platform for offshore energy support operations, ensuring efficient performance across diverse marine environments and mission profiles.

- Classification Notation : BVI ❌ HULL ❌ MACH, ❌ DYNAPOS AM/ AT-R, Supply Vessel, Tug, Fire Fighting Ship 1- Water Spraying, Special Service – Anchor Handling Tug/Offshore Support Vessel/ Standby Vessel, Unrestricted Navigation.
- Navigation Area : Unrestricted Area
- Flag : Hong Kong
- Project Phase : 2024 (Under Construction) | **Delivery: May, 2026**

Main Particulars		Liquid Tank Capacity & Loading Capacity	
L.O.A.	60.00 m (excluding bow rudder fenders)	Hydraulic Oil Tank	2.76 m ³
Beam MLD.	14.20 m	Foam Tank	19.29 m ³
Depth MLD.	6.00 m	Oil spilt Dispersant Tank	13.03 m ³
Berth	46 ps	Slop Tank	12.46 m ³
Cruising Draft	3.90 m	Oil Residue Tank	7.31 m ³
Offshore Draft	5.10 m (max.)	Domestic Sewage Tank	13.58 m ³
Speed	~12.00 kn	Grey Water Tank	13.58 m ³
		Deck Cargo	600.00 t
		Deck Strength	7.50 t/m ²
		Deck Area	~330.00 m ²
		Drilling Water	235.53 m ³
F.O. Tank	583.32 m ³	Dry Bulk Cargo (Cement)	4 × 34.00 m ³
F.W. Tank	274.16 m ³	Mud Tank	220.52 m ³
Lube. Oil Tank	4.14 m ³		

Main Power Plant Equipment

Main Engine

- Model	3516B
- Maker	Caterpillar – USA
- Quantity	2 units
- Rated Power	2100BHP (1566kW)
- Rated Revolution	1600rpm

Gearbox

- Model	MGRP1817VC
- Maker	Twin Disc Nico – Japan
- Quantity	2 units
- Input Power	2100BHP (1566kW)
- Input Revolution	1600rpm
- Reduction Ratio	7.59:1

Propulsion Plant

- Model	BCP 620
- Maker	BERG – Sweden
- Quantity	2 sets
- Type	CPP with 4 Blades Propeller

Generating Set 1

- Model	3406C
- Maker	Caterpillar – USA
- Quantity	1 unit
- Rated Power	245kW
- Power Supply	400V 50Hz 3Φ

Generating Set 2

- Model	C18
- Maker	Caterpillar – USA
- Quantity	2 units
- Rated Power	450kW
- Power Supply	400V 50Hz 3Φ

Emergency Generating Set

- Model	CCFJ100Y-W
- Maker	WC – China
- Quantity	1 unit

- Rated Power	100kW
- Power Supply	400V 50Hz 3Φ

Shaft Generator

- Maker	LEROY SOMER – USA/CHINA
- Quantity	2 units
- Rated Power	796kW
- Power Supply	400V 50Hz 3Φ

Bow Thruster No.1/2

- Model	BTT 315
- Maker	BERG – Sweden
- Quantity	2 units
- Power	550kW
- Dia. of Propeller	1500mm
- Max. Thrust	8.2t

Stern Thruster

- Model	BTT 213
- Maker	BERG – Sweden
- Quantity	1 unit
- Power	400kW
- Dia. of Propeller	1300mm
- Max. Thrust	6.0t

Electro-hydraulic Steering Gear

- Quantity	2 sets
- Spec.	5t-m

External Fi Fi System

- Maker	FFS – Norway
- External Fire Water Monitor	2 × FFS1200SB 1200m ³ /h (Sea Water)/ 300m ³ /h(Foam)
- External Fire Pump	2 × 1550m ³ /hr@120mLC
- Drencher System	1 set

Main Deck Machinery

Hydraulic Windlass Set

- Maker	ME - Singapore
- Quantity	1 unit
- Model	ME-HWL40AM2-SG (P/S)
- Rated Pull	6.8t@10 m/min

Hydraulic Towing Winch Set

- Maker	ME - Singapore
- Quantity	1 unit
- Model	ME75TWFV
- Drum Capacity (Steel Wire)	φ52mm × 1000m(*)
- Equipped on an actual Ship (Steel Wire)	φ52mm × 500m(*)
-Braking Force	200t
- Hydraulic Emergency Release	

Towing winch can operate locally and control remotely of the wheelhouse, with an emergency release button.

Hydraulic Vertical Capstan

- Maker	ME - Singapore
- Quantity	2 units
- Model	ME-HVC-5T
- Recovery Load	5t × 15 m / min

Hydraulic Auxiliary Winch Set

- Maker	ME - Singapore
- Quantity	2 units
- Model	ME-HTGW/SD-10T
- Recovery Load	10t × 15 m / min
- Drum Capacity	φ25mm × 200m(SWR) (*)
- Braking Force	15t

Hydraulic Shark Jaw

- Maker	ME - Singapore
- Quantity	1 unit
- Model	ME200THSJ/200THTP
- Load Carrying	200t

Hydraulic Folding Crane

- Quantity	1 unit
- Spec	2t@10m / 12t@2.5m

Main Auxiliary Equipment

Bulk Dry Cargo(Cement) Loading/Unloading System	4 × 34m³/h
Oily Water Treatment Plant	1 × 1.14m³/h, in compliance with MARPOL
Domestic Sewage Treatment Plant	1 × 50ps, in compliance with MARPOL
Miscellaneous Air Compressor Set	2 × 12m³/h @1.0MPa
Sea/Fresh Water Pressure Assembly Tank	300L/300L (sea/fresh water) 0.25~0.40 MPa
Central Electric Water Heater	2 × 250L
Six-burner Electric Stove (with oven)	1 × RZ-18CF
Refrigerator	1 set
Wheelhouse Chair	1 no.

Air Conditioning System

- Equipped with central air conditioner system in wheelhouse, mess room, galley, captain room, chief engineer room and other crew cabins.

Sailing Electric, Navigation & GMDSS Equipment

Radar	1 × JRC JMA-5312-6
Echo Sounder	1 × JRC JFE-380
Speed Log	1 × EML500-HV1
Anemometer 1	2 × Gill Ultrasonic
Anemometer 2	1 × OMC-60
DGPS	2 × DPS 110
Moving Reference Unit	1 × MRU-D
Standard Magnetic Compass	1 × CGT-165
Gyro Compass	3 × CMZ-900B
Electric Horn	1 × IBUKI ES300
Sound Power Tele.	1 × 12KS-1Q
Public Address System	1 × KG-1T
AIS	1 × JRC JHS-183
BNWAS	1 × KX KBJ-3

GMDSS A1+A2 Sea Area

MF/HF SSB Radio	1 × JRC JSB-196GM
Inmarsat-C	1 × JUE JUE-85
VHF Radio Telephone	1 × JRC JHS-800S
NAVTEX	1 × JRC NCR-333
GPS	1 × JRC JLR-8400
Radar Transponder	2 × JOTRON TR30
EPIRB	1 × JOTRON Tron60S
Portable VHF	3 × JOTRON TronSart30
Search Light	1 × 1000W

Main Life-Saving & FIFI Equipment

- Comply with the configuration requirements of SOLAS and corresponding class notation of Hong Kong or Flag of Convenience Authority Merchant Shipping Regulations on life-saving & fire-fighting equipment.

- Emergency Fire Pump Set: 1 × 25m³/h@ 0.43MPa

- General Fire Pump Set: 1 × 38m³/h@ 0.42Mpa

- Firefighter Breathing Apparatus Air Compressor Set:
1 × 12.0m³/h@30.0MPa

- Fire Alarm System: JB-QP-5Ei

- 1 set of engine room fixed CO₂ fire extinguishing system complying with BV rules.

- 1 × 6-person motorized rescue boat with single-boom launching device.

- Life-saving and fire-fighting equipment such as life rafts, life jackets, life buoys, fire extinguishers, and water hoses shall be

configured in accordance with the requirements of Hong Kong or Flag of Convenience Merchant Shipping Regulations

- 1 set of emergency shut-off device for fuel oil quick-closing valve.

- 2 units of dispersant spraying system.

Crew Cabin & Other Cabins

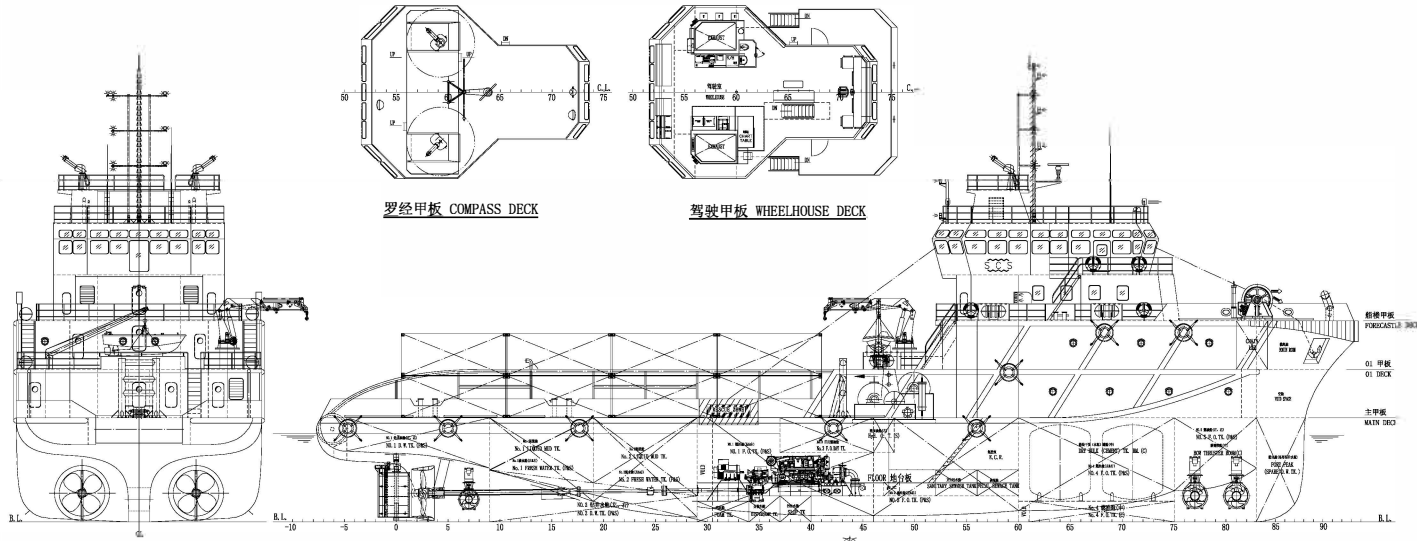
Captain's Room	1 no.
Chief Engineer's Room	1 no.
Officer Room (2-man)	16 no.
Crew Cabin (4-man)	3 nos.
Officer's Mess Room	1 no.
Crew's Mess Room	1 no.
Galley	1 no.
Provision Room	1 no.
Freezer/Refrigerated Storage	1 no.
AC Room	1 no.
Recreation Room	1 no.
Meeting Room	1 no.
Client Office	1 no.
Sick Bay	1 no.
ECR	1 no.
Emergency Generator Room	1 no.
Fireman's Outfit Room	1 no.
CO ₂ Room	1 no.
Bosun Room	1 no.

A

B

C

D

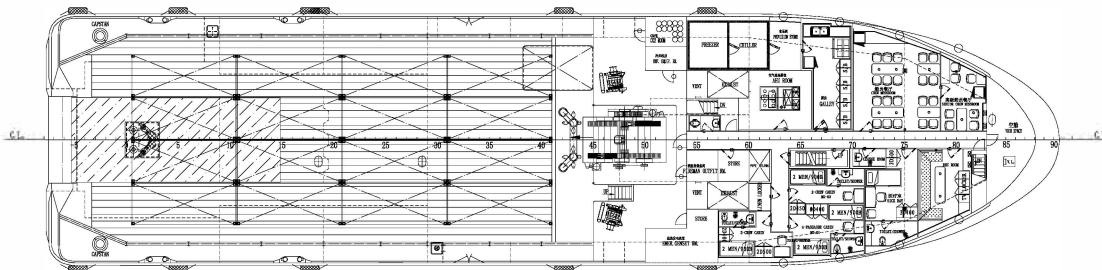


解视图 AFTER VIEW

侧视图 OUTBOARD PROFILE

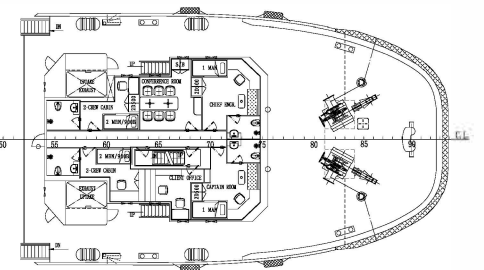
船视图 FORE VIEW

PRINCIPAL PARTICULARS		
LENGTH O.A	总长	60.00 M
LENGTH W.L	水线长	56.455 M(AT 3.9M DRAFT)
LENGTH B.P	两柱间长	50.50 M(AT 3.9M DRAFT)
BEAM M.O.D	型宽	14.20 M
DEPTH M.O.D	型深	6.00 M
DRAFT	设计吃水	3.90 M
DRAFT MAX.	最大吃水	5.10 M
FRAME SPACING	肋距	0.60 M
HULL	船体	STEEL
SPEED	航速	~12 KNOTS @ 3.90M DRAFT
DEADWEIGHT	载重量	~650 TONNES (AT 3.9M DRAFT)
DEADWEIGHT (MAX)	最大载重量	~1550 TONNES (AT 5.1M DRAFT)
DECK CARGO	甲板载货	600 MT (AT 5.1M DRAFT)
DECK LOAD	甲板负荷	7.5 MT/SQ.MTR. (FROM AFT. END TO F#4)
DECK AREA	甲板面积	~330 SQ.MTR.
BERTH	铺位	4#
NAVIGATION AREA	航区	UNRESTRICTED NAVIGATION
CLASS	船级	BY
NOTATION	入级符号	BY I \bullet HULL \bullet MACH \bullet DTM/PGS AM/AT R
Supply vessel / Tug /Special Service - Anchor Handling Tug , Special Service - Offshore support vessel / Standby vessel, Fire fighting Ship I, Water spraying, Unrestricted navigation		
MAIN ENGINES	主机	CATERPILLAR 3516B 2x2100KW/1800RPM



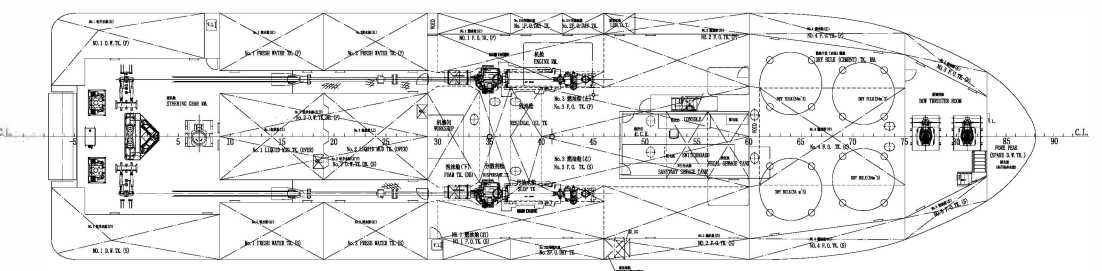
主甲板 MAIN DECK

4 MEN X 2 = 4 MEN
2 MEN X 1 = 2 MEN

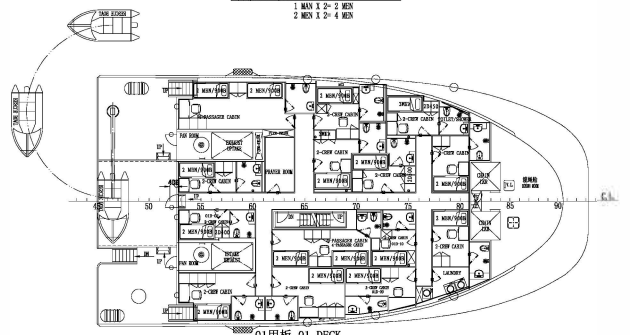


船楼甲板 FORECASTLE DECK

2 MEN X 2 = 2 MEN
2 MEN X 1 = 2 MEN



主甲板下 BELOW MAIN DECK



01甲板 01 DECK

4 MEN X 2 = 8 MEN
2 MEN X 1 = 2 MEN

Updated: 2026-Feb-25

60m MPP AHTSF VESSEL (DP2) MAIN EQUIPMENT MAKER LIST

NO.	NAME OF EQUIPMENT	MODEL & SPECIFICATON	MAKER	QTY
Main Power Plant				
1	Main Engine	Model: 3516B Rated Power: 2100BHP(1566kW) Rated Revolution: 1600rpm	CATERPILLAR – USA	2 units
2	Remote Control Unit	Model: BERG	BERG – SWEDEN	1 set
3	Flexible Coupling	Model: BC41/5/80N	Kupplung –GERMANY	2 sets
4	Gearbox	Model: MGRP1817VC Power Input: 2100BHP (1566kW) Revolution Input: 1600rpm Reductio Ratio: 7.59:1	TWIN DISC NICO –JAPAN	2units
5	DP2 System	Model: K-Pos DP-21	KONGSBERG – NORWAY	1 set
6	Propulsion Plant	Type: CPP with 4 blades of propeller Model: BCP 620	BERG – SWEDEN	2 sets
7	No.1/2 Bow Thruster	Model: BTT 315 Power: 550kW Propeller Dia.: 1500mm Max. Thrust: 8.2t	BERG – SWEDEN	2 sets
8	Stern Thruster	Model: BTT 213 Power: 400kW Propeller Dia.: 1300mm Max. Thrust: 6.0t	BERG – SWEDEN	1 set



NO.	NAME OF EQUIPMENT	MODEL & SPECIFICATON	MAKER	QTY
9	Generator 1	Model: 3406C Rated Power: 245kW Power Supply: 400V 50Hz 3Φ	CATERPILLAR – USA	1 unit
10	Generator 2	Model: C18 Rated Power: 450kW Power Supply: 400V 50Hz 3Φ	CATERPILLAR –USA	2 units
11	Emergency Generating Set	Model: CCFJ100Y-W Rated Power: 100kW Power Supply: 400V 50Hz 3Φ	WEICHAI –CHINA	1 unit
12	Shaft Generator	Rated Power: 796kW Power Supply: 400V 50Hz 3Φ	LEROY SOMER – USA/CHINA	2 units
13	Electro-hydraulic Steering Gear	Specification: 5t • m	RIQ – SINGAPORE	2 sets
Main Deck Machinery				
14	Hydraulic Anchor Handling/Towing Windlass Set	Model: ME75TWWF Rope Capacity: ϕ 52 mm × 1000 m (steel wire rope) (*) Actual Ship Equipped: ϕ 52 mm × 500 m (steel wire rope) (*) Braking Force: 200 t	ME–SINGAPORE	1 unit
15	Hydraulic Windlass Set	Model: ME-HWL40AM2-SG (P/S) Rated Pull: 6.8t × 10 m/min	ME–SINGAPORE	1 unit
16	Hydraulic Auxiliary Winch Set	Model: ME-HTGW/SD-10T Recovery Load: 10t × 15 m / min Rope Capacity: ϕ25 mm × 200 m (SWR) (*) Brake Capacity: : 15t	ME–SINGAPORE	2 units
17	Hydraulic Capstan	Model: ME-HVC-5T Recovery Load: 5t ×15 m / min	ME–SINGAPORE	2 units

NO.	NAME OF EQUIPMENT	MODEL & SPECIFICATON	MAKER	QTY
18	Hydraulic Shark Jaw	Model: ME200THSJ/200THTP Bearing Load: 200t	ME-SINGAPORE	1 unit
19	Hydraulic Folding Type Crane	Specification: 2t@10m / 12t@2.5m	SG-CHINA	1 unit
20	1# Hydraulic Power Station	Power: 2×75kW+7.5kW	ME-SINGAPORE	1 unit
21	2# Hydraulic Power Station	Power: 2×45kW	ME-SINGAPORE	1 unit
22	3# Hydraulic Power Station	Power: 1×22kW	ME-SINGAPORE	1 unit
23	Power Station for Hydraulic Folding Type Crane	Power: 1×22kW	CHINA	1 unit

External Fire System

24	Sea Water/Foam Dual Purpose External Fire Fighting Monitor	Model: FFS1200/300LB Flow: 1200m ³ /h(Sea Water) / 300m ³ /h (Foam) Throw Range: 120m (Sea Water) Height: 50m (Sea Water)	FFS – NORWAY	2 units
25	External Fire Fighting Pump	Model: SFP250 x 350XP Discharge: 1550 m ³ /h Head: 120mlc	FFS – SWEDEN	2 units
26	Fire Foam Proportioner	Model: FFS600FiA Flow: 300L/min Mix Ratio: 3 - 6%	FFS – NORWAY	1 unit

AC System

27	Central Air Conditioner Compressor	Model: MCU-18 Refrigerant: R404A Cooling Capacity: 2×180kW	YS – CHINA	2 units
28	Marine Air Conditioner	Model: MAU-9 Cooling Capacity: 104kW Heating Capacity: 60kW	YS – CHINA	2 sets

NO.	NAME OF EQUIPMENT	MODEL & SPECIFICATON	MAKER	QTY
Main Auxiliary Equipment				
29	Dry Bulk (Cement) Loading/Unloading System	Specification: 4 × 34m ³	ALPHATECHNIQUE - NETHERLANDS	1 set
30	Double Speed Mud Transfer/ Circulating Pump	Model: Mission 3 × 2 Discharge: 60/30m ³ /h Pressure: 0.85/0.23 MPa	DESMI - USA	2 units
31	Fire/Drilling Water General Pump Set	Model: ESL50-180/A12 Discharge: 38 m ³ /h Pressure: 0.42 MPa	DESMI –DENMARK	1 unit
32	Bilge Water Extraction/Discharge Pump Set	Model: ESL50-180/A12 Discharge: 38 m ³ /h Pressure: 0.42 MPa	DESMI –DENMARK	1 unit
33	F.O. Transfer Pump Set	Model: GP51EFM Discharge: 7.5 m ³ /h Pressure: 0.30 MPa	DESMI –DENMARK	2 units
34	Residual Oil Extraction/Discharge Pump Set	Model: SA50-180-4/A7H Discharge: 7.5 m ³ /h Pressure: 0.34/0.29 MPa	DESMI –DENMARK	1 unit
35	Domestic Sewage Discharge Pump Set	Model: SHDN 144 50-131 Discharge: 15 m ³ /h Pressure: 0.18 MPa	DESMI - DENMARK	1 unit
36	Sanitary Water Pump Set	Model: SHDN 144 50-131 Discharge: 15 m ³ /h Pressure: 0.18 MPa	DESMI - DENMARK	1 unit
37	Emergency Fire Water Set	Model: ESL50-180/A12 Discharge: 25 m ³ /h Pressure: 0.43 MPa	DESMI –DENMARK	1 unit
38	1#, 2# Hydraulic Power Plant Water Cooling Pump Set	Model: ESL50-180/A12 Discharge: 33 m ³ /h Pressure: 0.35 MPa	DESMI –DENMARK	1 unit

NO.	NAME OF EQUIPMENT	MODEL & SPECIFICATON	MAKER	QTY
39	Central AC/ Refrigerating Unit Water Cooling Pump Set	Model: ESL50-180/A12 Discharge: 33 m ³ /h Pressure: 0.35 MPa	DESMI –DENMARK	2 units
40	External Fuel Oil Supply Pump Set.	Model: NSL100-265/A02 Discharge: 98 m ³ /h Pressure: 0.60 MPa	DESMI –DENMARK	1 unit
41	External Fresh Water Supply Pump Set.	Model: NSL100-265/A02 Discharge: 98m ³ /h Pressure: 0.60 MPa	DESMI –DENMARK	1 unit
42	Miscellaneous Air Compressor Set(Including Air Cylinder)	Model: V-0.2/10 Discharge: 12m ³ /h Pressure: 1.0 MPa	JAGUAR – CHINA	2 units
43	Fireman's Breathing Apparatus Air Compressor Unit	Discharge: 12.0m ³ /h Pressure: 30.0MPa	CHINA	1 unit
44	Fixed CO2 Fire Extinguishing System in Engine Room	Air Cylinder Quantity : 14 Air Cylinder Volume : : 68L@45kg/ Cylinder	WL – CHINA	1 set
45	Oily Water Treatment Plant	Model: 5T/107 Separating Capacity: 1.14 m ³ /h Emission Standard: ≤15ppm Work Pressure: 15PSIG	BOSS – USA	1 unit
46	Domestic Sewage Treatment Plant	Model: WCBX-50B Person: 50 persons Handling Capacity: 3.5t/d	ZZ – CHINA	1 unit
47	Engine Room Blower Set (Reversible)	Model: CZF-95A Air Volume: 42000m ³ /h Full Pressure: 525Pa	QDFJ – CHINA	2 units

NO.	NAME OF EQUIPMENT	MODEL & SPECIFICATON	MAKER	QTY
48	Galley Cooker Hood	Extraction Capacity: 1250 m ³ /h	CHINA	1 unit
49	Seawater/Freshwater Assembled Pressure Water Tank	Model: ZYG(S)-0.6 Capacity: 300L/300L(sea water/fresh water)	ZZ – CHINA	1 set
50	Central Water Heater	Model: HP-80 Capacity: 250 L Power Supply: 380V 50Hz 3 φ	GERMANPOOL - GERMANY/CHINA	2 units
Navigation Equipment				
51	Radar	JMA-5312-6	JRC – JAPAN	1 unit
52	Echo Sounder	JFE-380	JRC – JAPAN	1 unit
53	Speed Log	EML500-HV1	JRC – JAPAN	1 unit
54	Anemometer 1	Gill Ultrasonic	KB – NORWAY	2 units
55	Anemometer 2	OMC-60	KB – NORWAY	1 unit
56	DGPS	DPS 110	KB – NORWAY	2 units
57	Moving Reference Unit	MRU-D	KB – NORWAY	1 unit
58	GPS	JLR-8400	JRC – JAPAN	1 unit
59	Standard Magnetic Compass	CGT-165	SF – CHINA	1 set
60	Gyro Compass	CMZ-900B	YKG – JAPAN	3 sets
61	Electric Whistle	ES300	IBUKI – JAPAN	1 unit
62	AIS	JHS-183	JRC – JAPAN	1 unit
Radio Communication Equipment (A1+A2 Sea Area)				
63	MF/HF SSB Radio Station	JSB-196GM	JRC – JAPAN	1 unit
64	Mini-C LRIT	JUE-95LT	JRC – JAPAN	1 unit
65	VHF telephone	JHS-800S	JRC – JAPAN	1 unit
66	Navtex	NCR-333	JRC – JAPAN	1 unit
67	SART	NRT-1000	NSR- CHINA	2 units
68	EPIRB	NEB-2000	NSR- CHINA	1 unit
69	Portable VHF	NTW-1000	NSR - CHINA	3 units

NO.	NAME OF EQUIPMENT	MODEL & SPECIFICATON	MAKER	QTY
Power Distribution Equipment				
70	Main Switchboard	FZJ92-450	HY – CHINA	1 set
71	Emergency Distribution Panel	PYZ-100	HY – CHINA	1 set
72	Wheelhouse Control Console	TJJ92-32	HY – CHINA	1 set
73	E/R Monitoring Station	TCJ92-16	HY – CHINA	1 unit
74	Battery Charge/discharge Panel	PCZ-40	HY – CHINA	1 set
75	Engine Room Centralized Monitoring and Alarm System	HYBJ100-24	HY – CHINA	1 set
76	Main Lighting Transformer	AC400V/230V, 50Hz, 3Φ, 75kVA	HY – CHINA	2 units
77	Shore Connection Box	AC380V, 50Hz, 200A, 3Φ	HY – CHINA	1 unit