

# 2008 | FAST UTILITY CRAFT / CREWBOAT



## FAST UTILITY CRAFT / CREWBOAT

### PRINCIPAL PARTICULARS

Year Built	2008
Place Built	Singapore
Length Overall	36.00 m
Length BP	32.50 m
Breadth Moulded	7.60 m
Depth Moulded	3.65 m
Draft (Max)	1.85 m
Freeboard (SLL)	1.50 m
Class	DNV
Notation	A1, Offshore Service Vessel R4
GRT / NRT	239.00 T / 72.00 T
Deadweight	115.99 T

### DECK PARTICULARS

Total Clear Deck Area	80.00 m <sup>2</sup>
Deck Carrying Load	34.50 T
Deck Strength	2.00 MT/m <sup>2</sup>

### PERFORMANCE

Maximum Speed	22 knots @ 20 T DWT
Economic Speed	18 knots @ 20 T DWT

### TANK CAPACITIES

Fuel Oil	55.00 m <sup>3</sup>
Fresh Water	27.00 m <sup>3</sup>

### PROPULSION SYSTEM

Main Engines	3 x Cummins KTA 38 M2, 1350 BHP, 1007 kW @1900 RPM, Total 4050 BHP
Auxiliary Engines	2 x Cummins 6 BT 5.9D-(M), 80 kW @ 50 Hz
Bow Thruster	Sauer Danfoss, Electric Hydraulic @ 75 kW
Propellers	3 x Fixed Pitch Propellers
Steering Gear System	2 x Duplex Electro Hydraulic Pump
Rudder	2 Units

### CARGO DISCHARGE CAPACITIES

Fuel Oil Pump	30m <sup>3</sup> /hr
Fresh Water Pump	30m <sup>3</sup> /hr
Bilge	30m <sup>3</sup> /hr

### DECK EQUIPMENT

Anchor Windlass c/w Bow	HYPAC, HHAW15-32 16 KN @ 13 m/min @ Mid Layer
-------------------------	---

### ACCOMMODATION

Passenger Seats	64 Seats
Crew	4P x 3, 1P x 2 = 14

### EXTERNAL FIRE-FIGHTING EQUIPMENT

Fi-Fi Notation	Equivalent to 1/4 FiFi
Fi-Fi Monitors	600 m <sup>3</sup> /hr, 135 m Throw Length
Fi-Fi Pump	600 m <sup>3</sup> /hr (GM12V-71T1 Engine)

### INTERNAL FIFI & ANTI POLLUTION EQUIPMENT

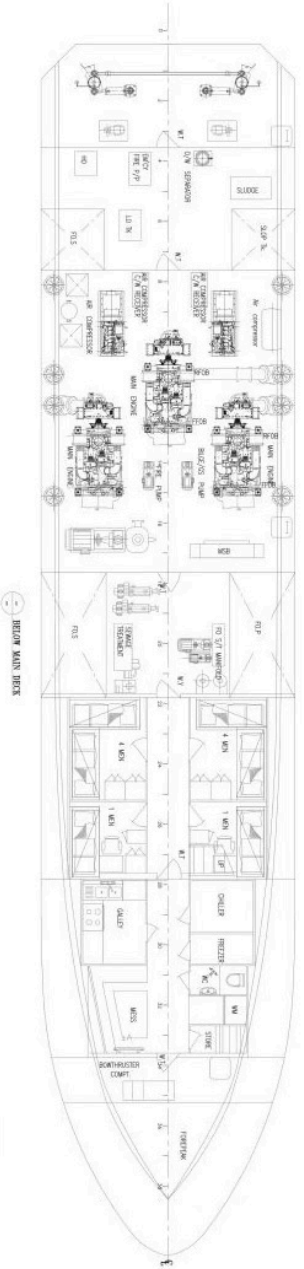
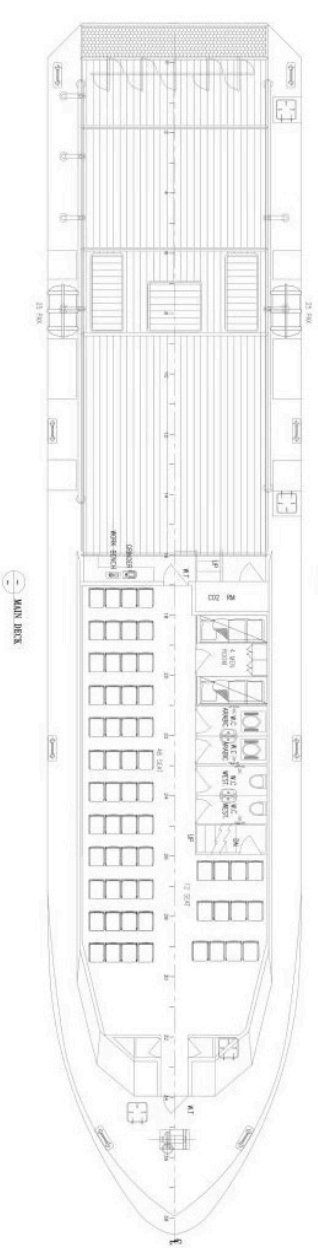
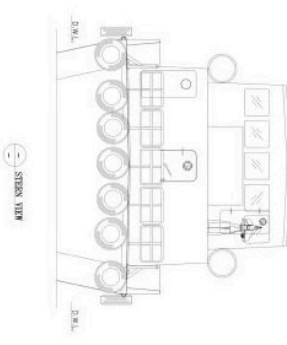
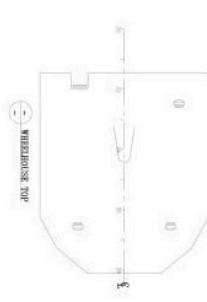
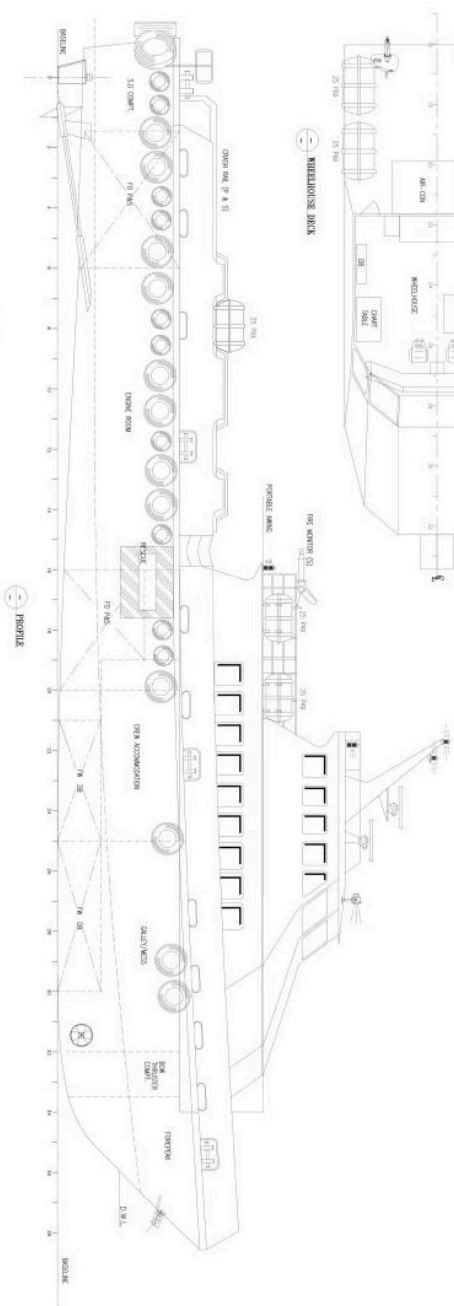
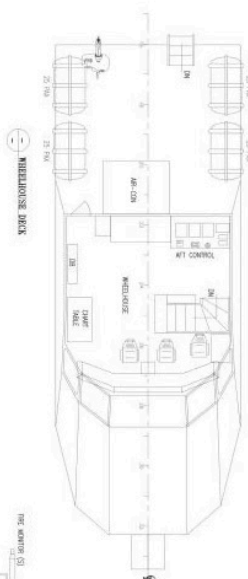
Emergency Fire Pump	1 x 50 m <sup>3</sup> / hr @ 30 mtr head
CO2 Fi-Fi System Fire Detection & Alarm	Fixed CO2 System for Engine Room Optical, Multi-Sensor Smoke & Heat Detector

### LIFE-SAVINGEQUIPMENT

Life Rafts	6 x 25 men, SOLAS compliant
------------	-----------------------------

# GENERAL ARRANGEMENT PLAN

VP-1000 117



LEGEND	
	EXISTING
	NEW ADDITION
REFERENCE DWG.	

PRINCIPAL PARTICULARS	
LENGTH (O.A.)	: 36.00 m
LENGTH (B.P.)	: 33.20 m
BREADTH (MID.)	: 07.60 m
DEPTH (MID.)	: 03.65 m
DESIGNED DRAUGHT	: 01.85 m
COMPLEMENT	: 64 PASSENGERS
	: 10 CREW

TITLE		DATE		DRAWN BY		CHECKED BY	
GENERAL ARRANGEMENT PLAN		26.07.21		REVISIONS		REV. 1 A	
VESSEL NAME		NO. 1		SCALE		SIZE A1	
DESIGN NO.		REV. 1 A		SCALE		SIZE A1	