

## 2001 DP-2 Multi-Purpose Support Vessel

36 MT AHC Knuckle-boom Subsea Crane



### Key Vessel Particulars

- 44 POB Capacity with additional portable accommodation availability
  - 36 MT AHC Knuckle-boom Subsea Crane
  - Anti-Roll Tank
  - Moon-pool
-

# 2001 | DP-2 Multi-Purpose Support Vessel | 36 MT Knuckle Boom Crane

## DIMENSIONS AND REGULATORY INFORMATION

<b>Length:</b>	240 ft 0 in (73.2 m)	<b>Beam:</b>	54 ft 0 in (16.5 m)	<b>Draft Max:</b>	13 ft 2 in (4.01 m)
<b>Gross:</b>	1,815 GT	<b>Net:</b>	544 NT	<b>Draft Min:</b>	8 ft 0 in (2.44 m)
				<b>Flag:</b>	TBD

**Classifications:** Loadline, American Bureau of Shipping, +DPS-2, +A1, +AMS, OSV, ACP, CRC

## PERFORMANCE

**Cruise Speed:** 10.0 kts 90 gal/hr (341 l/hr) **Max Speed:** 12.0 kts 205 gal/hr (776 l/hr)

## PROPULSION, MACHINERY AND STEERING

<b>Main Engines:</b>	2 x Caterpillar 3516B	<b>Total Horsepower:</b>	4,520 hp
<b>Propellers:</b>	CPP, High Efficiency, 4-Blade	<b>Propeller Diameter:</b>	95 in (2,413 mm)
<b>Primary Generators:</b>	3 x Caterpillar 3406B	<b>Total Rating:</b>	750 kW
<b>Bow Thruster:</b>	2 x Brunvoll CPP Tunnel	<b>Total Rating:</b>	1,200 hp
<b>Stern Thruster:</b>	1 x Brunvoll CPP Tunnel	<b>Total Rating:</b>	600 hp
<b>Rudder:</b>	Independent Steering, Schilling Fishtail	<b>Power Generation:</b>	480V/60 Hz/3-Phase

## CAPACITIES AND DELIVERY RATES

<b>Deadweight:</b>	2,036 LT (2,069 MT)	<b>Deck Area:</b>	140 ft x 45 ft (6,300 ft <sup>2</sup> ) 42.7 m x 13.7 m (585.3 m <sup>2</sup> )
<b>Deck Cargo:</b>	1,100 LT (1,118 MT)	<b>Deck Load Rating:</b>	1,024 lbs/ft <sup>2</sup> (5 MT/m <sup>2</sup> )
<b>Dry Bulk:</b>	8,222 ft <sup>3</sup> (233 m <sup>3</sup> )	<b>System Pressure:</b>	80 psi (5.5 bar)
<b>Liquid Mud:</b>	6,285 bbl (999 m <sup>3</sup> )	<b>Discharge Rate:</b>	407 GPM (93 m <sup>3</sup> /hr)
<b>Potable Water:</b>	45,340 gal (172 m <sup>3</sup> )		
<b>Rig Fuel:</b>	97,444 gal (369 m <sup>3</sup> )	<b>Discharge Rate:</b>	550 GPM (125 m <sup>3</sup> /hr)
<b>Rig Water:</b>	260,878 gal (987 m <sup>3</sup> )	<b>Discharge Rate:</b>	550 GPM (125 m <sup>3</sup> /hr)
<b>Cooler Area:</b>	400 ft <sup>3</sup> (11 m <sup>3</sup> )	<b>Freezer Area:</b>	400 ft <sup>3</sup> (11 m <sup>3</sup> )

## ELECTRONICS

Auto Pilot, Beier IVCS 2000, C-Nav, CCTV Cameras, Depth Sounder, DGPS w/ AIS, EPIRB, Fanbeam, GMDSS "A3", Gyro Compass, Joystick Control, Mag Compass, MAMS/VMS, Navtex, Public Phone System w/ loudhailer, Radar (S-band), SARTs, Techsol, VHF Radio, VHF Radio (Handheld), Windbird, X-band Radar

## ACCOMMODATIONS

16 air conditioned/heated staterooms for 44 person(s) berthing total. The rooms are configured as follows:

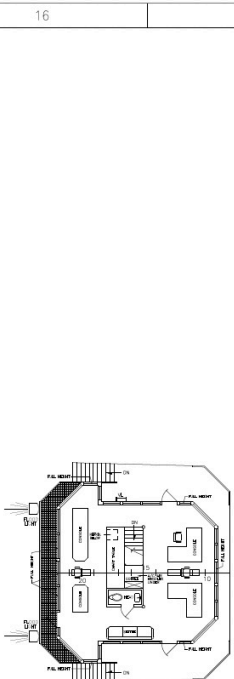
2 air-conditioned staterooms for 1 person(s) berthing each.

7 air-conditioned staterooms for 2 person(s) berthing each.

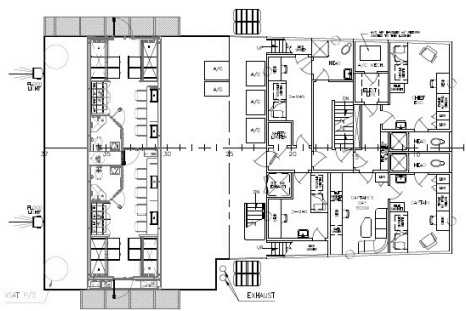
7 air-conditioned staterooms for 4 person(s) berthing each.

## SPECIAL FEATURES

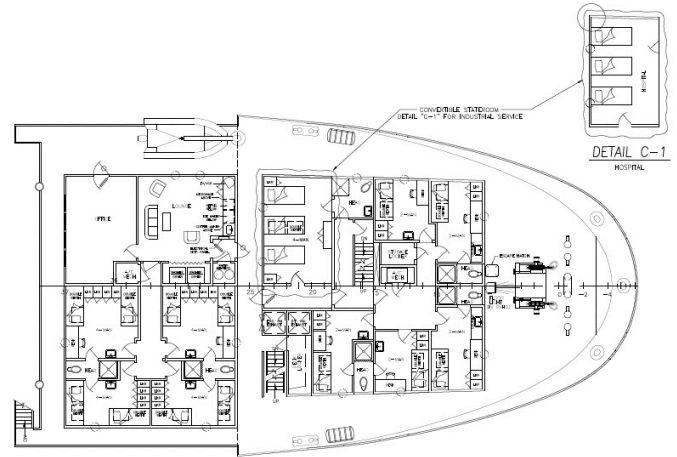
<b>Off-ship Firefighting:</b>	Non-classed	<b>Number of Fire Monitors:</b>	1
		<b>Total Flow Rate:</b>	3,000 gal/min (682 m <sup>3</sup> /hr)
<b>Knuckle Boom Crane:</b>	1 x Hydra-Pro HPO240-21K	<b>Max Lift @ Max Radius:</b>	7 MT @ 70 ft
		<b>Max Lift @ Min Radius:</b>	36 MT @ 20 ft
		<b>Max Lift @ Max Depth:</b>	35 MT @ 675 ft
		<b>Max Lift @ Max Height:</b>	18 MT @ 102.0 ft abv MD
<b>Roll Damping:</b>	Anti-Roll Tank	<b>Moon Pool:</b>	36 in. dia.



BRIDGE DECK  
43'-0" ABL



01 DECK  
30'-0" ABL



FOCSLE DECK  
55'-0" ABL

DETAIL C-1  
HOSPITAL

