

2009 | 85.4 m | DP2 PSV | For P&C Sale



2009 | 85.4 m | DP2 PSV | For P&C Sale

DIMENSIONS & DOCUMENTATION

LENGTH OVERALL	280 ft.	85.4 m	BEAM	54 FT	16.5 m
GRT (ITC)	1,842		NET	777	
CLASSIFICATION	ABS		FLAG	US	
			DEPTH	17.00 ft	5.18 m
			MAX DRAFT	13.76 ft	4.19 m
NOTATIONS	A1/Circle E/AMS/DPS-2/SOLAS		MIN DRAFT	10.00 ft	3.05 m
CERTIFICATIONS	Subchapter L		YEAR BUILT	2009	

PERFORMANCE

SPEED (MAXIMUM):	11.5 knots
CRUISING SPEED:	10.0 knots

MACHINERY

MAIN ENGINES:	(2) CATERPILLAR 3516 Tier 2	TOTAL RATING	4,200 BHP
MAIN PROPULSION:	(2) Azimuthing propellers in Nozzle	TOTAL HORSEPOWER	5,365 BHP
MAIN GENERATORS :	(2) CATERPILLAR C18 Tier 2	TOTAL RATING TOTAL	850 kW
BOW THRUSTERS:	(2) Rolls Royce	HORSEPOWER	1,440 BHP
POWER GENERATION:	460V/60Hz/3 Phase		

CAPACITIES & DISCHARGE RATES

DEADWEIGHT	2,694 LT	2,738 Mt	DECK AREA	9,000 ft ²	2,743.2 m ²
DECK STRENGTH	540 lbs/ft ²	2.6 t/m ²			
DRILL/RIG WATER	158,143 USG	598.6 m ³	DISCHARGE RATE	700 GPM	158.9 m ³ /hr
LIQUID MUD	10,698 bbls.	1,700.8 m ³	DISCHARGE RATE	750 to 1,200 GPM	170.3 to 272.5 m ³ /hr
FUEL	250,000 USG	946.4 m ³	DISCHARGE RATE	700 GPM	158.9 m ³ /hr
DRY BULK	6,000 ft ³	169.9 m ³	DISCHARGE RATE	100 psi	7 bar
POTABLE WATER	72,738 USG	275.3 m ³			

SPECIAL FEATURES

Fire Fighting - (2) FFS Electronic Remote Controlled Water Monitors Water Capacity of 5284 GPM @ 400ft

Sentinal Engine Alarm
Rescue Boat
Electronic Welding Machine

Blackout Prevention System
Rolls Royce BPS System

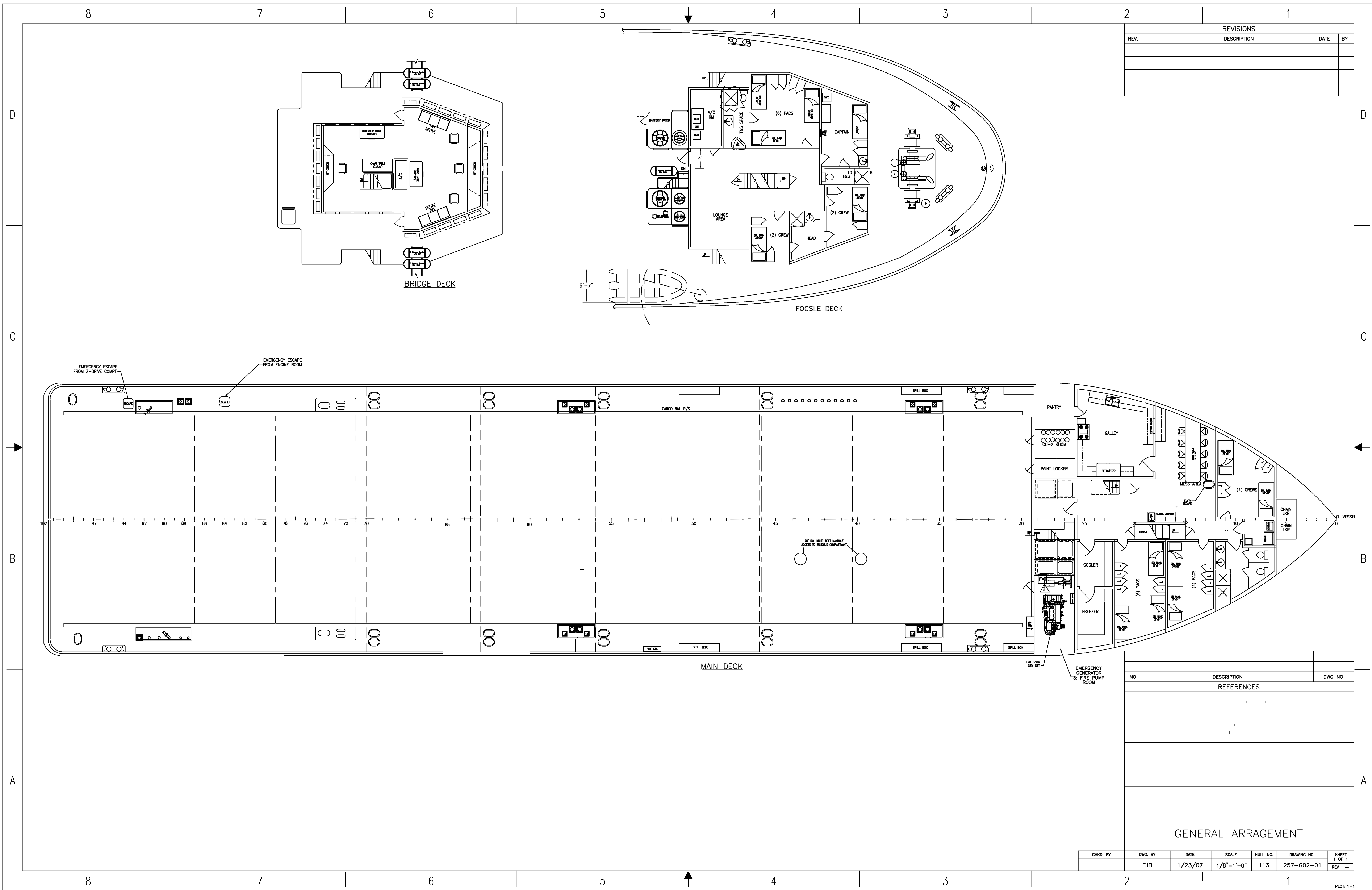
ACCOMMODATIONS

7 air conditioned/heated staterooms for 25 person(s) berthing total.
The rooms are configured as follows:
1 air conditioned staterooms for 1 person(s) berthing each

2 air conditioned staterooms for 2 person(s) berthing each
2 air conditioned staterooms for 4 person(s) berthing each
2 air conditioned staterooms for 6 person(s) berthing each

ELECTRONICS

(2) FURUNO FR-8122, FurunoGP-37, Furuno FS-1503, (2) (2) Furuno FM-8800S, Furuno FA-150, Furuno FE-700, Furuno RC-1815, CyScan, RadaScan, Beier IVCS 2000 DP2, Microsoft Office, GDS iDirect VSAT, Maptech Navigator Pro



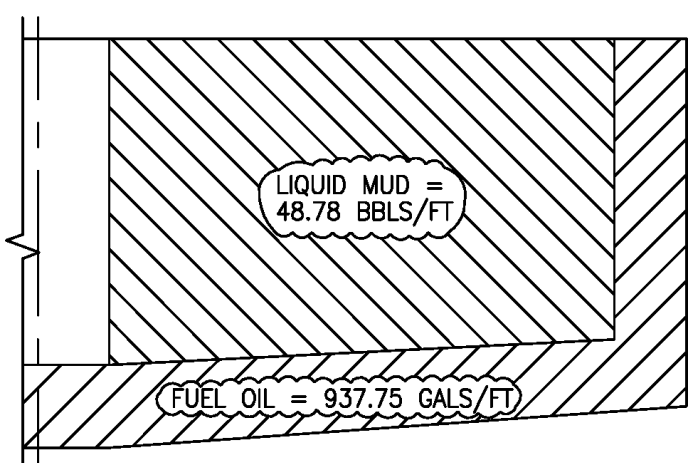
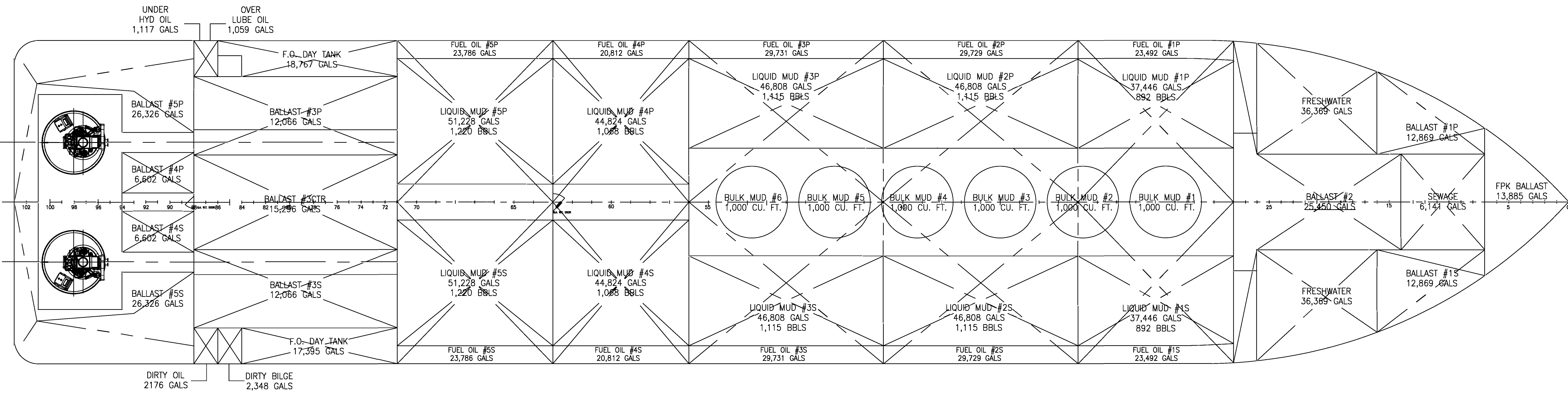
REVISIONS			
REV.	DESCRIPTION	DATE	BY

NO	DESCRIPTION	DWG NO
REFERENCES		

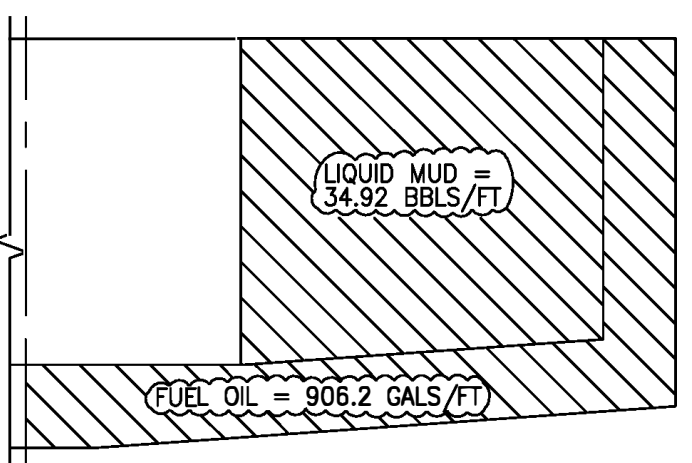
GENERAL ARRANGEMENT

CHKD. BY	DWG. BY	DATE	SCALE	HULL NO.	DRAWING NO.	SHEET
	FJB	1/23/07	1/8"=1'-0"	113	257-G02-01	1 OF 1
						REV

REVISIONS			
REV.	DESCRIPTION	DATE	BY



CAPACITIES:
 LIQUID MUD: 8,576 BBL.
 BULK MUD: 6,000 CU.FT.
 FUEL OIL: 181,342 GALS.



NO	DESCRIPTION	DWG NO
REFERENCES		
This drawing, design concept, and specifications are the property of		
HOLD PLAN		

CHKD. BY	DWG. BY	DATE	SCALE	HULL NO.	DRAWING NO.	SHEET
-	-	9/16/08	1/8"=1'-0"	113, 114	301-G03-01	1 OF 1
						REV 0