



**2014 DP2 PLATFORM SUPPLY VESSEL**

### Vessel Characteristics

Length, Overall:	272 ft	82.9 m
Beam:	58.1 ft	17.7 m
Depth:	20 ft	6.1 m
Maximum Draft:	16.4 ft	5 m
Light Draft:	6.9 ft	2.1 m
Minimum Height:	85.1 ft	25.9 m
Freeboard:	3.3 ft	1 m
Displacement:	5,650 lt	5,740 mt
Deadweight:	3,520 lt	3,580 mt
Clear Deck Space:	190 x 51 ft	58 x 16 m
Clear Deck Area:	9,450 ft <sup>2</sup>	880 m <sup>2</sup>
Deck Strength AFT:	1,020 lb/ft <sup>2</sup>	5 t/m <sup>2</sup>
Class Notations:	ABS: +A1, FIFI-1, OSV, (E), +AMS, +ACCU, +DPS-2, UWILD, NVIC 2-95 Change 2 ACP, ENVIRO, GP	

### Capacities

Deck Cargo:	2,250 lt	2,290 t
Fuel Oil:	249,000 gal	940 m <sup>3</sup>
Potable Water:	33,100 gal	130 m <sup>3</sup>
Fresh Water:	437,000 gal	1,660 m <sup>3</sup>
Drill/Ballast Water:	61,700 gal	230 m <sup>3</sup>
Bulk Tanks (6 tanks):	9,230 ft <sup>3</sup>	260 m <sup>3</sup>
Liquid Mud (2.7 SG*):	10,800 bbl	1,710 m <sup>3</sup>
<small>*Max Structural Specific Gravity</small>		

## Machinery

<b>Diesel Electric Vessel</b>			
<i>Propulsive/Total HP:</i>	5,360 / 9,280		
<b>Z-Drives:</b>	Yes		
<b>Propellers (2):</b>	2 x 2000kW FPP		
<b>Kort Nozzles:</b>	2		
<b>Primary Generators (4):</b>	1,730 kw	690 v	60 hz
<i>Driven by:</i>	CAT 3512C		
<b>Secondary Generators (1):</b>	550 kw	690 v	60 hz
<i>Driven by:</i>	CAT C18		
<b>Emergency Generators (1):</b>	95 kw	480 v	60 hz
<i>Driven by:</i>	CAT C4.4		
<b>Bow Thruster (2):</b>	1xBERG BFTT419, 1xHRP 6011RT		
<i>Driven by:</i>	846kW Electric Motor		
<b>Total Thrust:</b>	28.3 st	25.7 mt	

## Deck Equipment

<b>Anchors (2):</b>	4710 LBS AC-14 HHP
<b>Anchor Chain:</b>	250 m of 40 mm chain per side
<b>Windlass:</b>	COASTAL MARINE EQUIP.
<b>Crane (1):</b>	4.5 t @ 6.1 m

## Accommodations

<b>No. of Berths:</b>	36
<b>Cabins:</b>	2x1-man, 15x2-man & 1x4-man
<b>Certified to Carry:</b>	36
<b>Galley seating:</b>	20
<b>Hospital:</b>	Yes

## Tonnage

<b>Tonnage (ITC):</b>	2918 GT	1310 NT
-----------------------	---------	---------

## Performance\*

<b>Fuel Consumption Vs Speed</b>		
<i>Maximum:</i>	25.4 m <sup>3</sup> /day (280 gph) @ 13.5 knots	
<i>Cruising:</i>	14.7 m <sup>3</sup> /day (160 gph) @ 11 knots	
<i>Economical:</i>	11.8 m <sup>3</sup> /day (130 gph) @ 10 knots	
<i>Standby:</i>	1 m <sup>3</sup> /day (11 gph) @ 0 knots	
<b>Range @ 11 Knots:</b>	16,900 nm	
<b>Transfer Rates</b>		
<i>Fuel Oil:</i>	750 gpm @ 230 ft	170 m <sup>3</sup> /h @ 69 m
<i>Fresh Water:</i>	400 gpm @ 230 ft	91 m <sup>3</sup> /h @ 69 m
<i>Drill/Ballast Water:</i>	750 gpm @ 200 ft	170 m <sup>3</sup> /h @ 61 m
<i>Bulk:</i>	25.6 cfm @ 180 ft	43.5 m <sup>3</sup> /h @ 56 m
<i>Liquid Mud:</i>	1000 gpm @ 230 ft	230 m <sup>3</sup> /h @ 69 m

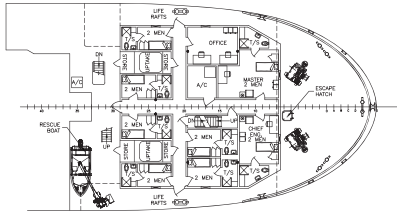
## Nav/Comms Equipment

<b>Radar(s):</b>	2
<b>Depth Sounder:</b>	1
<b>Cyro Compass:</b>	3
<b>Wind Speed Indicators:</b>	3
<b>Doppler Log:</b>	1
<b>Radio:</b>	3 x VHF; 1 x SSB
<b>Sat Com:</b>	1 X FELCOM18

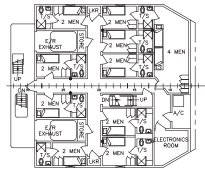
## Special Equipment

<b>Firefighting:</b>	FiFi-1
<b>Dynamic Positioning:</b>	DP-2
<b>Ref. Systems:</b>	3 x MRU; 3 x DGPS 1 x Microwave-based; 1 x Laser-based
<b>Mud Mixers:</b>	Yes
<b>Tank Cleaning:</b>	Yes
<b>Rescue Boat:</b>	RSQ 450A
<b>Reefer Sockets:</b>	3x 460V 35A; 3x 120V 20A
<b>Misc:</b>	MSD - 32 Persons; BHS Water Traps Only

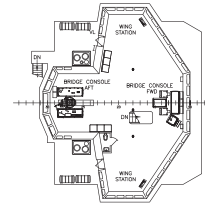
# General Arrangement



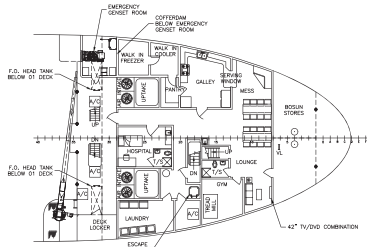
02 DECK PLAN (FOCSLE)



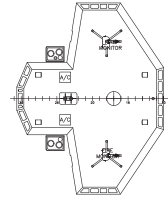
03 DECK PLAN



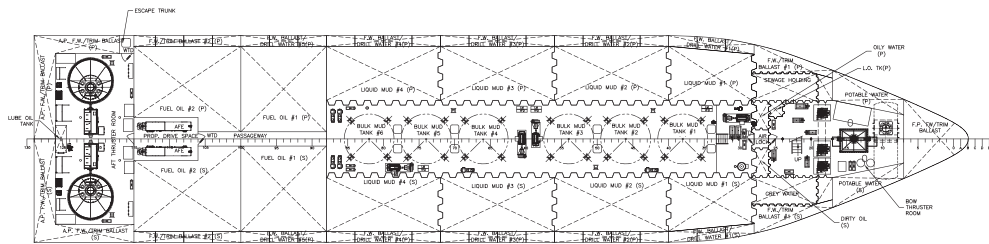
BRIDGE DECK PLAN



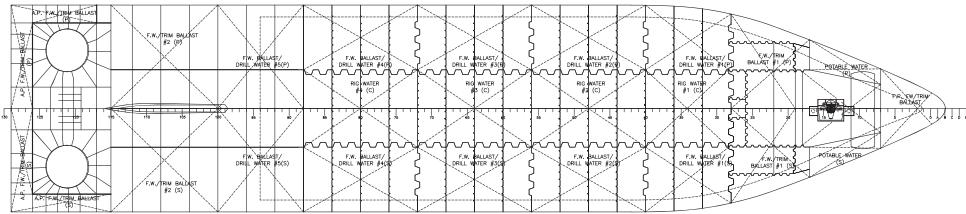
01 DECK PLAN



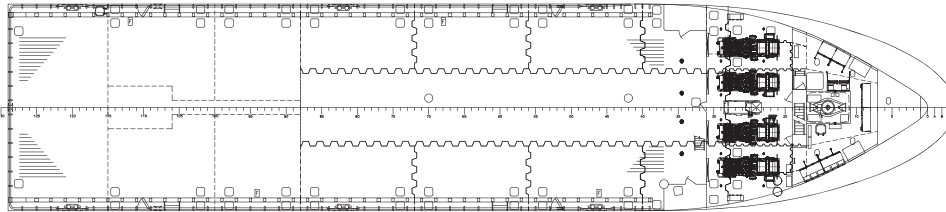
PILOTHOUSE TOP



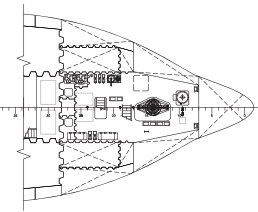
HOLD PLAN



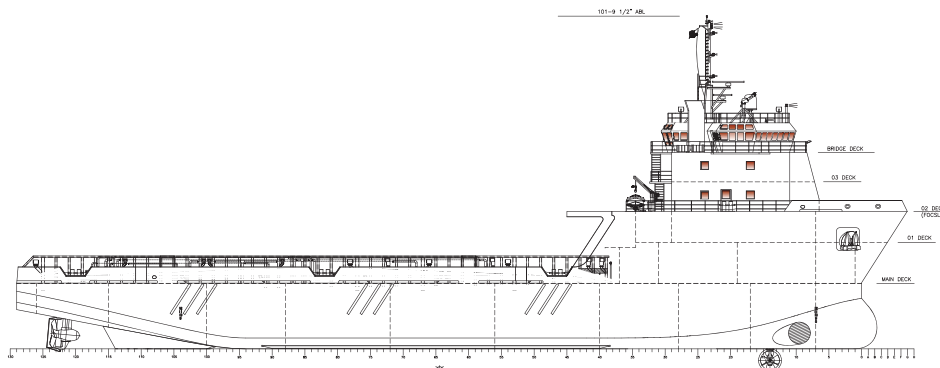
DOUBLE BOTTOM PLAN



MAIN DECK PLAN



FIRST PLATFORM PLAN

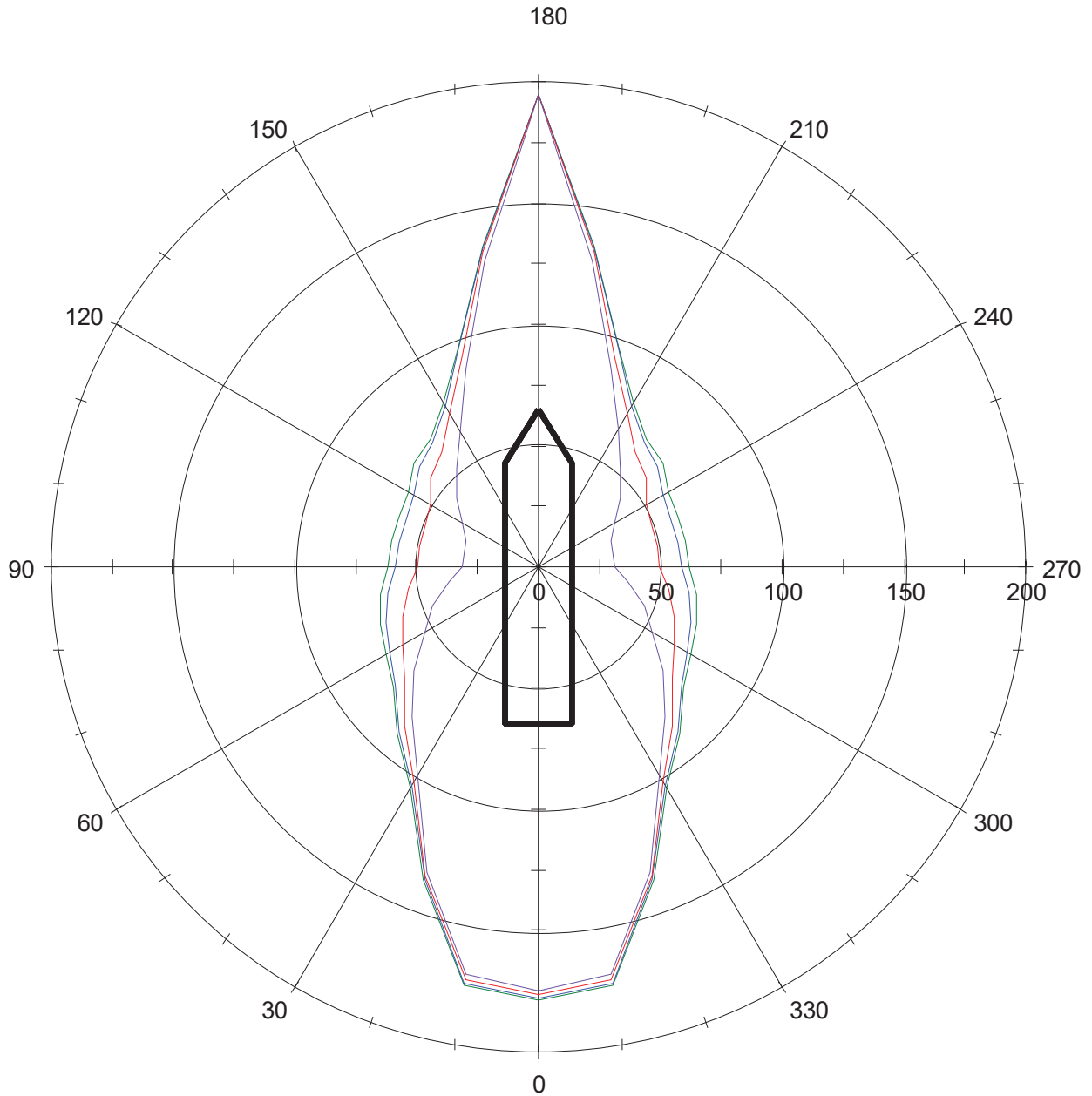


OUTBOARD PROFILE



# DP Capability Plot

Run : All Online, 100%



- Wind [knots], Current = 0 knots
- Wind [knots], Current = 1 knots
- Wind [knots], Current = 2 knots
- Wind [knots], Current = 3 knots