

1600 T SWL Floating Crane Barge



FLOATING CRANE BARGE

Floating Crane	: 1,600 Tons
Classification	: RINA
L.O.A.	: 91,44
LBP	: 87,78
Breadth	: 27,43
Depth	: 6,10
Draught (Min)	: 1,60
Draught (Load Max)	: 4,875
Gros Ton	: 4,223
DWT	: 8,757
Hull (build of year)	: 2007
Floating Sheerleg (build of year)	: 2025

ANCHOR WINCH	1 set
Chain Spec	: 56 mm
Holding Load	: 110 T / 10m/min

MAIN HOISTING WINCH

Main Hook	: 400 ton x 4 set
Capacity	: 38 ton / 25 m/min
Wire Spec.	: \varnothing 40 / 2 x 2,200m + 2 x 2,445m = Total 9,290m

AUX HOISTING WINCH

Aux Hook	: 60 ton x 2 set
Capacity	: 20 ton / 24 m/min
Wire Spec.	: \varnothing 40 / 2 x 840 = Total 1,680m

LUFFING WINCH

Capacity	: 38 ton / 25 m/min
Wire Spec.	: \varnothing 40 / 2 x 4,300m = Total 8,600m

MOORING WINCH	6 set
Capacity	: 30 ton / 10 m/min
Wire Spec.	: \varnothing 40 x 750 m

Floating Crane Barge
Lifting Capacity: 400 Tons x 4
Lifting Capacity MAX: 1,600 Tons

TECHNICAL DATA

Main

Generator : 3 sets,
 capacity 520 kw type
 6M33D633E200
 4 cycle,
 1500 rpm.

Harbour

Generator : 2 sets
 6M16G250/5 20 kw
 4 cycle 1500 rpm

Ballast Pump

: 2 sets
 ECO SNL 150-315
 capacity 250 m3 / 30 kw

Fire Pump

: 2 sets
 ECO SNL 65-200
 capacity 50 m3 / 15 kw

NAVIGATIONS

Public Addressor

Auto Telephone Exchange , 1 set

Common Battery Telephone, 1 set

Fire & General Alarm System, 1 set

Portable Telephone System, 1 set

CCTV Camera System, 1 set

Navigation Light, 1 set

PERFORMANCE

Lifting Capacity

Lifting Speed : 1,600 tons

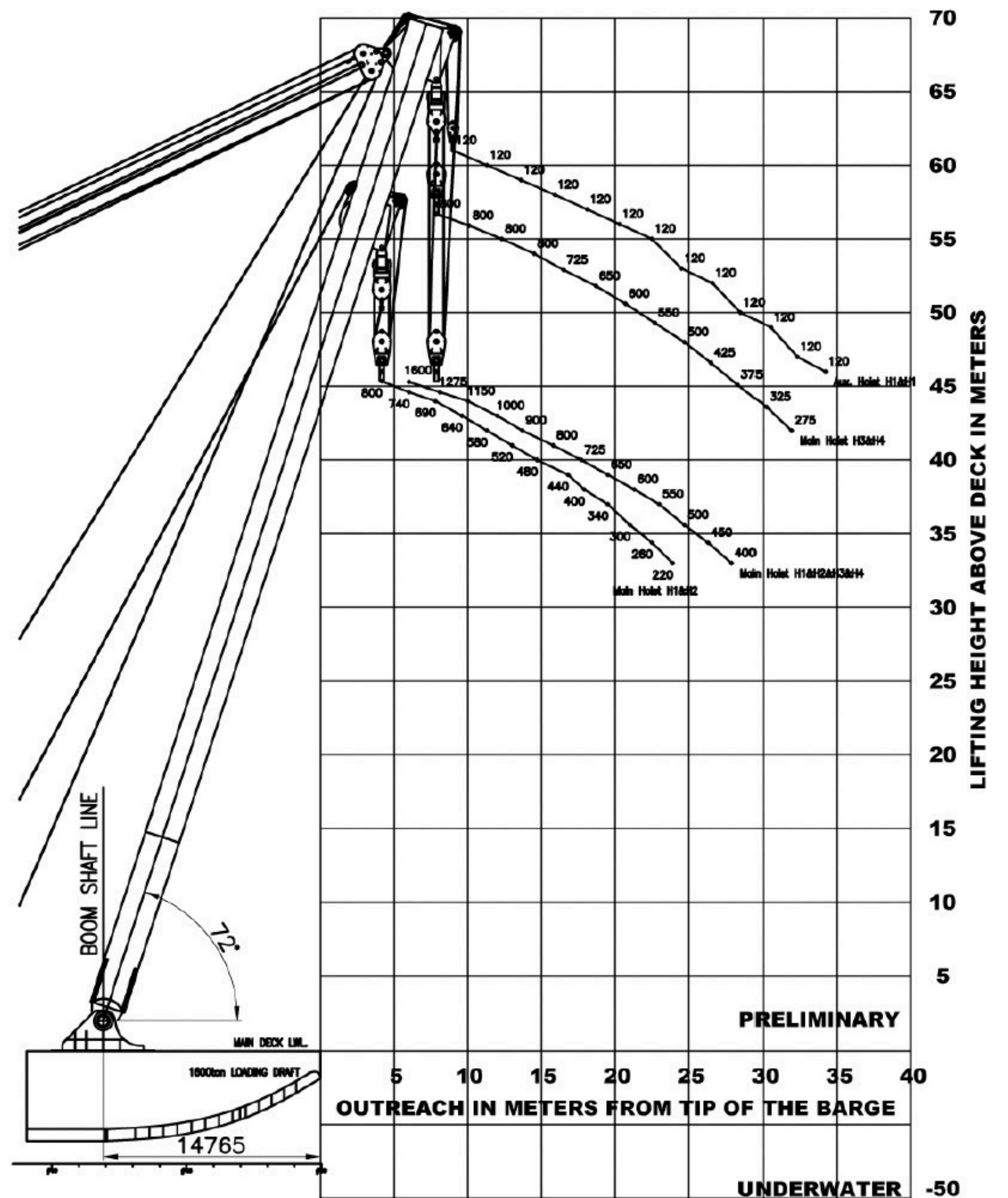
Main Hooks Liftings Leight : 1,4 m/min

Underwater : 71,00 m

: - 50,00 m

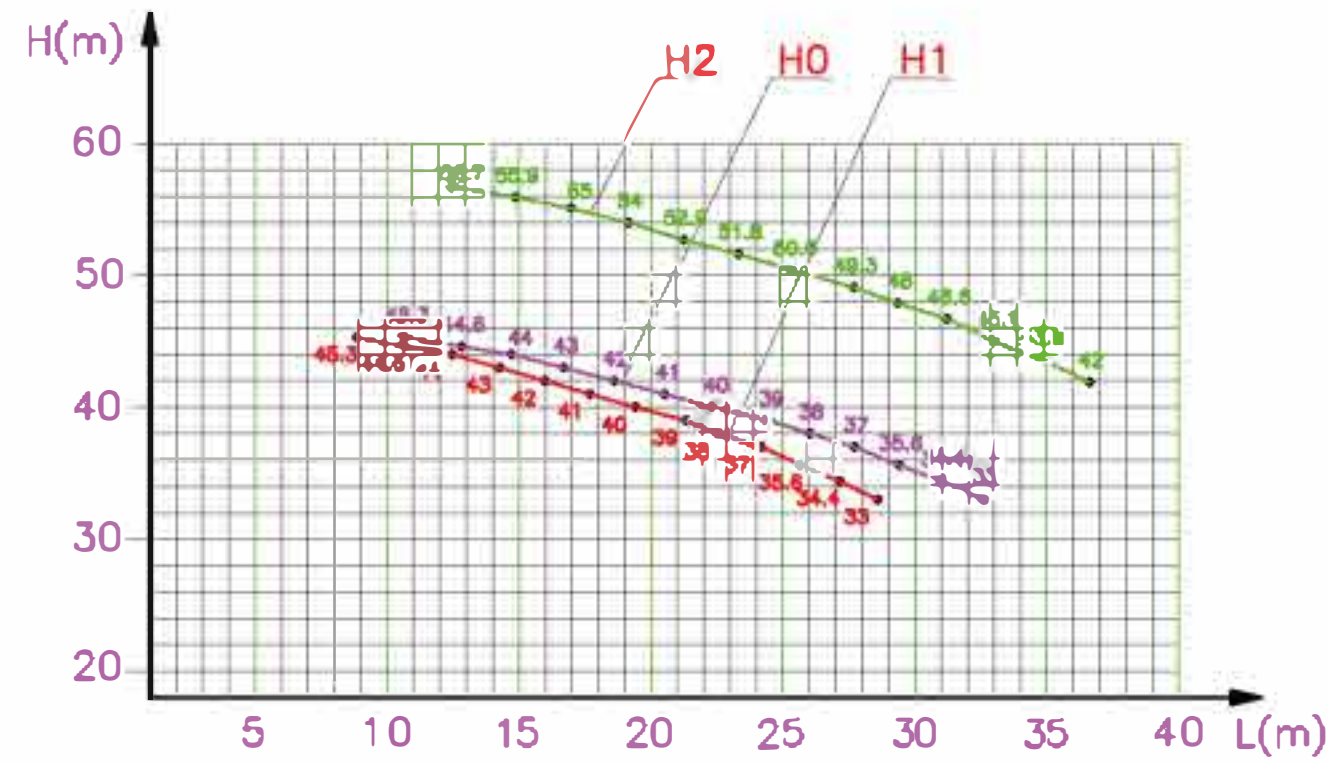
ACCOMMODATION

Total Capacity : 20 Persons

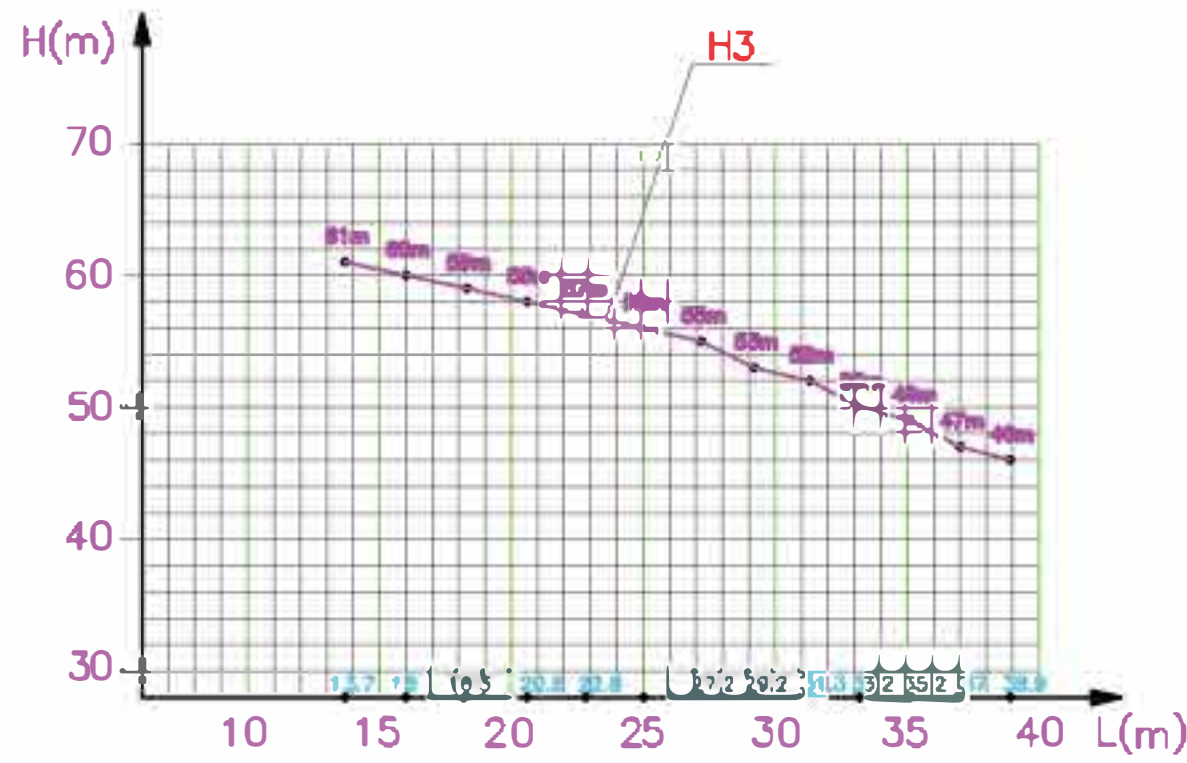


LIFE SAVING & FIRE EXTINGUISHER ENDOWMENT
 20 Persons

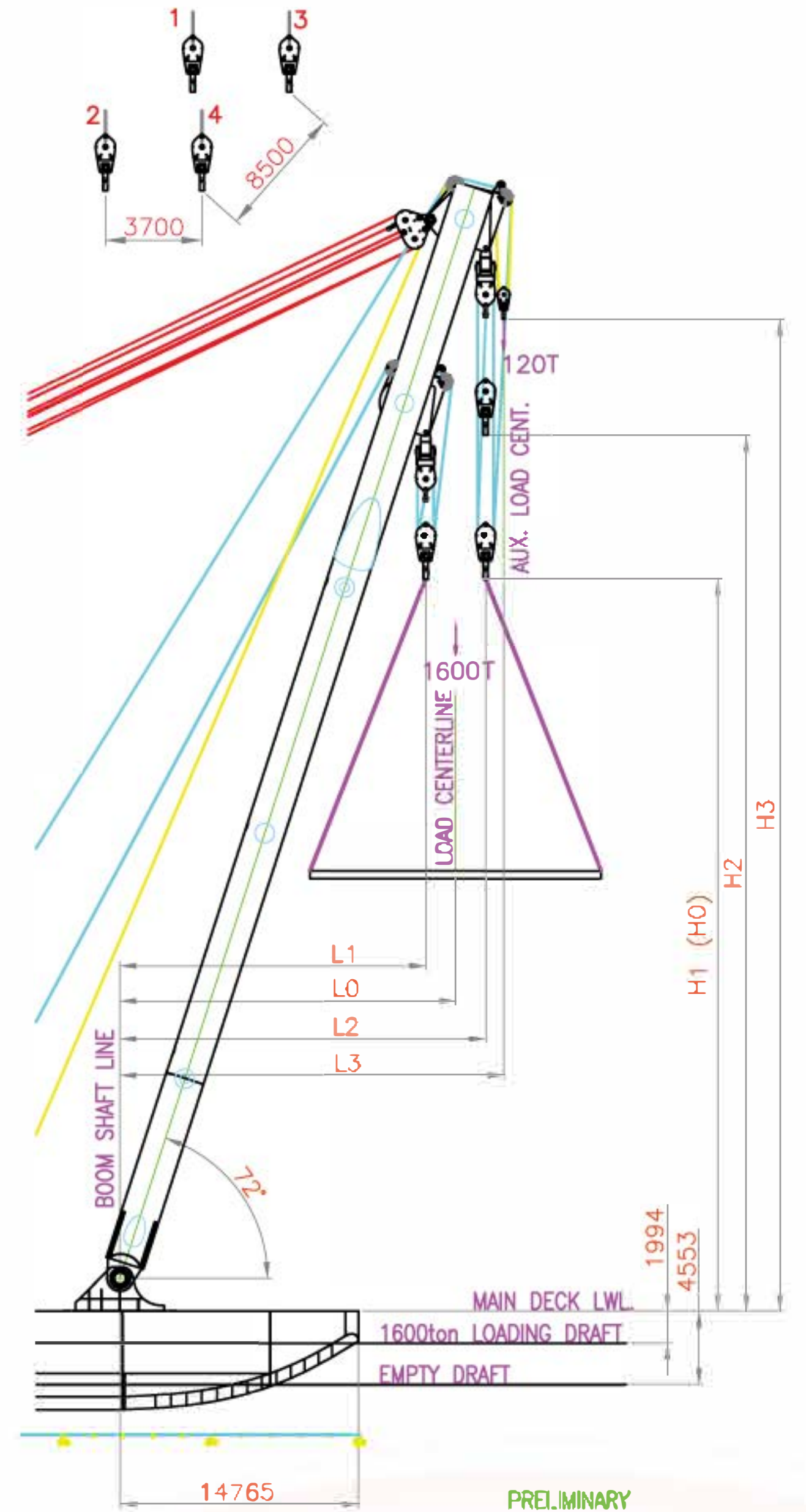
HIGH-ALTITUDE LIFTING PERFORMANCE OF MAIN HOST OVER DECK



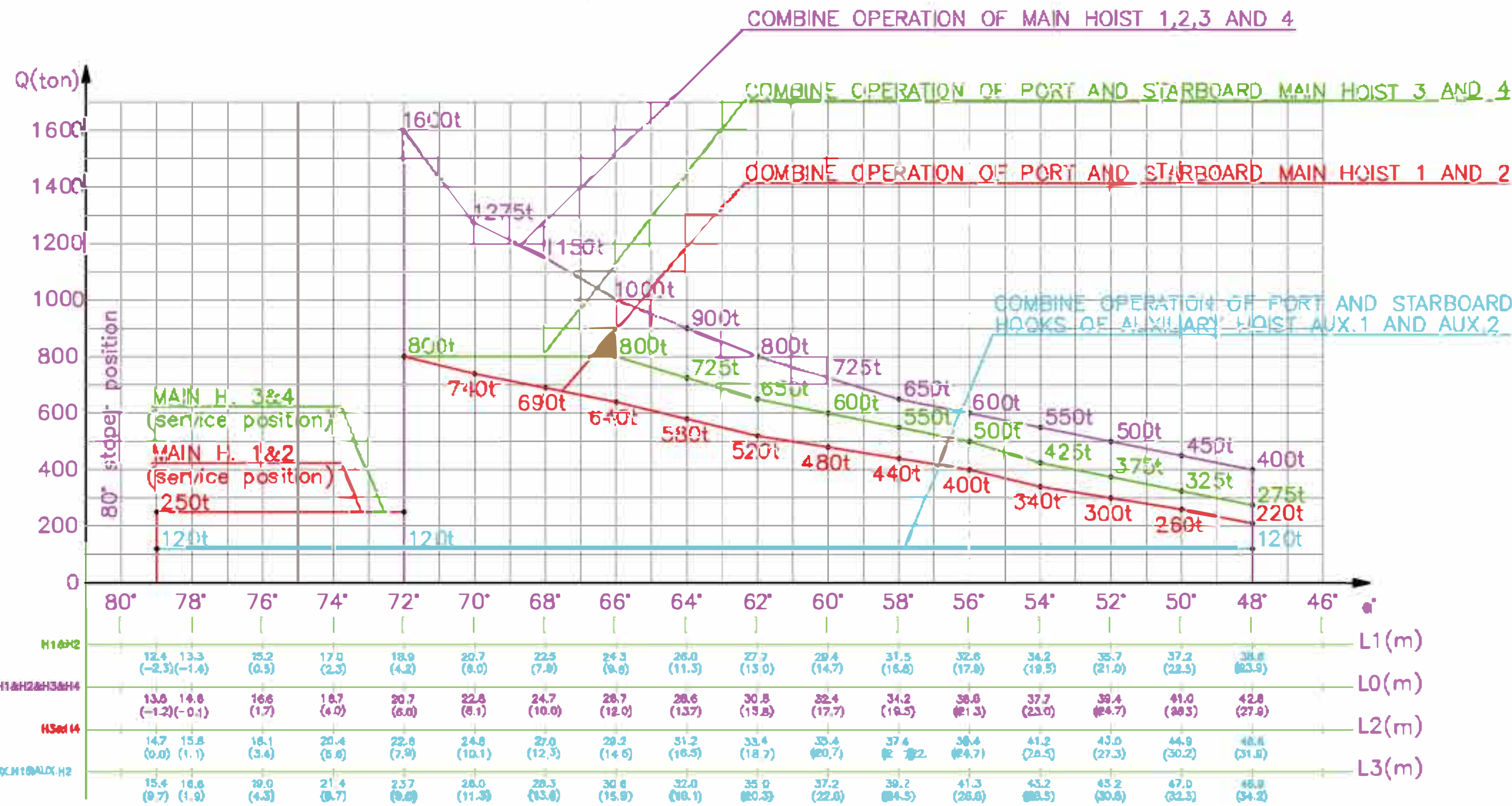
HIGH-ALTITUDE LIFTING PERFORMANCE OF AUXILIARY HOST OVER DECK



MAIN HOIST POSITIONS (72°)



LIFTING CHARACTERISTICS

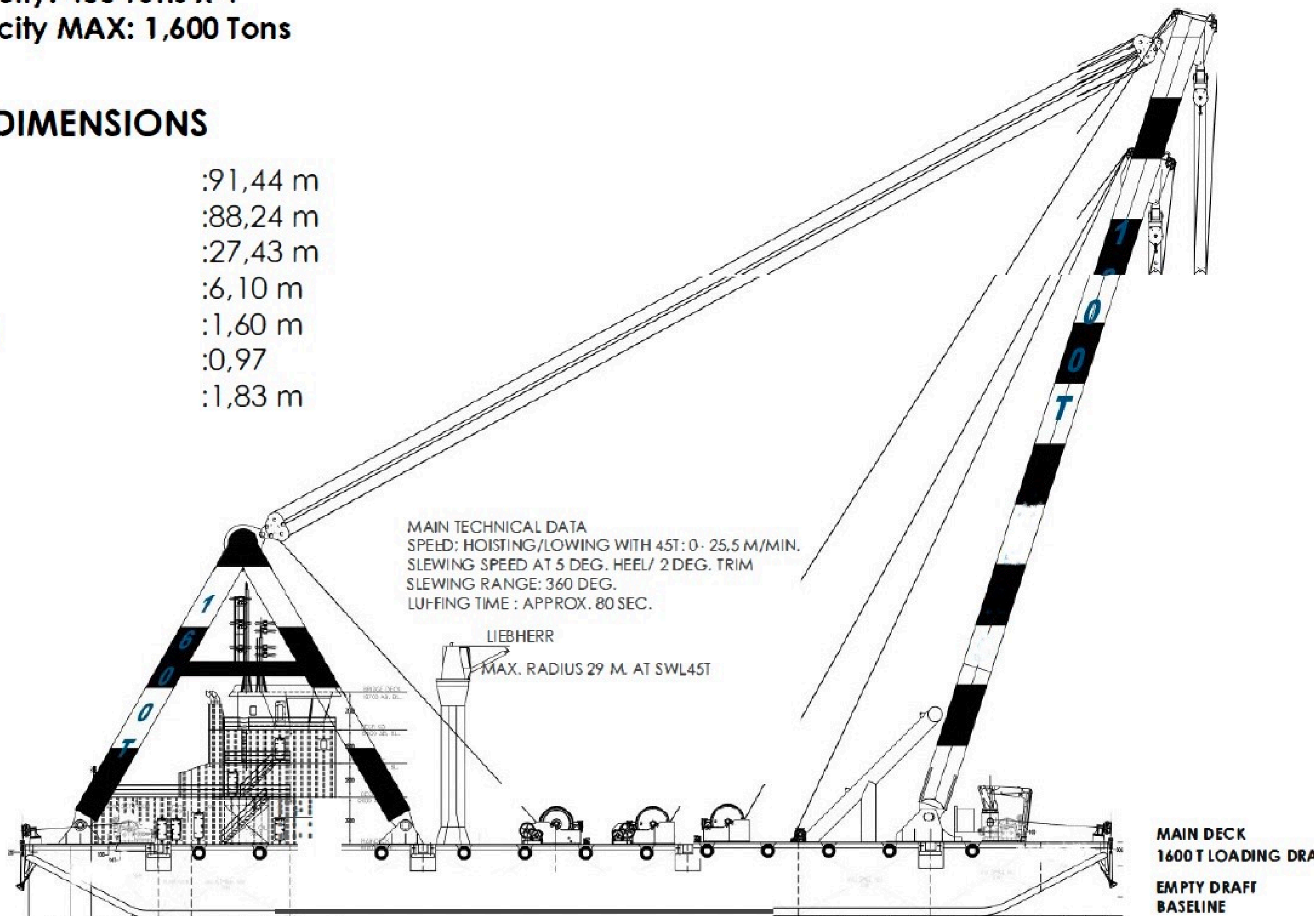


*Values in brackets are from the tip of the barge.

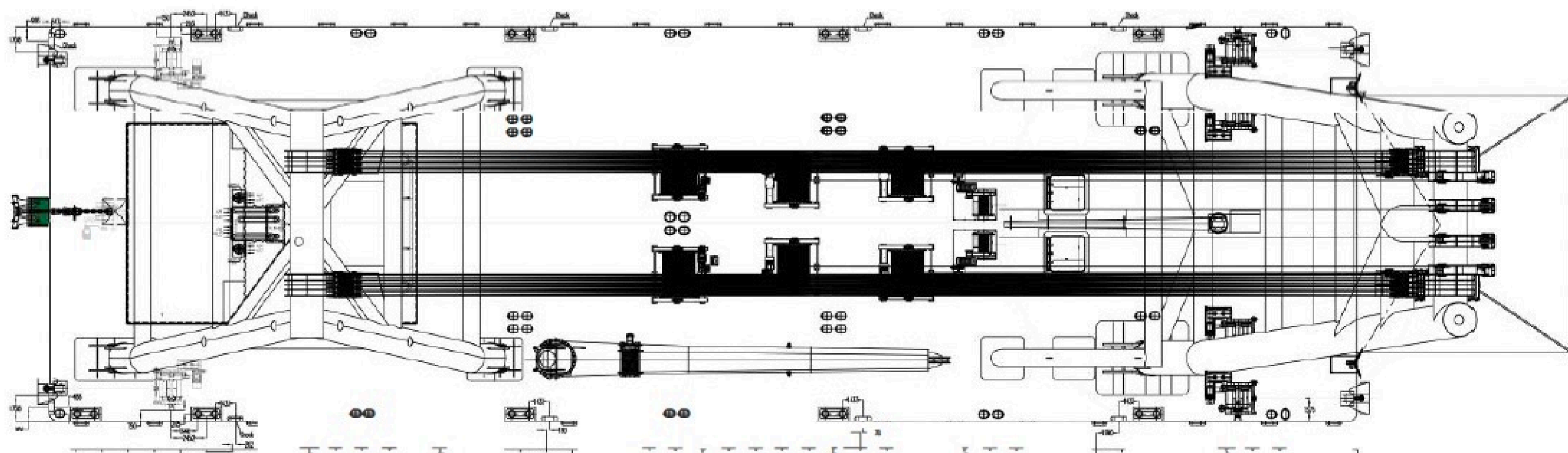
Floating Crane Barge
Lifting Capacity: 400 Tons x 4
Lifting Capacity MAX: 1,600 Tons

MAIN DIMENSIONS

LOA	:91,44 m
LWL	:88,24 m
BREADTH	:27,43 m
DEPTH	:6,10 m
Draught(min)	:1,60 m
CB	:0,97
FRAME	:1,83 m

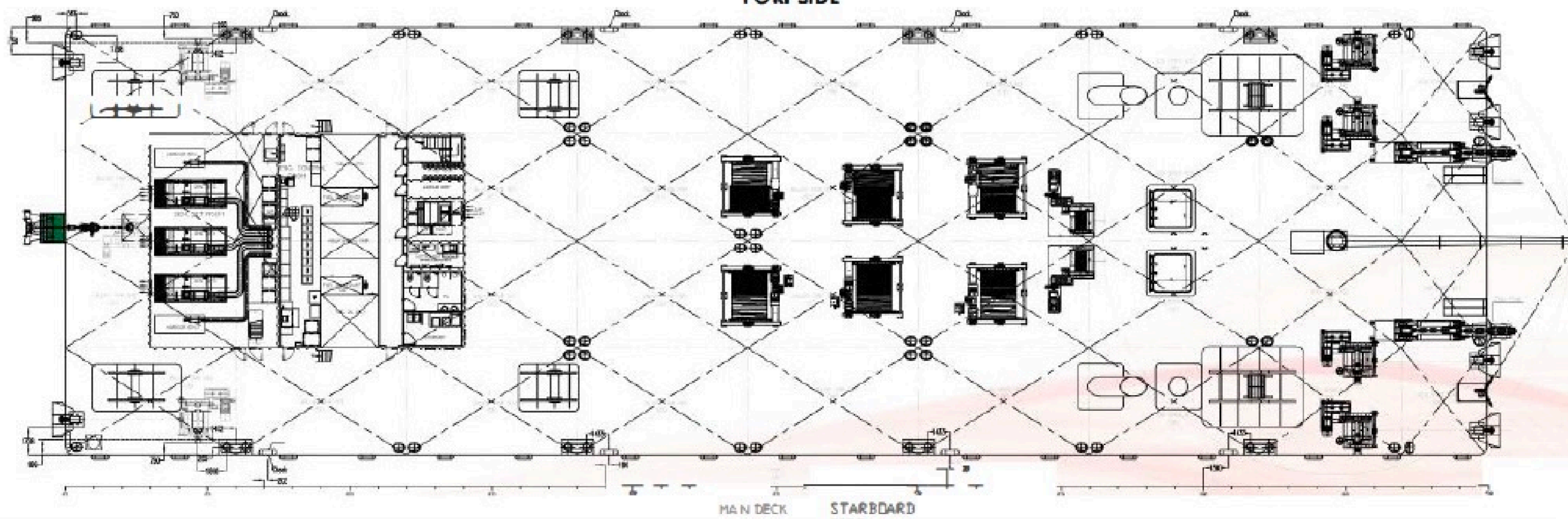


PROFILE VIEW



MAIN DECK

PORT SIDE



MAIN DECK
 STARBOARD
 SIDE