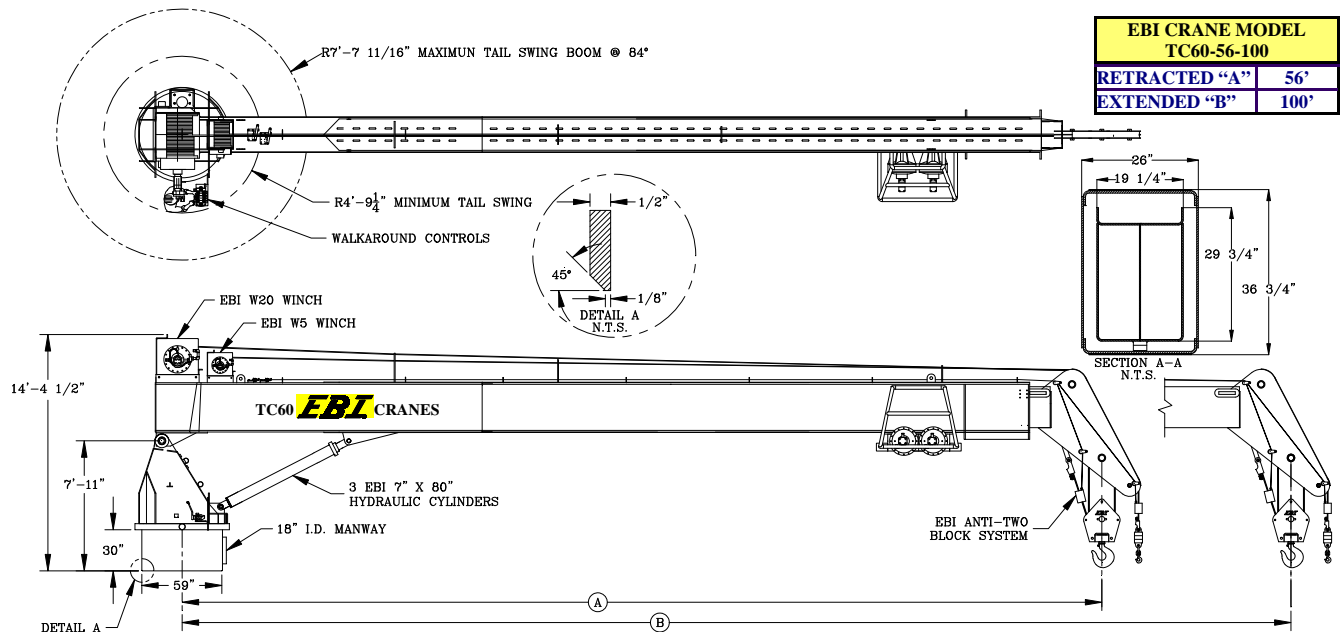


MODEL TC60-56-100 TELESCOPIC BOOM CRANES



EBI CRANE MODEL TC60-56-100	
RETRACTED "A"	56'
EXTENDED "B"	100'

STANDARD EQUIPMENT:
<i>EBI CRANES ARE LICENSED MONOGRAM CRANES UNDER API-2C SPECIFICATIONS.</i>
<i>EBI CRANES MEET OSHA REQUIREMENTS.</i>
<i>PLANETARY SWING MECHANISM WITH ADJUSTABLE MOUNT, HIGH TORQUE MOTOR AND AUTOMATIC SPRING APPLIED BRAKES.</i>
<i>DOUBLE HYDRAULIC SWIVEL FOR CONTINUOUS ROTATION.</i>
<i>INDUCTION HARDENED CHROME PLATED CYLINDER RODS.</i>
<i>18" I.D. MANWAY WITH BOLTED COVER.</i>
<i>THREE COLOR, SAFE LOAD INDICATOR GAUGE.</i>
<i>RACK AND PINION TELESCOPIC SYSTEM. THERE ARE NO INTERNAL BOOM CYLINDERS.</i>
<i>LOAD LINE WINCH: 2 SPEED MOTOR.</i>
<i>THREE COAT MARINE PAINT SYSTEM.</i>
<i>ANTI-FRICTION BEARINGS IN THE SHEAVES.</i>
<i>BRONZE BUSHINGS ON ALL PIVOTING POINTS.</i>
<i>LOAD TEST AT TWICE API OFFBOARD LOAD BEFORE SHIPPING.</i>

OPTIONAL EQUIPMENT:
<i>EBI CRANES TO MEET ABS AND USCG REQUIREMENTS.</i>
<i>CRANE CONTROL LOCATIONS</i>
<i>- PEDESTAL MOUNTED WALKAROUND</i>
<i>- REMOTELY LOCATED</i>
<i>- VARIOUS PLATFORM CONFIGURATIONS</i>
<i>- CAB MOUNTED JOY STICK TYPE</i>
<i>SOLAR/BATTERY POWERED BOOM BEACONS.</i>
<i>BOOM LIGHTING.</i>
<i>COMPLETE HYDRAULIC SAFETY SYSTEM DETECTING THE MOMENT INDUCED BY LOAD ON THE CRANE TO HELP PREVENT OVERLOAD CONDITION.</i>
<i>POWER UNITS CAN BE CRANE MOUNTED OR REMOTELY LOCATED.</i>
<i>POWER UNITS: ELECTRIC MOTOR, AIR MOTOR, OR DIESEL ENGINE (DETROIT DIESEL, CUMMINS, CATERPILLAR, DEUTZ AIR COOLED, ETC.).</i>
<i>DIESEL ENGINE STARTER SYSTEMS: ELECTRIC, AIR OR HYDRAULIC.</i>
<i>AIR/HYDRAULIC OIL HEAT EXCHANGER.</i>
<i>17-4 PH STAINLESS STEEL, HEAT TREATED, CHROME PLATED CYLINDER RODS.</i>
<i>17-4 HH1150 STAINLESS STEEL, HEAT TREATED PINS.</i>
<i>FAST LINE WINCH DESIGNED FOR PERSONNEL HANDLING. WINCH CAPACITY IS 5000 LB. LINE PULL. (1000 LB. FOR PERSONNEL)</i>
<i>ANTI-TWO BLOCK SYSTEM.</i>
<i>EMERGENCY LOAD LOWERING SYSTEM.</i>

