

2024 | 25T SWL
AHC Knuckleboom
Subsea Crane

AHC KNUCKLE BOOM CRANE

This knuckle boom crane for subsea applications, is designed to deliver exceptional performance in extreme conditions.

General Information

Crane Type: **Knuckle boom crane for subsea applications.**

Technical Specifications

- Lifting Capacity: **25 tons at 10 meters and 10 tons at 20 meters.**
- Maximum Working Radius: **20 meters.**
- Hook Stroke: **500 meters.**
- Advanced Systems: **AHC (Active Heave Compensation), AOPS (Automatic Overload Protection System), MOPS (Manual Overload Protection System).**
- Operator Cabin: **Fully equipped operator cabin with ergonomic seat, stainless steel structure, thermal insulation, LCD display, and HVAC system.**
- Hydraulic Power Unit: **200+200 kW hydraulic power unit supplied with a dedicated 20-foot container, protected and equipped with heat exchangers and electric panels.**
- Certifications: **Lloyd's Register certified for offshore applications**



BENEFITS AND UNIQUE FEATURES

Key Benefits:

Compact and solid crane, fully certified, available for sale with LR certifications. Super-fast delivery due to a clever and mature design and a well-organized supply chain. Full load test within 8 months or less from order.

Applications:

Usage Sectors:

Subsea applications for mattress installation and other offshore operations and shipbuilding.

Unique Features:

The HR650 is equipped with the most advanced technologies to ensure safety, reliability, and efficiency.

Additional Information:

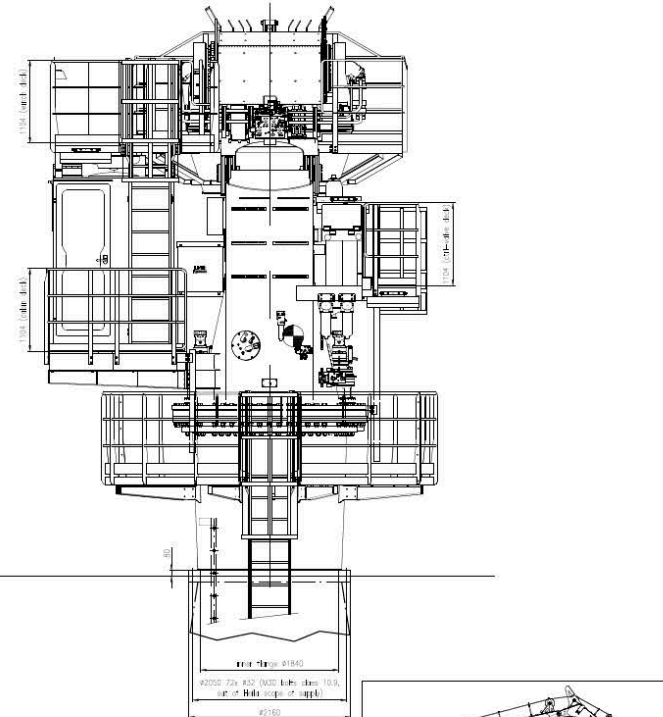
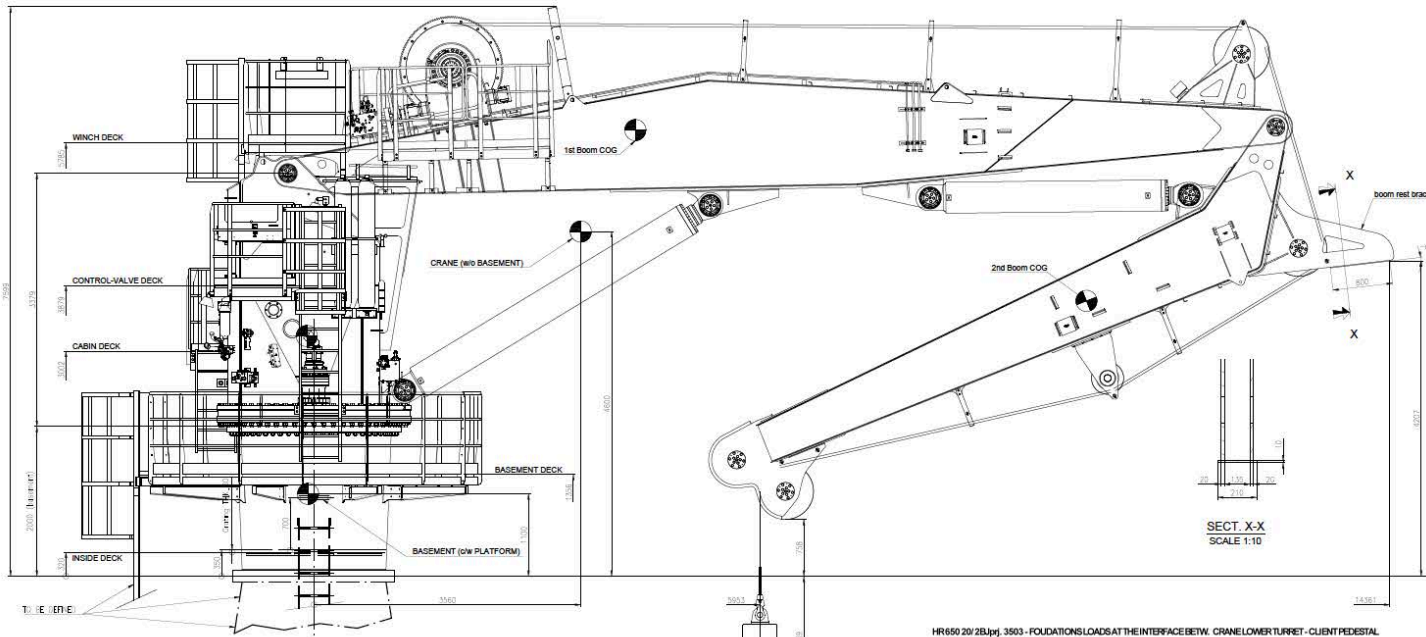
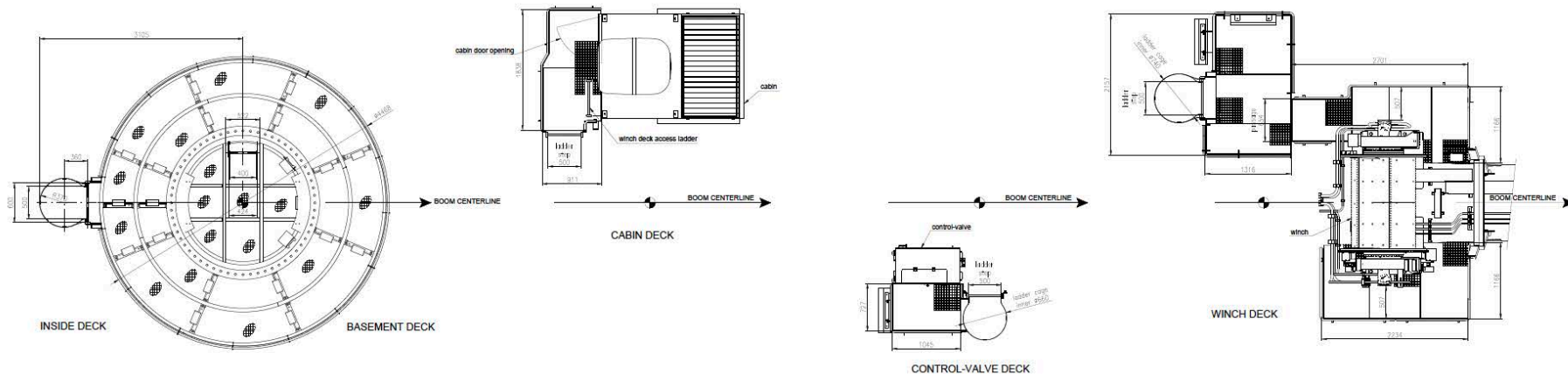
Availability Date:

8 months from order, for the factory acceptance test.

Price:

Competitive price 1,688,000.00 Euro





HR 650 20/2B (pr. 3503) - FOUNDATIONS LOADS AT THE INTERFACE BETW. CRANE LOWER TURRET - CLIENT PEDESTAL
(load condition: dynamic with max-in-service wind)

use of crane	bending			axial			shear			torque			configuration		
	M	N	F	T	U	V	W	X	Y	Z	radius	capacity	ship to ship	ship to platform	ship to wharf
ship to platform	6528	-429	99	673	2,7	80,2	17,70	32,7	1,569	1,2	70	10	1,569	1,2	1,569
ship to wharf	6560	-472	103	642	34,2	91,7	14,40	32,30	1,669	1,2	70	10	1,669	1,2	1,669
sub sea surface	7528	-948	199	745	67,1	96,8	13,4	17,6	1,707	1,2	70	10	1,707	1,2	1,707

FOUNDATION LOADS TO BE INDICATED IN THE GA.

bending moment	7528	kNm
vertical force	-948	kN
axial force	199	kN
torque	745	kNm

Note
1 load condition: dynamic with max-in-service wind
2 no further amplification (e.g. pedestal factor) has been applied to the above loads

CRANE TECHNICAL DATA		
Mass weight of crane (w/o. basement)	46,7	t
Mass weight of basement (w/o. platform)	4,4	t
Slowing angle	360	degrees
Slowing speed	1,0	rpm
Boom lifting time	64	s
Rot. trundle time	43	s
Hoisting speed, average, normal A/B	35/65	m/min
Hook travel	500	m
Winch pull (normal wind size)	25	t
Total length of rope	540	m
Rope diameter	34	mm
HPU size	400(2x200)	kg
Supply	440/60/3	VAC/Hz/Ph
Oil pressure, max	320	bar
Oil flow, max	720(2x360)	l/min
Oil tank capacity	2500	lit

