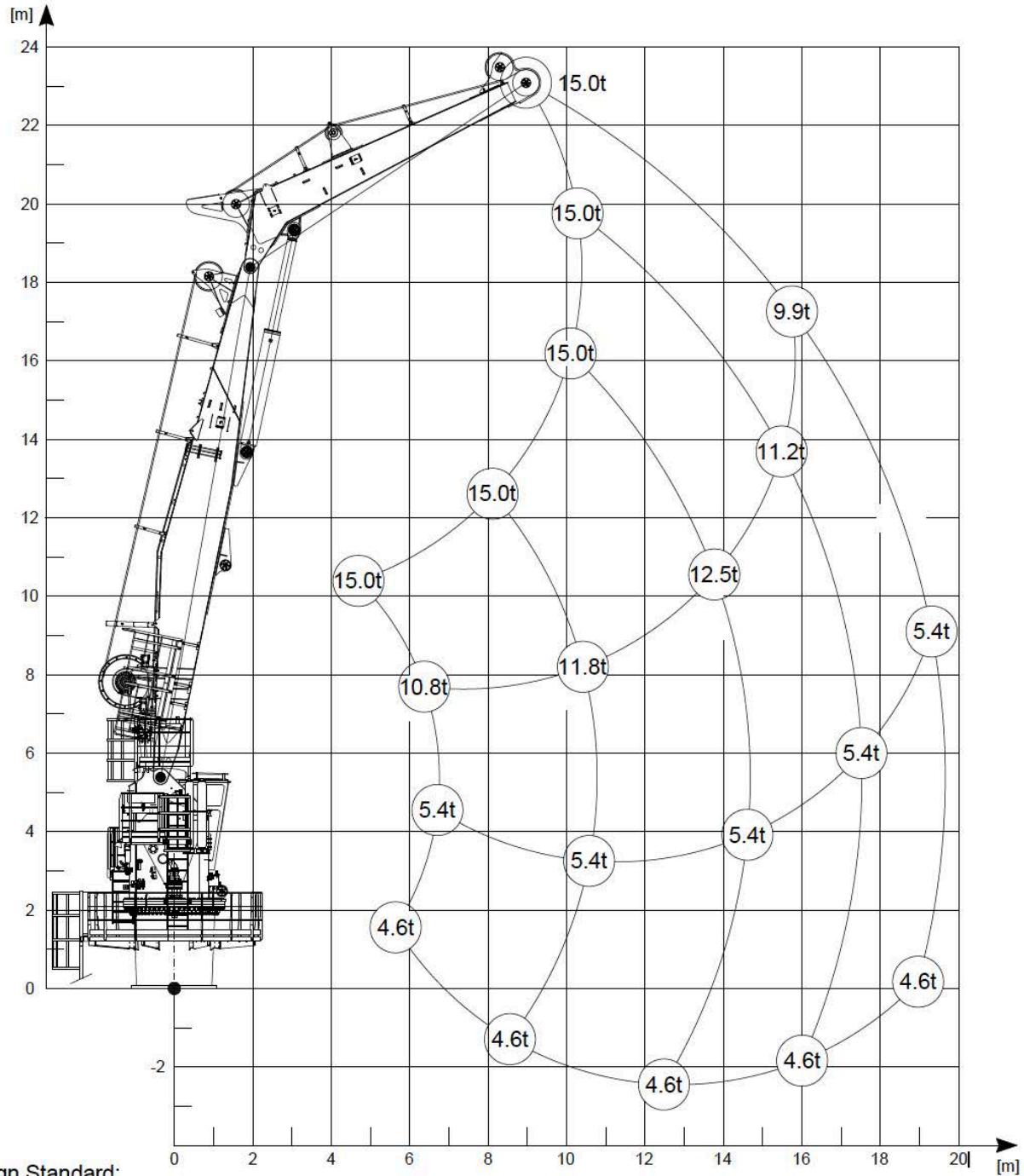


# Ship to Ship Load Chart



Design Standard:  
LAME/2021

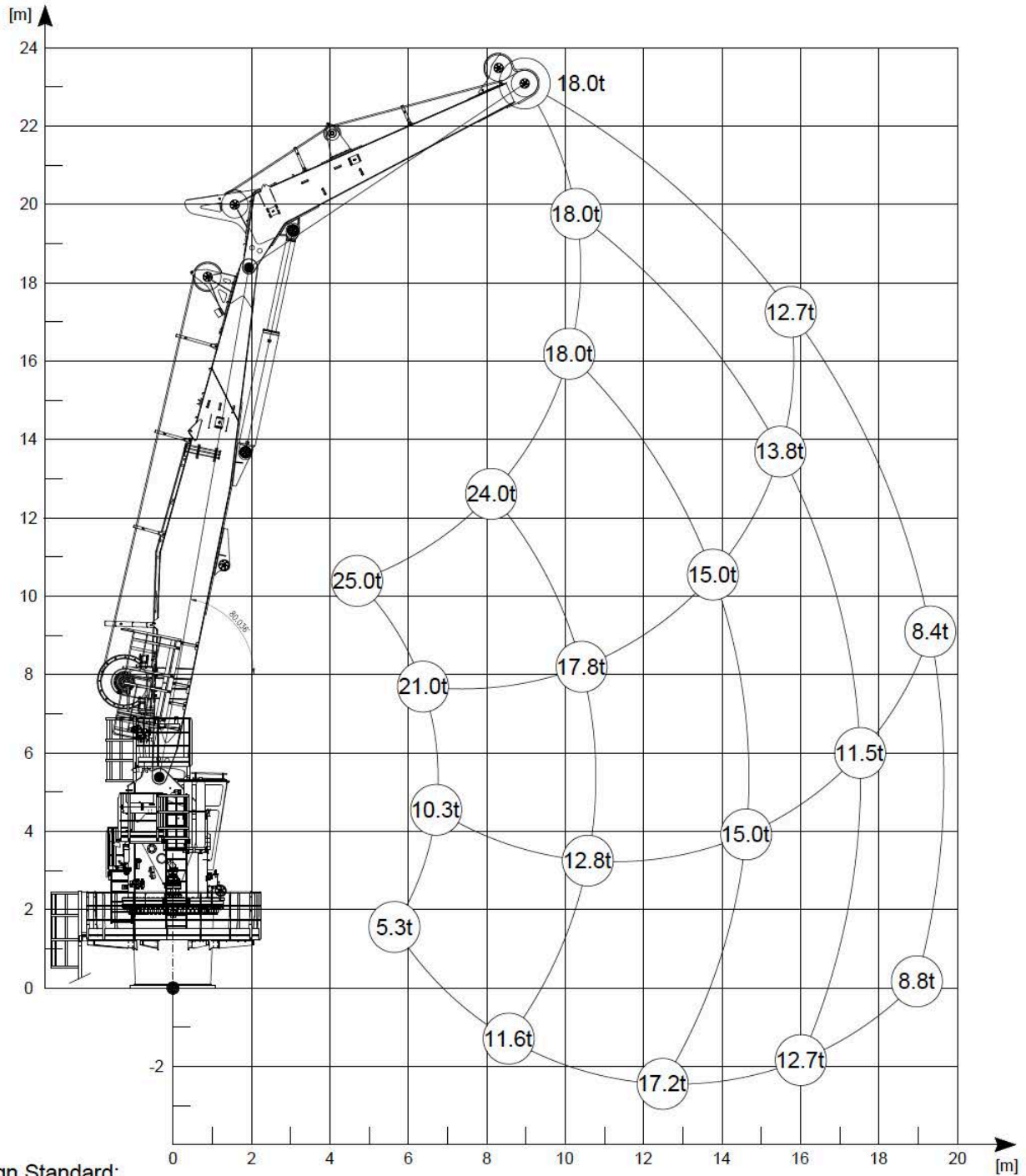
Intended use:  
SHIP-TO-SHIP operations

Operational conditions:  
- significant wave height 1.5 m  
- static heel/trim 5°/2°  
- wind speed 25 m/s

Hoisting speed:  
35 m/min

Reeving arrang.:  
single fall

# SubSea Loading Chart



**Design Standard:**  
LAME/2021

**Intended use:**  
SUBSEA operations

**Operational conditions:**  
- significant wave height 1.5 m  
- static heel/trim 5°/2°  
- wind speed 25 m/s

**AHC Hoisting speed:**  
absolute: 5 m/min  
(compens.: 65 m/min)

**Reeving arrang.:**  
single fall