

# HOS#409 | 2005 & 2007 | 9 Sister Z-Drive ASD TUGS | 27.4m | FiFi 1 | 60T BP | For Private Sale



## PRINCIPAL PARTICULARS

Year built	:	2007, 2007, 2007, 2007, 2007, 2007, 2005, 2005, 2005
Builder	:	TBD
Class	:	Lloyd's Register of Shipping

## PERFORMANCE DATA

Max speed	:	12.5 knots
Bollard pull	:	60.0 tonnes

## TANK CAPACITIES

Fuel oil	:	109.6 m <sup>3</sup>
Freshwater	:	23.0 m <sup>3</sup>
Dispersant	:	3.0 m <sup>3</sup>
Foam	:	3.0 m <sup>3</sup>

## DIMENSIONS

Length overall	:	27.40 m
Breadth moulded	:	11.50 m
Depth moulded	:	5.00 m
Draft	:	5.20 m
Gross tonnage	:	327
Net tonnage	:	98

## TOWING AND DECK EQUIPMENT

Tow winch (fwd)	:	PR-HTW/DD-20T PC-HTW/DD-20/150
Brake holding	:	150 tonnes
Line pull	:	5.0MT at 20m/min Star Voyager/Explorer/Sterling - 20/10 tonnes x 10/20 m/min
Anchor windlass	:	2 x Plimsoll PC - HNW / SD - 3/19
Deck crane	:	Palfinger 1.5T @ 6m

## MACHINERY

Main engines	:	2 x 1865kW Cat 3516B @ 1600rpm (2500bhp)
Generators	:	- 2 x 84kW Cat 4.4 @ 1500rpm - 2 x 112kW Perkins 6TWMG @ 1500rpm Sterling - 2 x 84kW Cat 3056T @ 1500rpm Z-drive Schottel SRP 1215FP
Propellers	:	

## RADIO AND NAVIGATIONAL EQUIPMENT

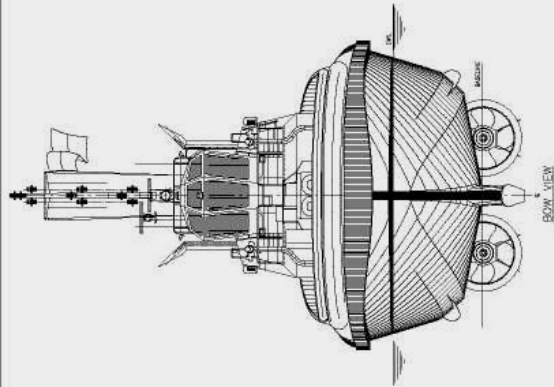
Radar	:	Furuno FR-1942 MARK 2
SSB transceiver	:	Furuno FS-2570C Star Explorer/Voyager/Sterling - Furuno FS-1570
VHF	:	Motorola GM338, Furuno FM-8800S Star Explorer/Voyager/Sterling - Furuno FM8500, Motorola GM338
Echo sounder	:	Furuno FCV-581L
Immarsat C	:	Felcom 15
Navtex	:	Furuno NX-700B Star Explorer/Voyager/Sterling - Furuno NX 500
EPIRB	:	McMurdo E3 Star Explorer/Voyager/Sterling - McMurdo 406 MHz
Talkback system	:	SEA 857
Magnetic compass	:	Dirigo WA98005 Star Explorer/Voyager/Sterling - Bellevue WA98005
Auto pilot	:	Com Nav 2001
AIS	:	Furuno FA-150 Star Explorer/Voyager/Sterling - Furuno Universal AIS - SA100

## ACCOMMODATION (FULLY AIR-CONDITIONED)

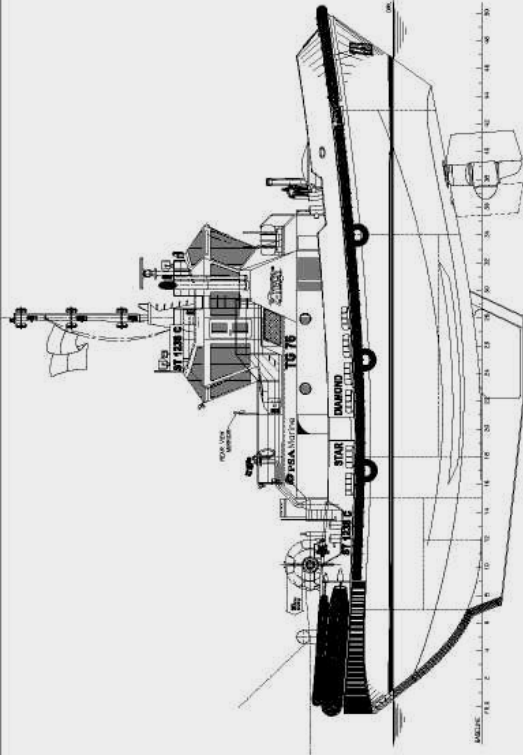
Officers	:	2 x 1 berth
Crew	:	2 x 3 berths and 1 x 2 berths
Total	:	10 berths
Sewage system	:	Taiko Kikai SBT-15

## FIRE-FIGHTING / ANTI-POLLUTION EQUIPMENT

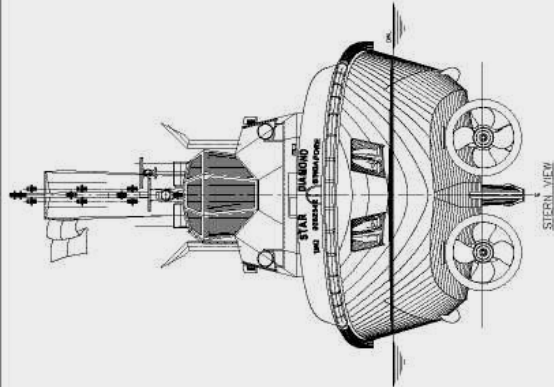
FiFi pump	:	1 x ABS SFP 1400m <sup>3</sup> /hr @ 125m head c/w water curtain - 1 x ABS SFP 1200m <sup>3</sup> /hr @ 107m head c/w water curtain 2 x SKUM Type
FiFi monitor:	:	FFS1200 dual purpose foam/water 600m <sup>3</sup> /hr each



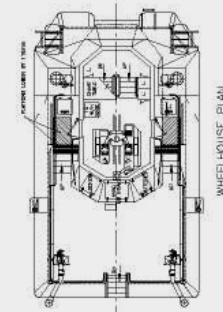
BOW VIEW



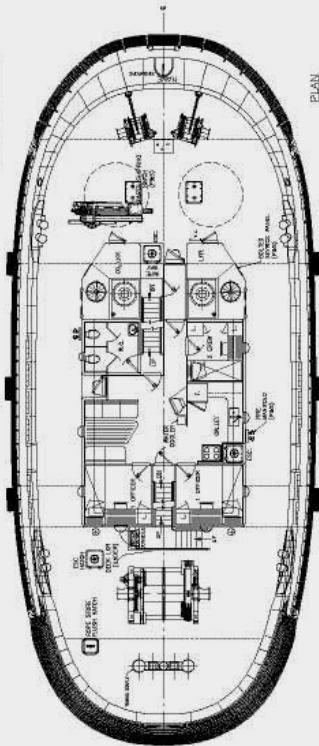
OUTBOARD PROFILE



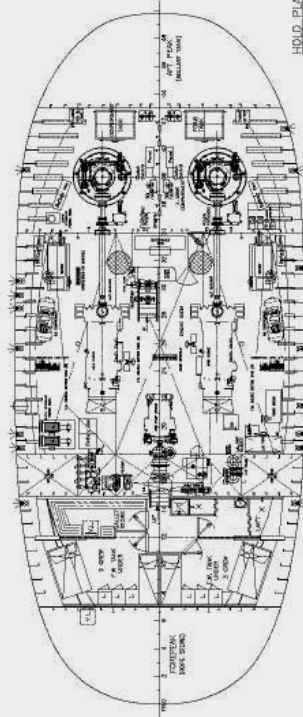
STERN VIEW



WHEELHOUSE PLAN



PLAN



HOLD PLAN

PARTICULARS  
 LENGTH OVERALL - 27' 00"  
 LENGTH WATERLINE - 25' 00"  
 BEAM, MAX. - 11' 50"  
 DEPTH, HULL - 5' 00"  
 DEPTH, MAX. - 5' 00"  
 DRAFT, MAX. - 2' 00"  
 ROLLING HULL - APP. 80 TORQUES  
 SPEED - 12 KNOTS  
 CUBIC - 10000 AT 100' W. LAGJANG