



Built 1993 - refurbished 2021 | 445 T Crane capacity |
Non- propelled
Self Elevating Jack-Up Barge

Specifications

Jack Up Barge

This versatile, self-elevating marine construction platform is designed to support the development of nearshore infrastructure. It offers exceptional flexibility, capable of operating with either a crawler crane or a tower crane. Featuring an integrated helipad and the option for 12-meter leg extensions, the platform can be customized to meet specific project requirements. With its adaptability, it's ideal for a wide range of marine construction tasks, ensuring efficiency and versatility in various operational conditions.

Specifications

Make	IHC Gusto Engineering
System	Positive engagement
Leg type	Square
Capacity (preload)	1000 ton/leg
Pontoon lifting speed	12 m/hr
Standard leg length	49 m

Tower Crane	Favelle Favco
Model	M2480D
Previous capacity main hoist	132 ton @ 20 meter
Previous boom length	64.8m

Crawler Crane	
Design crane	Kobelco SL6000
Max. operating weight of crane	445 ton
Previous capacity main hoist	130 ton @ 16 meter
Previous boom length	54m

Power sources	2 x 380V 400 kVA
Jacking generators	2 x 415v 100 kVA
Auxiliary generators	

Dimensions	35.0 X 30.3 X 4.1 m
Draft	3.1 m
Jacking Payload capacity	680t with M2480D
Classification	B.V, Offshore service unit
Capacity fuel tank	26 m ³
Capacity fresh water tank	14 m ³
Capacity sewage tank	1.5m ³
Flag State	Dampier / Australia

Mooring system	6
Number of winches	30 ton
Pulling force	60 ton
Holding force	34 mm
Wire diameter	300 m
Drum capacity	6 x 5T Delta Flipper
Anchors	(Not currently fitted)

Accommodation

Main deck: deck store, machinery rooms
Tween deck: mess room and kitchenette, jacking office, spare office, male and female toilets with showers.
Upper deck: two large offices, meeting room, emergency accommodation for eight personnel.
Vessel to Vessel transfer stairway
Helipad

Helipad

The removable helipad has been designed to comply with Cap 437. It is currently rated for a Eurocopter AS350 B3 with a MTOW of 2500kg or equivalent.

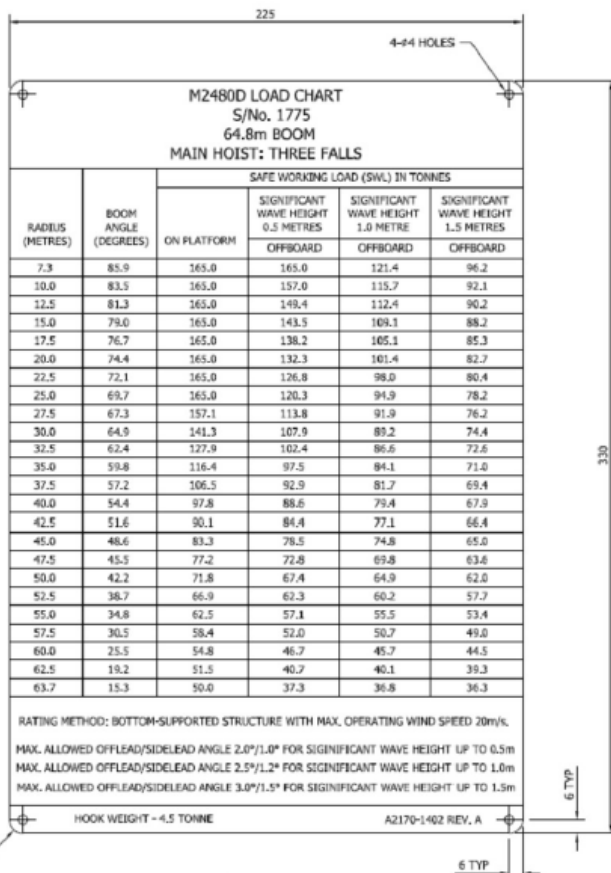
The helipad is upgradeable to suit a Eurocopter EC145 with a MTOW of 3585kg.

Foundational equipment

A wide range of piling and drilling equipment can be made available for the installation of piles. The Santa Fe comes equipped with 2 hydraulic pile gates, suitable for use with piles up to 1500mm diameter.

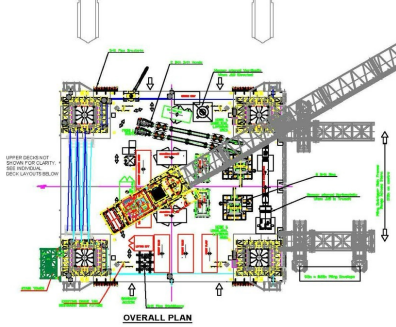
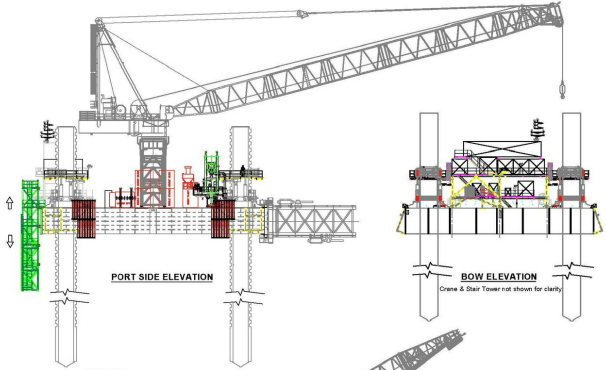
The following equipment has been used previously:

- **Impact hammers up to 500 kNm**
- **Vibra**
- **Drill rigs up to 20 tonmeter**



DETAIL ITEM 1
REFER DXF A2170-1402-001A

Date	Description	ECN Number	Rev
TOLERANCES			
Machined Dimensions: Tolerances required UNO.			
≤30 ±0.2	>30 - ≤100 ±0.3	>100 - ≤300 ±0.5	>300 - ≤1000 ±0.8
Structural Components: Tolerances required UNO.			
≤1000 ±1	>1000 - ≤2000 ±2	>2000 - ≤3000 ±3	>3000 - ≤6000 ±4
>6000 - ≤9000 ±5			
<small>THE DRAWING IS THE PROPERTY OF FAVELLE FAVCO PTY LTD. UNLESS OTHERWISE STATED. IT IS NOT TO BE REPRODUCED OR TRANSMITTED IN ANY FORM OR BY ANY MEANS, ELECTRONIC OR MECHANICAL, WITHOUT THE WRITTEN PERMISSION OF FAVELLE FAVCO PTY LTD.</small>			
 FAVELLE FAVCO CRANES PTY. LTD, Australia <small>A.S.M. 20 867 582 449 A subsidiary of FAVELLE FAVCO BERHAD A member of MHP-BOSSAH ENGINEERING BHD</small>			
M2480D LOAD CHART - 64.8m BOOM - THREE FALLS			
Drawn DPR	Draft Checked JQP	Eng Checked JQP	Approved JPD
Scale 1:1.5		Sheet: 1 OF 1	
 Wt/ft -	First Used On S/No. 1775	Drawing Number A2170-1402	



PRINCIPAL PARTICULARS

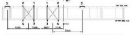
DEPTH (M)	35.50 M
LENGTH (M)	35.50 M
BREADTH (M)	30.50 M
DEPTH (M)	4.15 M
MAX HEIGHT	31.1 M
MAX PULL CAP	1330T (INCL. DOWNS)
CONSUMABLES	12 MONTHS
GT	1189
NET	328

KEY EQUIPMENT MOVEMENTS

1. CRANE SLIPPER CRANE SLIPPER COUPLERS AND RECEPTORS TO HOLD CRIPPER PINS ARE REQUIRED.
2. OUTRIGGERS MOVE ACROSS DECK.
3. WAREHOUSE STORAGE LOCATION REFERENCE ON JOB HOOD. WAREHOUSE ACCESS AND STORAGE FOR REMAINS NOT ON TO TOWERS OF JIB.
4. MAIN CRANE SPINER IS AVAILABLE RECALL. HOIST WOULD TO PALE & PULLER ALLOWING SOME OF THE PALE OPERATIONS ON ONE OF THE TOWERS OF JIB.
5. CONCRETE BLOCK MOVES OVER OFFSHORE LAG REQUIRED BY CONCRETE OPERATIONS CONTINUED.
6. STAIR TOWER CAN BE SHAVED OR LINGERED AS REQUIRED.

LIMITING CONDITIONS

1. WAREHOUSE DECK LOAD TO BE LESS THAN 170KG LOADS EXCEPT TO BE LESS THAN 170KG UNLESS SPECIFICALLY ENGINEERED.
2. WAREHOUSE DECK LOADS OVERALL AREA NOT TO EXCEED THOSE SET IN TABLE BELOW.



Deck Area	Support	To	From	Pa	Pa
P10A	1	200	0	0	0
	2	100	100	0	0
	3	0	200	0	0
	4	0	0	0	0
S10A	1	200	0	0	0
	2	100	100	0	0
	3	0	200	0	0
	4	0	0	0	0

3. MAXIMUM OPERATING WIND SPEED TO BE 15M/S.
4. MAXIMUM OPERATING WAVE HEIGHT TO BE 1.5M.
5. MAXIMUM OPERATING WAVE VELOCITY 20M/S.

