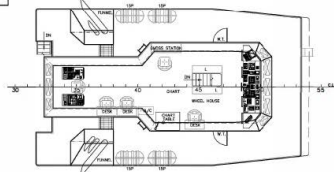


2008 | 40 M | 1/2 FIFI | Utility Support Vessel

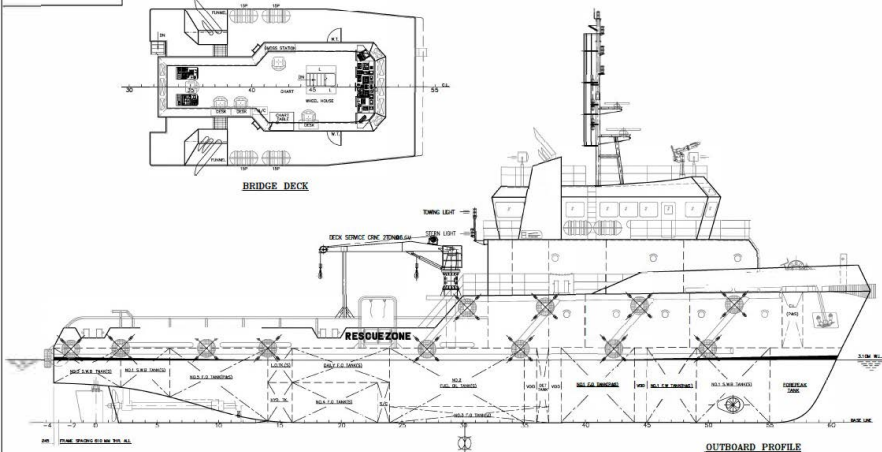


Vessel Specifications

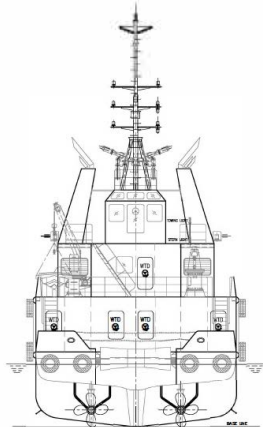
General Flag:	TBD	Cargo System	
Port of Registry:	TBD	F.O. Cargo Pump:	1 x 50 m ³ /hr@50m Head
		F.W. Cargo Pump:	1 x 50 m ³ /hr@50m Head
		Deck Cargo Capacity:	100 tons (Approx)
Next drydock:	12/18/27		
		Navigation/Electronics	
Length OA:	40.62m	Radar:	1 x JRC / FURUNO
Breadth Moulded:	10.00 m	Echo Sounder:	1 x JRC / FURUNO
Depth Moulded:	3.70 m	AIS:	1 x JRC / FURUNO
Max Draft:	3.10 m	GPS:	1 x JRC / FURUNO
Gross	493 tons	Auto Pilot:	1 x SAURA
NRT	144 tons	Speed Log:	1 x YOKOGAWA / JAPAN
Tonnage:	400 tons (Approx)	Compass:	1 x SAURA MR-150A Magnetic Compass
Deadweight:	Bureau Veritas		
Classification:	30 men		
LSA:		Inmarsat C:	1 x JRC / FURUNO (Exempted)
		VHF:	2 x Portable VHF
Machinery	Total 1700 BHP	Navtex:	1 x JRC / FURUNO
Main Engines:	(2 units CAT 3412D)	EPIRB:	1 x MCMUDRO
	3 x 215 KW / 415 V/ 50 HZ	SART:	1 x MCMUDRO
Main Generator:	(Caterpillar Diesel)	GMDSS:	A1 + A2 + A3 1
	2 Fixed pitch propellers	PA System:	SHIPSET
Propeller:	2.5 tons Ele Motor driven tunnel FPP		
Bow Thruster:		Speed	
		Cruising Speed:	10 knots
Tugger Winch:	2 x 5 tons SWL	Emergency Response & Fire-fighting Capabilities (half FiFi Class)	
Capstan:	Ele-Hyd, 1 x 5 tons @ 10m/min	External Fire Fighting:	1 x seawater pup with about 1200m ³ /hr at 10 bar complete with 2 fire monitors each 600m ³ /hr capacity.
Deck Crane:	2 ton x 6.5m service crane	Emergency Fire Pump:	1 x portable, hand-start, air cooled diesel Driving water pump approx.. 25m ³ /hr
Anchor Windlass:	1 x 2.5 tons @ 10m/min		
Tank Capacities			
Deck Area:	100 m ²	LSA / Accommodation	
Deck Strength:	5.0 MT / m ³	Liferafts:	4 x 15-man inflatable liferafts
Fuel (incl. bunkers):	200 m ³	Lifejackets:	Forty-eight (48) approved type lifejackets
Fresh water:	100 m ³	2 x 1-Berth Cabins:	2 men
Ballast Tank:	80 m ³	1 x 2-Berth Cabin:	2 men
Oil Dispersant:	2.0 m ³	5 x 4-Berth Cabins:	20 men
Foam:	3.0 m ³	1 x 6-Berth Cabin:	6 men
Lube Oil:	4.5 m ³	Total:	30 men
Hydraulic Oil:	2.0 m ³		
Dirty Oil:	2.0 m ³		



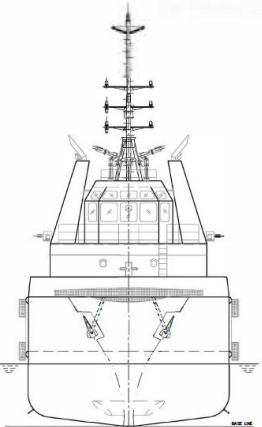
BRIDGE DECK



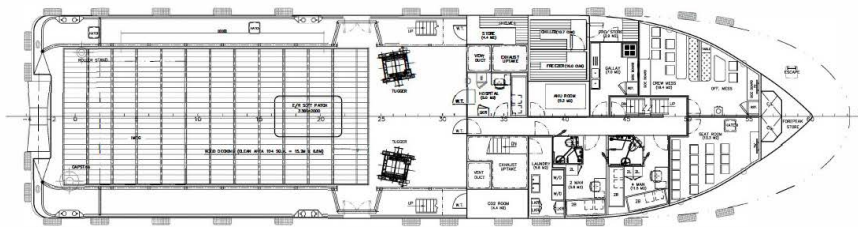
OUTBOARD PROFILE



STERN VIEW



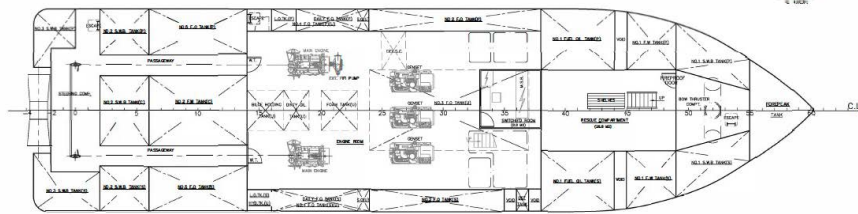
FRONT VIEW



MAIN DECK
 1 x 2 MAN CABIN = 2 MEN
 1 x 4 MEN CABIN = 4 MEN



FORECASTLE DECK
 2 x 1 MAN CABIN = 2 MEN
 4 x 4 MEN CABIN = 16 MEN



UNDER MAIN DECK

PRINCIPAL DIMENSIONS

LENGTH OVERALL	40.62 M
LENGTH BETWEEN PERPENDICULARS	36.80 M
BREADTH MOULDED	10.00 M
DEPTH MOULDED	3.70 M
DESIGN DRAFT	3.10 M
ACCOMMODATION	24 MEN
SEASING CAPACITY	18 PAX
FUEL OIL (APPR)	200 CUM
FRESH WATER (APPR)	85 CUM
BALLAST WATER (APPR)	95 CUM
WOOD BECK AREA (DECK LOADING - 3.5 T/M ²)	104 SQM
TOTAL POWER	246400HP/1800 RPM
SPEED (TRIALS, APPROX)	10.5 KNOTS

DATE	MODIFICATION	REV	BY
DESIGNER			
APPROVED	GUANGZHOU PANFUYU LINGSHAN SHIPYARD LTD. No. 1000, HAIYU ROAD, HAIYU DISTRICT, GUANGZHOU CITY, GUANGDONG PROVINCE, P.R.C.		
SHIP:			

TITLE: GENERAL ARRANGEMENT			
NUMBER	SCALE	YEAR	REV.
CLASS	B.V. I - HULL - MACH. TUG. SHIP'S TRACTOR	NAVIGATION	
DESIGNED	CHECKED	REVISIONS	SCALE
DATE	DATE	NO.	BY
11.00	LSH940-G-01		

THIS DRAWING AND THE INFORMATION HEREON ARE SUPPLIED ON THE UNDERSTANDING THAT THEY AND THE MATERIAL PROPERTY OR COPYRIGHT THEREIN ARE THE PROPERTY OF THE SHIPYARD AND SHALL BE USED OR REPRODUCED IN WHOLE OR IN PART WITHOUT PERMISSION BY WRITING.