



2017 | 40 M | Utility Support Vessel

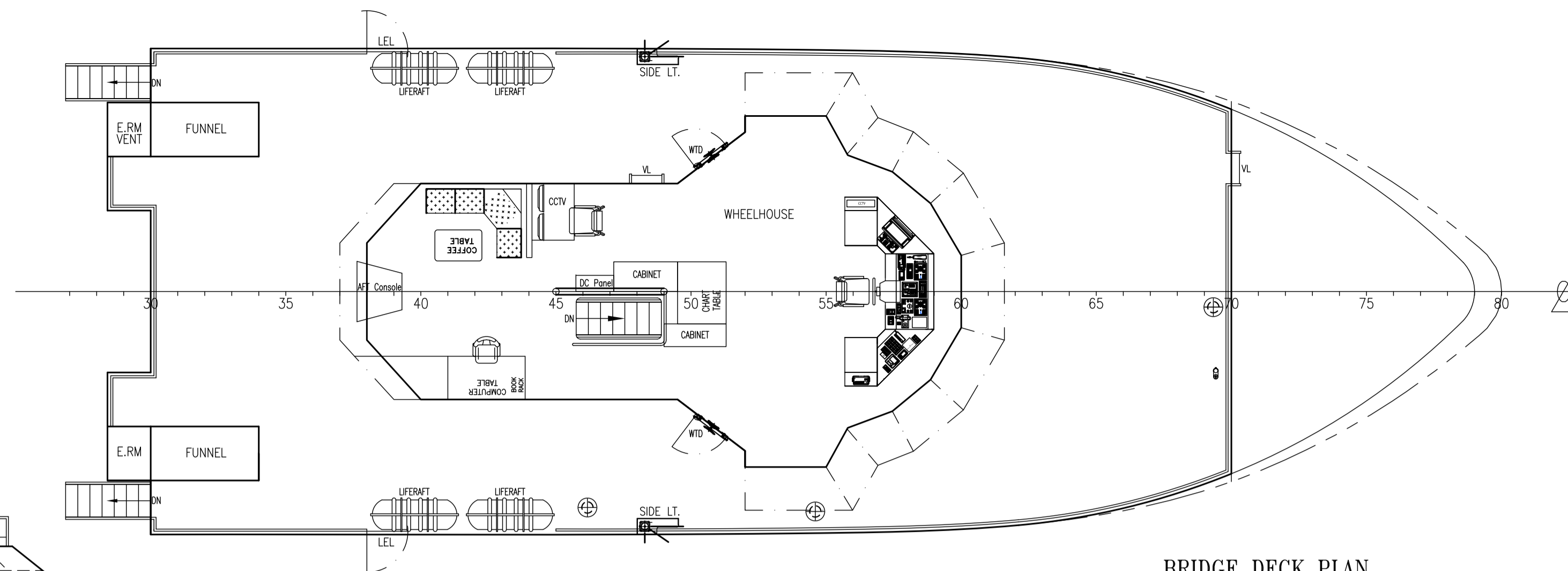
VESSEL'S SPECIFICATIONS

Vessel Type	: 40m Offshore Utility Vessel	Builder	: Natah Shipyard Sdn Bhd
Vessel Name	: TBD	Official No.	:
Port of Registry	: TBD	Flag	: TBD
Year of Built	: 2017	Call Sign	:
IMO	: TBD	Class	: BV
		Compliance	: MLC 2006, IMDG
Main Particular			
Length O.A.	: 40.000M	Capacities	
Length B.P.	: 37.223M	Fuel	: 100 m ³
Breath MLD	: 9.000M	Fresh Water	: 100 m ³
Depth MLD	: 3.900M	F.W. Ballast Tank	: 85 m ³
Designed Draft	: 2.700M	Cold Room	: Chiller – 4m ² Freezer – 4m ²
Gross Tonnage	: 414	Complement	: 18 crew + 12 Special Personnel
Net Tonnage	: 125	Cabin/berth	: 13 cabin / 30 berths
Clear Deck Area	: 90 m ²		
Design Deck Load	: 3.0 t/m ²		
Machinery			
Main Engine	: 2 x Yanmar 6AYM-WET 835hp @ 1450RPM	GMDSS A1+A2	
M.E. Gearbox	: 2 x Yanmar YXH240L Ratio – 4.89:1	LRIT	: 1 x JRC JUE-95LT
Propeller	: 2 x 4 Fixed Pitch Propellers Rotation - RH & LH	MF/HF	: 1 x JRC JSS-2150
Generator	: 2 x Cummins 6BT5.9-D(M) 80kW, 50Hz	VHF	: 1 x JRC JHS-770S 2 x Standard Horizon GX-1200
	1 x Cummins QSB7-D(M) 150kW, 50Hz	GPS EPIRB	: 1 x ACR Globalfix Pro 406
Bow Thruster	: 1 x Nakashima Electric Driven B/T, TFN-100s (2 tons)	GMDSS VHF	: 2 x Safesea V100
S.G System	: Kings Electro-Hydraulic Steering System	Navtex	: 1 x JRC NCR-333
S.T.P.	: 1 x IL Seung ISS-25N	Navigation & Communication	
O.W.S	: 1 x Geogrim GRS-05EB	X-Band Radar	: 1 x JRC JMA 52 12-6 1 x JRC JMA 1034
Bilge Pump	: 1 x Azcue Pump, 35m ³ /h @ 40m	Echo Sounder	: 1 x JRC JFE-380
G.S. / Fire Pump	: 1 x Azcue Pump, 35m ³ /h @ 40m	Speed Log	: 1 x JRC JLN-205MK2
E. Fire Pump	: 1 x Azcue Pump, 80m ³ /h @ 80m	GPS Navigator	: 1 x JRC JLR-7600 1 x Furuno GP-32
Pressure Set	: 3 x Azcue Pump, 5m ³ /h @ 15m	Satellite Compass	: 1 x SIMRAD HS80A
		Autopilot	: 1 x TMQ AP-9
		AIS	: 1 x JRC JHS-183
		Wind Speed	: 1 x NasaMarine Clipper Wind
		BNWAS	: 1 x Navitron NT991BNWAS
		Public Addresser	: 1 x Phontech CIS 3000
Deck Equipment			
Anchor	: 2 x 660kg Stockless Anchor	Life Saving Apparatus	
Anchor Windlass	: 2 x HY RAW C24 4T	Life Jacket	: 32 pieces c/w whistle
Deck Crane	: 1 x Unic Crane UBV505J	Life Buoys	: 2 pieces with no attachment 2 pieces with 30m lifeline 2 pieces with self-igniting light 2 pieces with self-igniting light and smoke signal
Rescue Boat	: 1 x SV420, 6 persons inflatable craft, SOLAS approved	Liferaft	: 4 x 15 men inflatable liferaft
		Transponder	: 1 x Safesea SART S1000
Performance			
Trade limit	: tropical zone (between the latitude of 30° N and 30°S)	Fire Fighting Apparatus	
Cruising Speed	: 10 Knots	CO ₂ System	: 1 system with 5 cylinders
Endurance	: 28 days	Fire Alarm Panel	: 1 unit

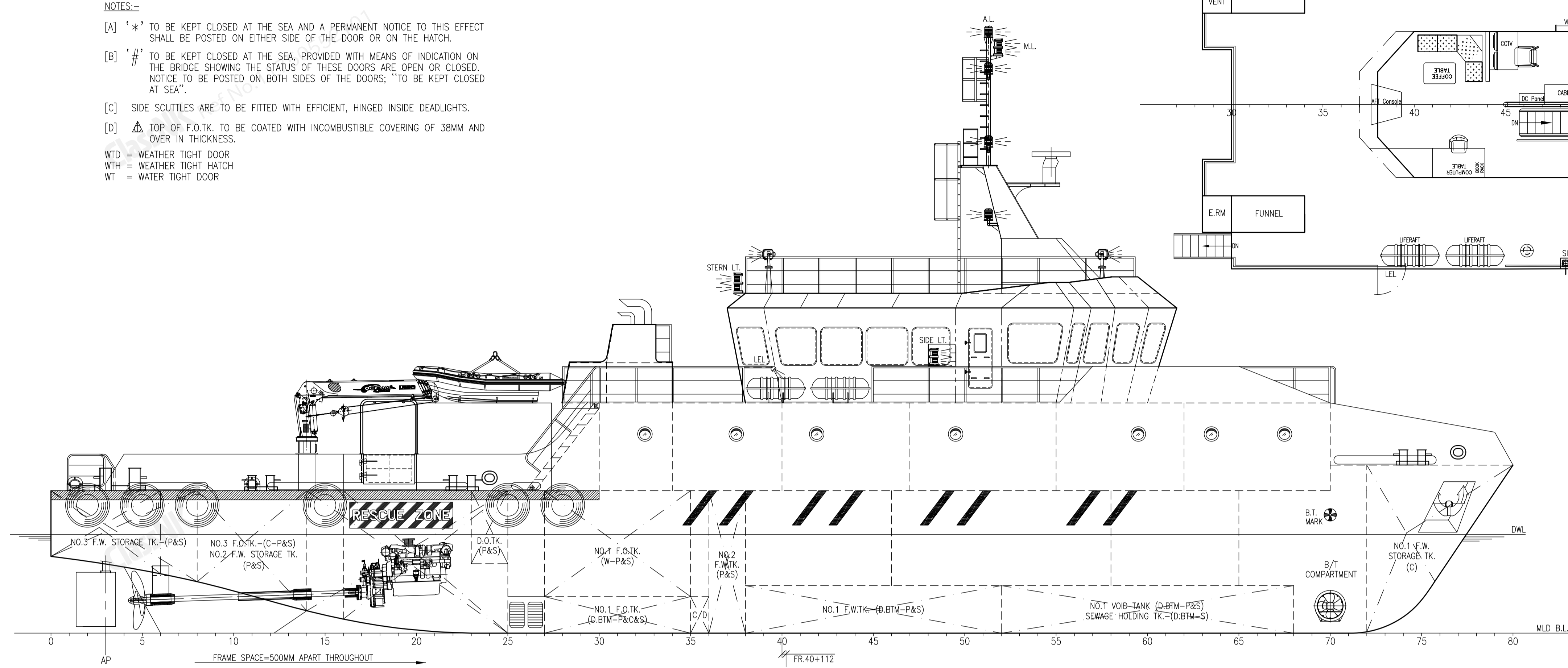
Next Dry Dock: 25.05.2027

NOTES:-

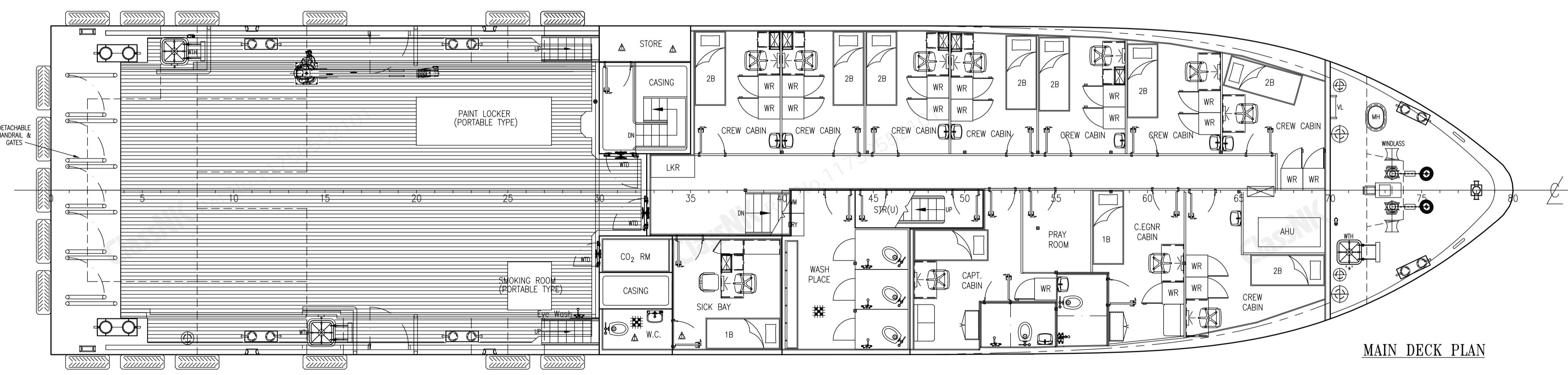
- [A] '* ' TO BE KEPT CLOSED AT THE SEA AND A PERMANENT NOTICE TO THIS EFFECT SHALL BE POSTED ON EITHER SIDE OF THE DOOR OR ON THE HATCH.
 - [B] '# ' TO BE KEPT CLOSED AT THE SEA, PROVIDED WITH MEANS OF INDICATION ON THE BRIDGE SHOWING THE STATUS OF THESE DOORS ARE OPEN OR CLOSED. NOTICE TO BE POSTED ON BOTH SIDES OF THE DOORS; "TO BE KEPT CLOSED AT SEA".
 - [C] SIDE SCUTTLES ARE TO BE FITTED WITH EFFICIENT, HINGED INSIDE DEADLIGHTS.
 - [D] Δ TOP OF F.O.TK. TO BE COATED WITH INCOMBUSTIBLE COVERING OF 38MM AND OVER IN THICKNESS.
- WTD = WEATHER TIGHT DOOR
 WTH = WEATHER TIGHT HATCH
 WT = WATER TIGHT DOOR



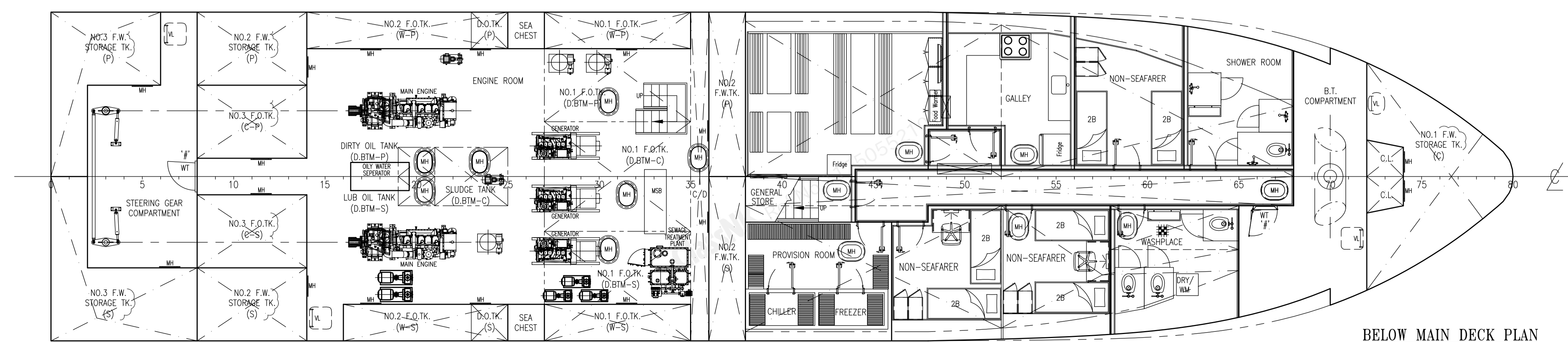
BRIDGE DECK PLAN



PROFILE



MAIN DECK PLAN



BELOW MAIN DECK PLAN

PRINCIPAL PARTICULAR:

L.O.A.	40.000M
L.B.P.	37.223M
BREADTH (MLD)	9.000M
DEPTH (MLD)	3.900M
DESIGN DRAFT (MLD)	2.700M
	(SUBJECT TO FREEBOARD ASSIGNMENT)
DESIGN SPEED	12 KNOTS
COMPLEMENT	18 MEN
SPECIAL PERSONNEL	12 MEN
MAIN ENGINE	YANMAR 6AYM-WET 829PS@1900RPM x 2 UNITS
GEAR BOX	RATIO 4.89 : 1
GENERATOR	80KW x 2 UNITS 150KW x 1 UNIT
F.O.TK. CAPACITY	126 CU.M
F.W.TK. CAPACITY	85 CU.M
F.W. STORAGE TK. CAPACITY	48 CU.M
PORT OF REGISTRY	KUCHING
FLAG	MALAYSIA
NAVIGATION AREA	INTERNATIONAL
CLASS NOTATION	OFFSHORE UTILITY SUPPORT VESSEL

Regional Manager, South Asia and Oceania