

2011 | Pipe-layer Barge | For Sale



CLASSIFICATION

GENERAL PARTICULAR

Vessel Name	: TBD
Owner	: TBD
Type	: Pipelay Barge for Shallow & Medium Water
Built	: 2011
Delivery	: 2012
Flag	: Malaysia
Port of Register	: Port Kelang
Classification	: RINA
Notation	: A1 Accommodation Barge & CRC
Safety Standard	: ISM Certified

MAIN DIMENSION

Length Overall	: 137.25 m
Breadth Moulded	: 37.82 m
Depth Moulded	: 9.00 m
Maximum Draft	: 4.50 m
Minimum Draft	: 2.80 m
GRT/NRT	: 19760/5928

DISPLACEMENT

Full Load	: 21947 MT
Light Ship	: 11580 MT
Deadweight	: 10367 MT

DECK AREA AND LOADING

Clear Deck Area	: 1500 m ²
Deck Loading	: 12.5 MT/m ²

ACCOMMODATION

Single Cabin with Toilet x 10	: 10 men
Twin Sharing Cabin Single Toilet x 31	: 62 men
Twin Sharing Cabin Share Toilet x 104	: 208 men
Quadruplet Sharing Cabin Share Toilet x 4	: 16 men
Office	: Barge Master office (1) : Client office (3) : Contractor's Office (8)

Other Facilities

• Galley (1)	• Gymnasium (1)
• Mess Hall (1)	• Conference Room (1)
• Cinema Room (1)	• Laundry Room (1)
• Recreation Room (1)	• Coffee Shop (1)
• Internet Room (2)	• Hospital and Sick Bay (1)
• Phone Booth (1)	

SEWAGE TREATMENT PLANT

Provision for 325 Personnel

CRANE

Main Crane	: PC300 Favelle Favco
Main Hoist	: 280T rad 18.0 M at 75 Deg.
Auxiliary Hoist	: 32T @ All Radius
Crawler Crane	: Optional

HELICOPTER DECK

ABS Approved UK CAA CAP 437
Approved for "Sikorsky S92"

PIPELAY SYSTEM

Pipelay Capacity	: Max 60 inch Coated Pipe
Tensioner Machine	: 2 x 70 MT
A&R Winch	: 1 x 182 MT
Work Station	: 4 x Beveling System : 3 x Line-up Station : 7 x Automatic Welding Station : 3 x NDT & Repair Station : 2 x Field Joint Coating Station
Side Davits	: 4 x 50 MT
Stinger	: Rigid Type
1st Section Length	: 42 m
2nd Section Length	: 19 m
Welding Machines	: 2 x 500 amp Miller Big Blue Eco Pro 5 : 13 x 500 amp Lincoln Welding Station

MOORING AND TOW SYSTEM

Winches	: 8 x Hydraulic Mooring Winches
Line pull	: 125 MT@13m/min at 1st Speed : @1st Layer
Wire Size	: 52 mm Dia.
Wire Length	: 1500 m
Anchor Type/Weight	: 8 x 10MT - Delta Flipper Anchors

STORM ANCHOR

Wire Size	: 62 mm Dia.
Wire Length	: 500 m
Brake Holding	: 200 MT@ 2nd Layer
Anchor Type	: 1 x 5 MT - Delta Flipper Anchors
Pull Capacity	: 300kN x 9m/min

AUXILIARY EQUIPMENT

GENERATOR	
Main	: 3 x 1500kW
Deck	: 1 x 1200kW
Emergency	: 1 x 500kW
Air Compressor	: 2 x 875Cfm @ 10 Bar
Air Receiver	: 2 x 3000 Litres @ 10 Bar
Water Maker/RO	: 2 x MT/Day
Oily Water Saperator	: 1 m ³ /HRS @ 15PPM

TANKS CAPACITY

Fuel Oil	: 4797.57 m ³
Ballast Water	: 7248.4 m ³
Portable Water	: 1965.43 m ³
Fresh Water	: 4744.1 m ³
Lube Oil	: 57.43 m ³
Hydraulic Oil	: 57.44 m ³

FIRE FIGHTING EQUIPMENT

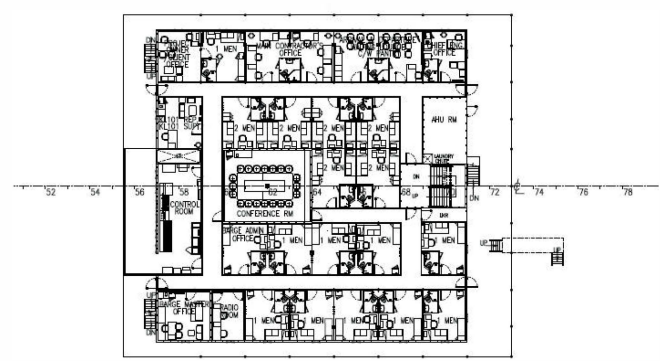
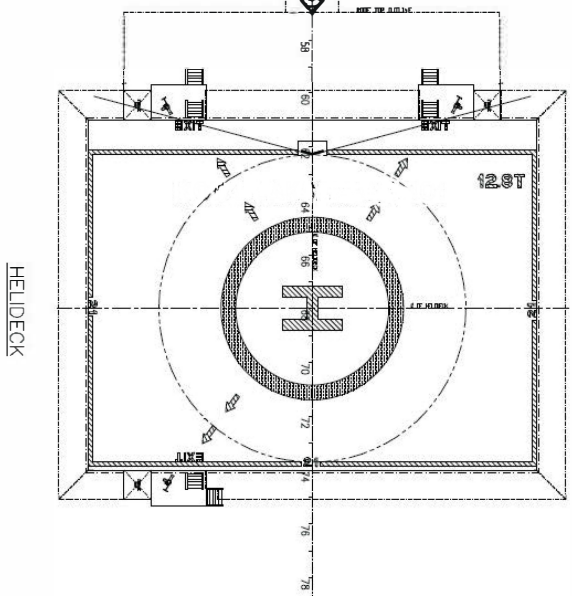
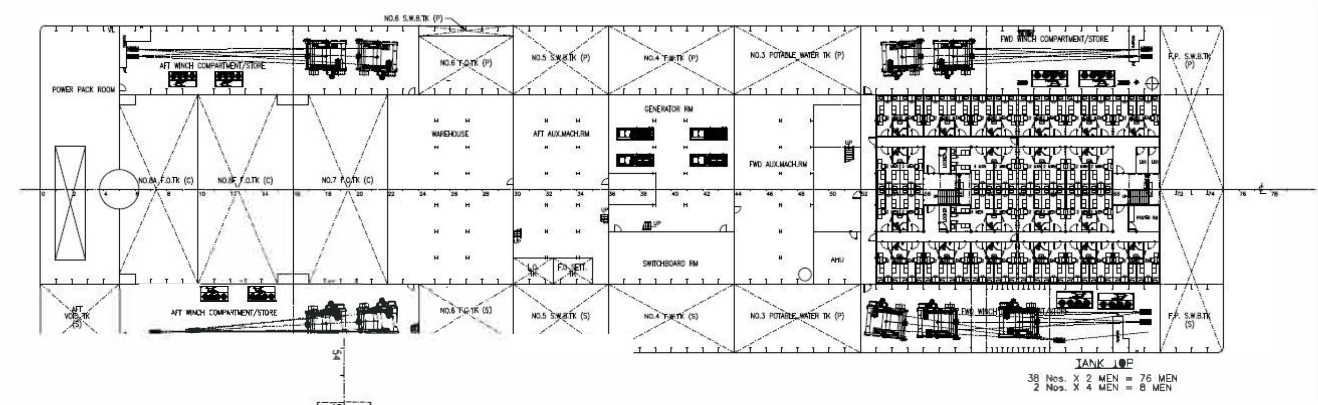
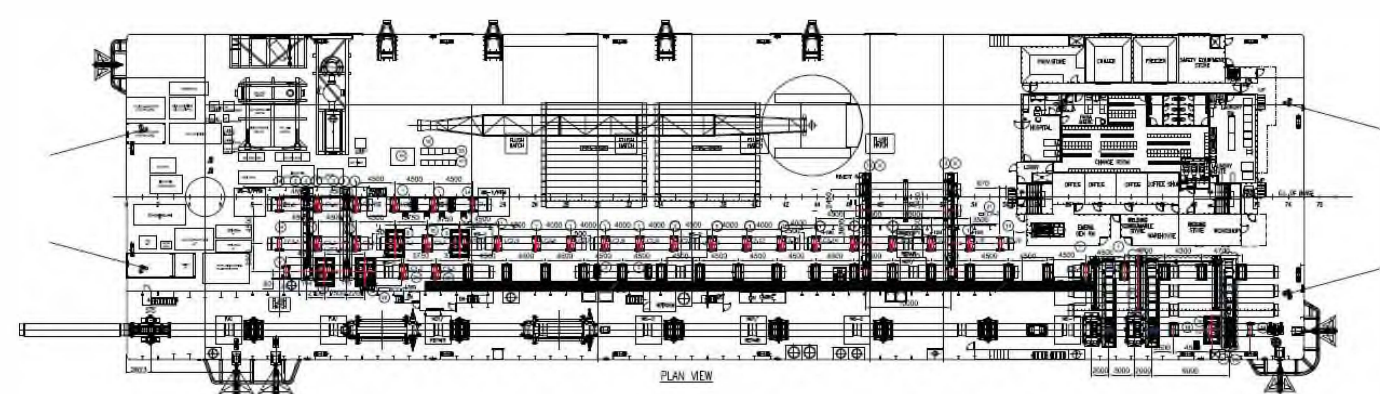
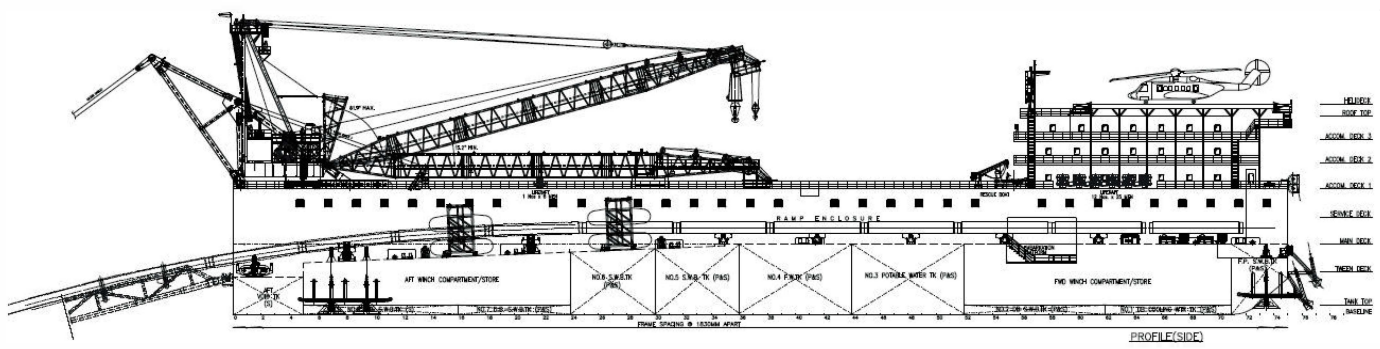
- Wet Chemical for Galley Hood
- FM-200 Switch Board Room
- Automatic Sprinkler System for Accommodation, Public Area, Working Area and Storage
- Water Mist System for Machinery Room
- Automatic Fire and Smoke Detection System
- Accommodation, Public Area, Working Area and Storage
- Fire Monitor System
- CO² at Winch Compartment

LIFE SAVING EQUIPMENT

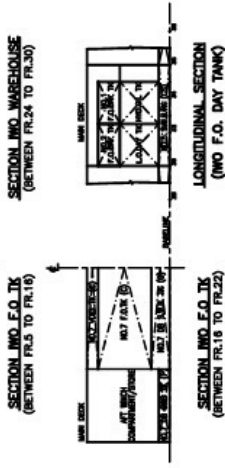
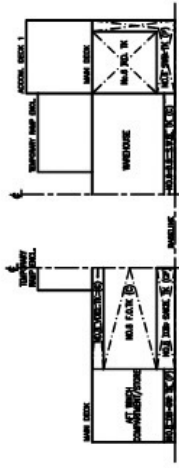
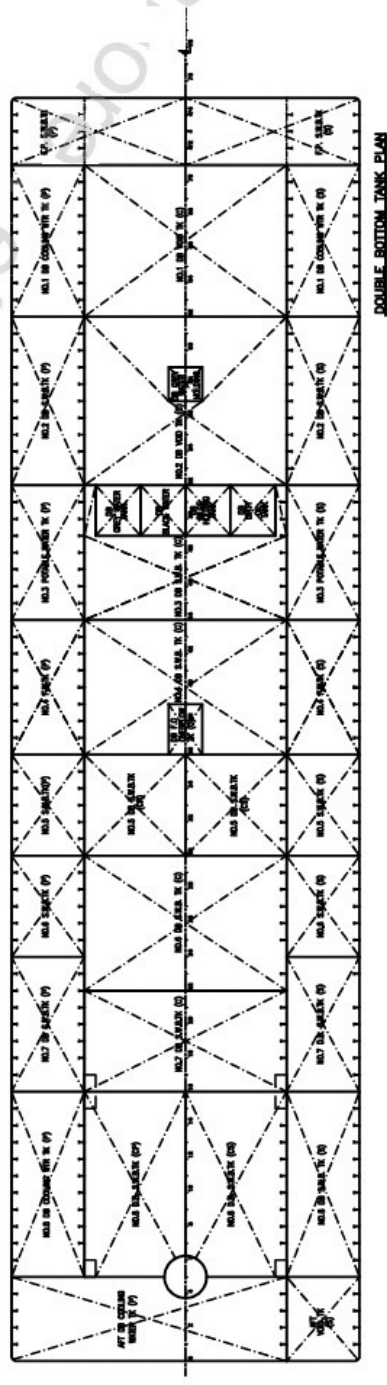
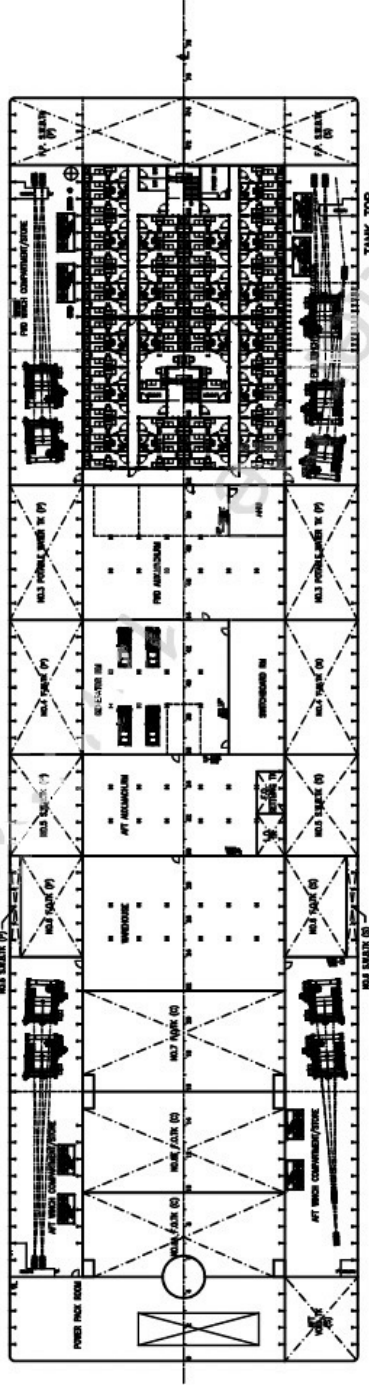
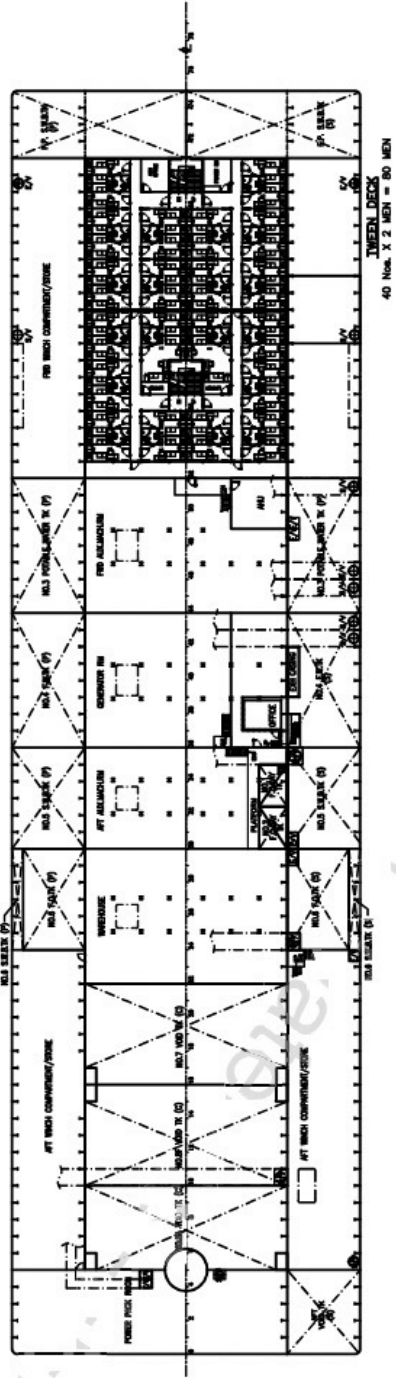
Rescue Boat	: 2 x 6 men SOLAS/USCG approved
Life Raft	: 26 x 25 men SOLAS/USCG approved
Life Jacket	: 650 units SOLAS approved
Life Buoy	: 12 units SOLAS/USCG approved

COMMUNICATION & NAVIGATION EQUIPMENTS

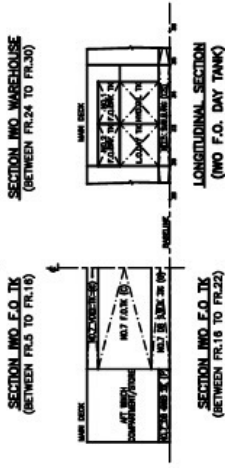
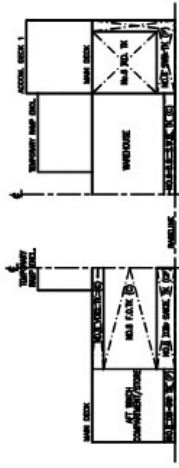
VSAT	: 1 x Seatel 9797-32C-Band
GMDSS	: KU-Band TX/RX Antennas
GMDSS VHF	: 1 x Furuno RC-1800F
VHF/FM	: 3 x Mcmurdo R2
VHF/AM	: 2 X Furuno FM-88005
VHF AM Portable	: 1 x ICOM 1C-A110
UHF VHF Portable	: 1 x ICOM 1C-A6
Navtex Receiver	: 2 X Furuno GM-300
SART	: 1 X Furuno NX-700A
EPRIB	: 2 x Mcmurdo S4
UAIS	: 1 x Mcmurdo ES SMARTFIND
SSAS	: 1 x Furuno fa-150
Marine Radar	: 1 x Furuno felcom-15
X-Band	: 1 x Furuno far-2827
Echo Sounder	: 1 x Skipper GDS 102
GPS	: 1 x Furuno GP 150
Gyro Compass	: 1 x Raytheon Anschute 110-233
Magnetic Compass	: 1 x Cassens & Plaith Reflecta 17



ACCOMMODATION DECK 3
10 Nos. X 1 MAN = 10 MEN
6 Nos. X 2 MEN = 12 MEN



FILED FOR
REFERENCE ONLY

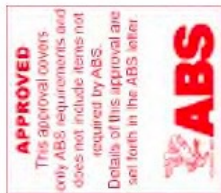


PC300 LOAD CHART (F.P.S.O.)
S/No. 1500
55.0m BOOM
MAIN HOIST - SIX FALLS

RADIUS (METRES)	BOOM ANGLE (DEGREES)	WORKING LOAD LIMIT (WLL) IN TONNES							
		SIGNIFICANT MAVE HEIGHTS		SIGNIFICANT MAVE HEIGHTS		SIGNIFICANT MAVE HEIGHT			
		0.6 METRES	1.0 METRE	1.5 METRES	1.5 METRES	2.1 METRES	2.1 METRES		
11.4	81.9	280.0	279.5	280.0	259.0	255.2	86.0	226.9	129.1
12.0	81.2	280.0	278.8	280.0	259.0	254.3	86.0	226.3	129.1
14.0	79.1	280.0	276.5	280.0	258.4	252.0	86.0	224.4	129.1
16.0	77.0	280.0	273.3	280.0	256.6	248.4	86.0	221.5	129.1
18.0	74.8	280.0	267.8	275.1	252.6	243.5	83.7	217.4	129.1
20.0	72.6	275.9	262.5	269.5	248.5	238.8	81.5	213.5	128.4
22.0	70.4	247.8	243.6	242.8	236.1	228.7	79.6	209.7	127.6
24.0	68.2	224.1	222.4	219.9	214.3	207.9	78.3	196.5	126.8
26.0	65.9	203.8	203.8	200.2	195.8	189.9	75.1	180.0	118.8
28.0	63.6	186.2	186.2	183.1	179.7	174.2	72.0	165.6	109.1
30.0	61.7	170.8	170.8	168.1	165.8	160.4	70.0	152.9	100.6
32.0	59.8	157.3	157.3	154.9	153.8	148.2	67.7	141.6	93.6
34.0	58.3	145.3	145.3	143.2	143.1	137.3	65.3	131.5	87.2
36.0	56.8	134.5	134.5	132.7	132.7	127.5	62.4	122.4	81.9
38.0	55.1	124.9	124.9	123.3	123.3	118.7	59.6	114.2	77.0
40.0	53.4	116.2	116.2	114.8	114.8	110.8	56.7	106.7	72.9
42.0	51.8	108.4	108.4	107.2	107.2	103.5	54.1	100.0	69.3
44.0	50.2	101.2	101.2	100.2	100.2	97.0	51.7	93.8	66.1
46.0	48.7	94.7	94.7	93.8	93.8	91.0	49.4	88.2	63.4
48.0	47.1	88.8	88.8	88.0	88.0	85.5	47.1	82.1	61.3
50.0	45.6	83.4	83.4	82.7	82.7	80.6	44.9	76.5	59.5
52.0	44.1	78.5	78.5	77.9	77.9	76.1	42.8	71.4	57.8
54.0	42.6	74.0	74.0	73.5	73.5	72.1	40.8	66.6	56.2
56.0	41.1	70.1	70.1	69.7	69.7	68.6	38.9	62.4	54.8
58.0	39.6	66.8	66.8	66.4	66.4	65.4	37.1	58.6	53.4
60.0	38.1	63.8	63.8	63.4	63.4	62.4	35.4	55.2	52.0

CRANE SPECIFICATIONS

MAX. LIFTING CAPACITY x WORKING RADIUS :	5040 T.m
MAX. LIFT ABOVE GROUND	77m (Approx.)
BASIC BOOM LENGTH	55.0 m
MAX. LENGTH OF BOOM WITH FLY JIB	57.5 m
FLY JIB LENGTH	2.55 m
BOOM HOISTING/LOWERING	3 m/min.
LOAD HOISTING/LOWERING	7.5 m/min.
JIB LOAD HOISTING/LOWERING	28.4 m/min.
MAIN HOIST	6 FALLS
FLY HOIST	2 FALLS
LUFF HOIST	12 FALLS
TOTAL OPERATING WEIGHT	267 TONNES
PEDESTAL ASSEMBLY (WEIGHT)	26 TONNES



NOTES

1. THIS CRANE IS INSTALLED ON A BARGE AND IS DESIGNED & BUILT IN ACCORDANCE WITH API 2C 6TH EDITION.
2. NO COUNTERWEIGHT FITTED TO CRANE.
3. RADIUS IN METRES.
4. RATED LOAD IS IN TONNES AND IS THE LOAD BELOW THE HOOK.
5. MAIN HOIST IS REEVED IN SIX FALLS
6. AUXILIARY HOIST IS REEVED IN TWO FALLS
7. ALL LOADS INDICATED IN [HATCHED AREA] DO NOT COMPLY WITH API-2C SPEED REQUIREMENTS.

WORKING RANGE

