



270' DP-2 WELL STIMULATION VESSEL

REGISTRATION

Vessel Type	WSV - Well Stimulation Vessel
Vessel Class	OSV - Offshore Supply Vessel

DIMENSIONS

Dimensions	270 ft. x 56 ft. x 18.75 ft. (82.3m x 17m x 5.7m)
Length Overall	270 ft.
Draft (Lightship)	6 ft. 6 in. (1.98m)
Draft (Loadline)	15 ft. 2 in. (4.62m)
Freeboard (Loadline)	3 ft. 7 in. (1.09m)
Freeboard (Lightship)	12 ft. 4 in. (3.76m)
Displacement (Lightship)	1,599 LT (1,624 MT)
Deadweight (Loadline Draft)	2,173 LT (2,207.77 MT)

CLASSIFICATION

ABS	Maltese Cross A1 (Hull)
ABS	Load Line
ABS	Maltese Cross AMS (Machinery)
USCG	Subchapter L (O.S.V.)
USCG	Minimally Manned Engine Room
SOLAS	'97
MARPOL	'92

CAPACITIES

Fuel Oil	170,278 gallons (644.57 m3)
Ballast/Rig Water	478,712 gallons (1,812.12 m3)
Potable Water	36,694 gallons (138.90 m3)
Dry Bulk	12,200 ft.3 (345.5 m3) @ 80 psig
Anti-Roll Tanks	45,280 gallons (171.40 m3)
Slop Tank (Stainless Steel)	36,015 gallons (136.33 m3)
Gel	279,804 gallons (1,059.17 m3)
Completion Fluid	36,015 gallons (136.33 m3)

SPECIAL FEATURES

Steering and Controls	Two (2) x Passive Type Anti-Roll Tanks
-----------------------	--

Bilge Keel

MACHINERY

Main Propulsion	Two (2) x 3516 Caterpillar Diesels • 3420 BHP @ 1600 rpm
-----------------	--

Azimuth Thrusters	Two (2) x 1350HRV Ulstein 315 rpm, 80 in. Dia., 4 Blade FPP
-------------------	---

Thrusters	One (1) x 1000 hp CP Tunnel (3508 CAT)
-----------	--

Thrusters	One (1) x 1200 hp Drop Down Azimuth (3512 CAT)
-----------	--

Speed	11.9 Kts
-------	----------

Emergency Generators	One (1) x 99 kw
----------------------	-----------------

Ship's Service Generators	Three (3) x 300 kw
---------------------------	--------------------

Well Stim Generator	Three (3) x 300 kw
---------------------	--------------------

LIFE SAVING EQUIPMENT

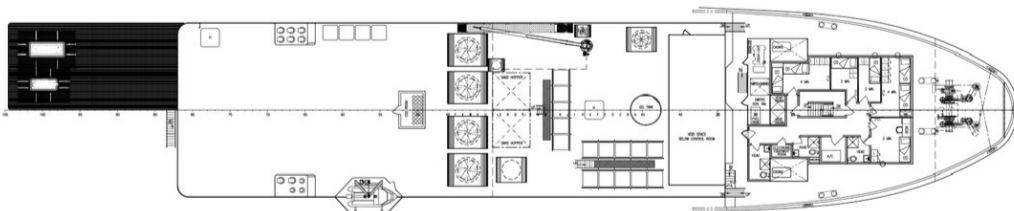
Life Rafts	Four (4) x 25 Man Inflatable Life Rafts
------------	---

Personnel Rescue Davit	One (1) x 5.8m Rescue Boat
------------------------	----------------------------

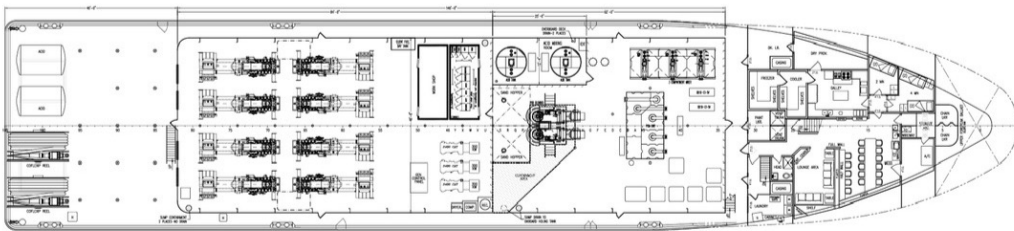
Other gear as required by authorities

ACCOMMODATIONS

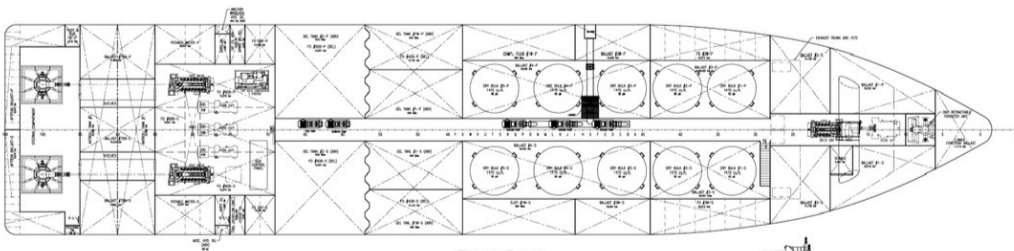
Accommodations	29
----------------	----



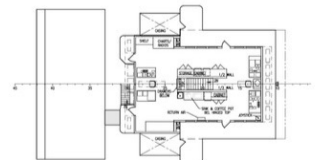
01 DECK PLAN
3/32=1'-0"



MAIN DECK PLAN
3/32=1'-0"



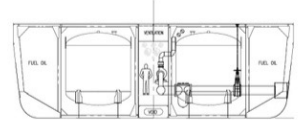
TANK PLAN
3/32=1'-0"



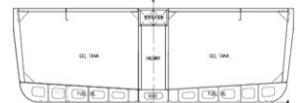
03 DECK PLAN
3/32=1'-0"



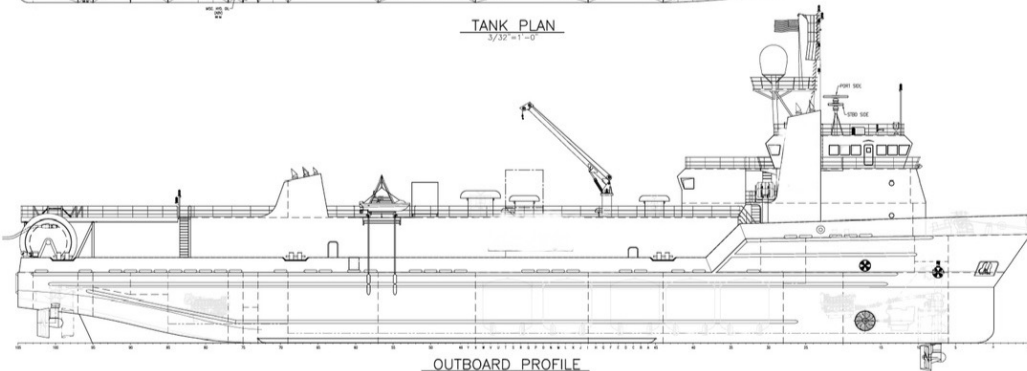
02 DECK PLAN
3/32=1'-0"



SECTION THRU DRY BULK TANKS
1/8=1'-0"



SECTION THRU GEL TANKS
1/8=1'-0"



OUTBOARD PROFILE
3/32=1'-0"

