

230ft Class DP2 Supply Vessel for P&C Sale



Main Particulars

Length	230 ft / 70.1m
Width	56 ft / 17m
Depth	18 ft
Tonnage GRT	1,706
Tonnage NRT	511

Capacities

Fuel Oil	151,925 USG - 134,618 USG/505,707M3 transferrable @ 90% capacity
Potable Water	239,652 USG - 73,500 USG transferable
Liquid Mud/Fuel Oil	7,300 BBLs (306,600 USG/1,195 m3)
Dry Bulk	6,740 ft ³
Ship Potable Water	30,000 USG
Lube Oil	3,000 USG

Accommodations

Berths	18
Passengers	11

Special Equipment

Fire Monitor	3,000 GPM
--------------	-----------

Cargo Deck

Length	160 ft (48m)
Width	49 ft (15m)
Clear Area	7,840 ft ² / 720 m ²
Capacity	1,000 LT
Dead Weight	2,825 LT

Documentation

Official Number:	
IMO	
Flag	United States
Year Built	2004
Call Sign	

Machinery

Main Engines	2 x Caterpillar 3516B
Main Generators	2 x Caterpillar 3306, 170 kW
Bow Thruster x 2	2 x Caterpillar 3512, 1200
Total Power	HP 6,000 HP
Stern Thruster / Steering	2 x Azimuth Shottel Z-Drives

Performance

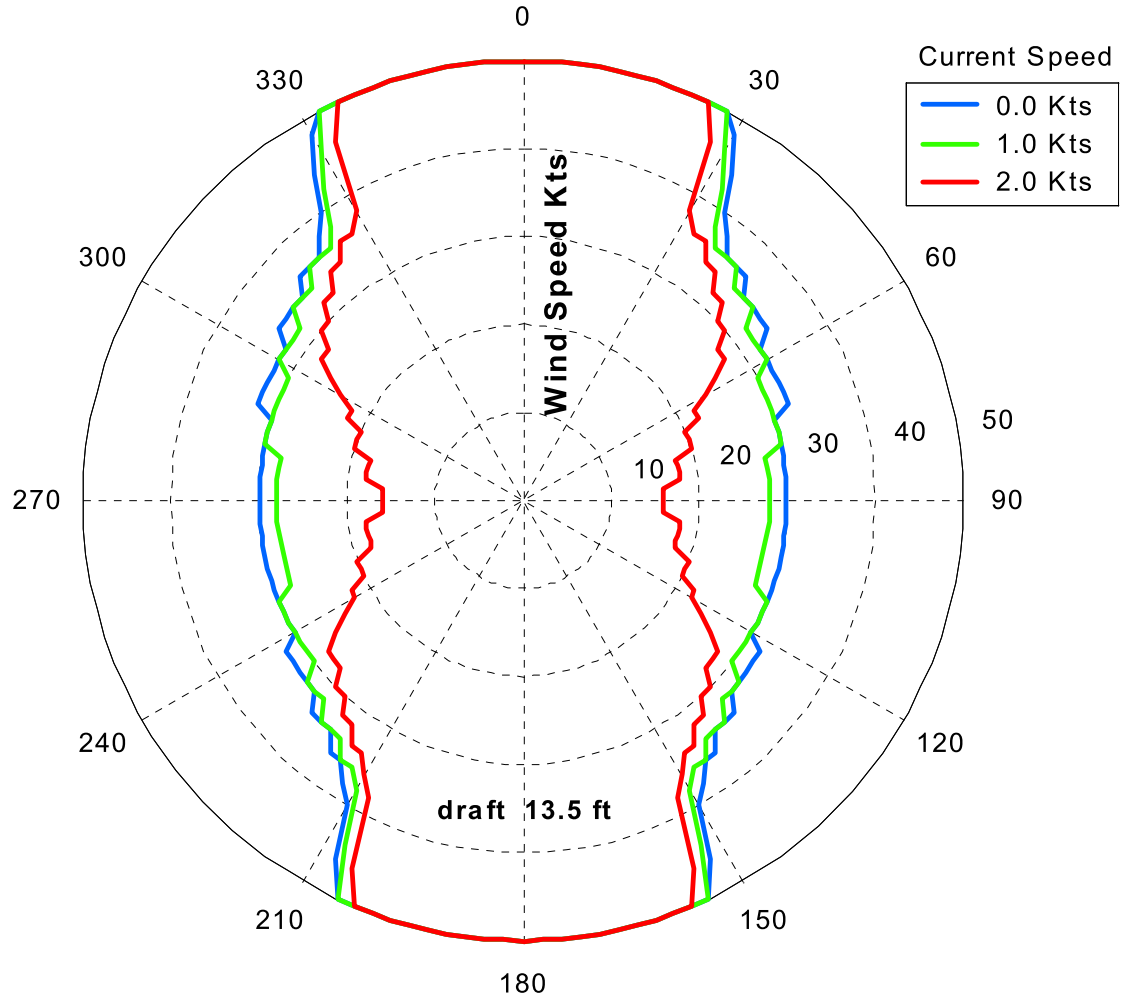
Speed	10/12 Knots
Fuel Consumption	150/233.1 USG/hr (120 USG/hr on DP)

Electronics & Controls

Dynamic Positioning DP System	DP SDP21 Class 2
2 X Radar #1 / GDMSS / Auto Pilot / VSAT	

5 Plot Results

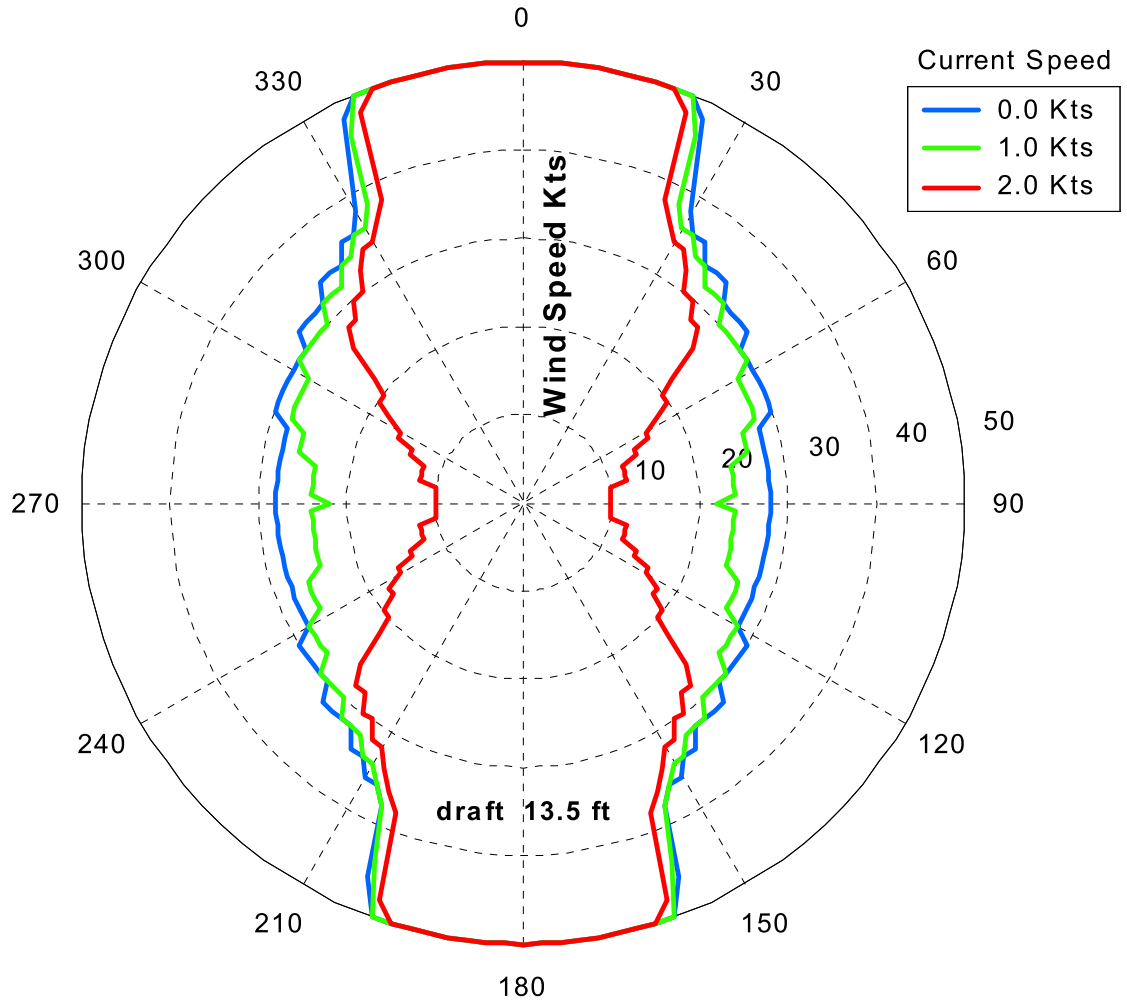
5.1 Capability Plot (all Thr 100%).



<u>Propulsors:</u>		<u>Environment:</u>	
#1 Bow thruster	100% thrust	Max wind speed :	50 Kts
#2 Bow thruster	100% thrust	Current Speed:	0-2.0 Kts
#2 SternPort AZ	100% thrust	Colinear environment	
#3 SternStbdAZ	100% thrust		

Figure 1

5.2 Capability Plot (all Thr 80%).



<u>Propulsors:</u>		<u>Environment:</u>	
#1 Bow thruster	80% thrust	Max wind speed :	50 Kts
#2 Stern Port AZ	80% thrust	Current Speed:	0-2.0 Kts
#3 Stern Stbd AZ	80% thrust		Colinear environment

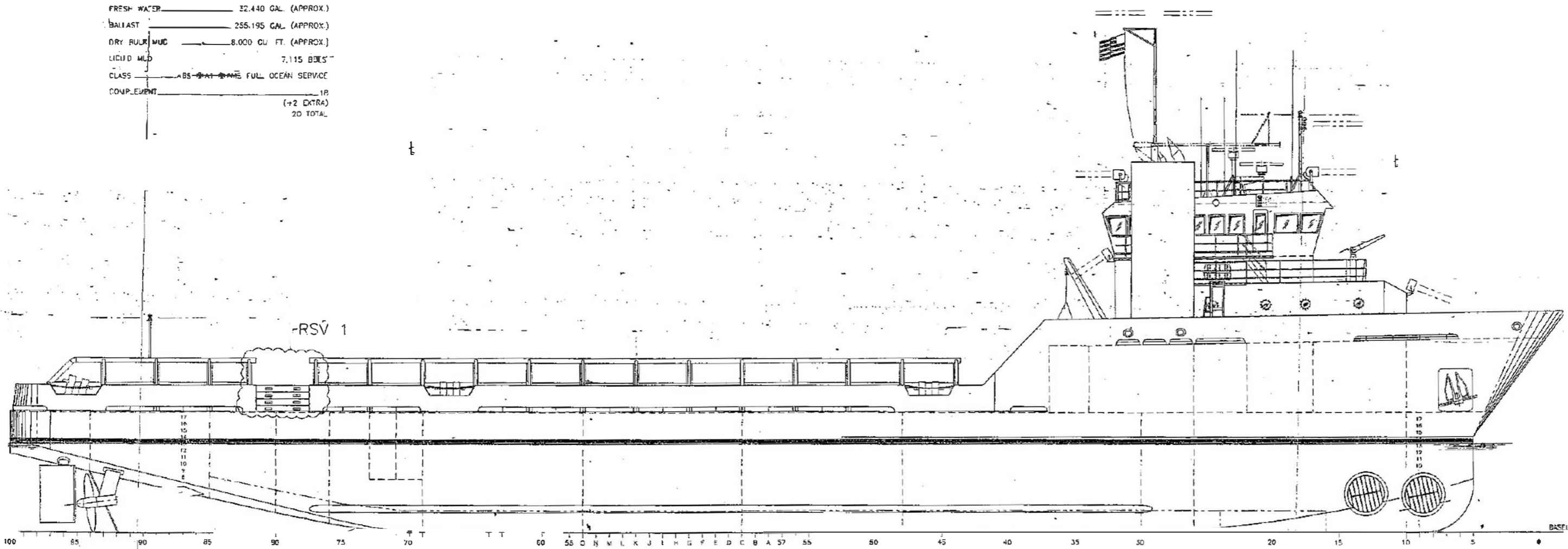
Figure 2

CHARACTERISTICS

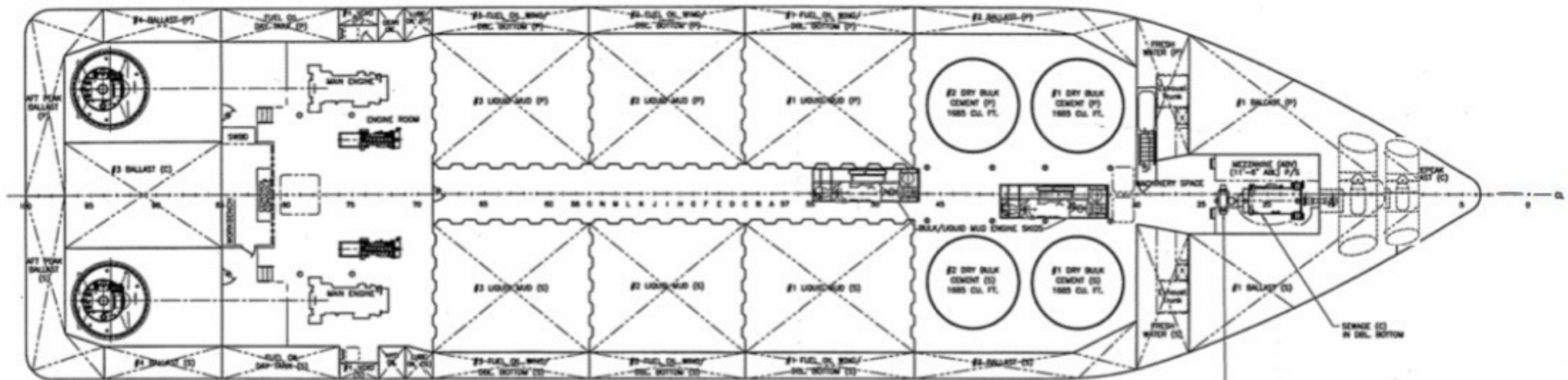
LENGTH O.A. (MLD)	230'-0"
LENGTH BETWEEN PERPENDICULARS	220'-0"
BEAM (MLD)	56'-0"
DEPTH (MLD)	18'-0"
FUEL OIL	182,749 GAL. (APPROX.)
FRESH WATER	32,440 GAL. (APPROX.)
BALLAST	255,195 GAL. (APPROX.)
DRY BULK MDC	8,000 CU. FT. (APPROX.)
LIQUID MLD	7,115 BBL'S
CLASS	ABS - SMALL FULL OCEAN SERVICE
COMPLEMENT	18 (+2 EXTRA) 20 TOTAL

RESERVATIONS

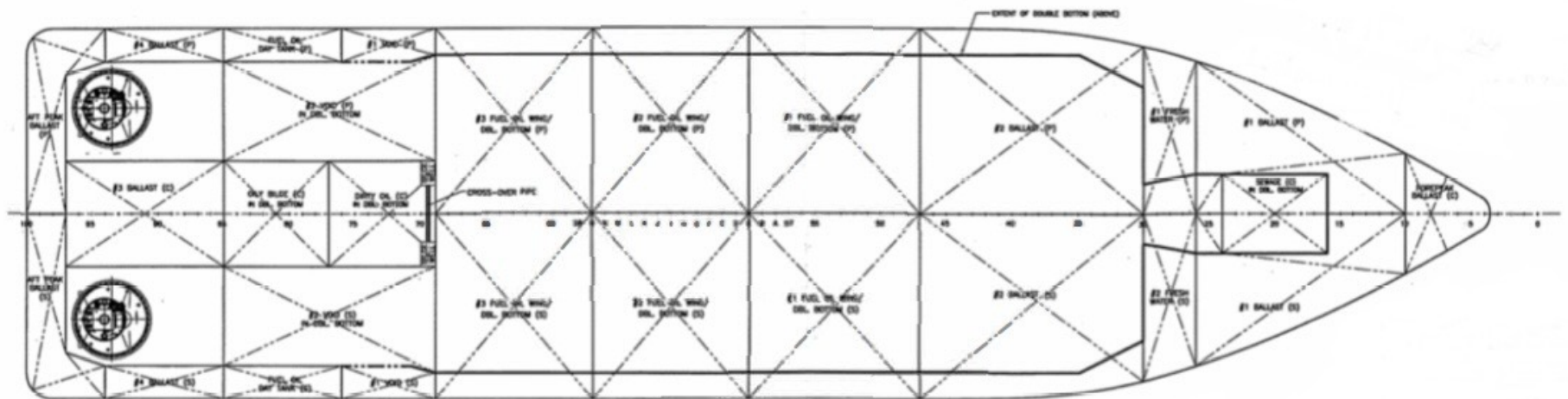
1. RESERVED PENDING OWNER LOCATION & APPROVAL.



OUTBOARD PROFILE



HOLD PLAN Δ^3 Δ^{AS}



INNERBOTTOM PLAN Δ^3 Δ^{AS}