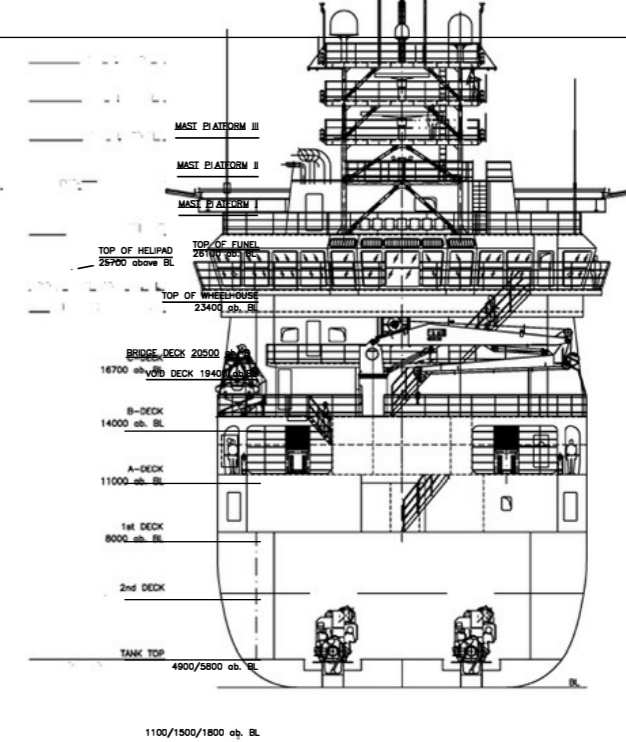
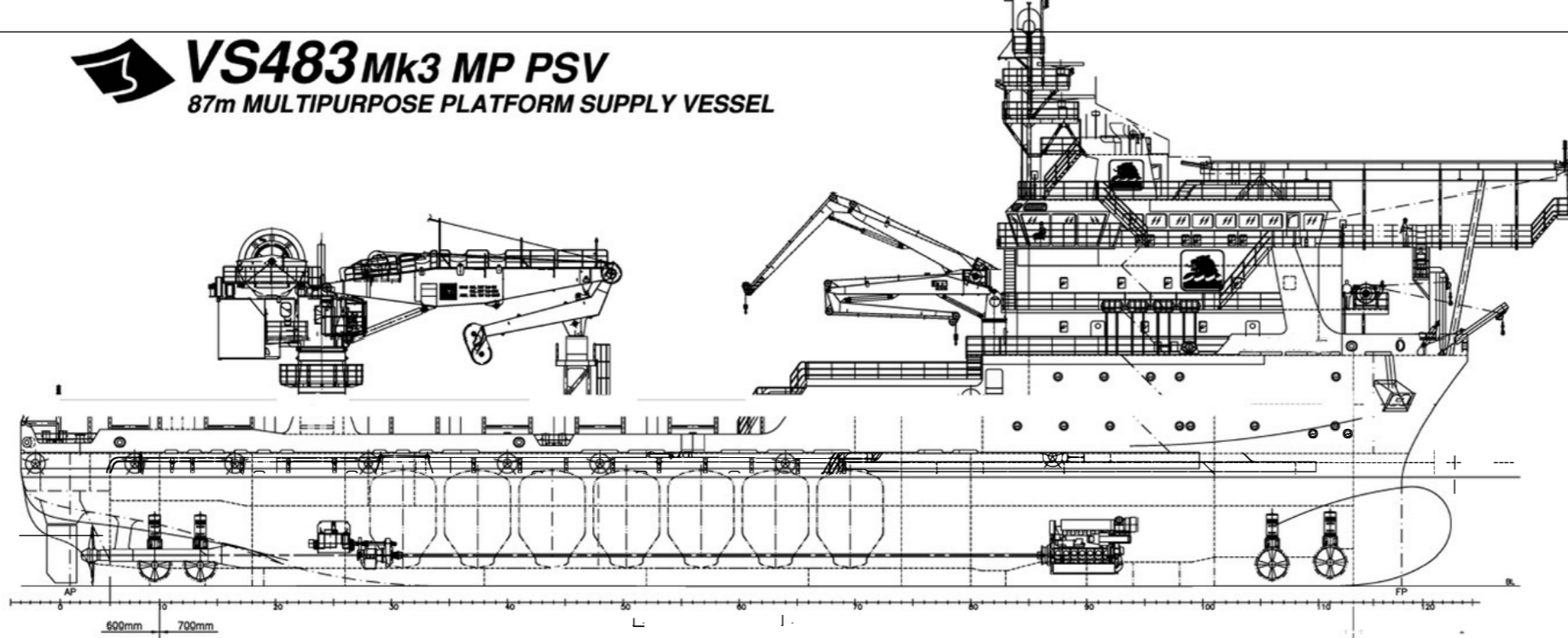
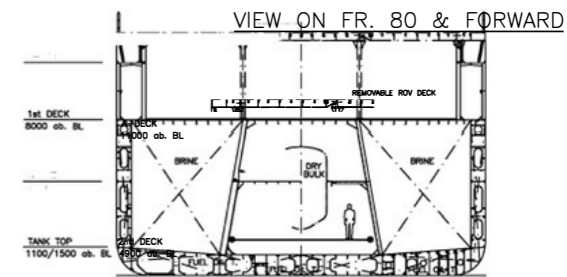


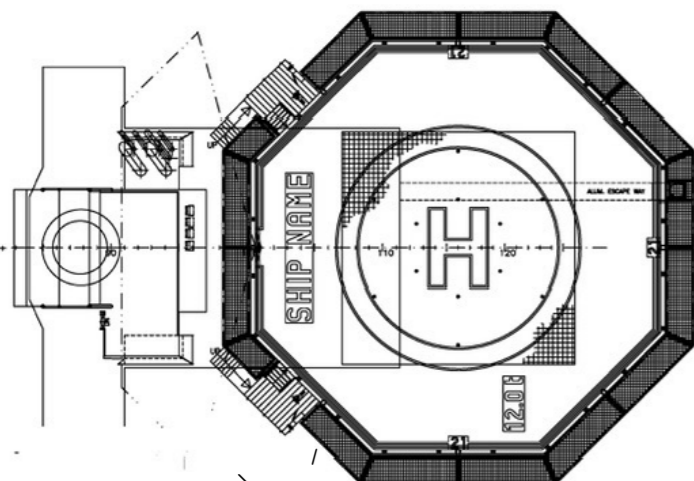
**VS483 Mk3 MP PSV**  
87m MULTIPURPOSE PLATFORM SUPPLY VESSEL



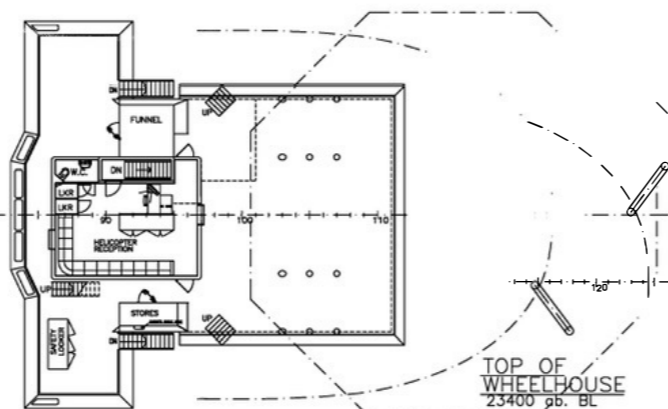
PROFILE



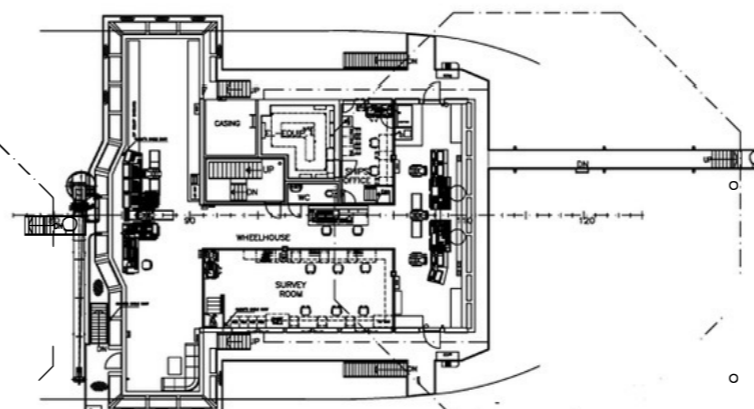
SECTION FR. 75 SECTION FR. 72  
SECTION IN WAY OF ROV DECK



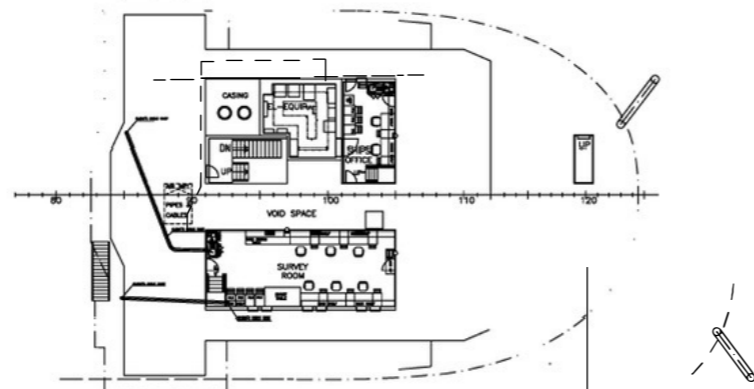
FUNNEL TOP/HELIDECK  
25900/25.700 ab. BL



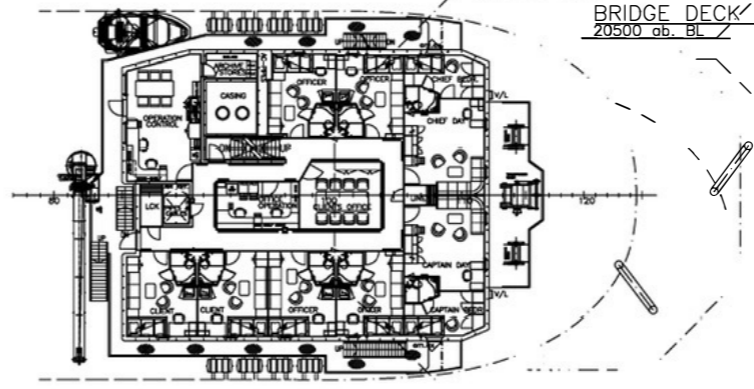
TOP OF WHEELHOUSE  
23400 ab. BL



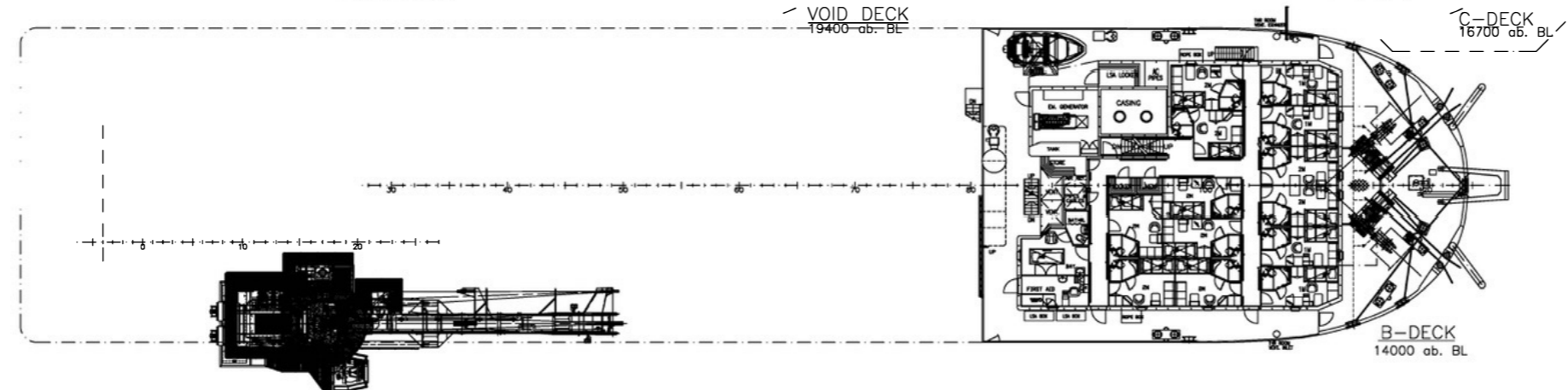
BRIDGE DECK  
20500 ab. BL



VOID DECK  
19400 ab. BL



C-DECK  
16700 ab. BL



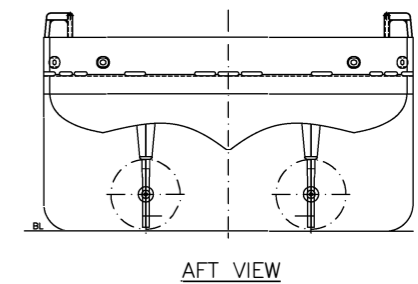
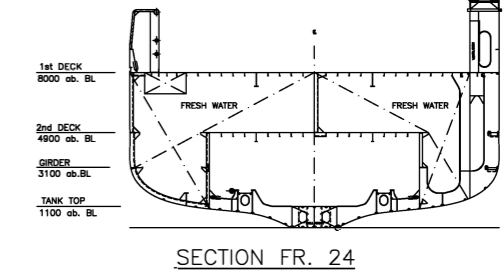
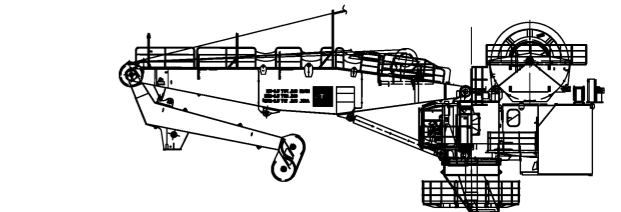
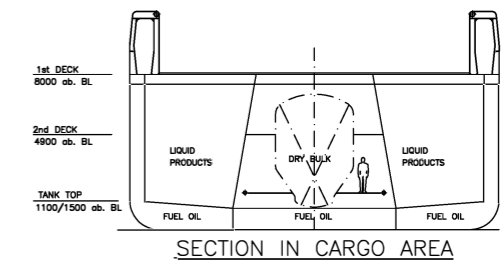
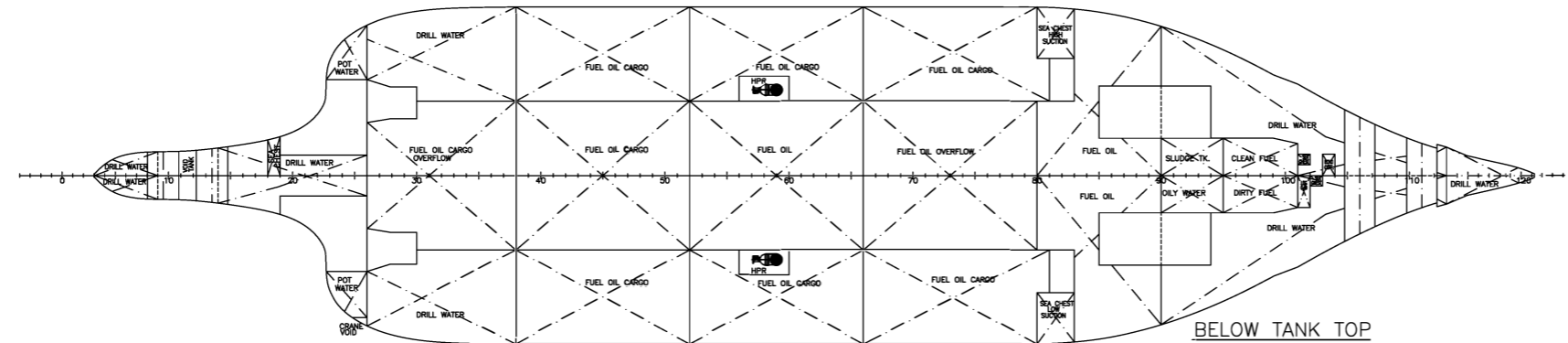
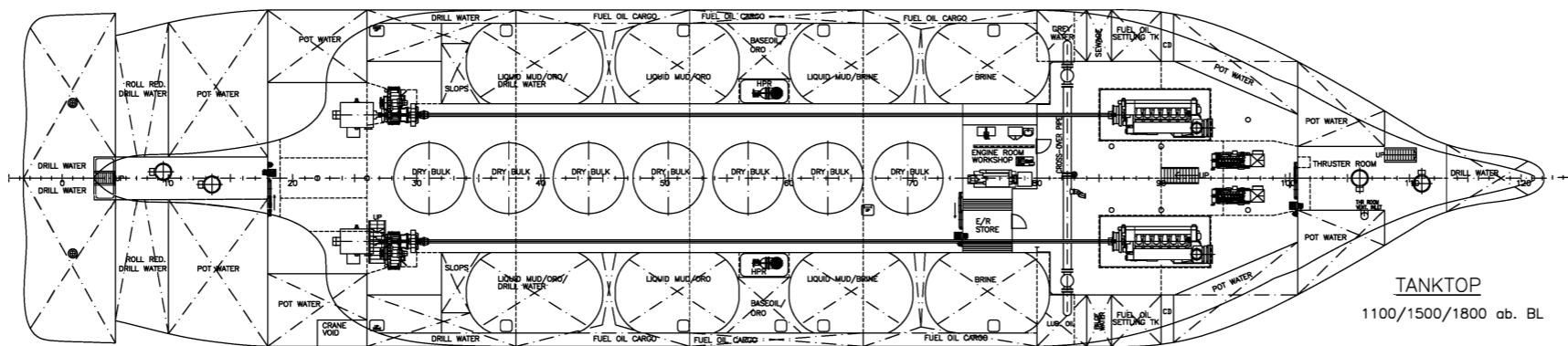
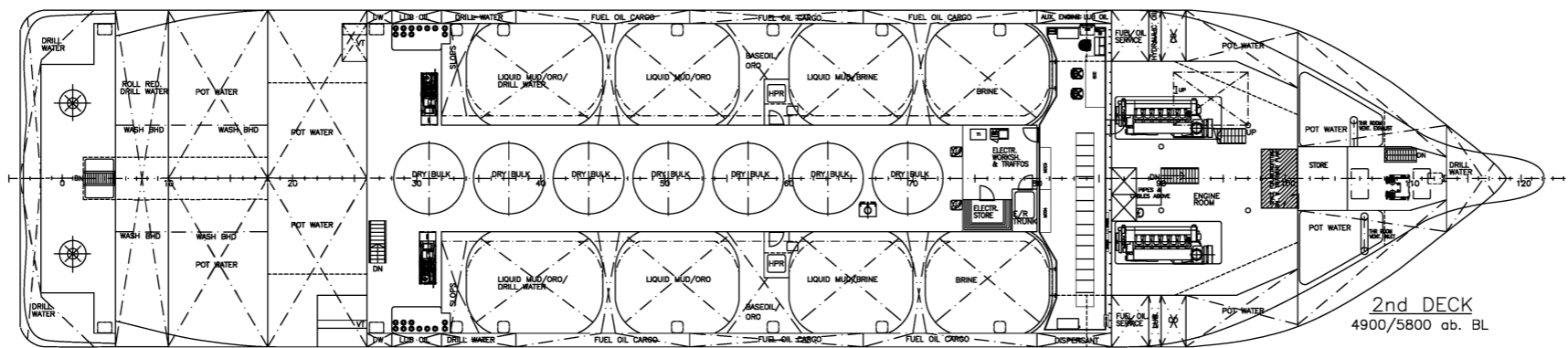
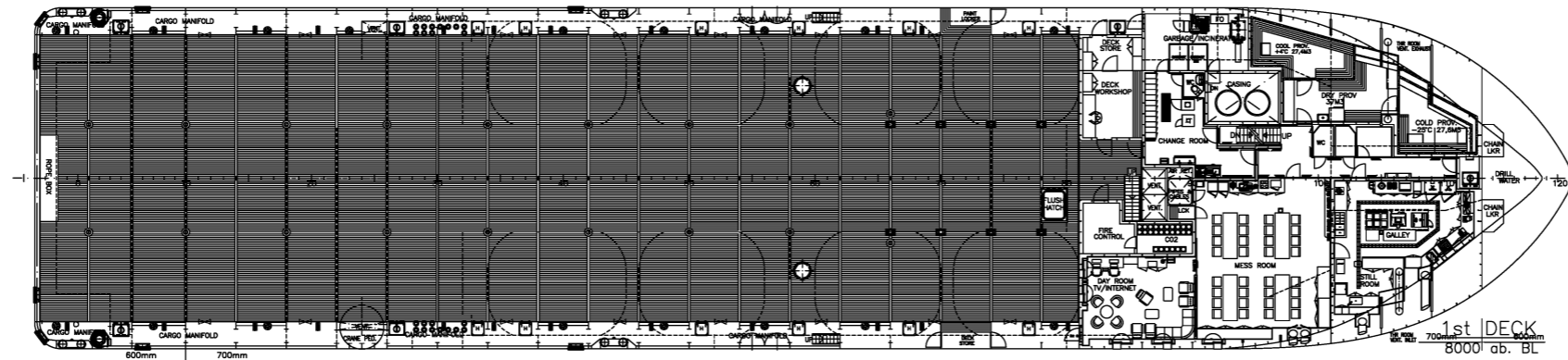
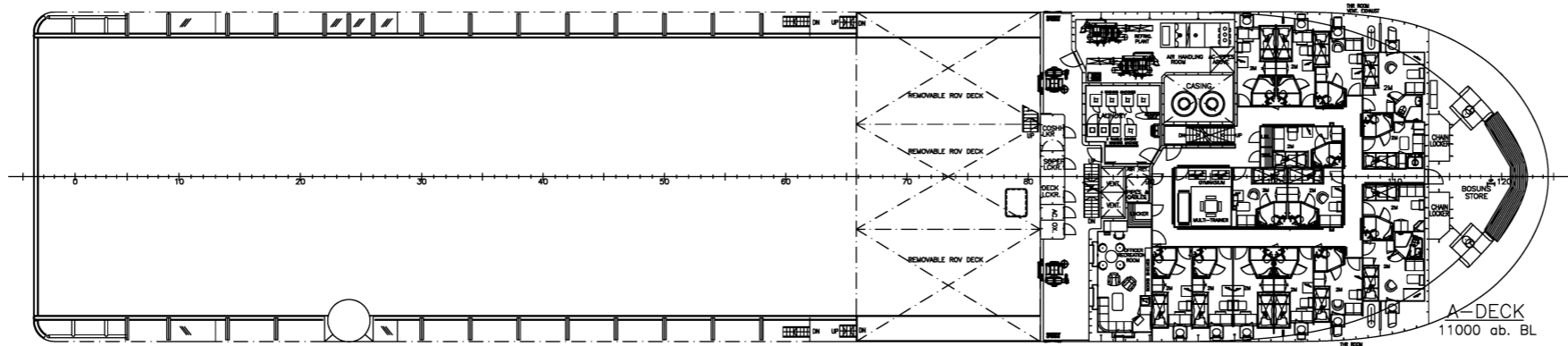
B-DECK  
14000 ab. BL

CABIN PLAN

	In 1 Man Cabins	In 2 Men Cabins	TOTAL CABINS:
C-DECK:	8pers	-	8cabins
B-DECK:	4pers	18pers	13cabins
A-DECK:	-	30pers	15cabins
1st DECK:	-	-	-
TOTALS:	12pers	48pers	60p/36cab

PRINCIPAL PARTICULARS:

LENGTH OVER ALL:	87.40 m
LENGTH BETW. PERP.:	80.40 m
BREADTH:	19.00 m
DEPTH TO 1st DECK:	8.00 m
DEPTH TO 2nd DECK:	4.90 m
FRAME SPACING:	600/700/600 mm



PRINCIPAL PARTICULARS:	
LENGTH OVER ALL:	87.40 m
LENGTH BETW. PERP.:	80.40 m
BREADTH:	19.00 m
DEPTH TO 1st DECK:	8.00 m
DEPTH TO 2nd DECK:	4.90 m
FRAME SPACING:	600/700/600 mm