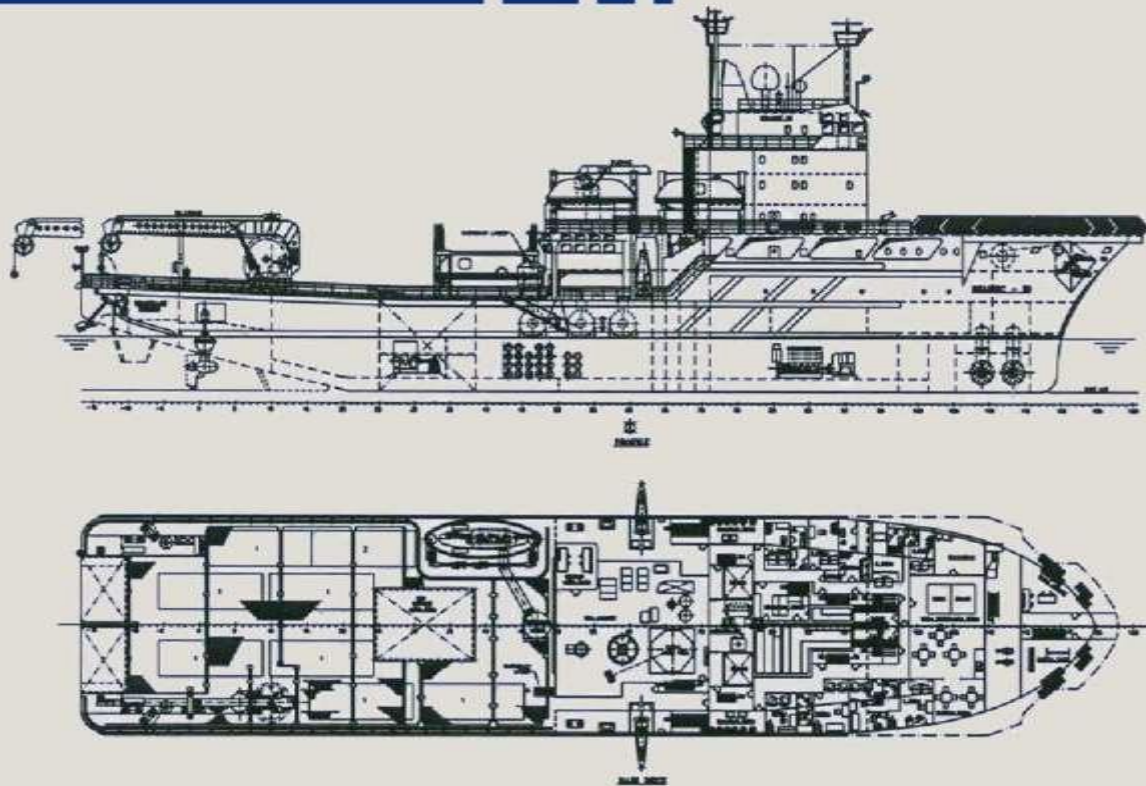


**DP2 Multi-functional Diving Support Vessel with Built-in SAT System
Available for Private Sale**





DP2 Multi- functional SAT/ Air Diving Support Vessel, capable of working throughout the year in severe sea and weather conditions.

Capabilities

Built in 1983, the vessel is designed/constructed and certified for worldwide offshore subsea operations. The Vessel provides services, which includes S.B.M maintenance removal and installations, Platform, Riser and Pipeline repairs, Subsea Construction and Maintenance operations including deployment of ROV/ AUV for survey scopes of work.

Diving System

Designed for 300 MSW. (Presently certified to 230 MSW). Three men bell with heave compensated handling system. 'Gas Miser' reclaim for divers. Two six men and One four man D.D.C.'s. Divers under pressure can be evacuated by means of the hyperbolic lifeboat positioned on the port side. The system includes complete Life Support Machineries with Life Support controls and Dive operation control, along with Dive Control Room, Diver Gas reclaim System and under deck Gas storage of 11,000 m³ (approx) and Gas transfer Compressor. The surface Air Diving station is located on the starboard side.

Communications

GMDSS Compliant equipments available on board.

Dynamic Positioning System

The vessel is fitted with a fully redundant *Kongsberg* SDP 521 Dynamic Positioning System Class 2. There are two (Simrad HiPAP 350) hydroacoustic transducers, two satellite positioning systems (DGPS), and two vertical taut wire reference systems for shallow waters and a Laser Radar System.

Accommodation

Modern accommodation is provided, comprising of:

- 11 x Single berth cabins
- 33 x Double berth cabins
- 02 x Four bed cabins
- 01 x Six bed cabins
- Additional 02 bed Hospital.

Cranage

The vessel is fitted with 50 tonne SWL telescopic crane and 5 tonne SWL telescopic cargo crane.

Specifications

Principle dimensions:

Length overall.....92.70 m
 Length Between pp.....76.20 m
 Breadth Moulded.....18.00 m

Operating draft

Summer draft.....5.21 m

Deadweight.....2067 tonnes

Tonnage

Gross Tonnage.....4327 tonnes
 Net Tonnage.....1298 tonnes

Cranage

Main lifting facilities

- 1 x 50 ton 360° Electro/Hyd.Crane

Additional lifting facilities

- 1 x 5 ton Stores Crane on Boat deck

Deck space

600 sq.m

Deck load

5 tons/sq.m

Max overall

800 T

Capacities

- Marine diesel oil 750 m³
- Fresh water 335 m³
- Ballast water 1069 m³

Year of built / Builder

1983 at De Hoop, Lobith Shipyard, Holland

DP system

Kongsberg SDP 521

Reference Systems

- 2 x Simrad HPR (Hi PAP 350)
- 2 x DGPS (Fugro Seastar 3010+3510 LR)
- 2 x Taut wires (MK III)
- 1 x MDL Fan Beam 4.2

Environmental Regulatory

Number 99/99/94

Power Plant

- 4 x Man/Brons 25/ 30 9 cylinder diesel each driving a NEBB. Alternator producing 1700 Kw at 6000 volts 60 Hz

Total generated power 6800 kW

Propulsion

Bow

- 2 x Brunvoll tunnel thruster, Type SPR-VP, 790 Kw each at 312 RPM

Stern

- 2 x LIAAEN compass thrusters, Type TCN 105/75-250, 1880 Kw each at 225 RPM

Endurance

Fuel consumption (typical)

- In port 4 m³
- Transit 14 m³ @ 8 knots
- DP approx 11 m³

Fresh water making capacity 20 M³ / day

Vessel speed

- Maximum speed 10 knots
- Economic Transit Speed 8 knots

Fire Fighting Fi- Fi Monitors

- 04 Nos. 1800 cu.m. /hr each. Thune Eureka.

Helideck

Bell 212 or similar

Diving system

- Depth rating 300 MSW (presently available) 230 MSW
- No in sat 18
- No of bells 1 x 3 man
- Bell volume 4.5 m³
- System volume 78 m³
- Gas storage 11,000 m³ Moonpool 3.5 m x 3.5 m

Flag

TBD

IMO No.

TBD

Call sign

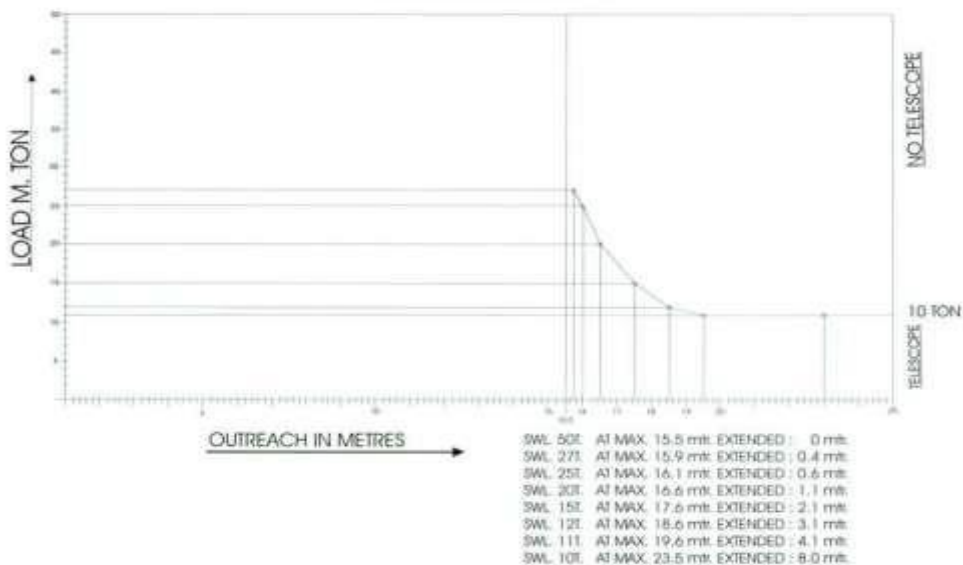
TBD

Classification

LRS: +100A1 Diving Support Ship / Fire Fighting Ship 2 (7200 M³ /hr) with water spray; Helicopter Deck; Ice Class 3, +LMC, UMS, DP(AA)

IRS: SUL, Diving Support Vessel, AGNI 2 (7200 M³ /hr), JUS & HELOK, DP2, SYJ

**LOAD CHART 50M. TON TELESCOPIC DECK CRANE
(GREY MCKENZIE)**





Additional Vessel Information:

Built at Shipyard: Scheepswerf "De Hoop" B.V. Lobith, The Netherlands

Vessel Last dry-dock: 05/17/2023

Vessel Next dry-dock: 05/16/2028

Maximum depth: 5.0 m

Freeboard: 2420 mm

Light Ship: 3668.89T

Maximum Speed: 12.0 kn

Engine Maker: Brons Industrie N.V.

Accommodation Capacity : 90 POB

