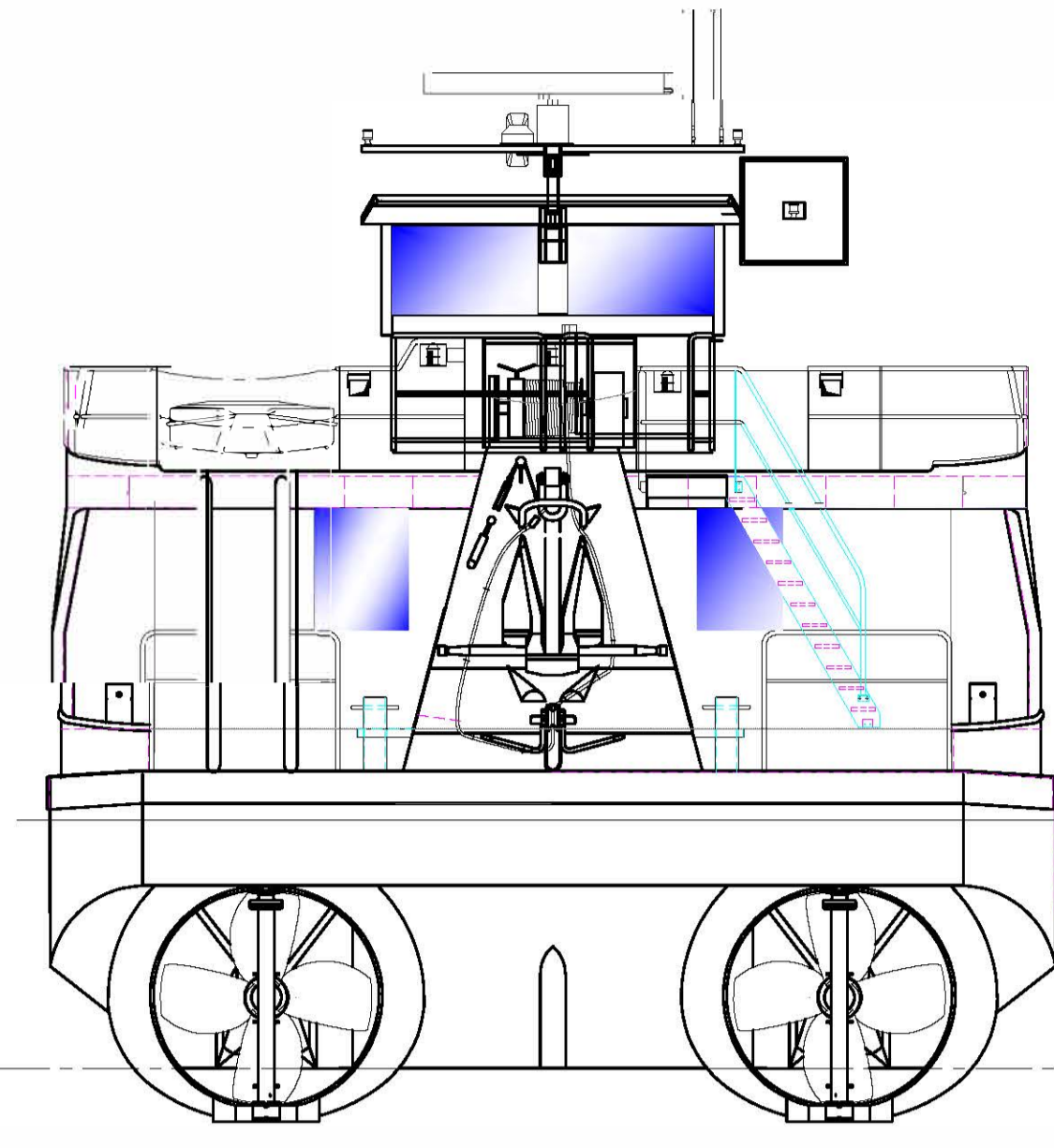
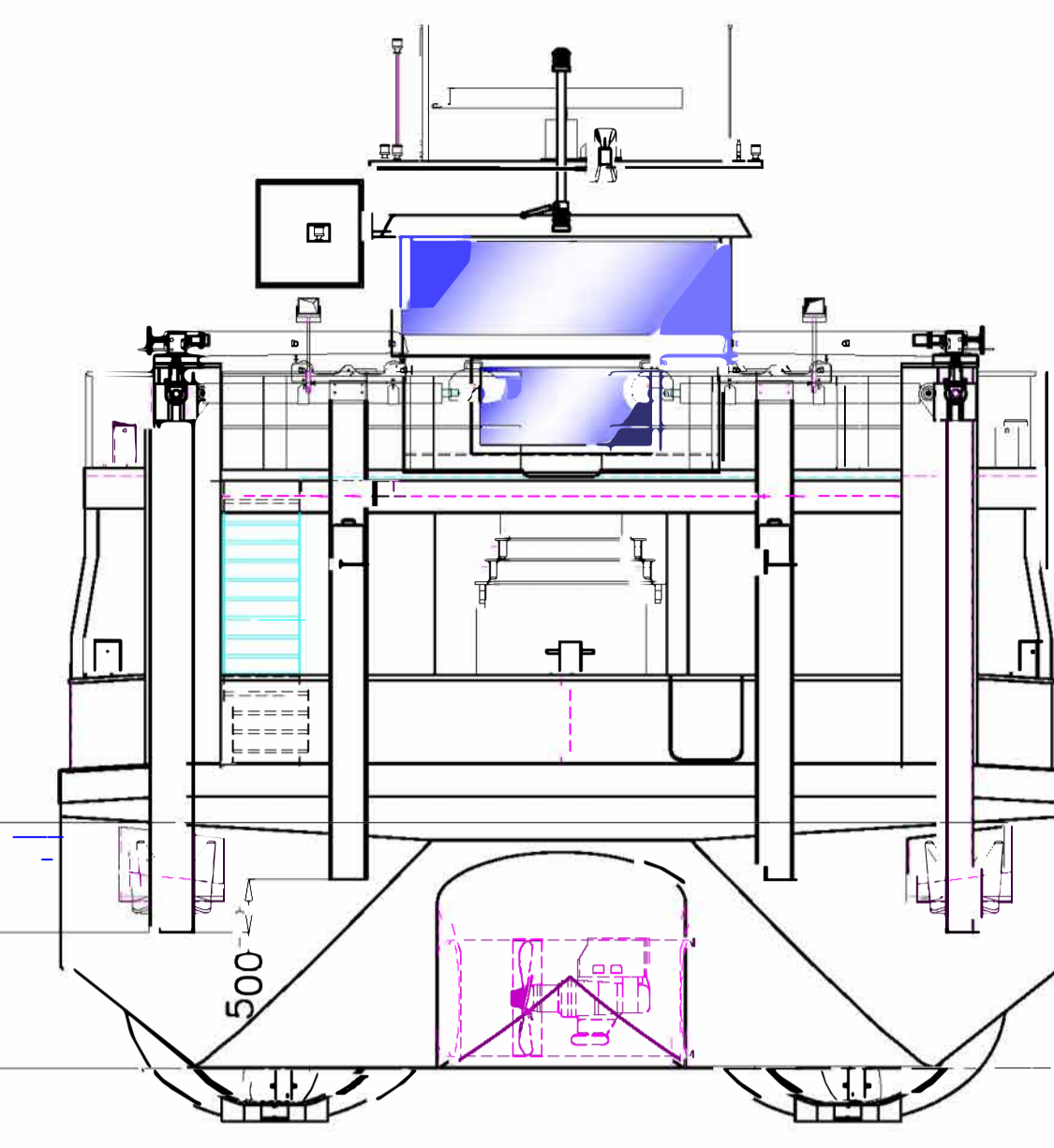
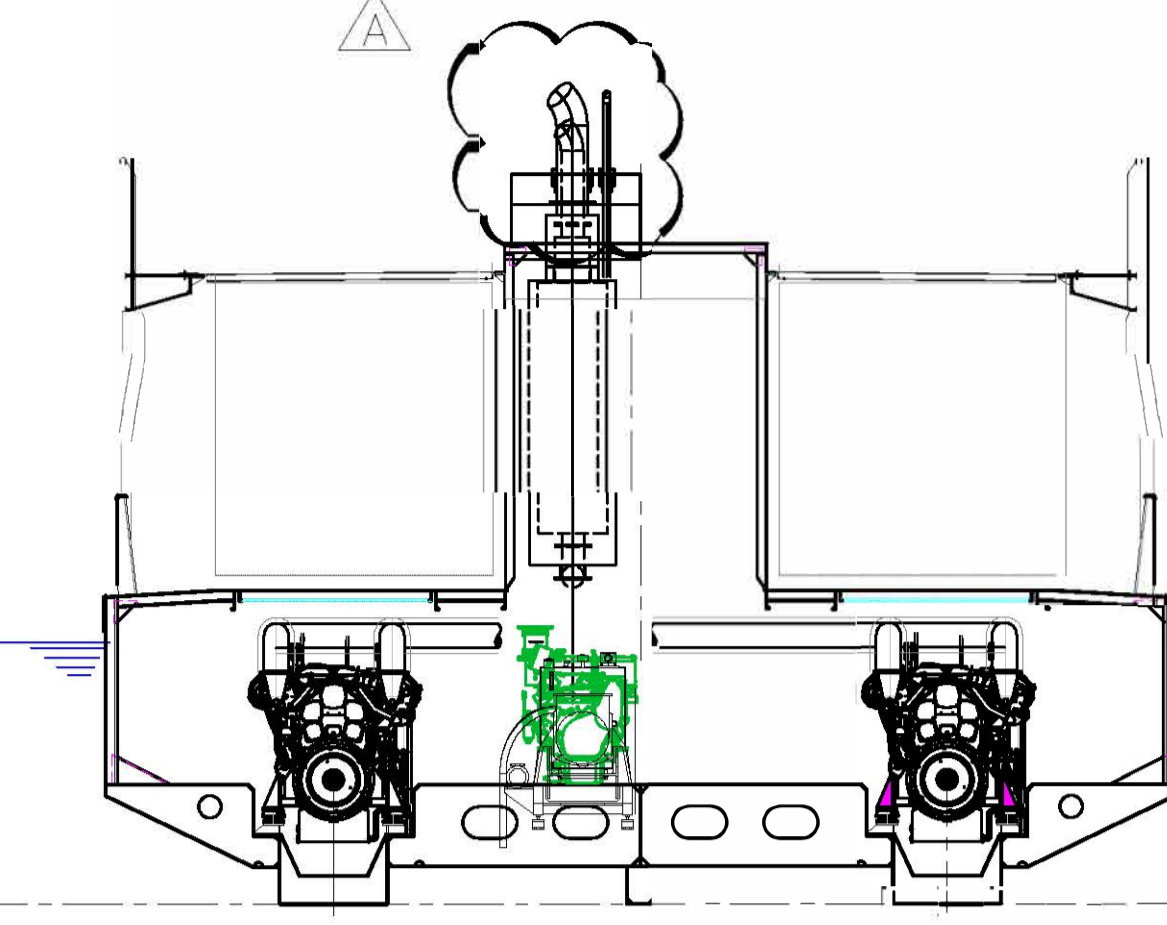


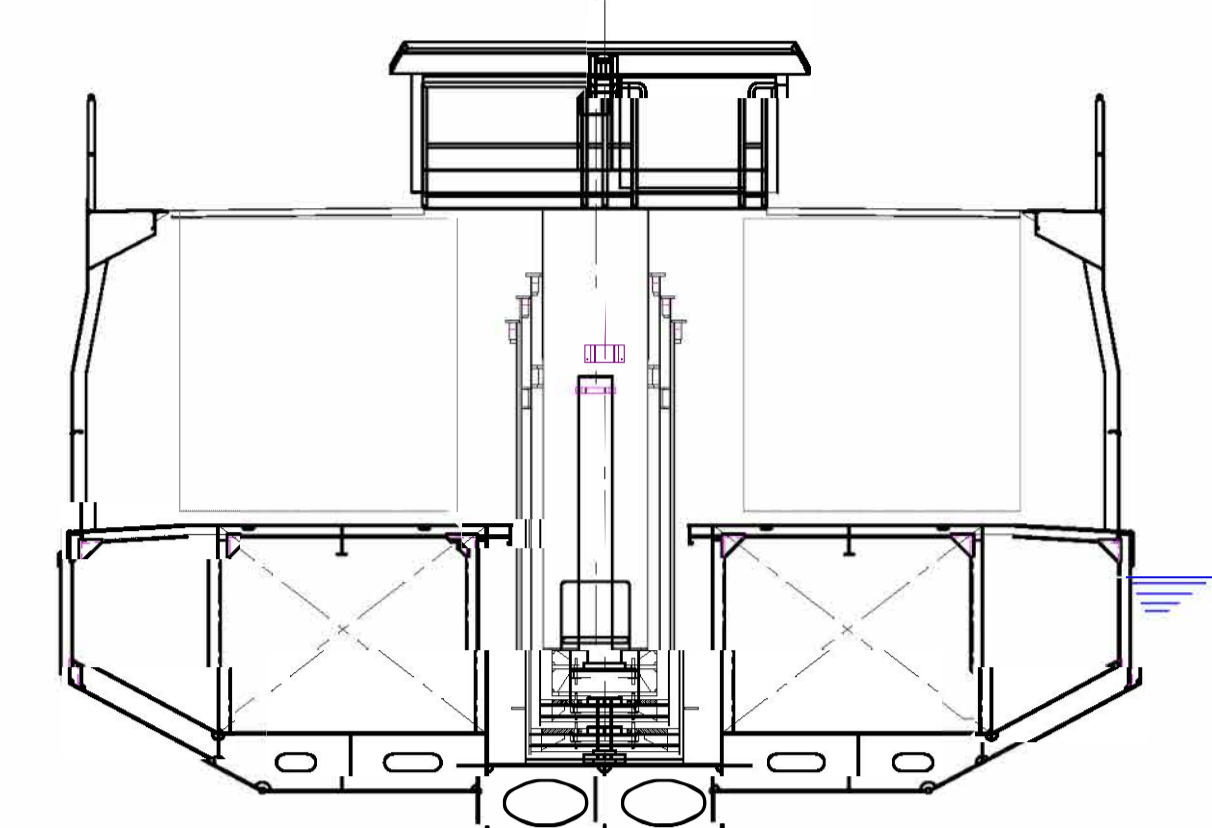
VUE DE L'AVANT



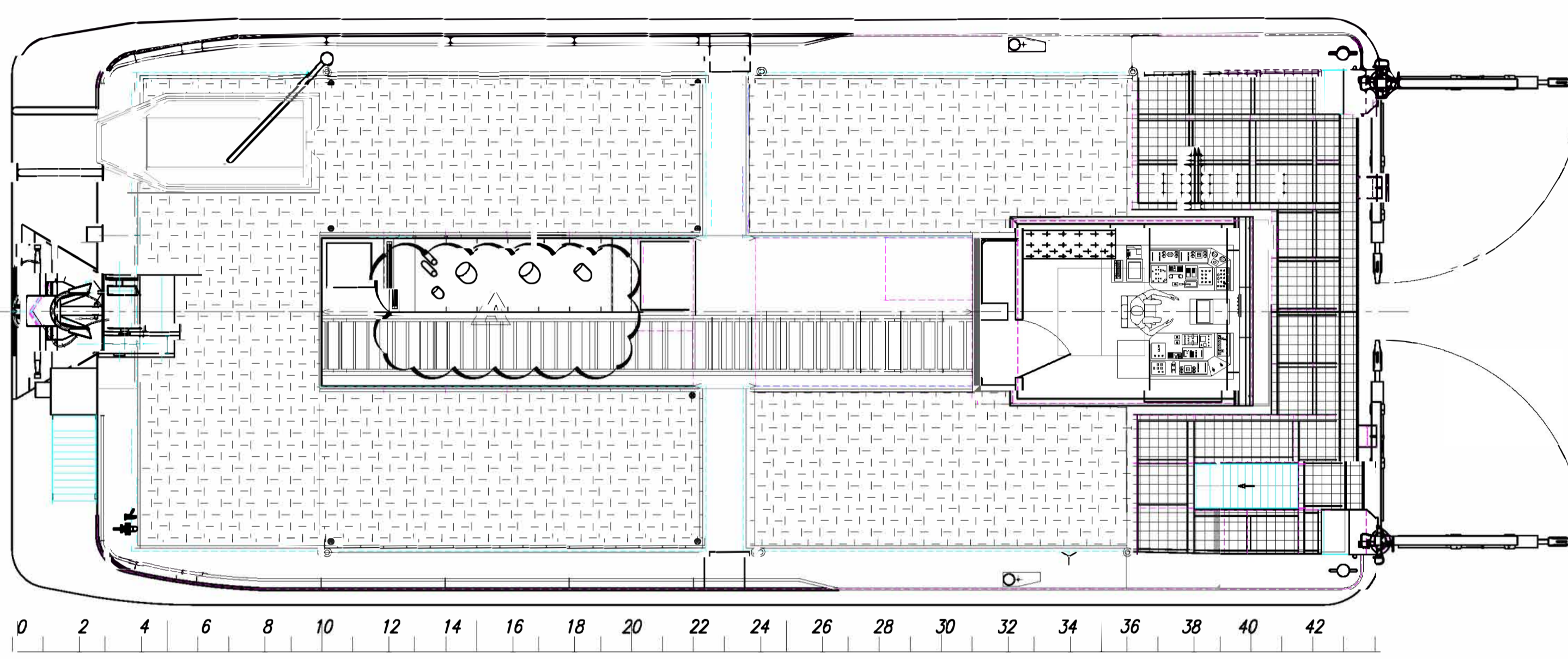
COUPLE 17



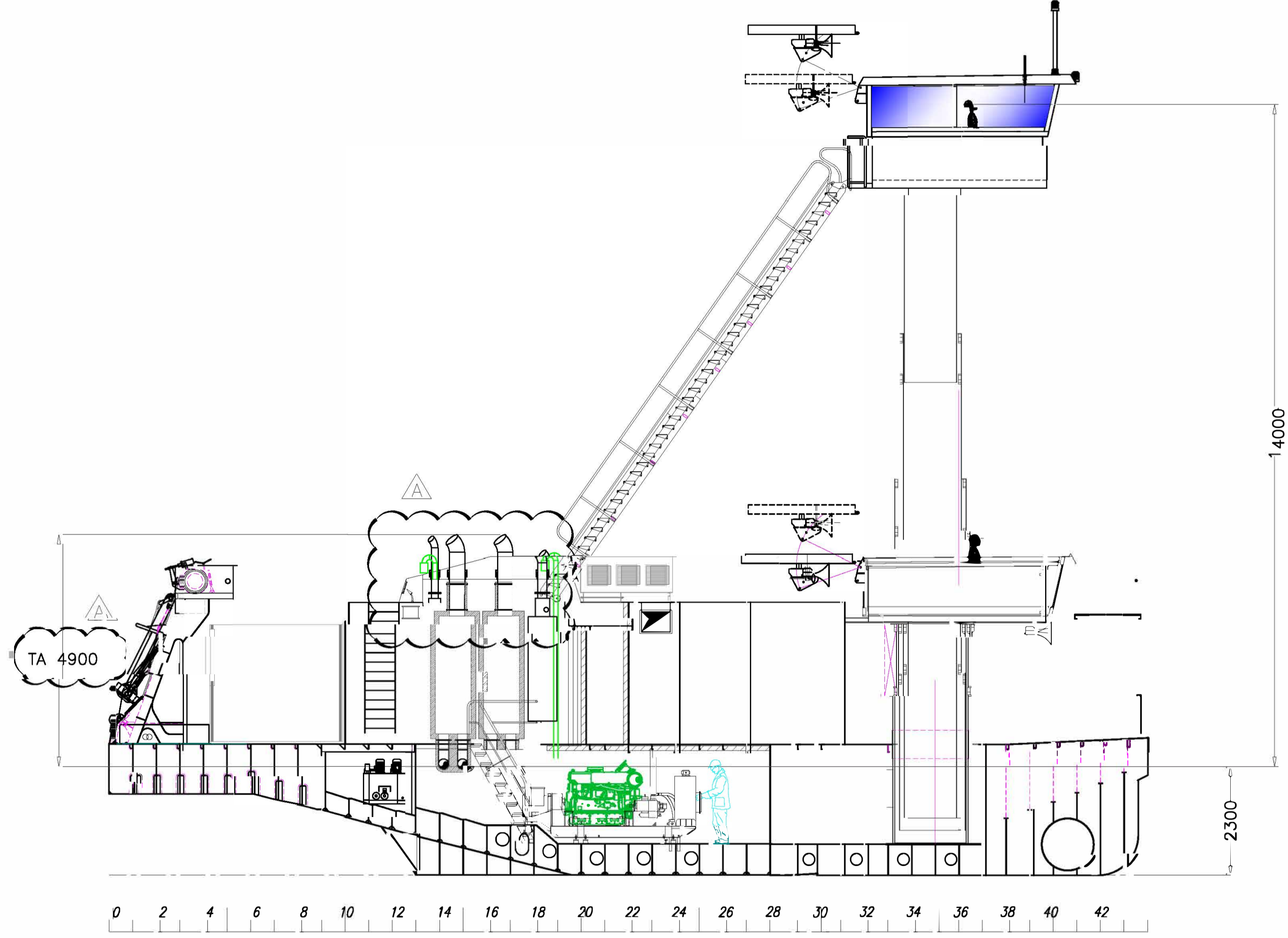
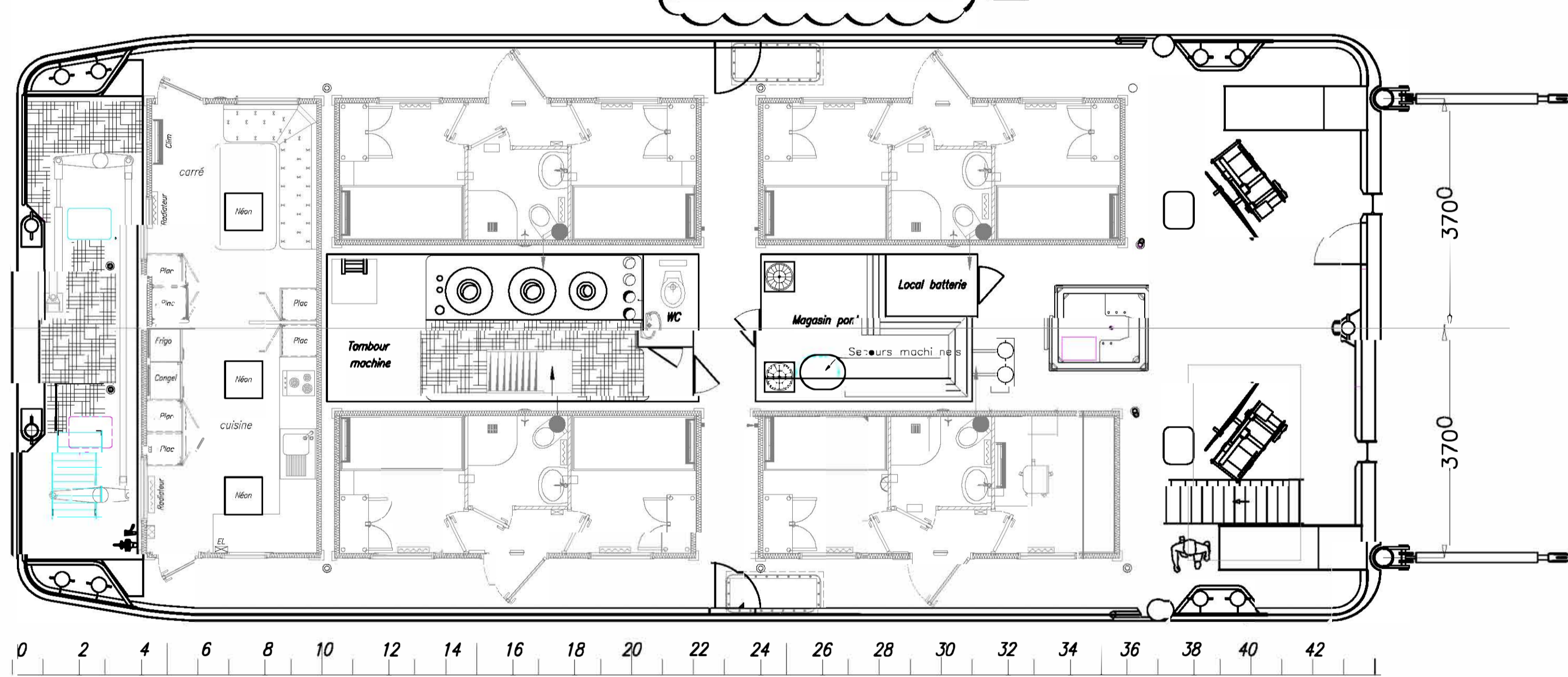
COUPLE 35



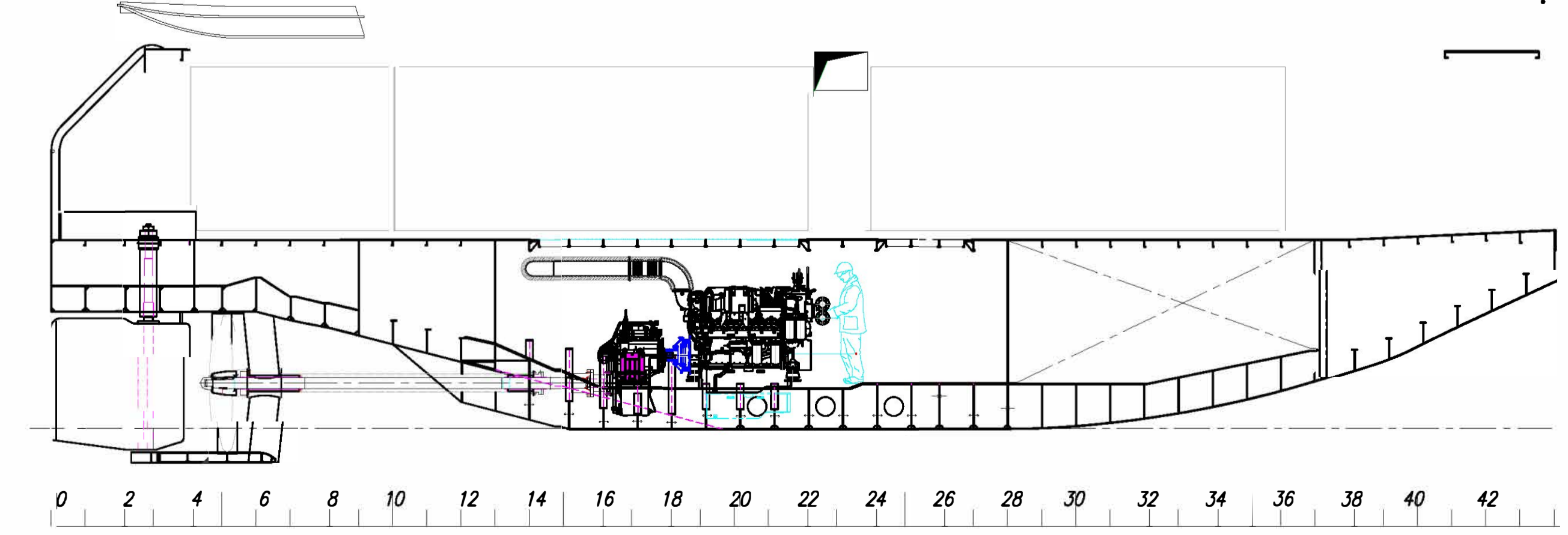
TOIT DES ROOFS



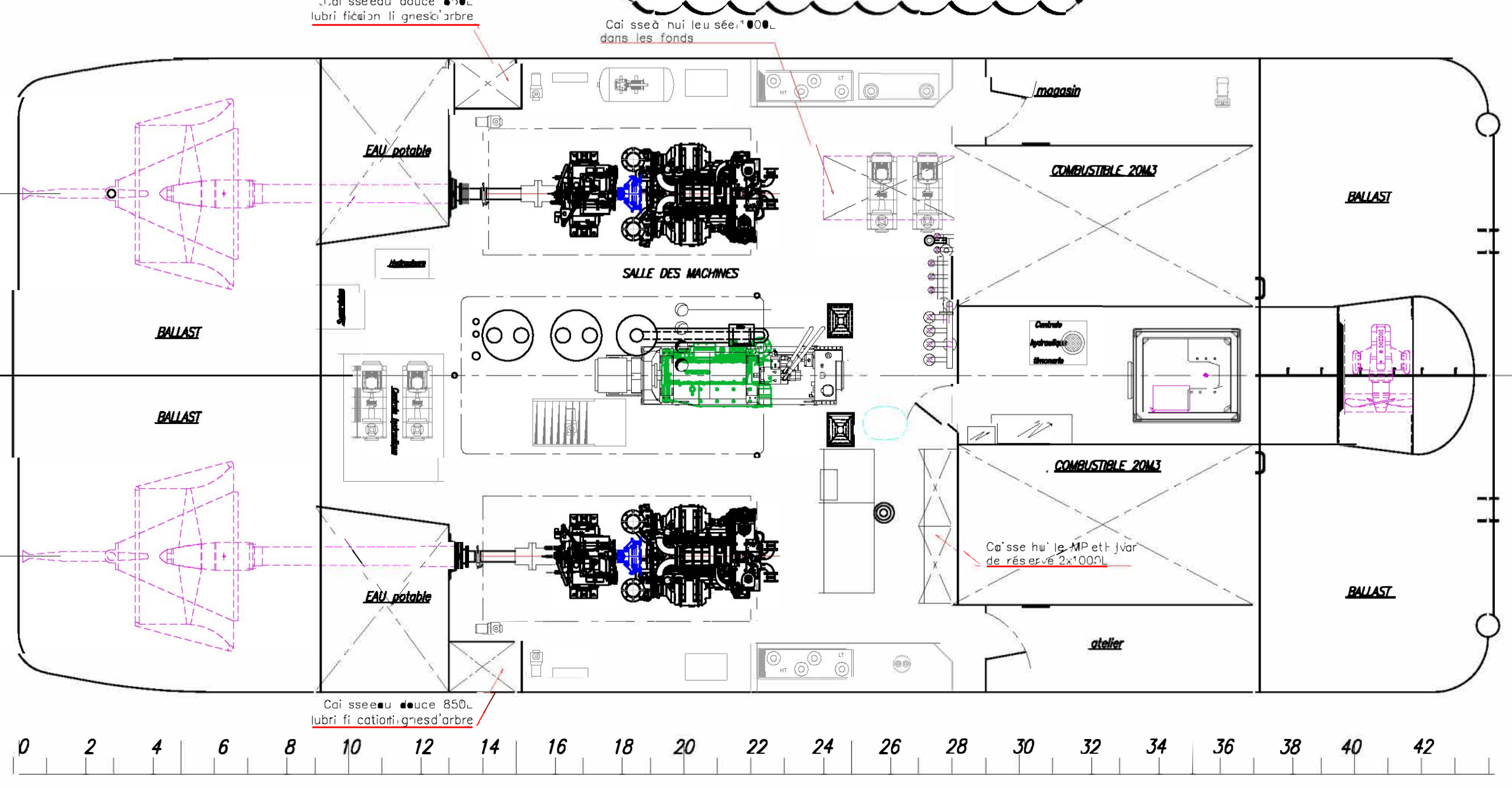
PONT PRINCIPAL



VUE LONGITUDINALE 2700/AXE



COUPE SOUS LE PONT



CARACTERISTIQUES

- LONGEUR SUR LE PONT 22.000 M
- LONGEUR HORS TOIT (HORS TUBES DE POUSSÉE) 22.200 M
- LARGEUR HORS MEMBRES 9.400 M
- LARGEUR HORS TOIT 9.450 M
- CREUX AU LIVEL DE PONT 2.700 M
- TIRANT D'EAU ARRIERE AU DROIT DES TUYERES 2.50 M/2.80 M
- PUISSANCE DES MOTEURS 2400 Ch.
- PUISSANCE PROPULSEUR TRANSVERSAL 400 Ch.
- VITESSE CONVOI POUSSE 16/18 Km/h
- TIRANT D'AIR TIMONERIE EN POSITION H-te. 14.000 M
- TIRANT D'AIR TIMONERIE EN POSITION BASSE 5.50 /4.90 M

Rev.	Date	Modification	FL