

PERFORMANCE INNOVATION RELIABILITY QUALITY

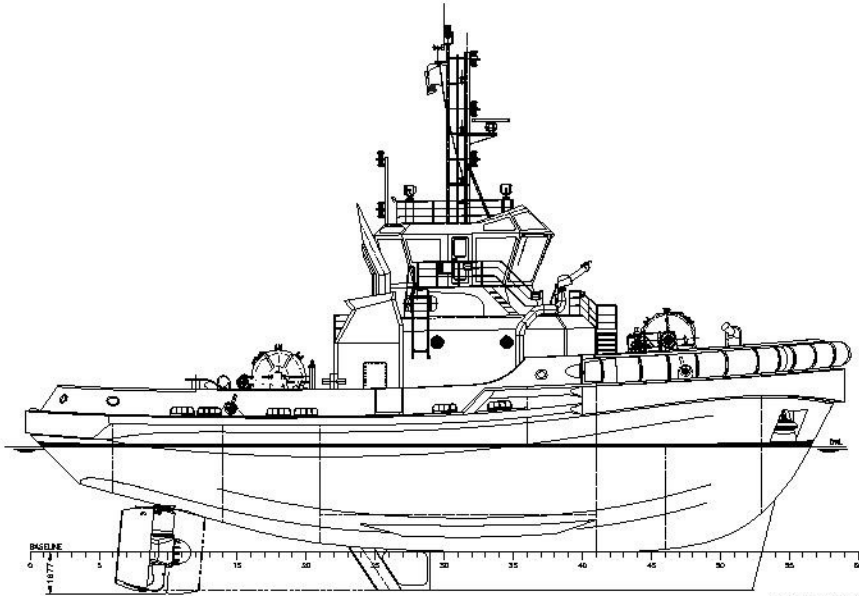
RASTAR 3200-CL



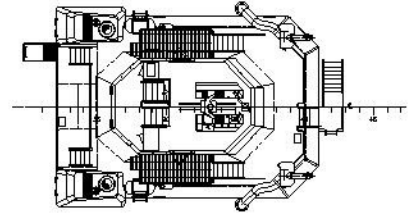
SPECIFICATIONS

Length, overall	32.00m	Engines	2 x Cat 3516C, 3,386 bhp
Breadth, moulded	12.80m	Propulsion	2 x Schottel SRP 490FP
Depth, moulded	5.37m	Generators	2 x Cat 7.1, 118 ekW
Draft, Navigation	5.50m	Speed	13.5 knots
Gross Tonnage	492	Complement	10 persons
Nett Tonnage	147	Towing Winches	MacGregor hydraulic
Fuel	150 m ³	Deck Crane	Guerra, 1.5t@6m
Potable Water	55 m ³	Classification	Lloyd's +100A1 Escort Tug, Fire-fighting Ship 1 (2400m ³ /h) with Water spray, *IWS, +LMC, UMS, Unrestricted Service
Foam	12.7 m ³		
Bollard Pull, ahead	82 tonnes	Naval Architect	Robert Allan Ltd.
Bollard Pull, astern	77 tonnes		

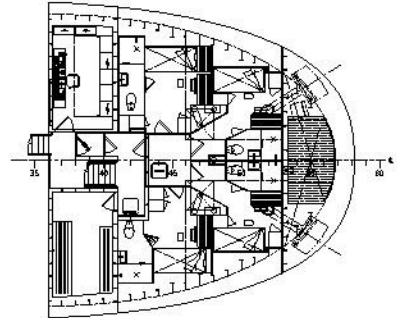
RASTAR 3200-CL



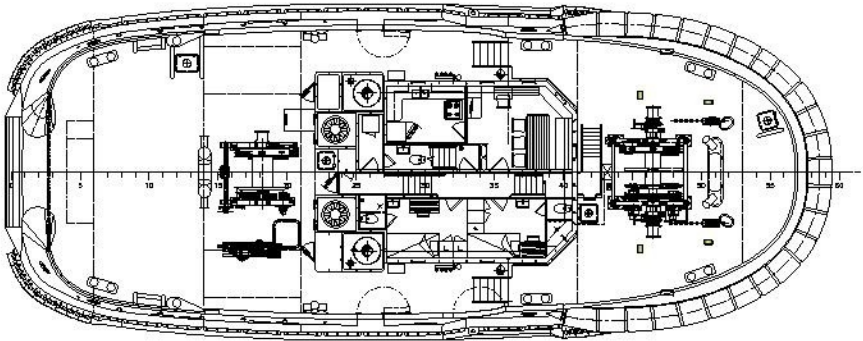
OUTBOARD PROFILE



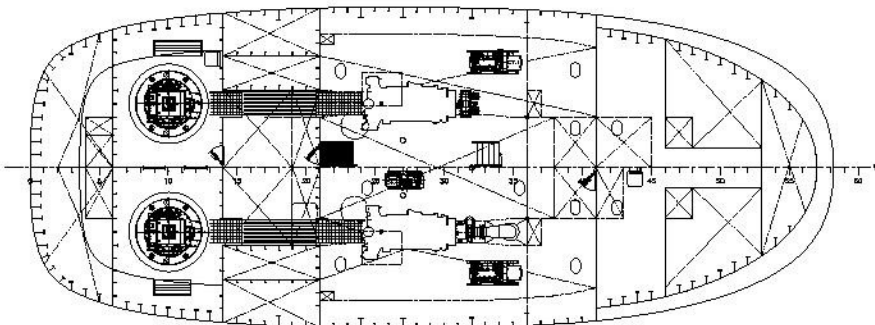
BRIDGE DECK PLAN



LOWER ACCOMMODATIONS PLAN



MAIN DECK PLAN



HOLD PLAN