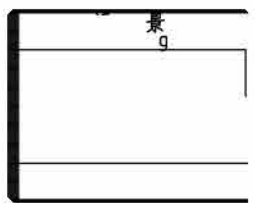
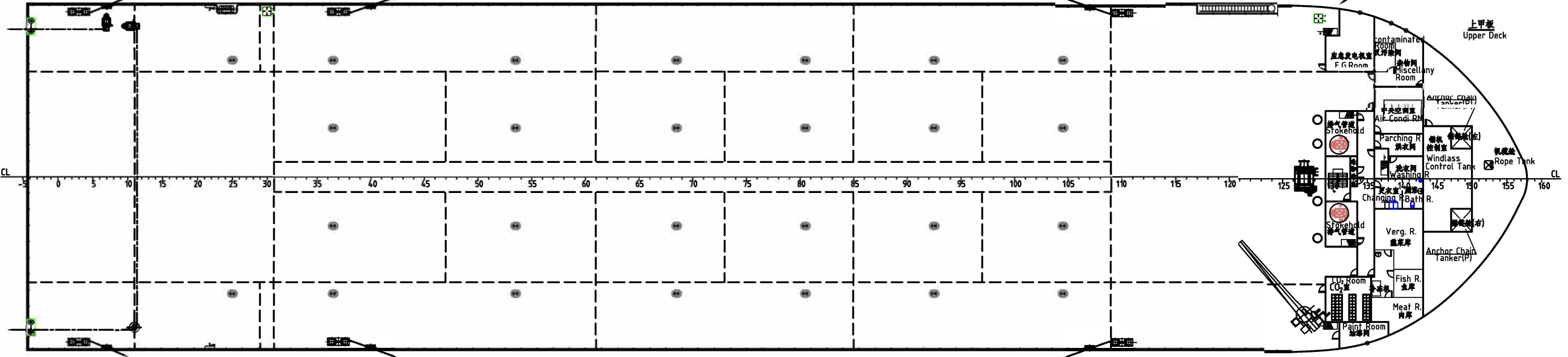
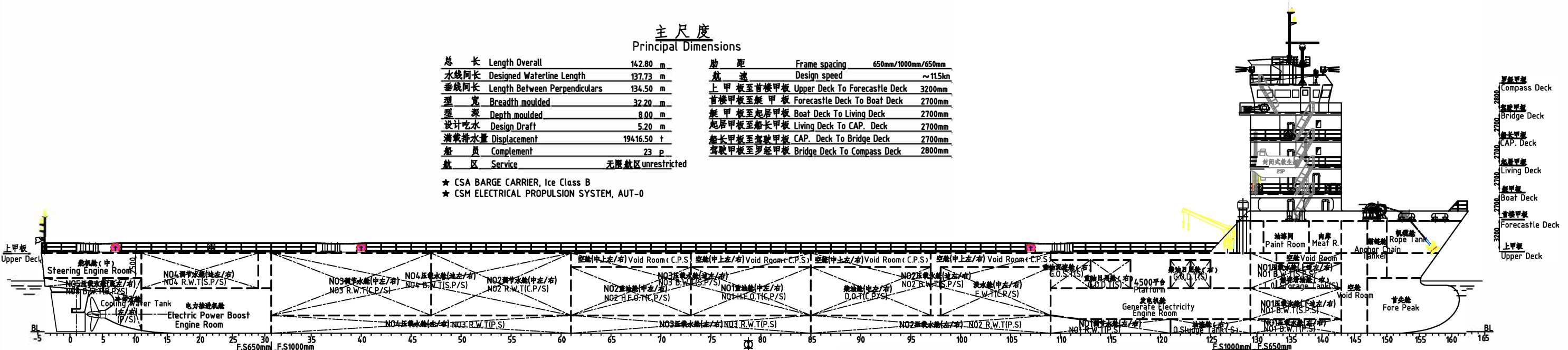


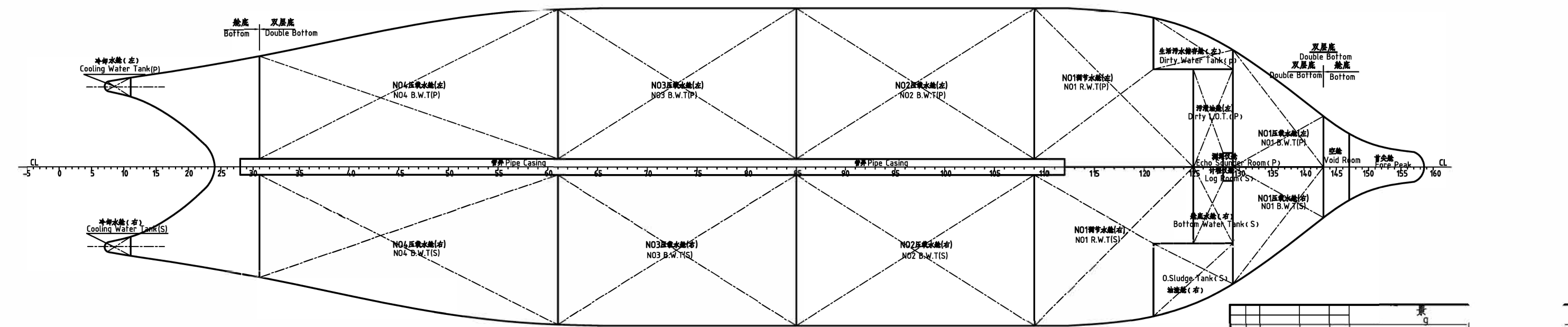
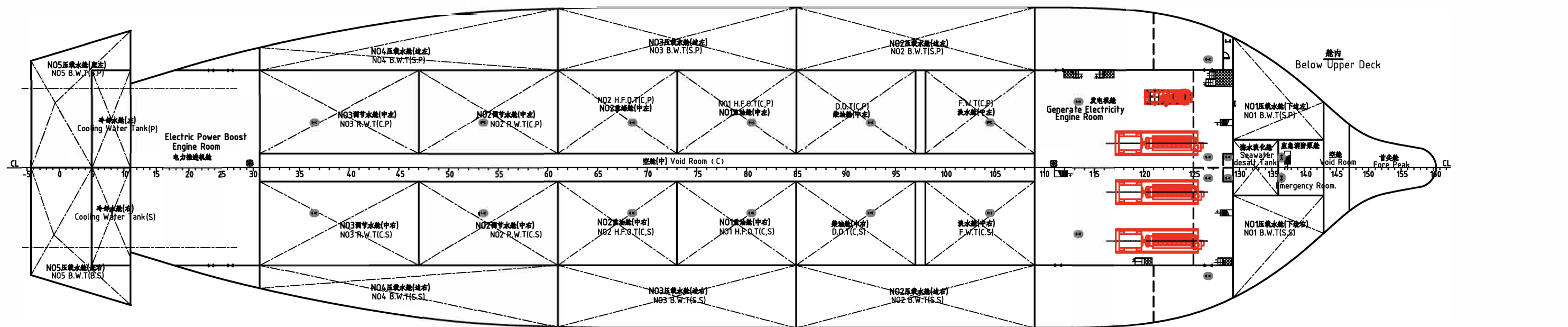
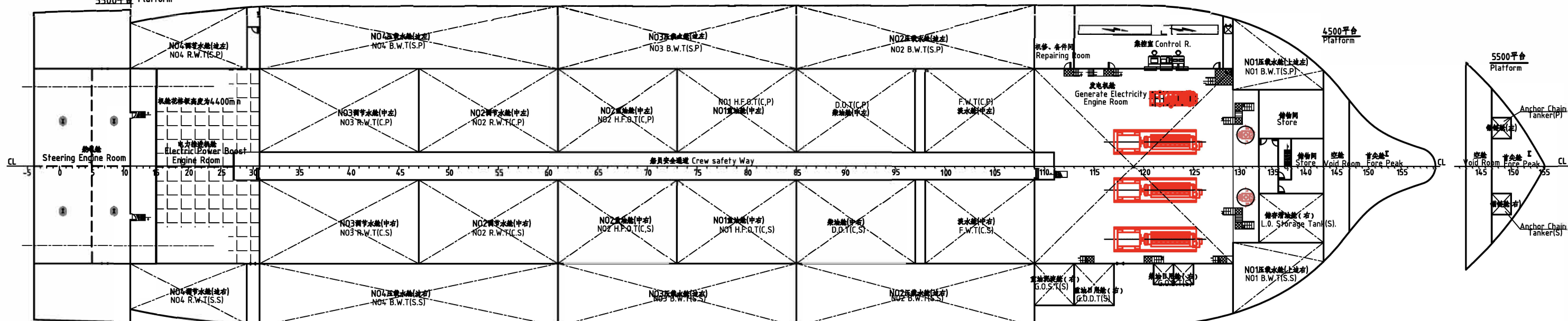
主尺度 Principal Dimensions

总长	Length Overall	142.80 m	肋距	Frame spacing	650mm/1000mm/650mm
水线间长	Designed Wateline Length	137.73 m	航速	Design speed	~11.5kn
垂线间长	Length Between Perpendiculars	134.50 m	上甲板至首楼甲板	Upper Deck To Forecastle Deck	3200mm
型宽	Breadth moulded	32.20 m	首楼甲板至艇甲板	Forecastle Deck To Boat Deck	2700mm
型深	Depth moulded	8.00 m	艇甲板至起居甲板	Boat Deck To Living Deck	2700mm
设计吃水	Design Draft	5.20 m	起居甲板至船长甲板	Living Deck To CAP. Deck	2700mm
满载排水量	Displacement	19416.50 t	船长甲板至驾驶甲板	CAP. Deck To Bridge Deck	2700mm
船员	Complement	23 p.	驾驶甲板至罗经甲板	Bridge Deck To Compass Deck	2800mm
航区	Service	无限航区unrestricted			

★ CSA BARGE CARRIER, Ice Class B
★ CSM ELECTRICAL PROPULSION SYSTEM, AUT-0



舵机平台, 4500平台
5500平台 Platform



设计	
校对	
审核	
审批	
日期	