

Azimuth Stern Drive Tugboat 85 T BP



GENERAL

Hull Material	Steel
Superstructure Material	Steel
Designer	Robert Allan Ltd.
Classification	BV 1 ✕ HULL, ✕ MACH, Escort Tug, Fire Fighting 1
Class Notation	Water spraying, Sea going, Navigation Area A1+A2+A3

DIMENSIONS

Length overall	32.00m
Beam overall	13.20 m
Depth (mld)	5.50 m
Draft navigational	6.50 m
Frame Space	600 mm
Complement	10 persons
International Gross tonnage	499 GT

PROPULSION AND STEERING SYSTEM

Main Engines	2 ✕ Marine Diesel Engines MTU 16V4000M65L
Total Power	about 2,560 kW @ 1800 rpm 2 ✕ Azimuth propeller units
Propellers	Kongsberg US255S P30 Dia. 3000mm

PERFORMANCE

Speed	13 kn
Bollard Pull ahead	85 ton (minimum)

ELECTRICAL EQUIPMENT

Generator Sets	2 ✕ 168 kW @ 1500 rpm
Network	400V, 50Hz

AUXILIARY EQUIPMENT

Fire/General Service Pump	25 m ³ /hr @ 4 Bar
Bilge Pump	25 m ³ /hr @ 4 Bar
Fuel Oil Transfer Pump	10 m ³ /hr @ 2 Bar
Firefighting Pump	1400 m ³ /hr
Oily Water Separator	0.15 m ³ /hr @ 15 ppm
Sewage Treatment Plant	10 persons/day

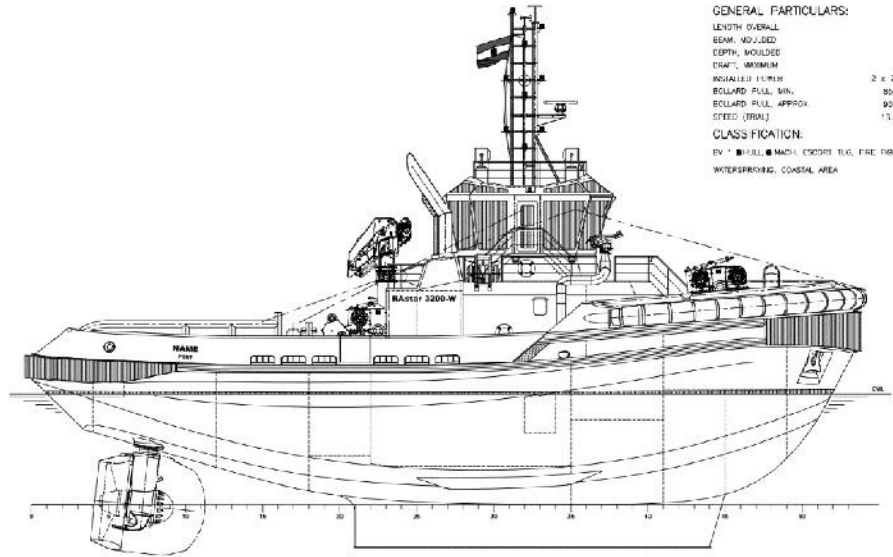
DECK EQUIPMENT

FWD Winch Windlass	1 ✕ 250 ton Brake Holding Load, escort, rendering/recovery
FWD Towing System Load Rating	125 ton
AFT Towing Winch	1 ✕ 250 ton Brake Holding Load, anch handling, comprised of winch, staple tow hook, recovery
AFT Towing System Load Rating	90 ton

ADDITIONAL EQUIPMENT

Deck Crane
Rescue Boat
Rescue Boat Crane
Stern Roller
Ropes

Azimuth Stern Drive Tugboat 85 T BP

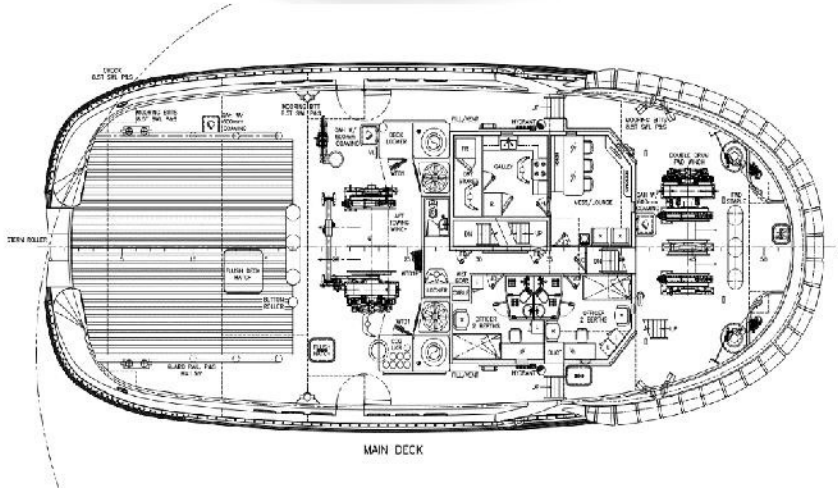


OUTBOARD PROFILE

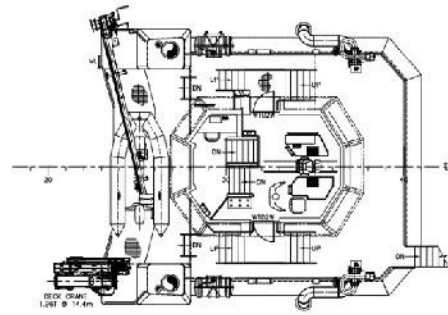
GENERAL PARTICULARS:

LENGTH OVERALL	32.0 m
BEAM, MOLDED	13.2 m
DEPTH, MOLDED	5.5 m
DRAFT, MAXIMUM	6.5 m
REGISTERED TONNAGE	2 x 2,563 t
BOLLARD PULL, MIN.	85 TONNES
BOLLARD PULL, APPROX.	90 TONNES
SPEED (BRAK)	13.5 KNOTS

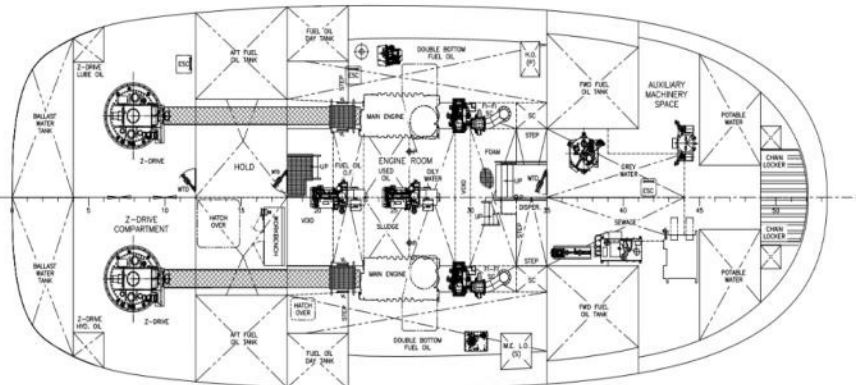
CLASSIFICATION:
 BV * FULL * MACH * ESOPR TUG, FIRE FIGHTING T,
 WATERPROOF, COASTAL AREA



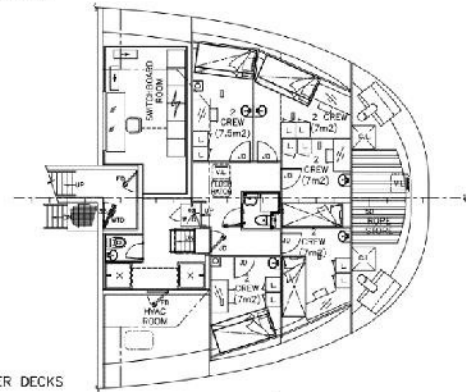
MAIN DECK



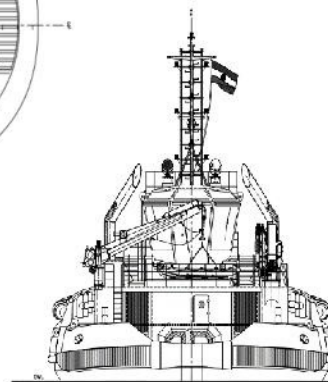
BRIDGE DECK



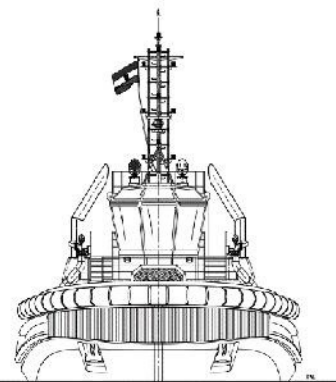
HOLD PLAN



LOWER DECKS



STERN VIEW



BOW VIEW