



ACCOMODATION WORK BARGE 200 PERSONNEL

A non-self-propelled accommodation work barge supporting offshore work installation, fabrication, maintenance and recovery activities. 8-point mooring system, Crane capacity 15T@50m and 50T@20m, accommodation facility for 200 personnel.

PRINCIPAL PARTICULARS:

Year Built	: 2009
Classification	: Bureau Veritas (BV)
Flag / Registry	: TBD
Call Sign / IMO No.	: TBD
Construction	: Steel
Length Overall	: 85.34 m
Breadth	: 24.38 m
Depth	: 4.88 m
Loaded Draft	: 3.40 m
GRT / NRT	: 4425 / 1327 Tons
Deadweight	: 3350.13 T

MACHINERY AND PROPULSION:

Aux. Engines	: 3 x 400 kW (500 kVA) Cummins Chongqing- KTA19G4M, 415V/50 Hz
Emergency Generator	: 1 x 99kW (123.75 kVA) Cummins 6C.3 - GM115, 415 V/50 Hz @ 1500 rpm

CARGO CAPACITIES:

Clear Deck Space	: 650 m ² (Without Crane Space)
Deck Strength	: 15 t/m ²
Fuel Oil	: 444 m ³
Fresh Water	: 817 m ³
Ballast Water.	: 4647 m ³
Sewage Tank	: 44.70 m ³
Dirty Oil	: 14.60 m ³
Bilge Holding Tank	: 31.55 m ³

**interchangeable (see tank capacities plan for details)*

PUMPS:

Fuel Oil	: 1 x 80 m ³ /hr @ 50m head
Fresh Water	: 2 x 50 m ³ /hr @ 50m head
Ballast Water	: 2 x 100 m ³ /hr @ 60m head
Air Compressor	: 2 x 0.7 mps
Oily Water Separator	: 1 x 1.13 m ³ /hr (BOSS ST 107)
Sewage Treatment Plant	: 1 x 150 men/day + 1 x 50 men/day

DECK MACHINERY AND MOORING:

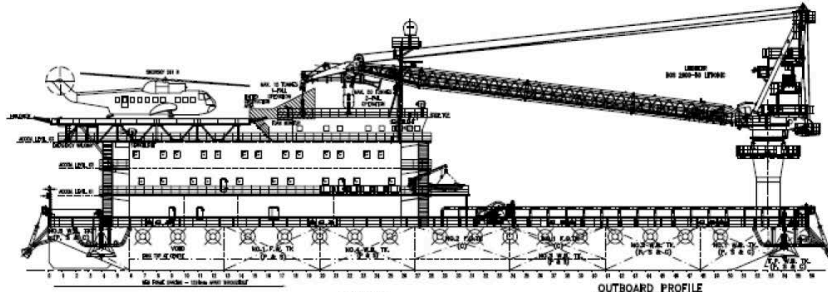
8-points mooring	: 4 x Diesel driven drum waterfall winch 77 t lines pull, 72 t brake capacity Drum Cap. 1200 m x dia. 38 mm SWR
Capstans	: 2 x 10 Tons, Electric Drive
Deck Crane	: 1 x 15t @ 50m R' / 50t @20 m R'
Anchor	: 9 x 5000 kg Flipper Delta Anchors
Anchor wire	: 9 x 1100 m x dia. 38 mm SWR
Gang Way	: Total 29.3m (21.2m + 8.1m) 2 lengths
Carufix Buoy	: 10 x 1.85 m(L) x dia.1.25 m Buoyance 1.3 mt

COMMUNICATION AND NAVIGATION:

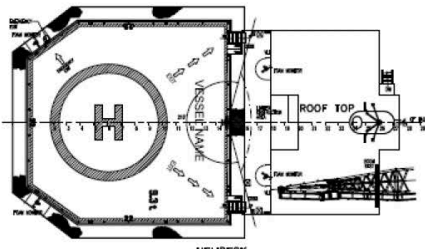
SSB	: Furuno FS-1570
GPS	: Furuno GP 32
VHF	: Furuno FM 8800S
Radar	: Furuno 1932 Mark-2
Echo Sounder	: Furuno FCV - 585
Navtex	: Furuno FAX 408
AIS	: Furuno FA - 150
Inmarsat	: Sailor 150 Fleet broadband
GMDSS	: Type A1+A2

OTHERS:

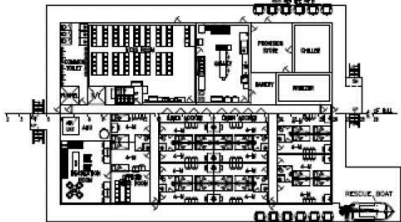
Accommodation	: 200 personnel 6 x single berth (6 men) 1 x double berth (2 men) 48 x 4 men berth (192 men)
Hospital	: 1 x double berth c/w paramedic room
Mess Room	: 99.21 m ² (80 Pax seating capacity)
Office Room	: 2 rooms on main deck & Level1 deck
Conference Room	: 1 with 18 pax seating capacity
Gym Room	: 1 fitted with 5 sets Gym Equipments
Workshop	: 1 room c/w Lathe, Drill, Grinder, Welding Machines, Electric Saw, Air Compressor, Thread Machine, etc
Life Saving and Fire Fighting Equipment	: As per SOLAS requirements
Rescue Boat with Davit	: 1 x 6 persons with outboard engine 1 x SCM 12-3, 10 kn SWL (Davit)
Helideck	: Deck Strength 9.3 T/22.2m ² (Designed to suit Sikorsky-61 or equil)



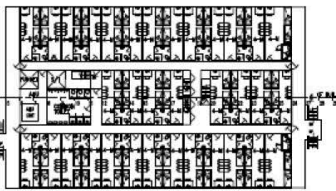
OUTBOARD PROFILE



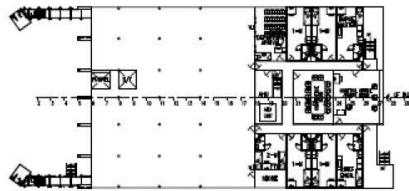
HELIDECK



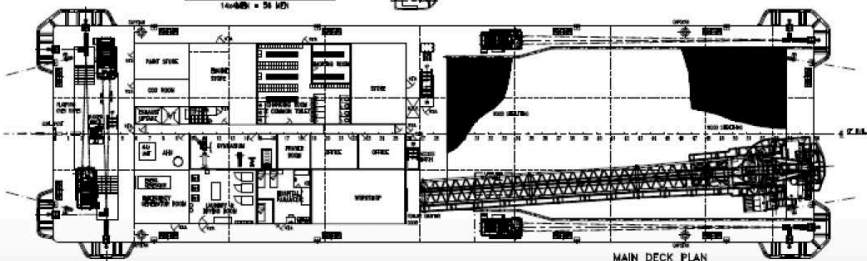
ACCOMMODATION LEVEL 01
14x40M = 56 MD



ACCOMMODATION LEVEL 02
24x40M = 96 MD



ACCOMMODATION LEVEL 03
8x10M = 8 MD



MAIN DECK PLAN