



STANDARD SPECIFICATION JACK-UP

General Description

Design / Generation	82-SD-C
Constructing Shipyard	Marathon Letourneau
Year Entered Service /	
Significant Upgrades	1979
Classification	PHRS, A1, Self-Elevating Drilling Unit
Flag	Liberian
Overall Dimensions	207.33 ft length x 176.00 ft Breadth x 20.00 ft depth
Legs	(3) 393.82ft. long, Triangular
Draft	11.2ft at load line
Accommodation	100 persons
Displacement	14692 kips
Variable Load	4,373 kips operating / 2,374 kips transit (spud cans full)
Transit Speed	up to 4 knots, @ 9,000 hp sea tug
Operating Water Depth	280 ft. designed / 280 ft. outfitted
Maximum Drilling Depth	20,000ft

Drilling Equipment

Derrick	Pyramid, Beam leg type; 160 ft high with 30 ft x 30 ft base
Hook-load Capacity	1,000,000 lbs. gross nominal capacity
Cantilever/ Drill floor	40 ft / 12 ft Port & Stbd
Drawworks	Continental Emsco C2-2000hp, 1000ft 1-3/8" Drill line
Rotary Table	Continental Emsco T3750 37.5" table opening
Top Drive	Varco Model TDS-4S Electric 500 st,1300 HP
Mud Pumps	(3) Continental FB1600 60 triplex pumps, 5000 psi rated
Solids Control	(4) Derrick Linear Shale Shakers

Power and Machinery

Main Power	(3) EMD diesel engines rated at 2,290hp at 900 rpm
Emergency Power	(1) Caterpillar D399 diesel engine rated at 1,500kw

Storage Capacities

Fuel Oil	2,118 bbls
Liquid Mud	1,756 bbls
Drill Water	4,600 bbls
Potable Water	2,983 bbls
Barite/Bentonite	3,900 cu-ft
Bulk Cement	3,900 cu-ft
Sack Storage	3,000 sacks

BOP & WELL CONTROL EQUIPMENT

BOP Ram	(1) Cameron Single "U" ram 13-5/8" 10k psi BOP
BOP Ram	(1) Cameron Double "U" ram 13-5/8" 10k psi BOP
BOP Annular	(1) Hydril GK Screw Top 13-5/8" 5,000psi annular preventer
BOP Handling	(2) Ingersoll Rand 25MT
Diverter	(1) Hydril 29" MSP 2000psi wp
Cranes	(2)Letourneau PCM 120, 50st capacity,100ft boom (1)Letourneau PCM 120, 42st capacity,120ft boom

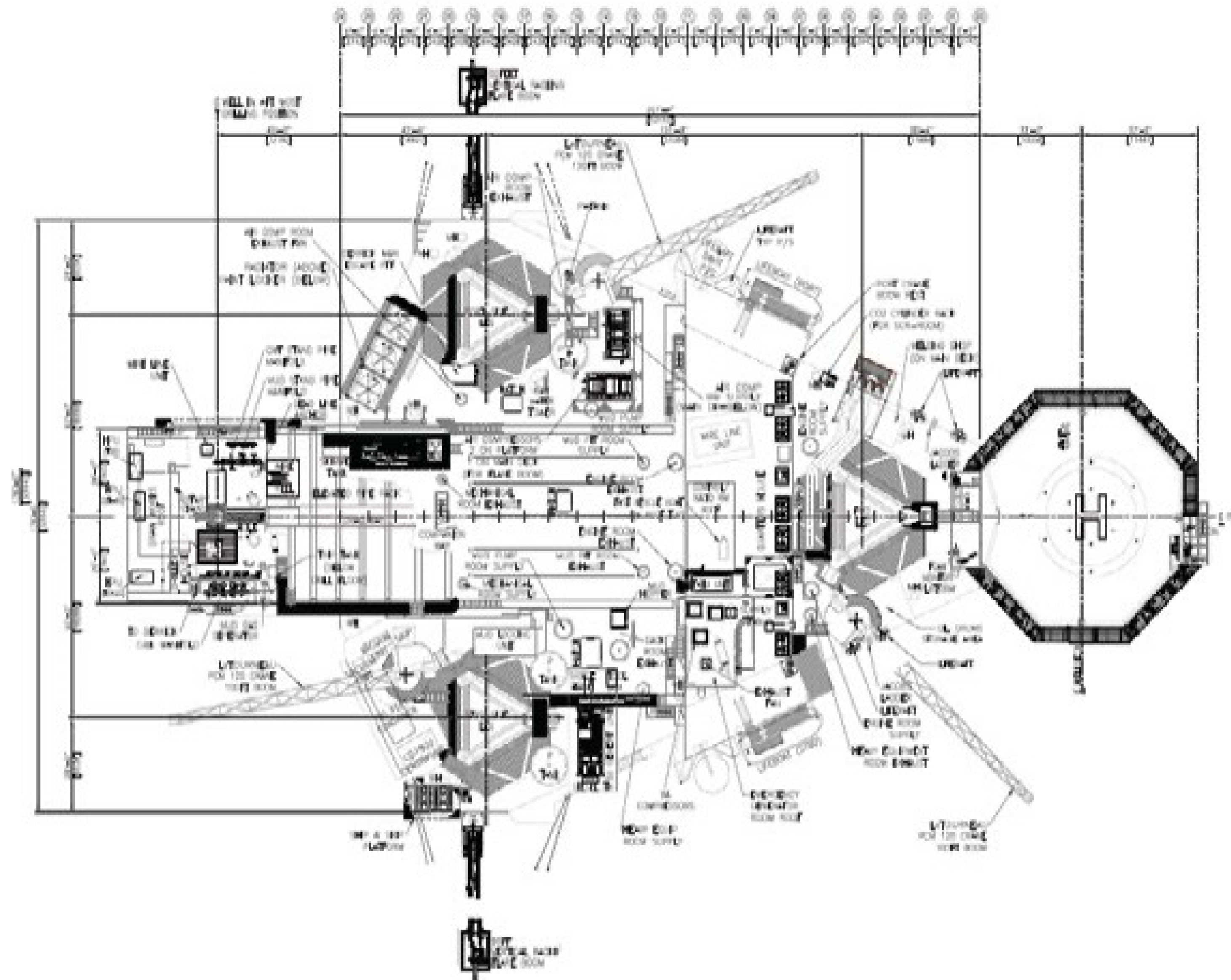
Jacking System

Man/Model Points	Letourneau/Pinion Gear
Jacking Load (Max)	12 per Leg 2491 Kips

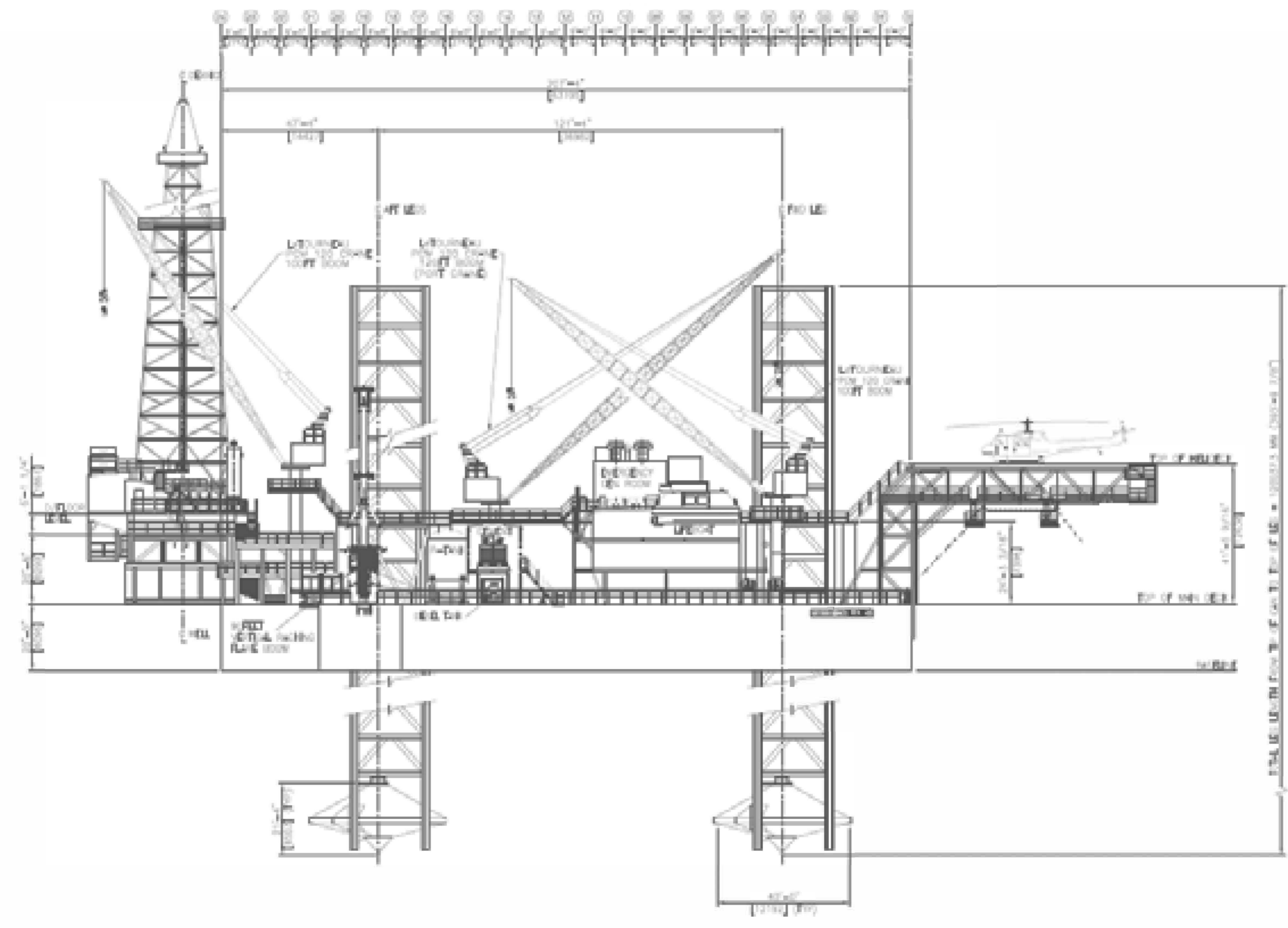
SPECIAL FEATURES & OTHER INFORMATION

Helideck	Rated for 6.8 MT Bell-412ST, CAP 437
----------	--------------------------------------

These specifications are intended for general reference purposes only, as actual equipment and specifications may vary based upon subsequent changes, the contract situation and customer needs. All equipment shall be operated and maintained at all times, in compliance with Ocean Oilfield standard operating manuals, policies and procedures, and within its stated operational limits or continuous rated capacity, in order to assure maximum operational efficiency.



TOP PLAN VIEW



OUTBOARD PROFILE