

3,200 DWT/ Platform Supply Vessel (PSV)/ DP 2



Class Notation +100A1 Offshore Supply Ship, Fire-FightingShip 1 (3200 m³/hr), Oil Recovery, *IWS, LI, RD(Liquid Mud Tanks, 3.000), LFPL(Methanol, 430C.) Side Tanks from Frame No.11 to Frame No.20). WDL(5 t/m² from Aft to Frame No.79), ECO(TOC) +LMC, UMS, DP(AA), CAC3

Principal Particulars

Flag	TBD
Year Built	2013
Place Built	Indonesia
Max Draft	5.904 m
Gross Tonnage	2,644
Net Tonnage	985
Deadweight(Max Draft)	3,176 T @ 5.904 m
Displacement	5,309 T

Design Rolls-Royce UT-755 CD

Dimensions

Length Overall	78.70 m
Beam Overall	16.00 m
Depth Moulded	7.00 m

Performance

Max Speed	12.00 kts
Economical Speed	10.00 kts

* Subject to actual weather and operating conditions

Cargo Deck

Deck Cargo Area	670.0 m ²
Deck Cargo Dimension	50.7 m x 13.2 m
Deck Cargo Capacity	1,450 T
Deck Strength	5.0 T/m ²
Reefer Point	4 x 440V

Capacities

Fuel Tank	887.0 m ³
Fresh Water	697.0 m ³
Drill Water *	1,326.6 m ³ (shared with ballast water)
Ballast Water *	1,538.4 m ³ (shared with drill water)
Mud Tank *	820.4 m ³ (shared with brine)
Brine Tank *	820.4 m ³ (shared with mud)
Dry Bulk Tank	251.5 m ³ (in 5 tanks)

* Indicates tanks with shared capacity

Discharging Rates

Drill Water/Pump	1 x 172 m ³ /hr@85 mlc
Fresh Water/Pump	1 x 150 m ³ /hr@90 mlc
Fuel/Pump	1 x 150 m ³ /hr@9 bar
Brine/Pump	1 x 100 m ³ /hr@18 bar
Liquid Mud/Pump	2 x 100 m ³ /hr@18 bar
Dry Bulk Tank	251.5 m ³ (in 5 tanks)

Accommodation

1 – Berth Cabins	8
2 – Berth Cabins	9
Total (POB)	26

Machinery & Equipment

Main Generator	Caterpillar C32, 4 x 910 kW
Emergency Generator	Lindenberg-Anlagen, 1 x 99 kW

Thruster & Propulsion

Azimuth Thruster	Rolls-Royce US205CP, 2 x 1470 kW
Bow Thruster	Rolls-Royce TT1850, 2 x 700 kW

Deck Crane

Fixed Crane	SWL 5.0 T @ 16.0 m radius
-------------	---------------------------

Mooring Equipment

Anchor	2 x SPEK Type Anchor; 2,850 kg each
Anchor Windlass	Rolls-Royce 2 x 8.0 T each @ 0-12 m/min
Tugger Winch	Rolls-Royce 2 x 10.0 T each @ 0-19 m/min
Capstan	Rolls-Royce 2 x 8.0 T each @ 0-16 m/min

Dynamic Positioning System

DP Class	Rolls-Royce ICON DP 2, Poscon joystick system
References	2 x DGPS + 1 Cyscan
MRU	3

Fire Fighting and Rescue

Firefighting System	FiFi 1
FiFi Pump	2 x 1,600 m ³ /hr
FiFi Monitor	2 x 1,200 m ³ /hr
Spray Boom	2 x 6.0 m/Fixed Nozzle
Dispersant Capacity	Nil
Foam Capacity	2.5 m ³
Rescue Boat	1 x 15 man rigid hull waterjet FRC, 160 hp, ≥8 kts
Life Raft	6 x 15 man
Life Buoy	12
Life Jacket	44

3,200 DWT/ Platform Supply Vessel (PSV)/ DP 2

CARGO CAPACITY PLAN

Tank No.	Volume m ³	Fuel m ³	Fresh Water m ³	Ballast Water m ³	Mud m ³	Brine m ³	ORO m ³	Drill Water m ³	Dry Bulk m ³	Methanol m ³	Base Oil m ³
		SG 0.900	SG 1.000	SG 1.025	SG 3.000	SG 2.800	SG 1.000	SG 1.000	SG 2.160	SG 0.791	SG 0.830
*1	33			33				33			
2	72.3		72.3								
3	72.3		72.3								
*4	74.4			74.4				74.4			
*5	95.8			95.8				95.8			
*7A	60			60				60			
*7B	59			59				59			
*8	85.7			85.7				85.7			
*9	85.7			85.7				85.7			
*10	79.2			79.2				79.2			
*11	79.2			79.2				79.2			
12	54.6		54.6								
13	54.9		54.9								
14	51		51								
15	51.3		51.3								
*16	77.5			77.5				77.5			
*17	77.5			77.5				77.5			
18	26.3		26.3								
*19	62.5		62.5								
*20	170.4		170.4	170.4				170.4			
*22	64.1	64.1					64.1				
*23	71.2	71.2					71.2				
24	211.8			211.8							
25	81.4		81.4								
30	19.6	19.6									
31	19.6	19.6									
33	15.7	15.7									
34	82.1	82.1									
35	82.1	82.1									
36	82.1	82.1					82.1				
37	82.1	82.1					82.1				
*38	82.1	82.1					82.1				
*39	82.1	82.1					82.1				
*50	102.1	102.1			102.1	102.1					
*51	102.1	102.1			102.1	102.1					
*52	102.7				102.7	102.7	102.7				
*53	102.7				102.7	102.7	102.7				
*54	102.7				102.7	102.7	102.7				
*55	102.7				102.7	102.7	102.7				
*56	102.7				102.7	102.7	102.7				
*57	102.7				102.7	102.7	102.7				
60	50.3					50.3					
61	50.3					50.3					
62	50.3					50.3					
63	50.3					50.3					
64	50.3					50.3					
*66	90.3			90.3				90.3			
*67	90.3			90.3				90.3			
*68	84.3			84.3				84.3			
*69	84.3			84.3				84.3			
SUM		887	697	1538.4	820.4	820.4	616.2	1326.6	251.5	135.3	328.4

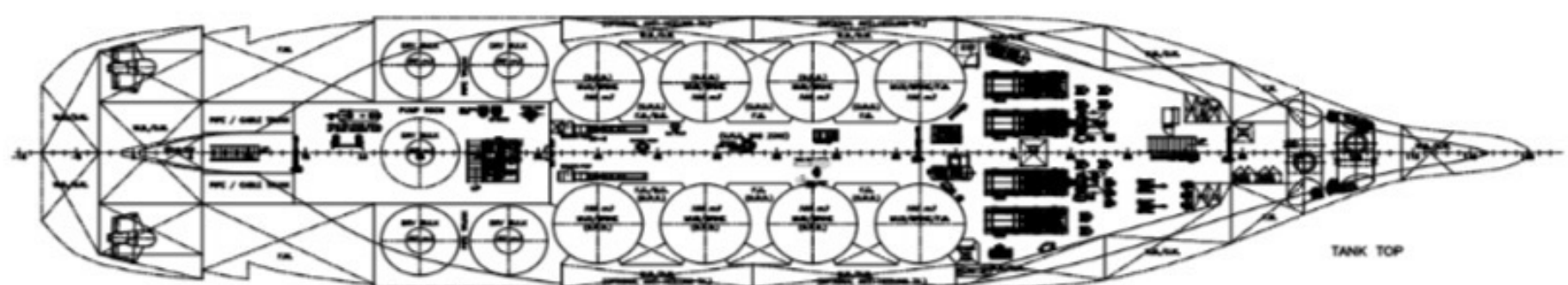
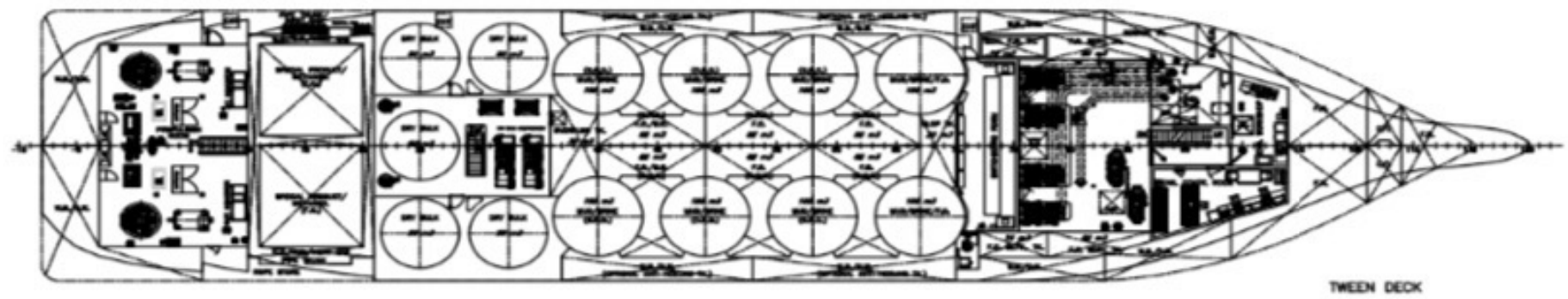
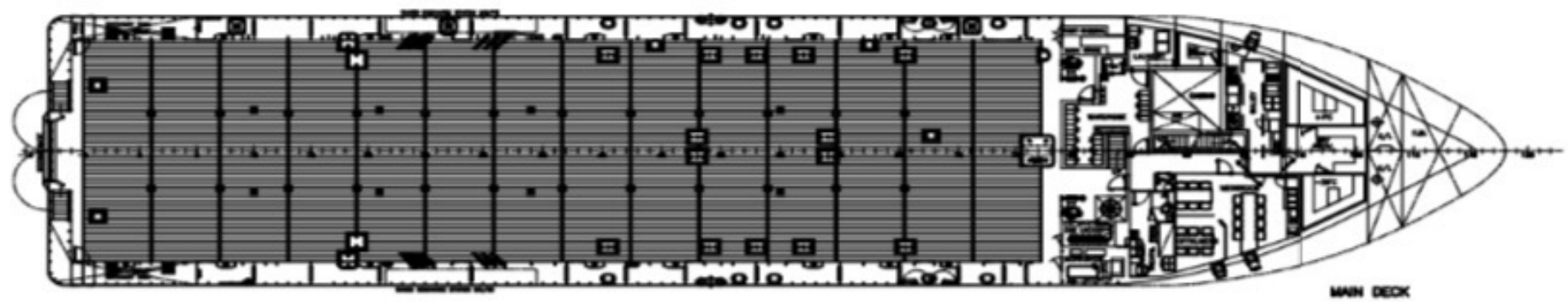
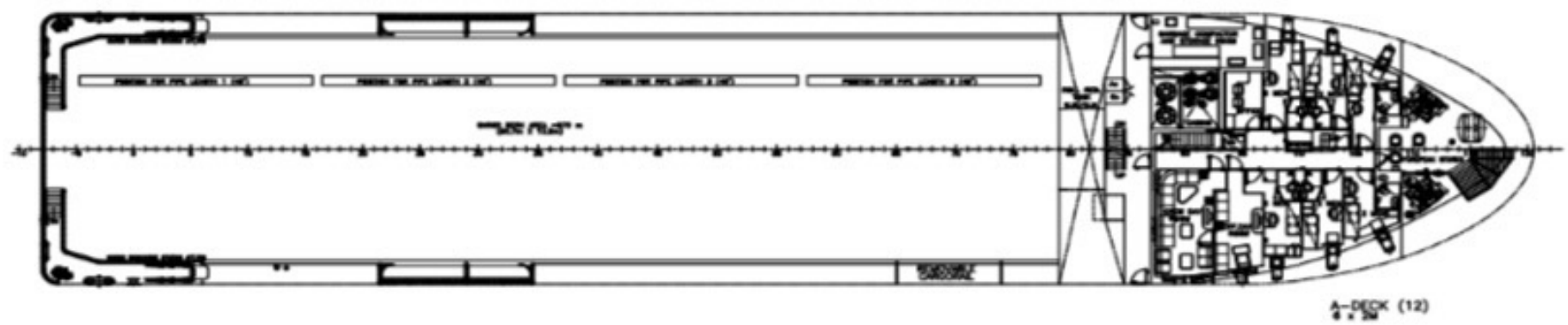
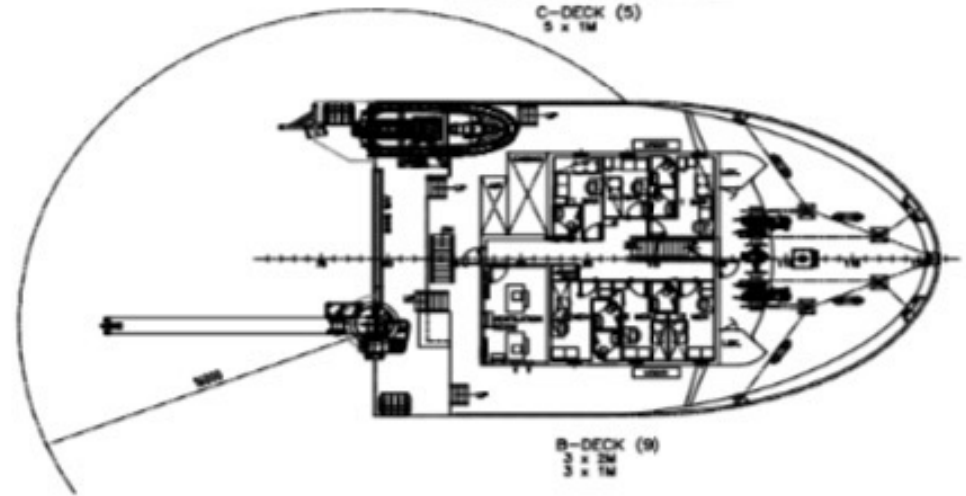
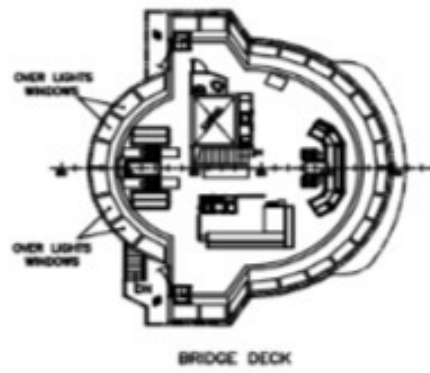
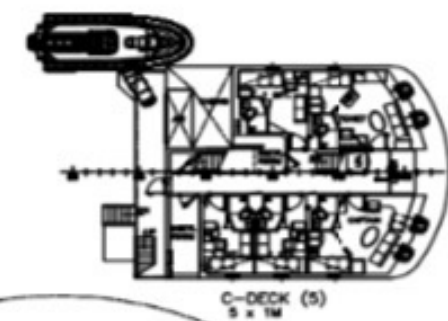
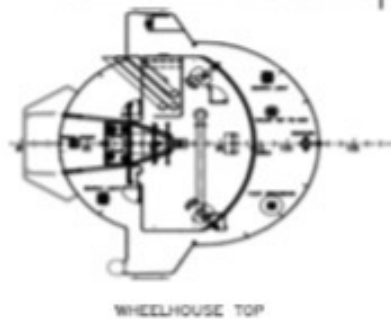
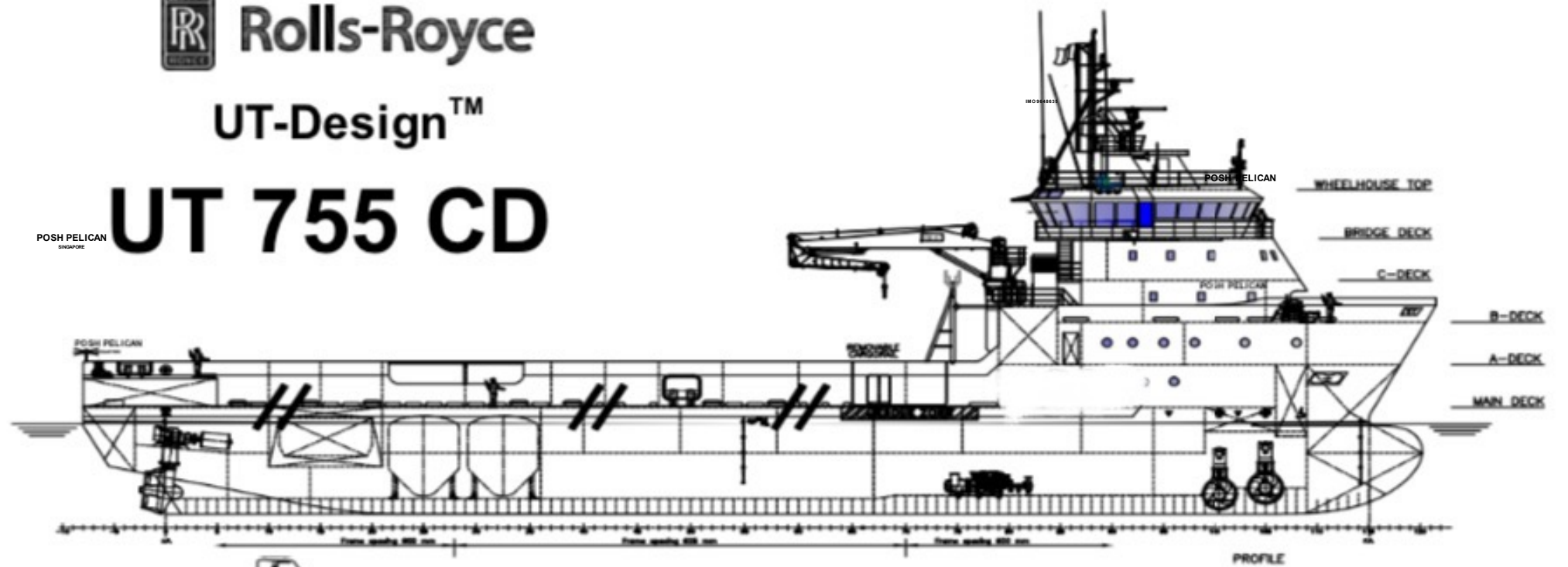
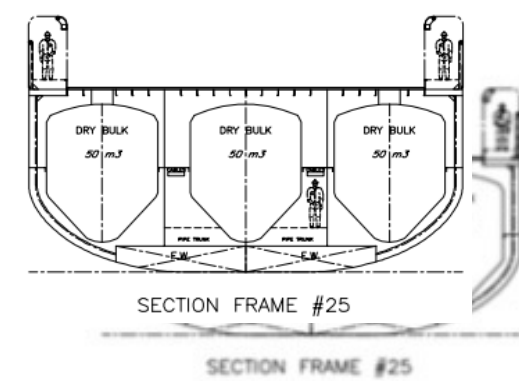
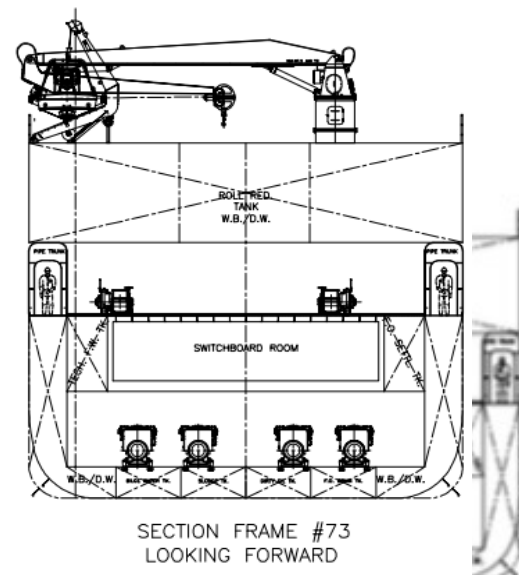
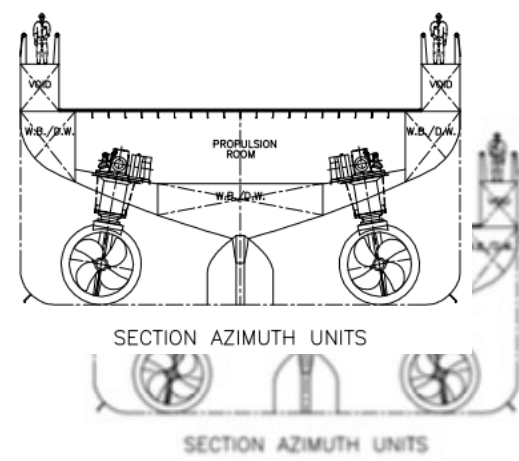
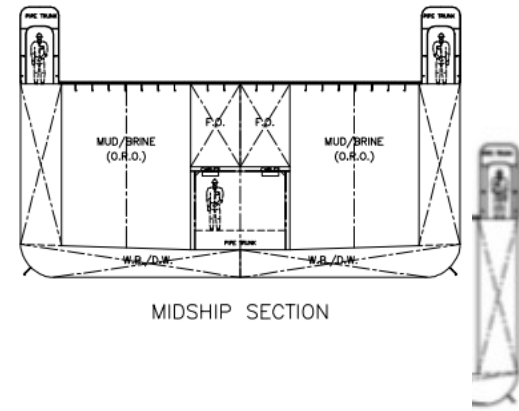
Particulars given herein are believed to be correct but not guaranteed. Owner reserves the rights to amend specifications without notification.

3,200 DWT/ Platform Supply Vessel (PSV)/ DP 2



UT-Design™

UT 755 CD



MAIN PARTICULARS

L.O.A.....	APPROX. 78.70 m
L.P.P.....	70.10 m
BREADTH MLD.....	16.00 m
DEPTH MAIN DK.....	7.00 m
DESIGN DRAFT.....	5.10 m
MAX DRAFT.....	APPROX. 5.80 m

Class notation:
 Det Norske Veritas +SAT, SF, ES, DRU, HLD, S, DYNPOS AU/R, CLEAN DESIGN,
 LFL, SIS, COMP VDI, NAUT OSVA, FIRE FIGHTER 1, OLRG