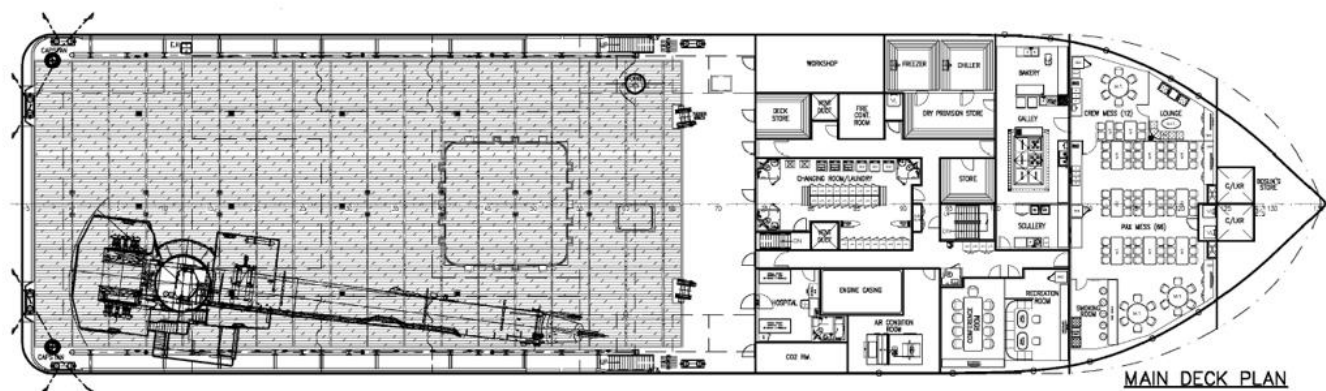
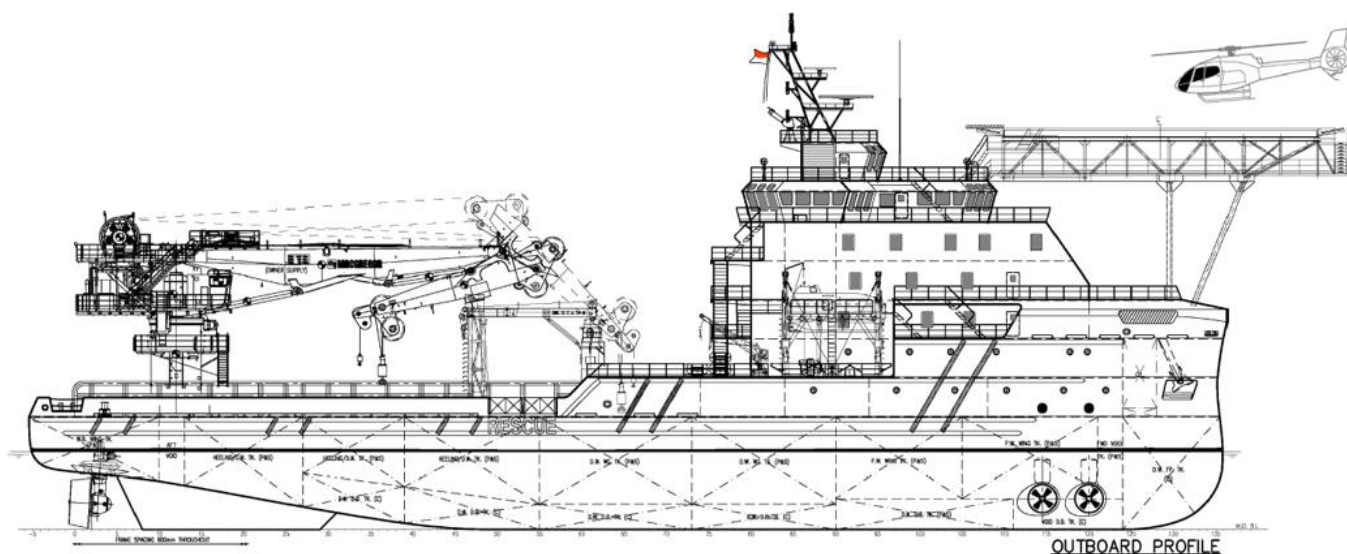


TWO 85M 6000BHP DP2 SUBSEA SUPPORT MAINTENANCE VESSELS

AVAILABLE FOR PRIVATE SALE UNDER CONSTRUCTION



MAIN PARTICULARS

Length Overall	: 85.00 M
Length BP	: 77.750 M
Breadth Moulded	: 22.00 M
Depth Moulded	: 8.00 M
Draft Moulded	: 6.20 M
Trial Speed	: ~12.5 knots
Moon Pool	: 8.00M x 8.00M
Heli-Deck	: Installed based on Sikorsky S61
Class Notation	: ABS ∇ A1 $\text{\textcircled{E}}$ Offshore Support Vessel (Supply-HNLS, FFV1), SPS, ACCU, RW, CRC, +AMS, +DPS-2

CARGO CAPACITIES

Clear Deck Area	: 800 M ²
Deck Cargo	: 800 T
Deck Loading	: 7.5 T/M ²
Fuel Oil	: ~1150 M ³
Fresh Water	: ~740 M ³
Drill Water/Water Ballast	: ~1750 M ³
Heeling	: ~450 M ³

PROPULSION /MACHINERY

Main Engine	: 2 X 3000 BHP, Niigata
Propulsion system	: 2 x Azimuth thruster
Bow Thruster	: 2 x 800KW, transverse type Kawasaki, Approx. 12T CPP
Main Generator	: 3 x 940 KW, diesel driven
Shaft Generator	: 2 x 1500KW, ABB
Emergency Generator	: 1 x 192kW, 415V/50Hz, Cummins

CARGO DELIVERY RATES

Fuel Oil	: 2 x 150M ³ /hr @ 75M head
Fresh Water	: 1 x 150M ³ /hr @ 75M head
Drill Water	: 1 x 150M ³ /hr @ 75M head
GS/Fire	: 1 x 100M ³ /hr @ 75M head
Sludge	: 1 x 5M ³ /hr @ 29M head
Ballast	: 1 x 200M ³ /hr @ 40M head

ACCOMMODATION

8 x 1 man cabin	: 8 men
40 x 2 men cabin	: 80 men
9 x 4 men cabin	: 36 men
Total	: 124 men
1 x hospital	: 2 men
Chiller	: ~35 M ³ (approx)
Freezer	: ~35 M ³ (approx)

Offices • Mess Rooms • Fitness Room • Galley

LIFE SAVING EQUIPMENT

Life Raft	: 3 x 20 men
Life Buoy-ring	: 12 sets
Lifejackets	: 155 sets
Life Boat	: 2 x 60 men c/w davits
Fireman Outfit	: 6 sets
EEBD	: 8 units
MOB-Light Smoke Signal	: 4 sets
First Aid Kit	: 1 set
Air Breathing Apparatus	: 124 sets

DYNAMIC POSITIONING SYSTEM

Meets the DPS-2 class notation of ABS

- 2 x DGPS
- 1 x Laser Reference System
- 1 x Radar Reference System
- 3 x wind sensor
- 3 x gyro sensors
- 2 x UPS
- 2 x printer (alarm log and normal printer)
- 1 x FMEA

NAVIGATION EQUIPMENT

X-band radar range 96NM	: 1 set
S-band radar range 96NM	: 1 set
Echo Sounder	: 1 set
GPS Plotter	: 1 set
Gyro Compass	: 3 sets
Magnetic Compass	: 1 set
Autopilot & Steering Gear	: 1 set
Weather Facsimile Receiver	: 1 set
Doppler Speed Log	: 1 set
AIS	: 1 set
MF/HF Transceiver (GMDSS)	: 1 set
Satellite EPIRB (GMDSS)	: 1 unit
2-way Portable VHF radios (GMDSS)	: 3 units
SART	: 2 sets
Navtex Receiver (GMDSS)	: 1 unit
Anemometer	: 3 units

SUPPLY & DRAINAGE PLANT

FW Hydrophore Plant & pump	: 2000L/ 2x15M ³ /hr @ 60M head
SW Hydrophore Plant & pump	: 2000L/ 2x15M ³ /hr @ 60M head
Sewage Holding & Treatment System	: For 124 persons
Freshwater Maker	: 2 x reverse osmosis type of 30t/day
Oily Bilge Water Separator	: 1x 1.0M ³ /hr with oil content <15ppm
Hot Water Calorifier	: 2 x 80KW of 1000L c/w 2 circulating pumps

DECK / AHT EQUIPMENT

Windlass	: 1 x electro hydraulic type of 16T @ 12M/min for 58mm dia. chain
Capstan	: 2 x electro hydraulic type of 10T @ 15m/min
Anchor	: 2 x high-hold type, stowed in anchor-pockets each of 3240kg.
Tugger Winch	: 2 x electro-hydraulic type of 10T @ 15m/min
Cargo Rail	: 300mm N.B. heavy pipes shall be provided on main deck (P&S) Approx. 2500mm to top of pipes
Main Crane	: 1 x electro hydraulic driven crane of 100T @ 15M with AHC function
Deck Crane	: 1 x marine crane of 5T SWL @ 14.0M
Gangway	: 1 x aluminium gangway about 6.0M

INTERNAL FIRE FIGHTING SYSTEM

CO2-Fire Extinguishing & Smoke Alarm System	: Provided in engine room
Fixed Pressure Water Spraying or Water-mist Fire Extinguishing System	: Provided Main Engine Room
Firemain	: 1 x Firemain, 12 x hydrants
Fire Blankets	: 2 off
Fire Axe	: 1 off

EXTERNAL FIRE FIGHTING SYSTEM

External FiFi-1 c/w water spraying system

Fire Monitor	: 2 x 1200 M ³ /hr @ 120m length / 50m height
Fire Pump	: 2 x 2000 M ³ /hr @ 14 bar
Sea Chests	: 2 x independent type
Foam tank capacity	: 20 M ³
Dispersant Capacity	: 20 M ³