

Walk to Work/ Accommodation Vessel with ROV & Subsea Survey Capabilities - DP 2 Class



Accommodation vessel, including W2W gangway with hydraulic pedestal, ROV and subsea survey capabilities

Design: UT 717 CDX

Year of built: 2018

Class: DNV +1A1, EO, SF, DK(+), HL(2.8), LFL*, DynPos AUTR, Clean Design, COMF-V(3), NAUT-OSV(A), Ice-C, SPS

PRINCIPAL DIMENSIONS

LOA:	86.00 m
Lpp. :	76.20 m
B mld.:	18.50 m
Max draft PSV/SPS:	6.10 m/5.4 m
Deck area:	Approx 290 m2 uncovered/ Approx 210 m2 covered
Deadweight:	2732 t
Gross tonnage:	4703 (GRT) 6031.5 t
Displacement (SPS)	

TYPICAL WORK

- W2W
 - Accomodation: 100 persons
 - Subsea survey
 - ROV
 - Air & SAT Diving Operations
- *There is no diving system installed on board.

Technical specification

ACCOMMODATION / VESSEL FACILITIES	
The accommodation facilities provide for a number of 100 persons including crew:	
14 x single client cabins (in case of full vessel)	
32 x double client cabins (in case of full vessel)	
Connected sanitary facilities in all cabins	
2 x office	
1 x conference room	
4 x dayroom	
1 x gymnasium	
1 x outdoor swimming pool	
1 x large mess room	
3 x wardrobe	
1 x hospital	
2 x stores	
1 x large store/workshop	
TV in all cabins	
8/4 Mb/s possible	

CARGO TANK CAPACITIES	
Drill Water:	2000 m3
Fresh Water:	711 m3
Fuel Oil:	1021 m3
Special prod/Methanol:	190 m3
Base oil	280 m3
Dry bulk	265 m3
Note: All tanks can not be filled simultaneously	

CARGO DECK	
Cargo deck area:	Approx 290 m2 uncovered/ Approx 210 m2 covered
Deck Load:	5t per m2
Good space for 20' containers	
- ASFA (Automatic Sea Fastening system)	

MEZZANINE DECK	
- 70m2 permanent mezzanine deck for LARS/ ROV and RIB (Diving)- 5t per m2	

CRANES	
AHC Crane:	
- SWL: 20t@20m - single line / wire length 1200m, wire diameter 32mm	
Highspeed constant tension	
Ship-Ship certified	
Deck cranes:	
1x Foldable crane lifting approx. 1t/10m	
1x HS Marine AKC 100/21 HE4 foldable telescopic knuckleboom 3.26t/15.95m, 2.35t/20.15m	

WALK-TO-WORK GANG WAY	
-Type: Uptime Gangway	
- Gangway mean length from pedestal:	19.40m
- Minimum outreach from pedestal:	15.40m
- Maximum outreach from pedestal:	23.40m
Landing solutions: Elephant foot or Bumper mode	

MAIN PROPULSION/ THRUSTERS	
Main propulsion:	
2x 750 AGHC-KP50H 1920kW	
Bow thrusters:	
2 x TT 1850 DPN CP 760 kW	
1x swing up azimuth thruster TCNS 73/50-180 CP	
Stern propulsion:	
2x TT1650 DPN CP 590 kW	

MAIN GENERATOR SETS	
Engines:	
2 x RRM Bergen C25:33L9 CPD- 2880 kW each	
Generators:	
2 x Aux.generators- 500 ekW each	
1 x Emergency Generator- 165 ekW	
2 x Shaft generators- 2400kVA	

DYNAMIC POSITION / REFERENCE SYSTEM	
Type:	Marine Technologies
Class:	Definition: DYNPOS AUTR.
ERN: 97.97.96.89	
2 x GDPS	
2 x Cyscan	
Radascan	
Radius scan - OPTION	

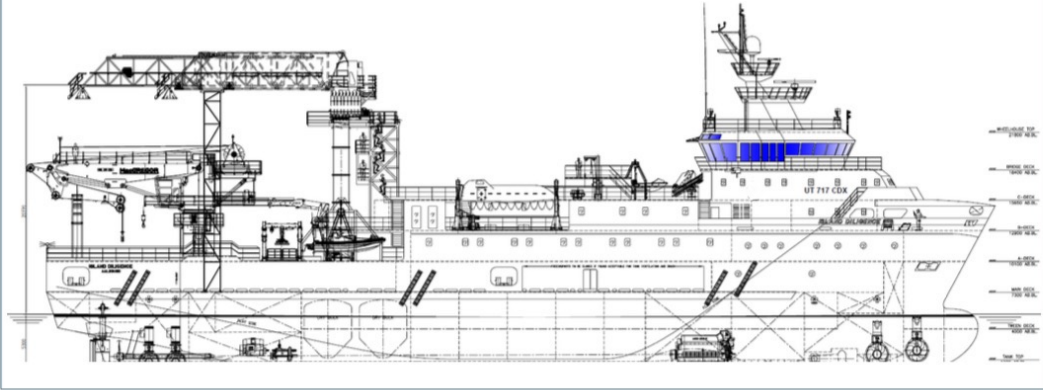
SAFETY EQUIPMENT	
The life-saving appliances provide for a total number of 100 persons.	

ANTI ROLL	
Active anti-roll system Frank Mohn AS- 600m3/h	
Passive anti-roll system Rolls-Royce- 1x passive tank 153m3	

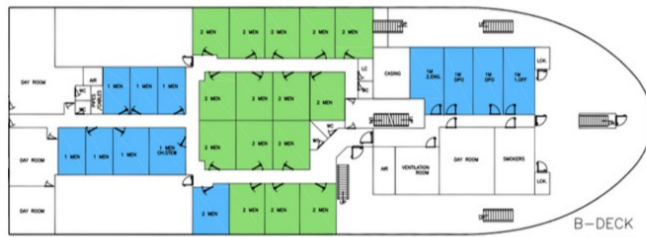
WATER PRODUCTION	
Osmosis system 2x 20m3/24hrs	

UTILITY STATIONS	
Deck utility cabinet for ROV systems/diving equipment	

PROFILE

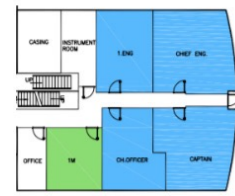


CABIN PLAN

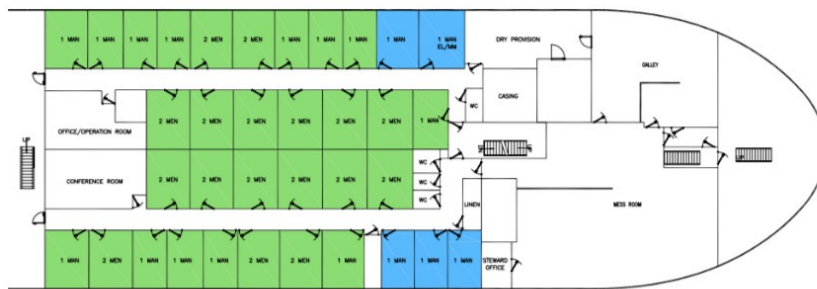


B-DECK

11 1-MAN CABIN MARITIME CREW
 1 2-MAN CABIN MARITIME CREW
 15 2-MAN CABIN CLIENT CREW
 TOTAL 43 BEDS



C-DECK



A-DECK

5 1-MAN CABIN MARITIME CREW
 13 1-MAN CABIN CLIENT CREW
 17 2-MAN CABIN CLIENT CREW
 TOTAL 52 BEDS

Gallery



Vessel Presentation

Slide 3:	Main particulars
Slide 4:	Track record
Slide 5:	Vessel power and engine management
Slide 6:	Fuel indications
Slide 7:	Reference Systems
Slide 8-17:	Gangway operations
Slide 18:	Boat landing
Slide 19-23:	Crane and deck
Slide 24-26:	Client facilities and cabin plan Interior
Slide 27-44:	description with photos Vessel
Slide 45:	Network / Internet



Class: DNV +1A1, EO, SF, DK(+), HL(2.8), LFL*, OILREC, DYNPOS AUTR, CLEAN DESIGN, COMF-V(3), NAUT-OSV(A), ICE-C, SPS

Main particulars

Design	UT 717 CDX (Kongsberg)
Built	2018
Length	86,00 m
Breadth	18,50 m
Max draft	5,40 m
Deadweight	2.730t
Gross tonnage	4.764t
IMO Number	9759903
Deck area	Approx. 290 m ² uncovered / 210 m ² covered
Accommodation	100 POB
Gangway system	UPTIME 23.4
Crane	MacGregor 20t AHC subsea

W2W Track Record



Client	Project	Landings	Transfers
SHL	Trianel Borkum West 2	421	1 917
Total DK	Tyra	16	94
Boskalis	Horns Rev 3	64	255
Trianel	Trianel Borkum West 2	1 476	6 120
Global Marine	Kriegers Flak	1 841	9 116
Vattenfall	DanTysk / Sandbank	600	1 842
Prysmian	St Nazaire OSS	90	866
SBM	Guyana FPSO	10	2
ODE	Tolmouth/Blythe	114	902
GE/TenneT	DolWin Gamma	39	1 019
Equinor	Hywind Tampen	523	2 092
Asso.subsea	St.Brieuc	899	4 218
Asso.subsea	Vesterhav	1 020	4 909
Van Oord	Baltic Eagle	580	3 255
	Total pr 06.12.2023	7 694	36 607

Vessel power and engine management

Engines:

2 x RRM Bergen C25:33L9 2880kW each – Generator set

Main propulsion:

2 x 750 AGHS-KP50H – 1920kW each

Bow Thrusters:

2 x RRM Kameva Ulstein TT 1850 DPN CP – 760kW each

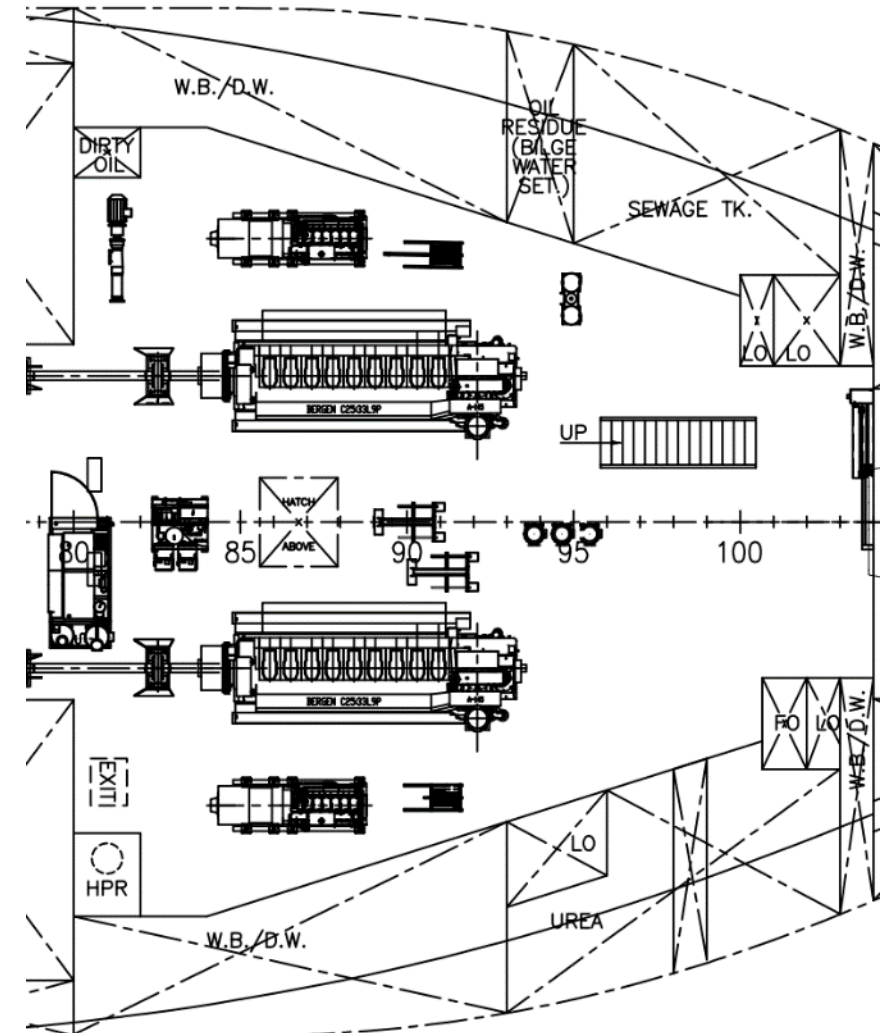
1 x RRM Ulstein Aquamaster TCNS 73/50 – 180 CP – 883kW

Stern Thrusters:

2 x RRM Kameva Ulstein TT 1650 DPN CP – 590kW each

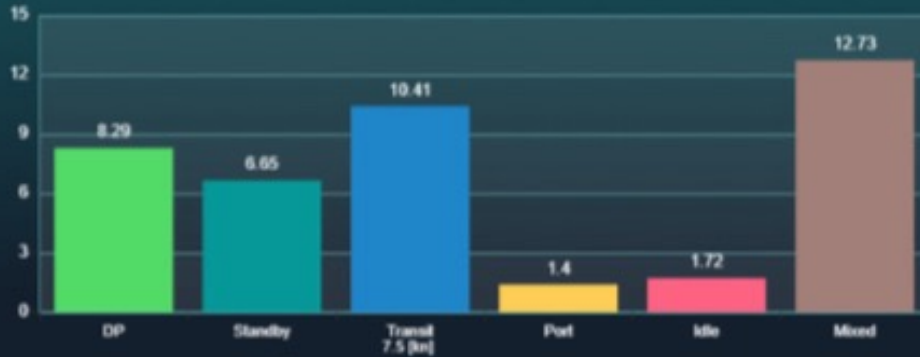
Engine Management

- 2 Generators available to provide power to all consumers incl. propulsion plant and gangway
- Load dependent automatic start/stop of generators controlled by Power Management System (PMS)
- Means of control and priority of consumers in PMS to ensure secure and continuous operation of station keeping system and gangway implemented



Fuel indications

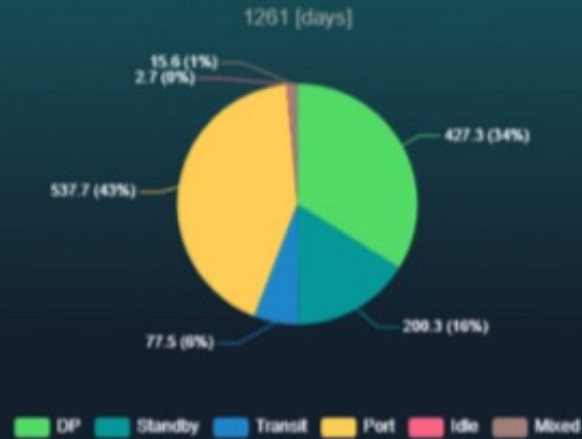
Average fuel usage (baseline) [tons/day] and Speed Over Ground [knots]



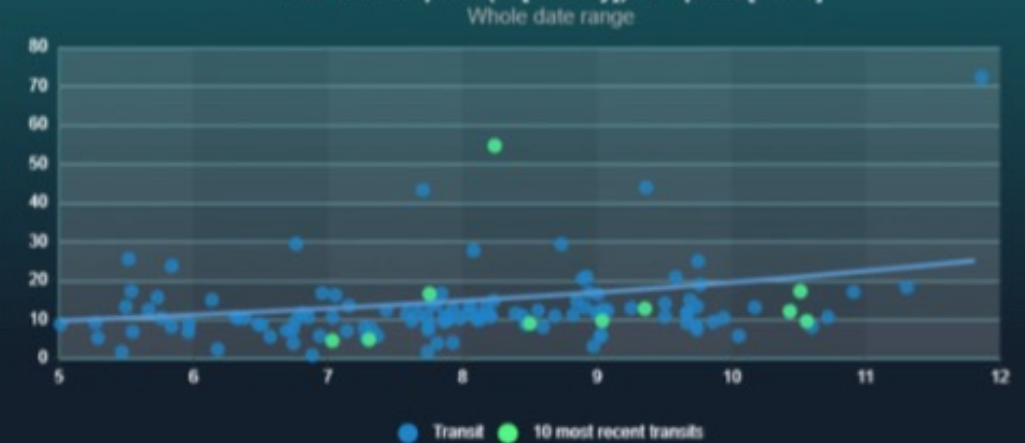
Vessel information

IMO number:	9300000	MMSI number:	230000000
Vessel Type:	CSV	Accommodation:	100
Year Built:	2018	Bollard Pull [mt]:	
LOA - Length over All:	86	Crane [mt]:	
Beam:		Design:	UT 717 CDX
DWT [mt]:	4 200	Call Sign:	
Deck [m2]:	290	Class Id No:	
Break Horsepower [BHP]:		Class:	
Engines/Generators		Propulsions	

Days in different activities



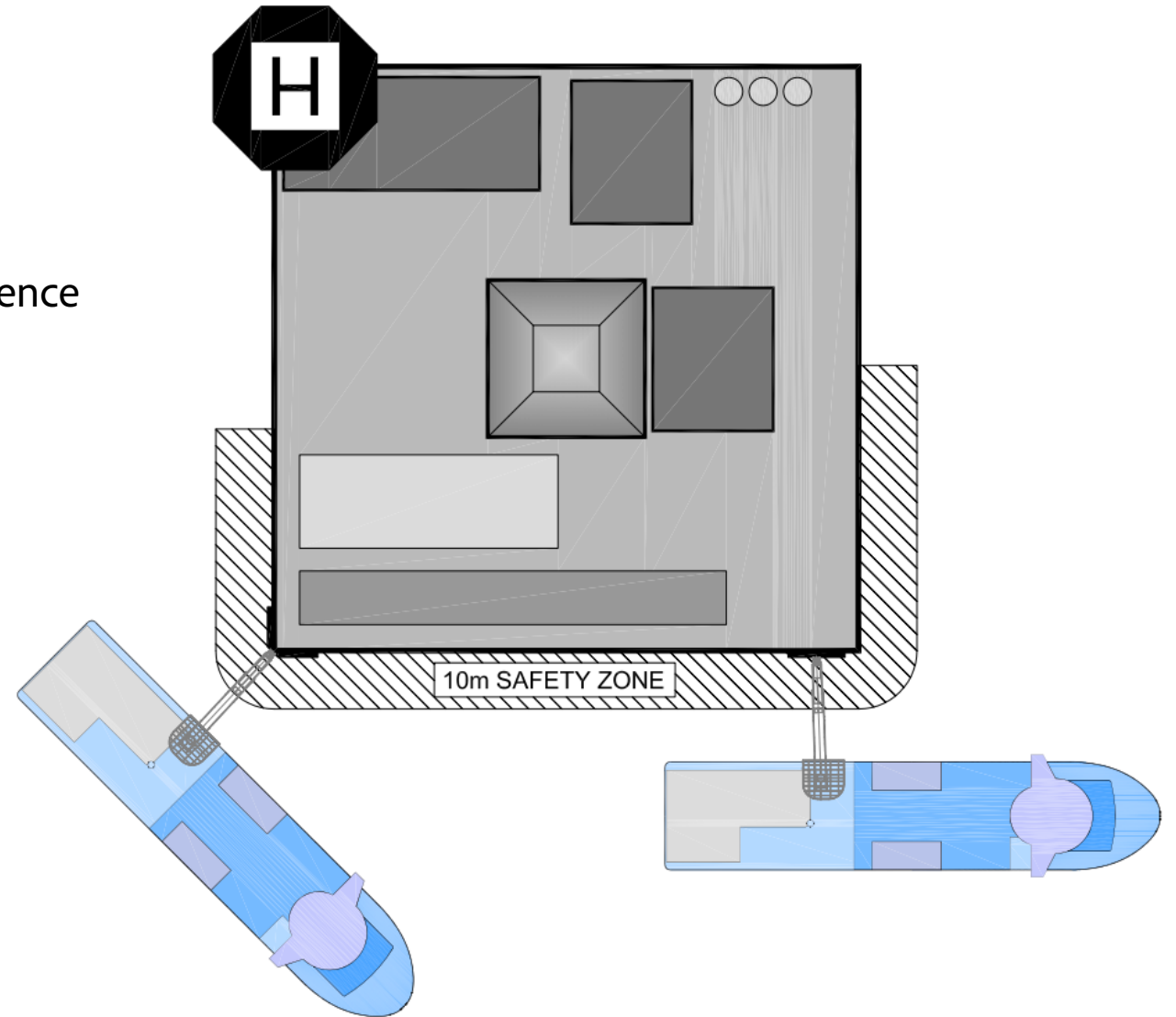
Fuel consumption (in [ton/day]) vs Speed [knots]



Reference systems

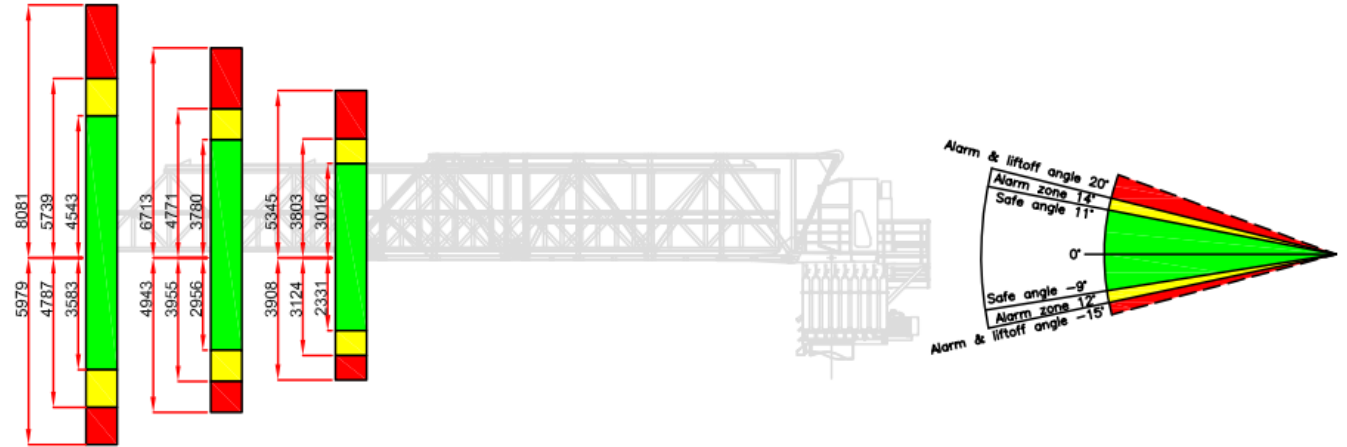
The vessel is equipped with the following DP and reference systems:

- DP 2 – DYNPOS AUTR from Marine Technologies
- 2 x DGPS
- 2 x CyScan
- RadaScan



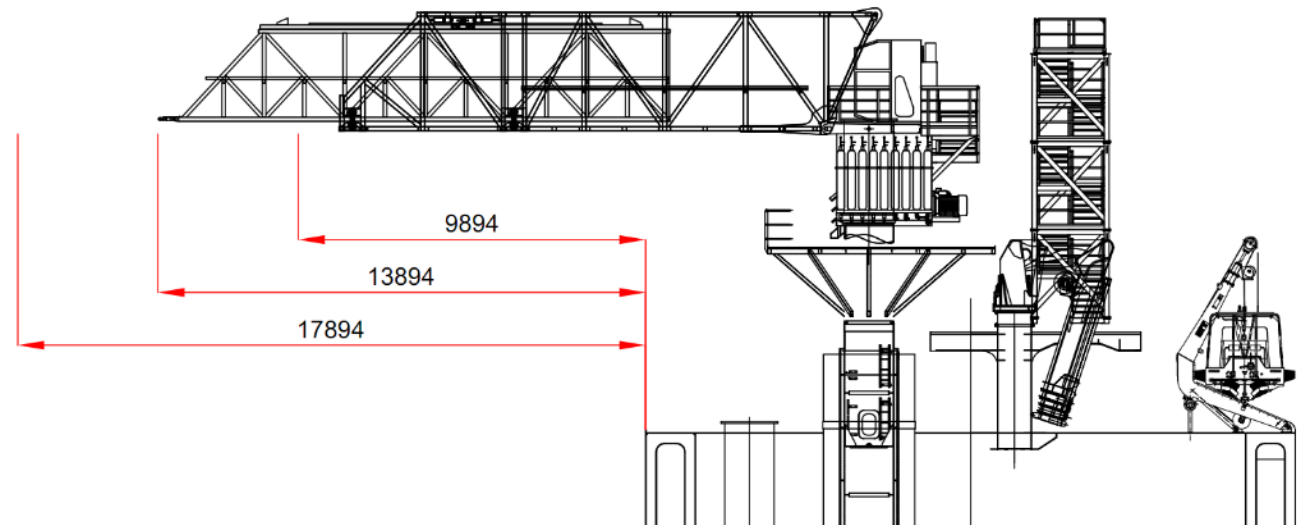
Gangway operational area

The green area shows the safe work angle of the gangway.
The green area is 11° upwards and 9° downwards.



The numbers shows the length of the gangway from the ships side

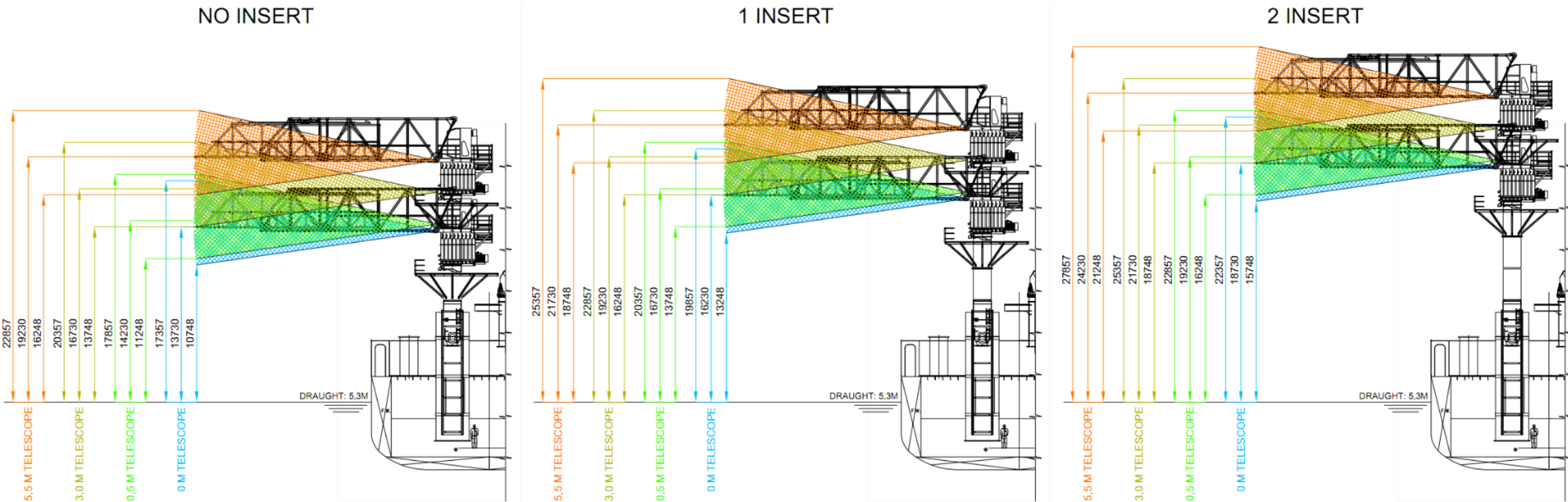
- Approx. 9,9m minimum outreach from ship side
- Approx. 13,9m start position
- Approx. 17,9m maximum outreach from ship side



Stepless adjustable pedestal with inserts

Pedestal specs:

- 5,5m stepless adjustment
- 2 inserts à 2,5m each can be fitted



Each telescopic height is given 3 numbers: 11 degrees upward inclination on gangway – flat – 9 degrees downward inclination on gangway

Time estimates

- **Set up DP-mode:** Perform DP trial at Wind Farm arrival – approx. 1 hour (Only upon arrival, arrival to be part of planning)
- **Manoeuvre from 100 m distance to WTG/DP location:** Enter 100m zone and connect the gangway – 10-15 minutes
- **Gangway connection:** When vessel is in transfer position, connection time with gangway will be 1-3 min
- **Transfer personnel, 4 persons ready on the gangway entrance:** Transfer of personnel will perform according to Charterer's requirements. On previous operations the vessel operated with 2 pax per minute, may be increased.
- **Disconnect the gangway/prepare for cargo transfer:** Disconnecting and parking the gangway: 1 min, and prepare crane operations (Operator moves to crane) – approx. 3-5 minutes
- **Transfer cargo:** Crane operations will be performed according to Charterer's requirements and will depend on amount and weight of cargo.
- **Move to 100 m distance from the WTG:** Max 5 minutes

Operation criteria – Weather



- Significant wave height: Guidance Hs = 2,5
- Wind speed: Guidance Vw = 16-20 m/s
- Current speed (surface): Guidance Vc = 1,5 knots

*Subject to conditions
(wind, current, swells, heading, access etc)*

Landing Solutions

Cone ("Elephant foot")



Bumper front



The elephant foot is pressing against the landing platform with a force of 2,8 tons

Customised bumper front

Bumper fronts can be modified for optimal connectivity if special requirements on your project. Examples:



Borkum West



Not used

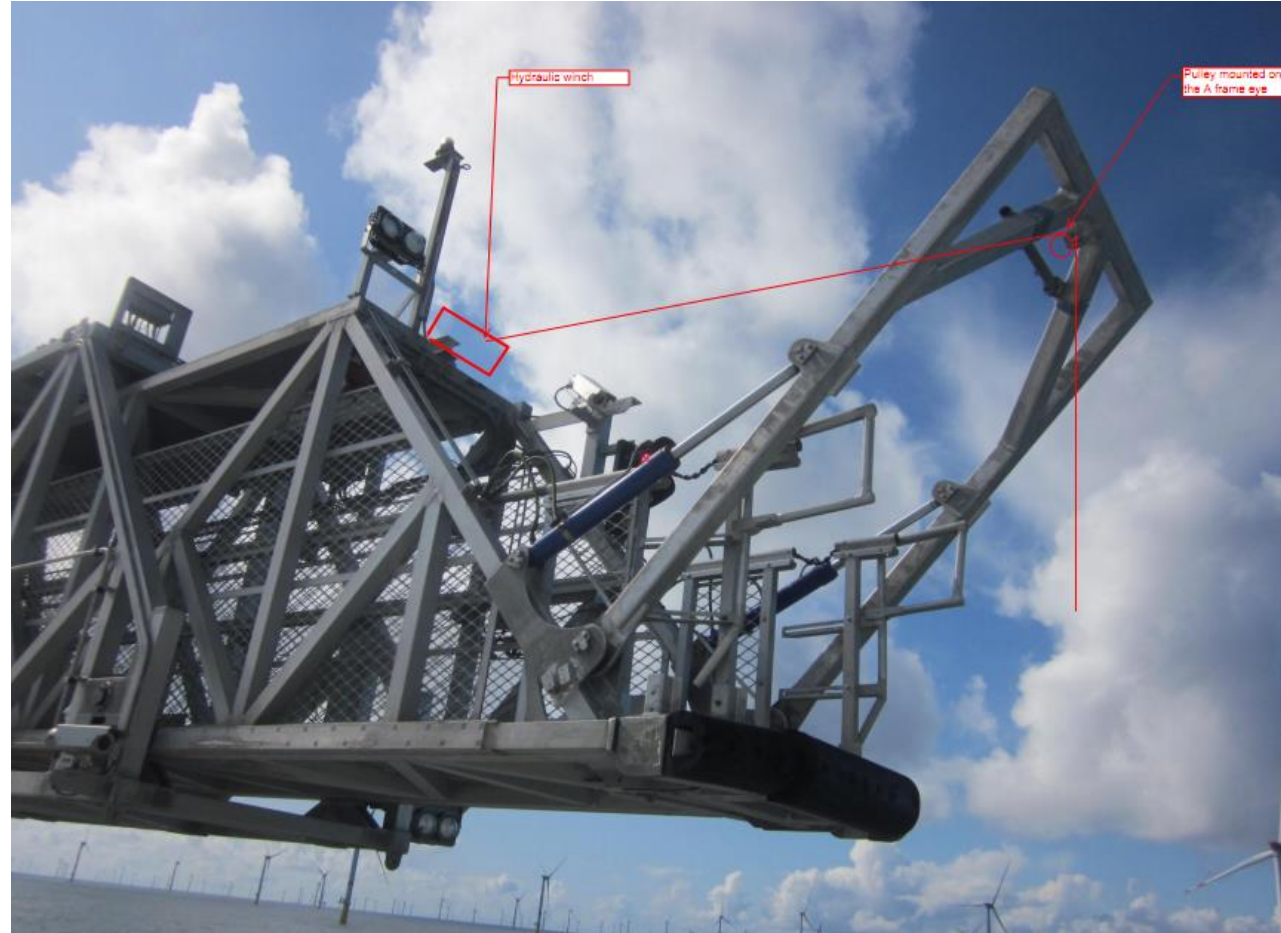


Baltic 2
Sandbank



Gode Wind

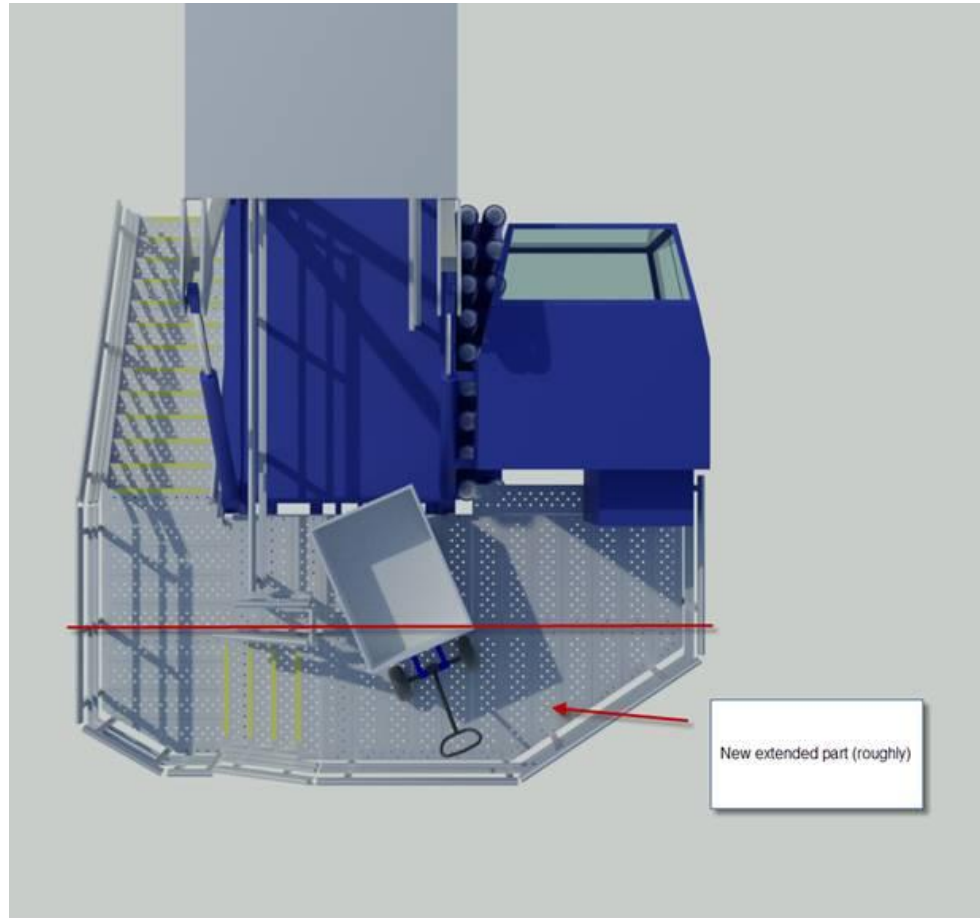
Lifting cargo with A-frame on Gangway



- Up to 500kg lift (recommended max 350kg in most weather conditions due to winch capacity and gangway structure)
- 3D compensated
- Can only be used in bumper mode



OPTION Upgrade Gangway platform (More space)



- 4-5 days to fit in port
- Lead time production 3-4 weeks

OPTION Trolley system

Trolley system being used onboard today

Specification:

Footprint: 1.672 x 797mm

Weight 200 kg

Payload Drive 500 kg

Inclination DC motor

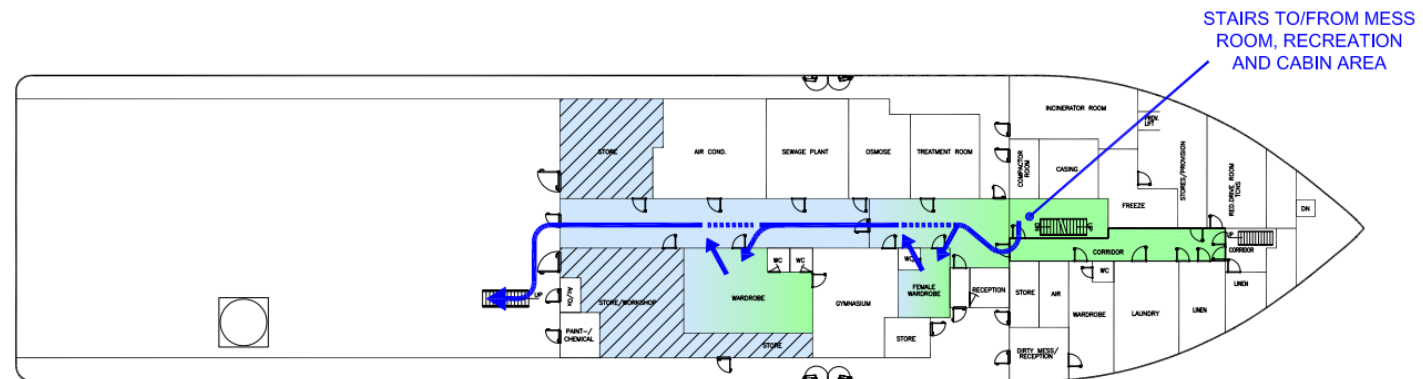
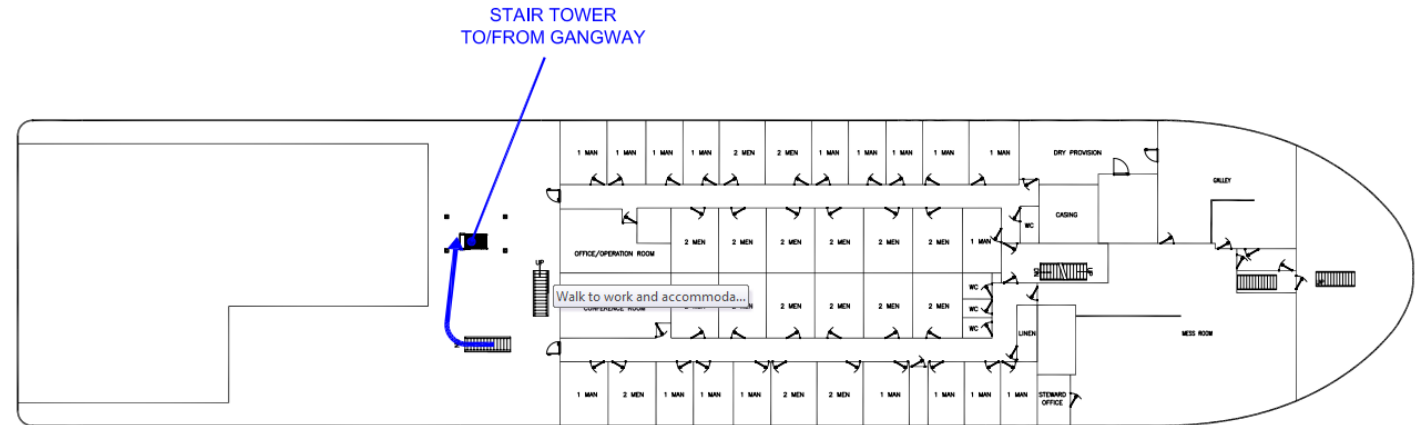
Experience: 10 degrees, reduced payload

Pull bags!



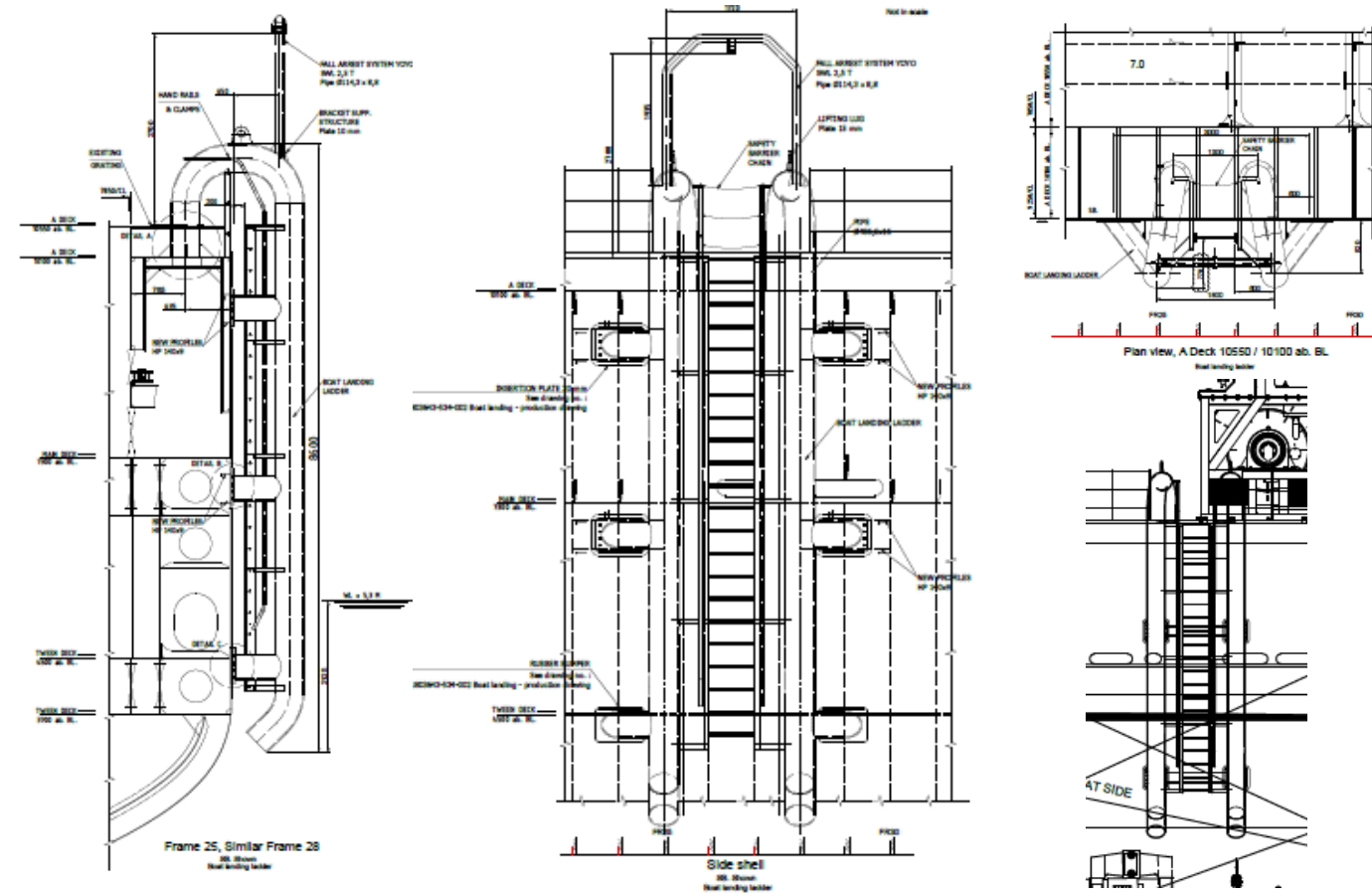
Technician Workflow

- Easy access from recreational area are to the wardrobe
- No passing through recreational area with work clothes
- Outer staircase to access gangway without entering the Main deck



Boat landing

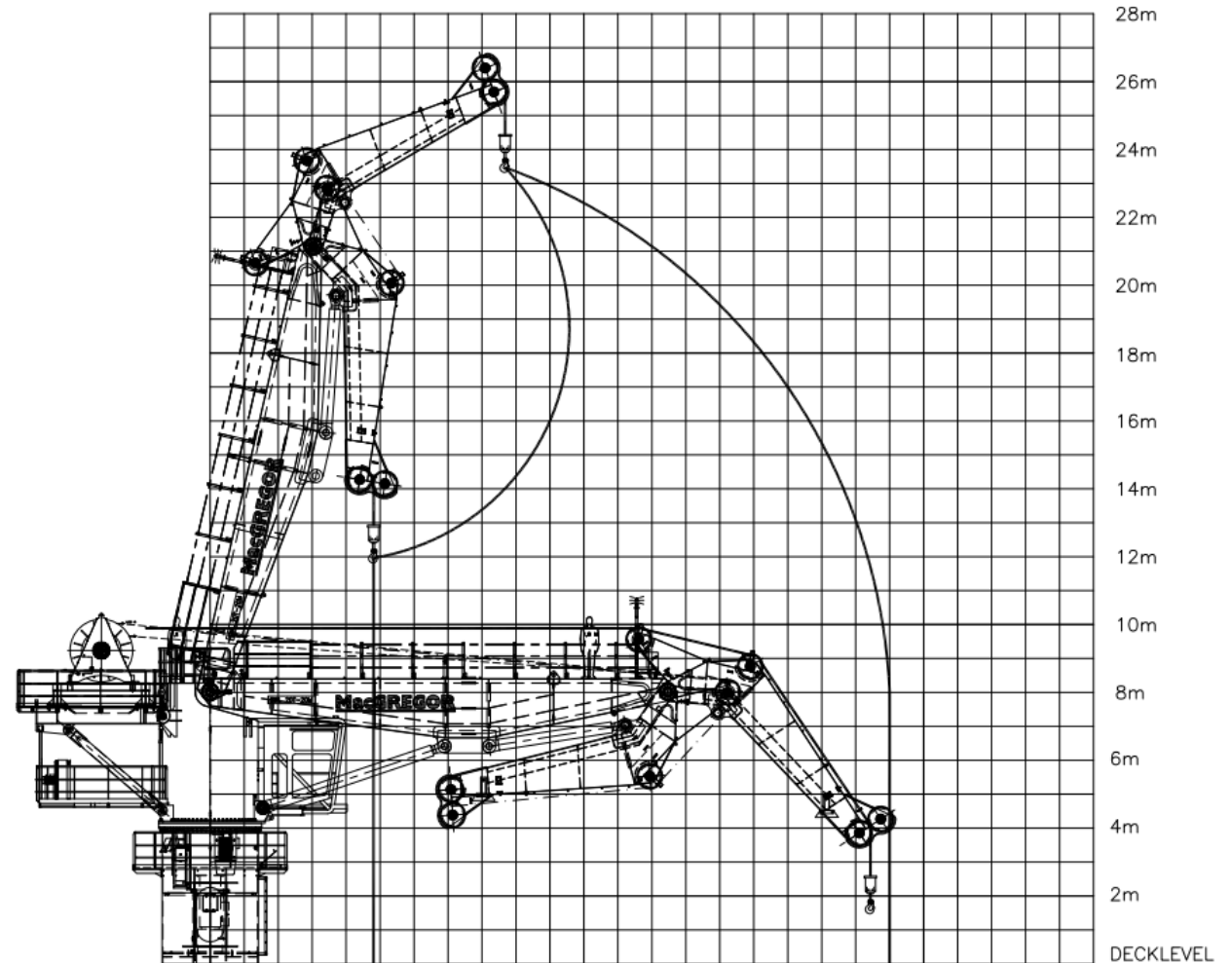
- Permanently fitted on the starboard side of the vessel.
- Designed in cooperation with Siemens originally for operations at the Gode Wind field.



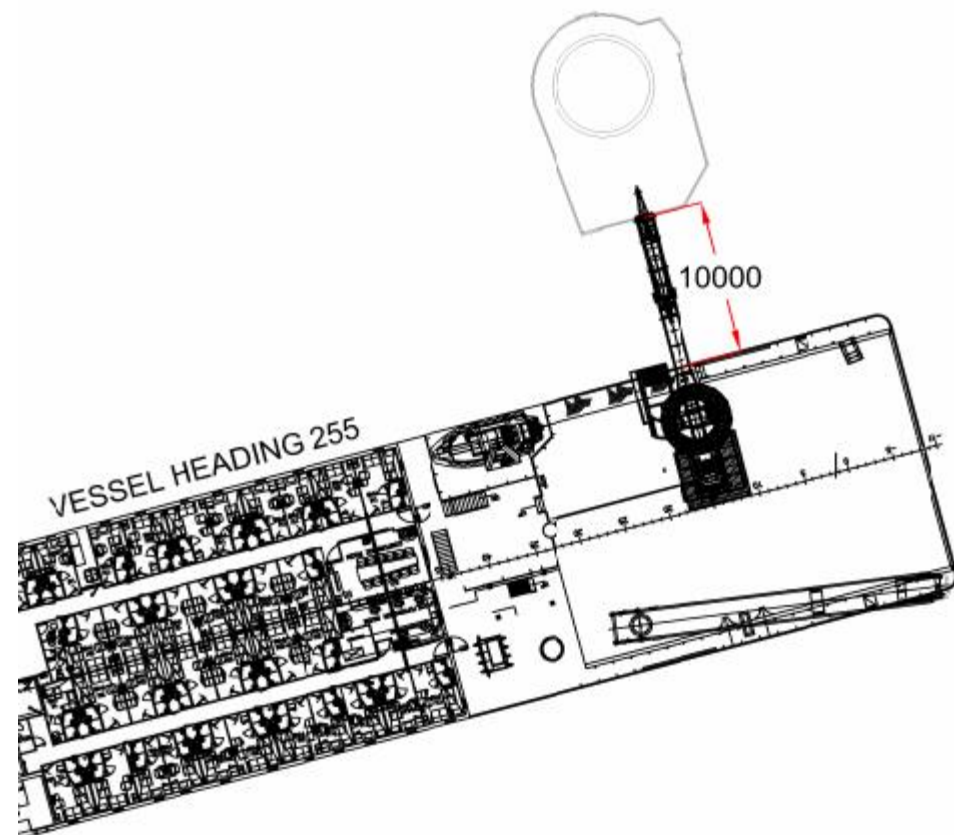
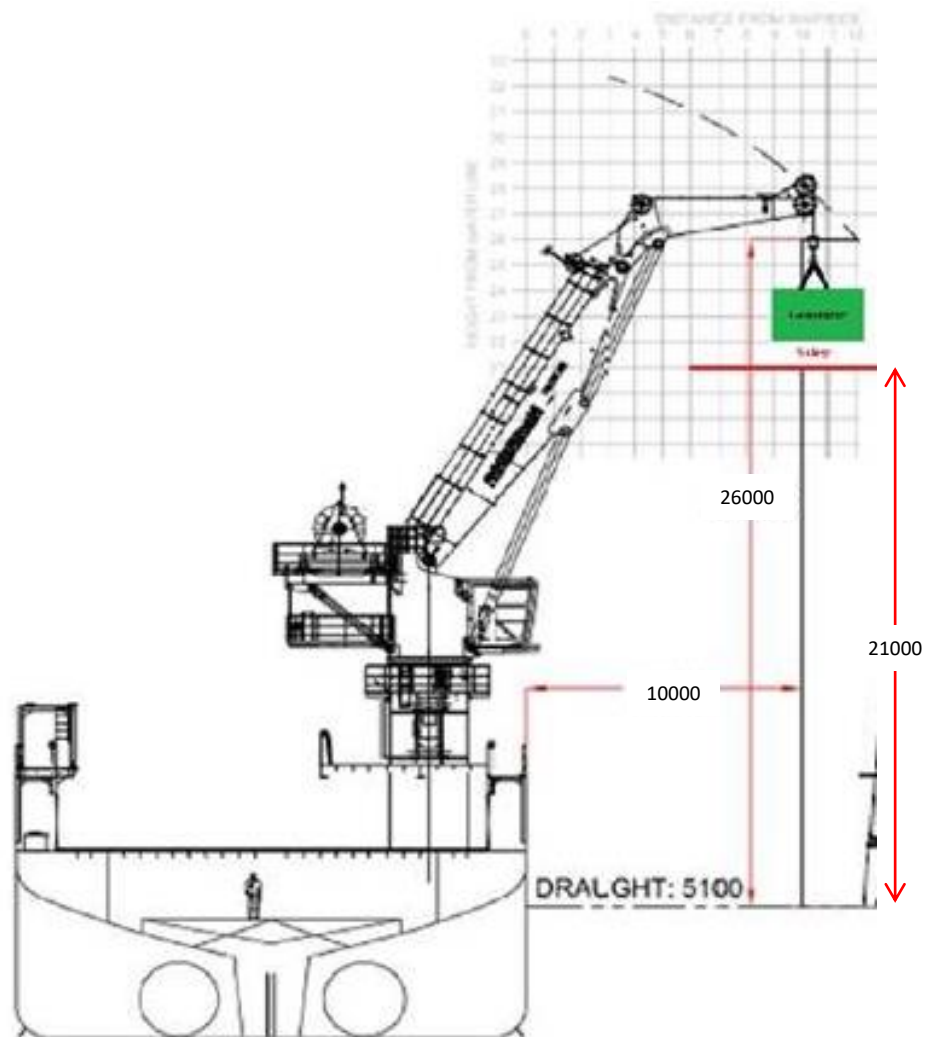
20t Crane - AHC

- Capacity 20t @ 20m (outreach from pedestal) - Single line
- Wire length 1200m Wire diameter 32mm
- Maximum height above sea level 28,5m
- High speed constant tension
- Ship-Ship certified
- Emergency pay-out function: MOPS and AOPS
- Emergency Power system: EPS
- Operators cabin

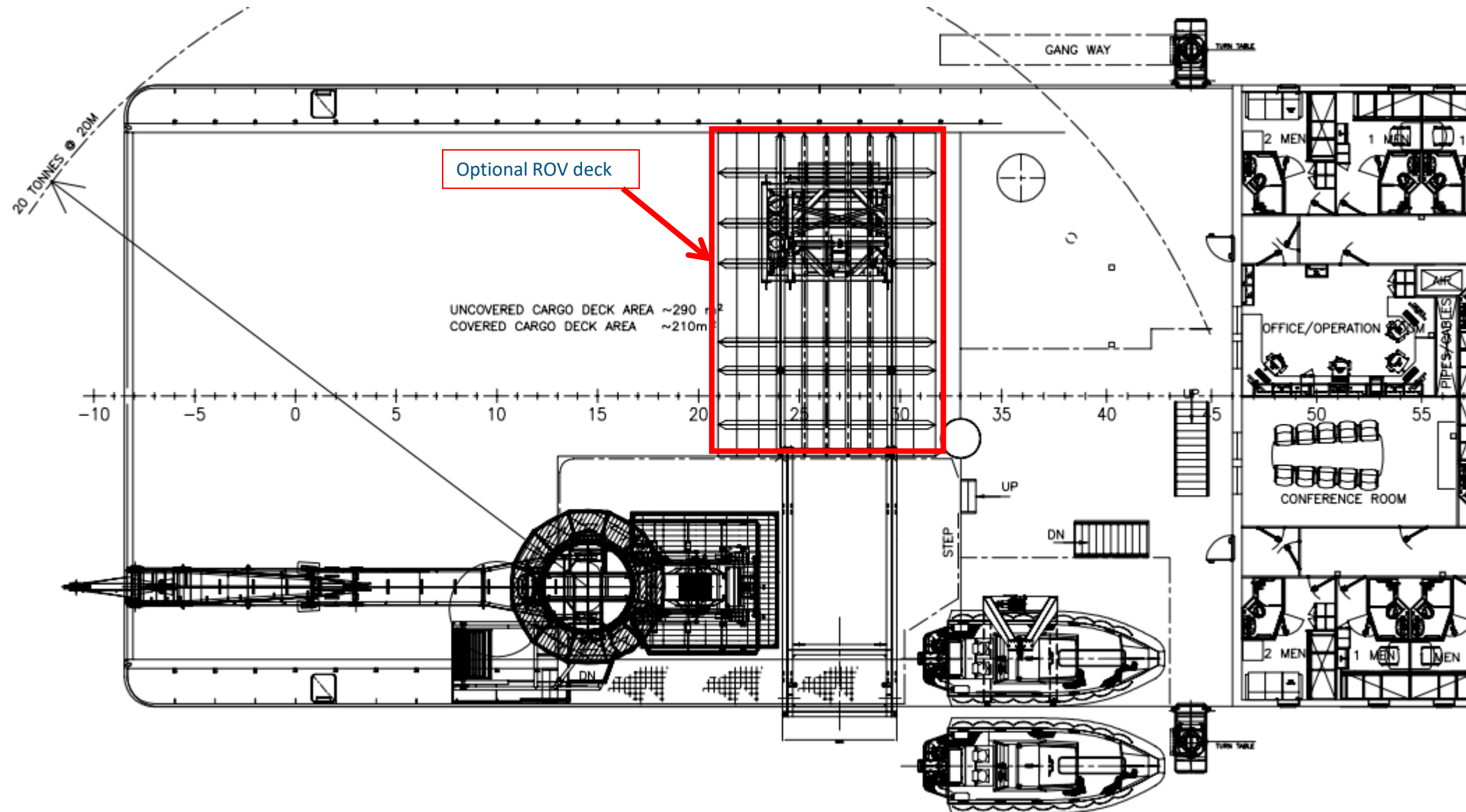
Depth	Remaining hook lifting capacity (t)	Estimated deployment capacity (dry t)
0	20	20
500	17,5	20
1000	15,5	17,5
1200	14,5	16,5



20t Crane - AHC



20t Crane - Placement



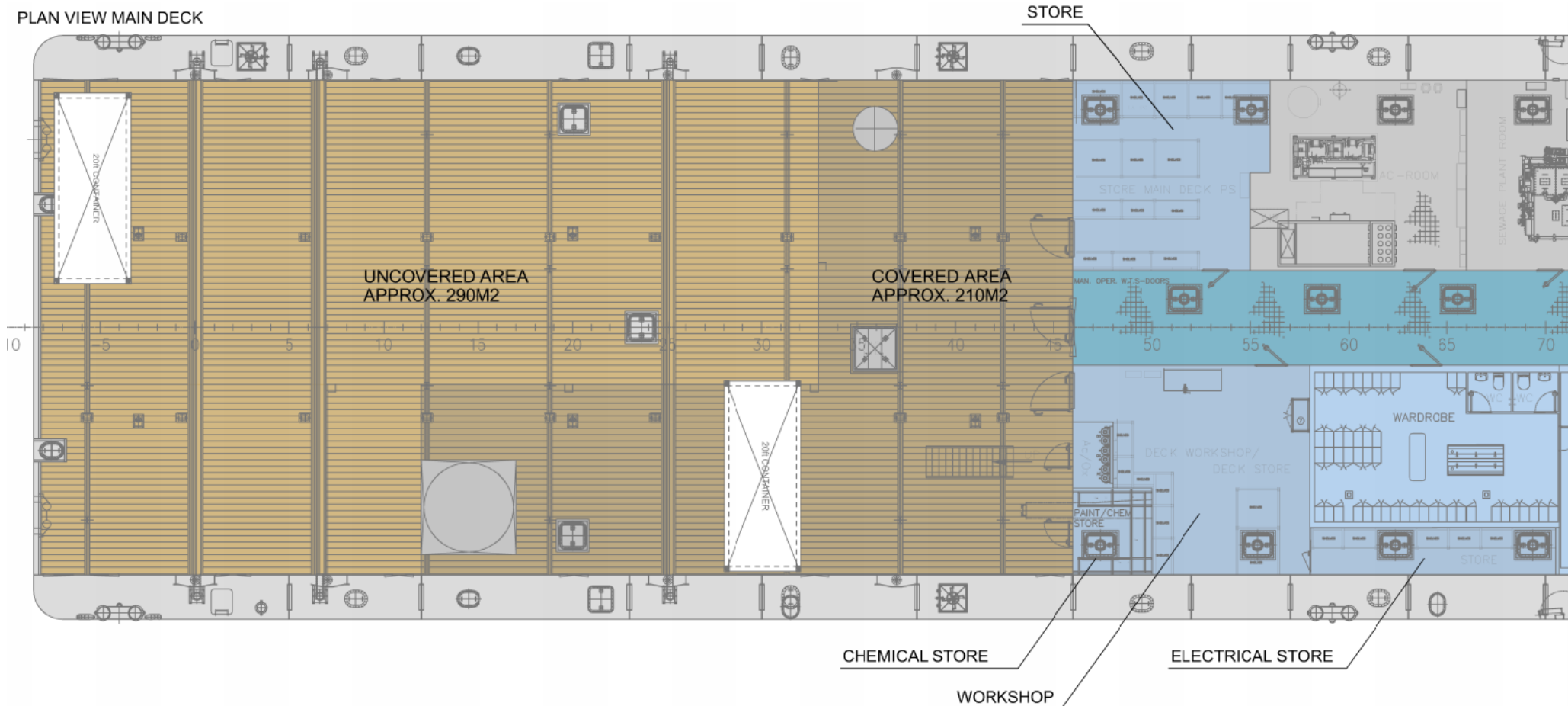
Examples - Crane ops



- 501 total ship to ship lifts
- 12 lifts per day in average

Deck arrangement

- Ample space for 20' containers
- Owners will assist in finding an optimum placement for containers



Client facilities

2 x Office

1 x Conference room

3 x Dayrooms

1 x Internet lounge

1 x Gymnasium

1 x Swimming pool

1 x Large mess room

3 x Wardrobe

1 x Hospital

2 x Stores

1 x Large store/ workshop TV

in all cabins

TV channels and Bazeport film

service TBD

Good internet!

Cabin plan

Cabin plan is based on a full ship with a total of 78 clients and 22 marine crew. This includes 8 in catering crew. See below for positions included.

- Captain
- Chief Officer
- 1 x 1st Officer
- 2 x DPO

- Chief Engineer
- 2nd Engineer
- 3rd Engineer
- Electrician

- 4 x AB/crane/gangway operator

- Chief Stewart
- 2 x Cooks
- 4-6 x Housekeeping

Scenarios:

Full vessel including double cabins and marine crew:

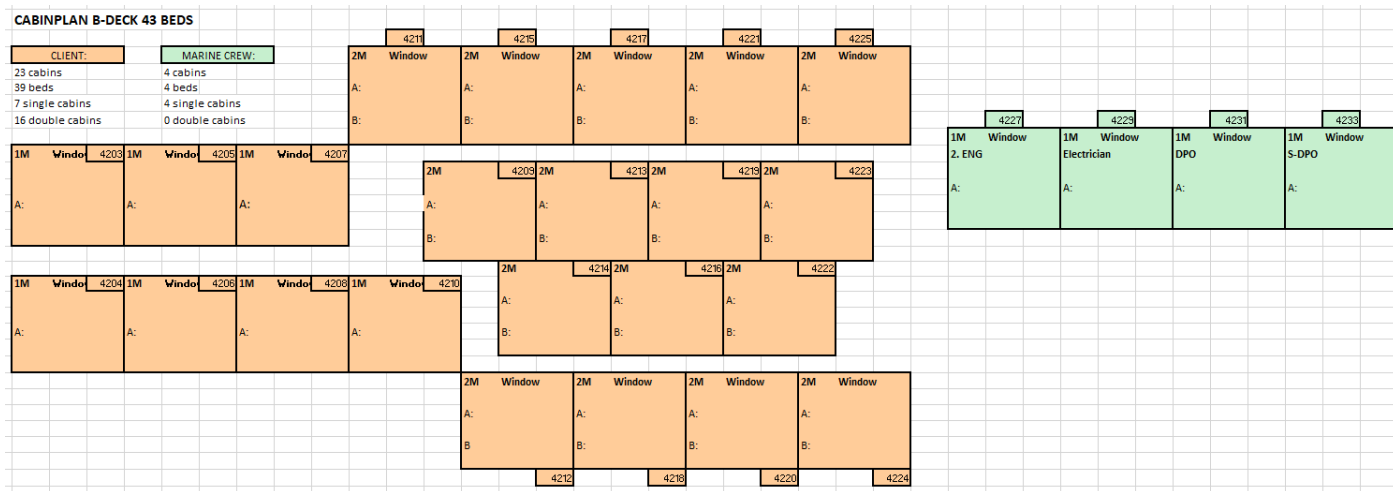
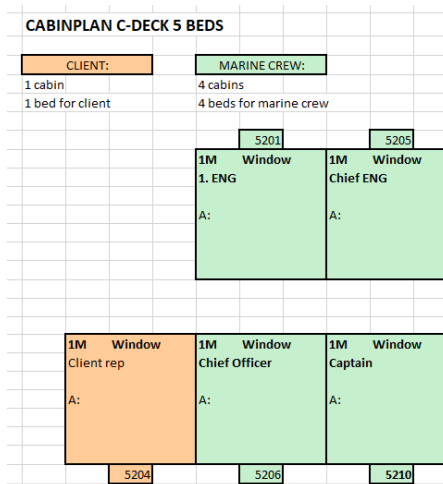
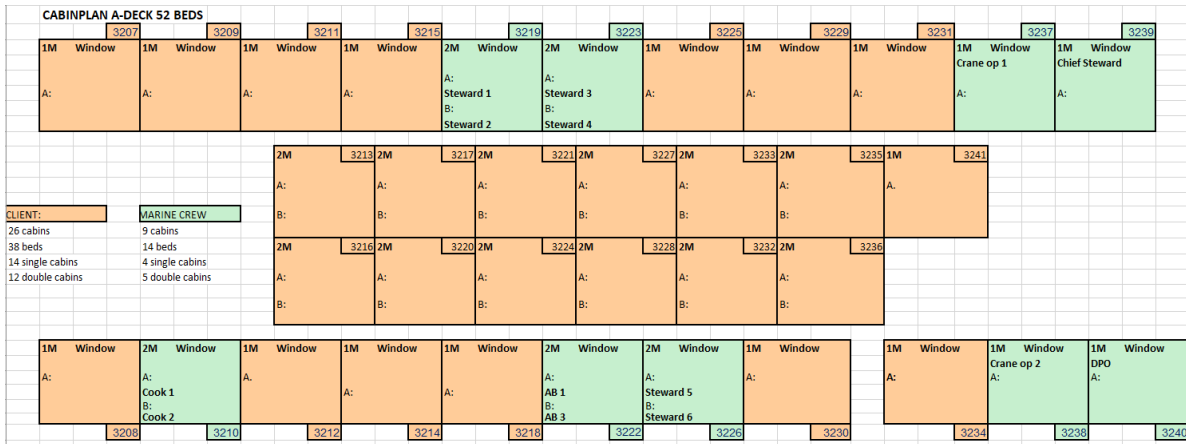
78 clients / 22 marine crew

All clients in single cabins:

48 clients / 21 marine crew

33 client cabins with daylight

Current cabin plan



C-DECK		CLIENT:		MARINE CREW:	
1	cabins	4	cabins	4	cabins
1	bed	4	beds	4	beds
B-DECK		CLIENT:		MARINE CREW:	
23	cabins	4	cabins	4	cabins
39	beds	4	beds	4	beds
7	single cabins	4	single cabins	4	single cabins
16	double cabins	0	double cabins	0	double cabins
A-DECK		CLIENT:		MARINE CREW:	
26	cabins	9	cabins	9	cabins
38	beds	14	beds	14	beds
14	single cabins	4	single cabins	4	single cabins
12	double cabins	5	double cabins	5	double cabins
TOTAL		CLIENT:		MARINE CREW:	
50	cabins	17	cabins	17	cabins
78	beds	22	beds	22	beds
22	single cabins	12	single cabins	12	single cabins
28	double cabins	5	double cabins	5	double cabins



CONFERENCE ROOM (A-DECK)

- Table for 14 persons
- Large flatscreen for presentations etc.
- Wide selection of IT solutions with full connectivity

OFFICE / LOUNGE (B-DECK)





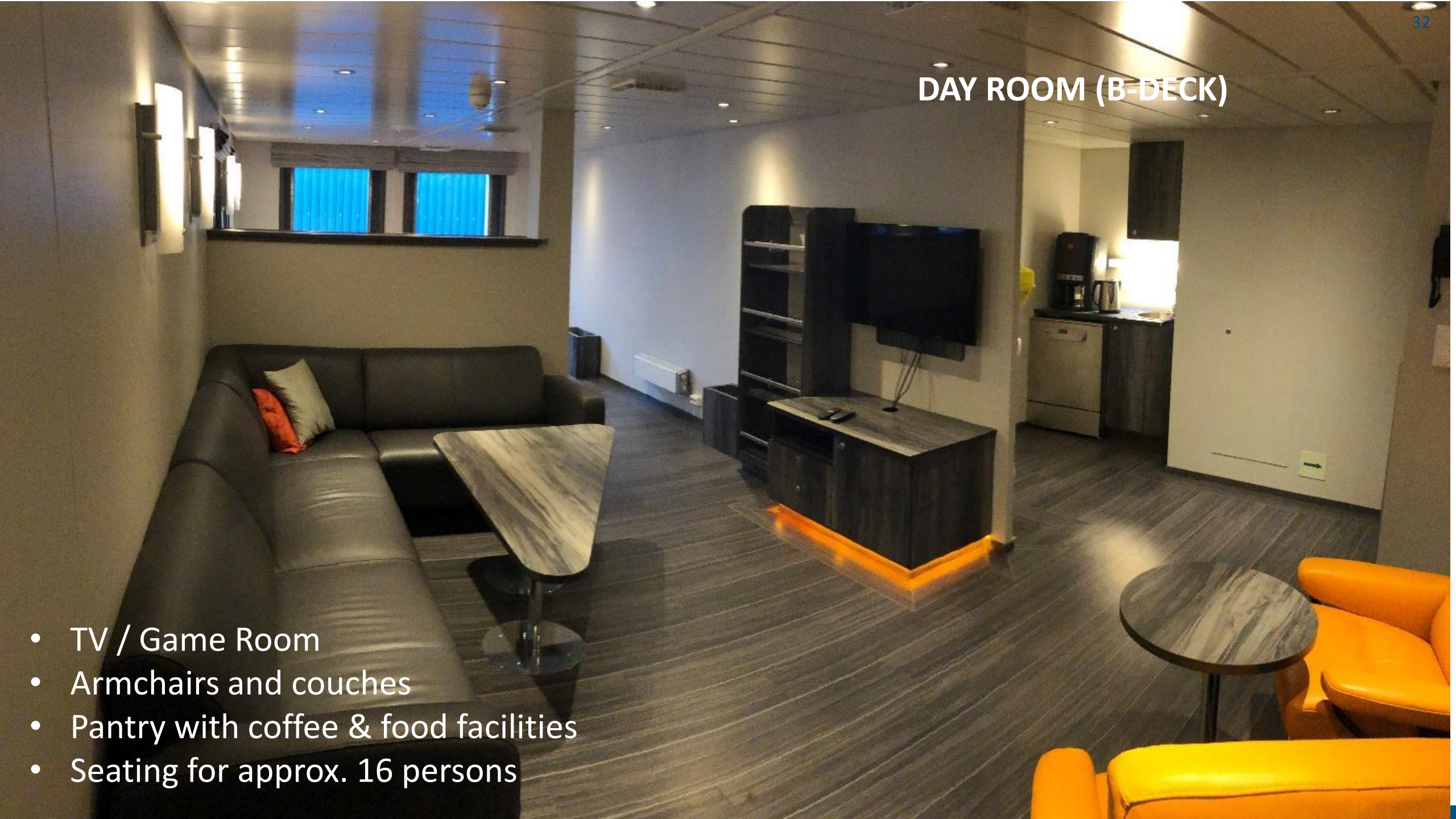
DAY ROOM (B-DECK)

- Large flatscreen TV with entertainment system, VOD & Music
- Seating for approx. 8 persons



DAY ROOM (B-DECK)

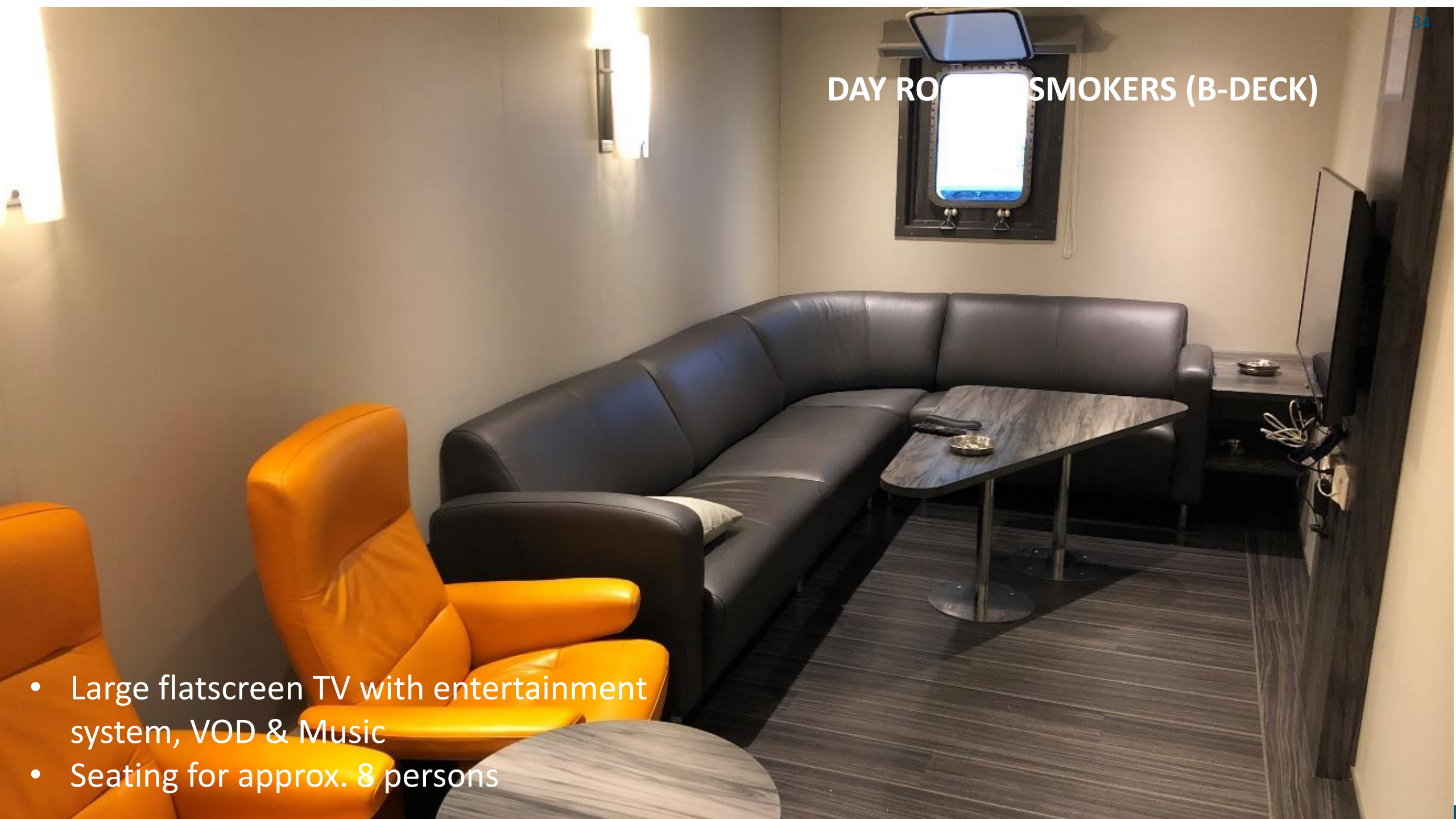
- TV / Game Room
- Armchairs and couches
- Pantry with coffee & food facilities
- Seating for approx. 16 persons



DAY ROOM (B-DECK)

- TV / Game Room
- Armchairs and couches
- Pantry with coffee & food facilities
- Seating for approx. 16 persons

DAY ROOM SMOKERS (B-DECK)



- Large flatscreen TV with entertainment system, VOD & Music
- Seating for approx. 8 persons



WORKSHOP AND STORAGE

- Large workshop with good storage capabilities

CHANGING ROOMS (MAIN DECK)

- Separate changing room for men & women
- Separate WC

DECK OFFICE / RECEPTION (MAIN DECK)



CABINS – OIM/CLIENT REPRESENTATIVE

Facilities as per all other cabins including:

- Private office with all necessary connections
- Separate sleeping quarter with window
- Extra large TV
- Armchair with table
- Double Wardrobe & storage possibilities

CABINS – 1 PAX WITH WINDOW

- Large flatscreen TV with entertainment system, VOD & Music
- Work desk
- Couch
- Wardrobe & storage possibilities
- Private WC & Shower



CABINS – 2 PAX WITH WINDOW

- Large flatscreen TV with entertainment system, VOD & Music
- Work desk
- Couch
- Wardrobe & storage possibilities
- WC & Shower

CABINS – 2 PAX WITHOUT WINDOW

- Large flatscreen TV with entertainment system, VOD & Music
- Work desk
- Couch
- Wardrobe & storage possibilities
- WC & Shower



POOL AREA (C-DECK)

- Heated pool on C-deck
- 24 hours operation
- Continuous circulation of fresh water
- Water heated by waste heat-recovery



Seating for 42 persons



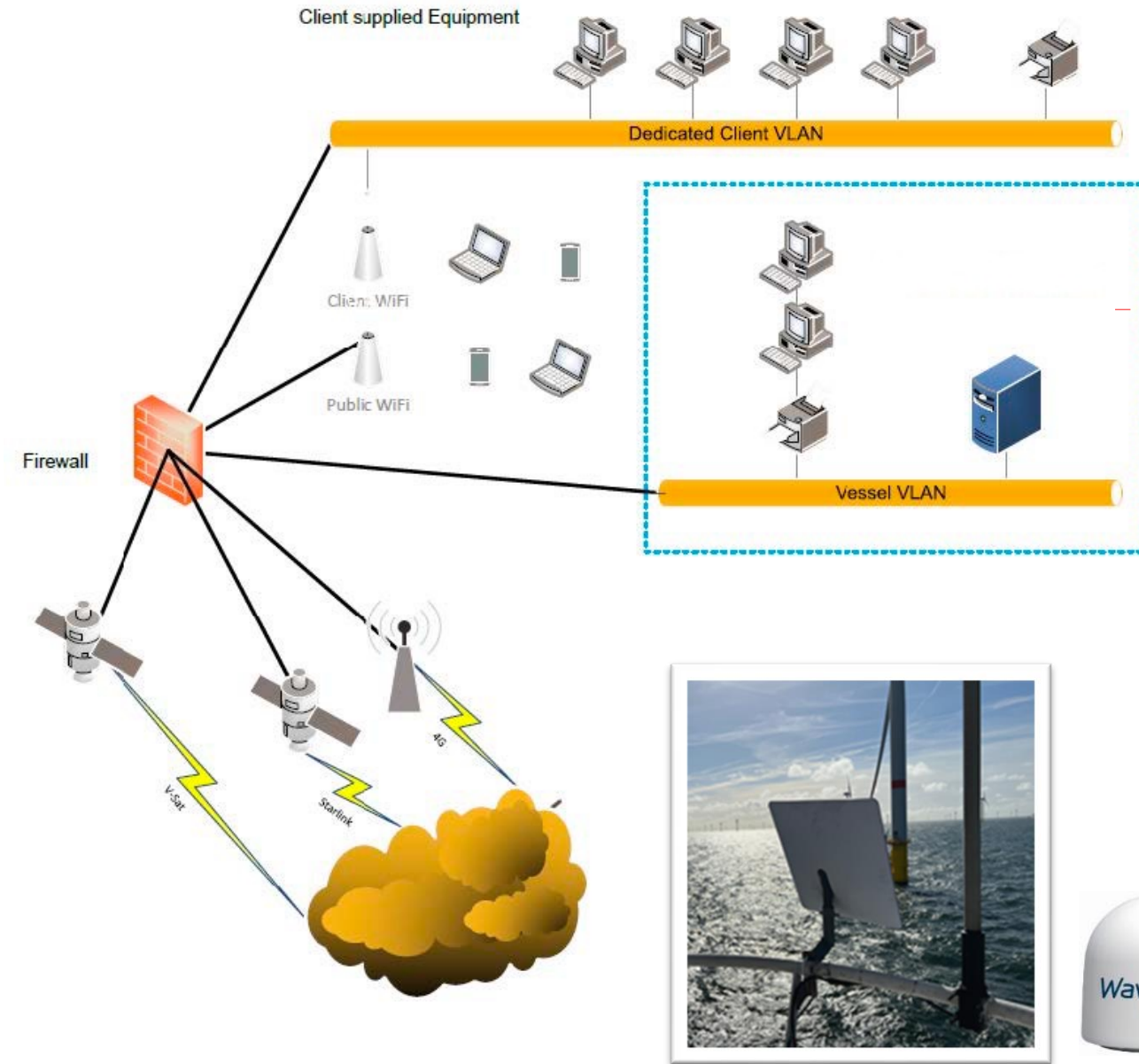
DINING ROOM / MESS HALL

GYM (MAIN DECK)

Wide variety of equipment

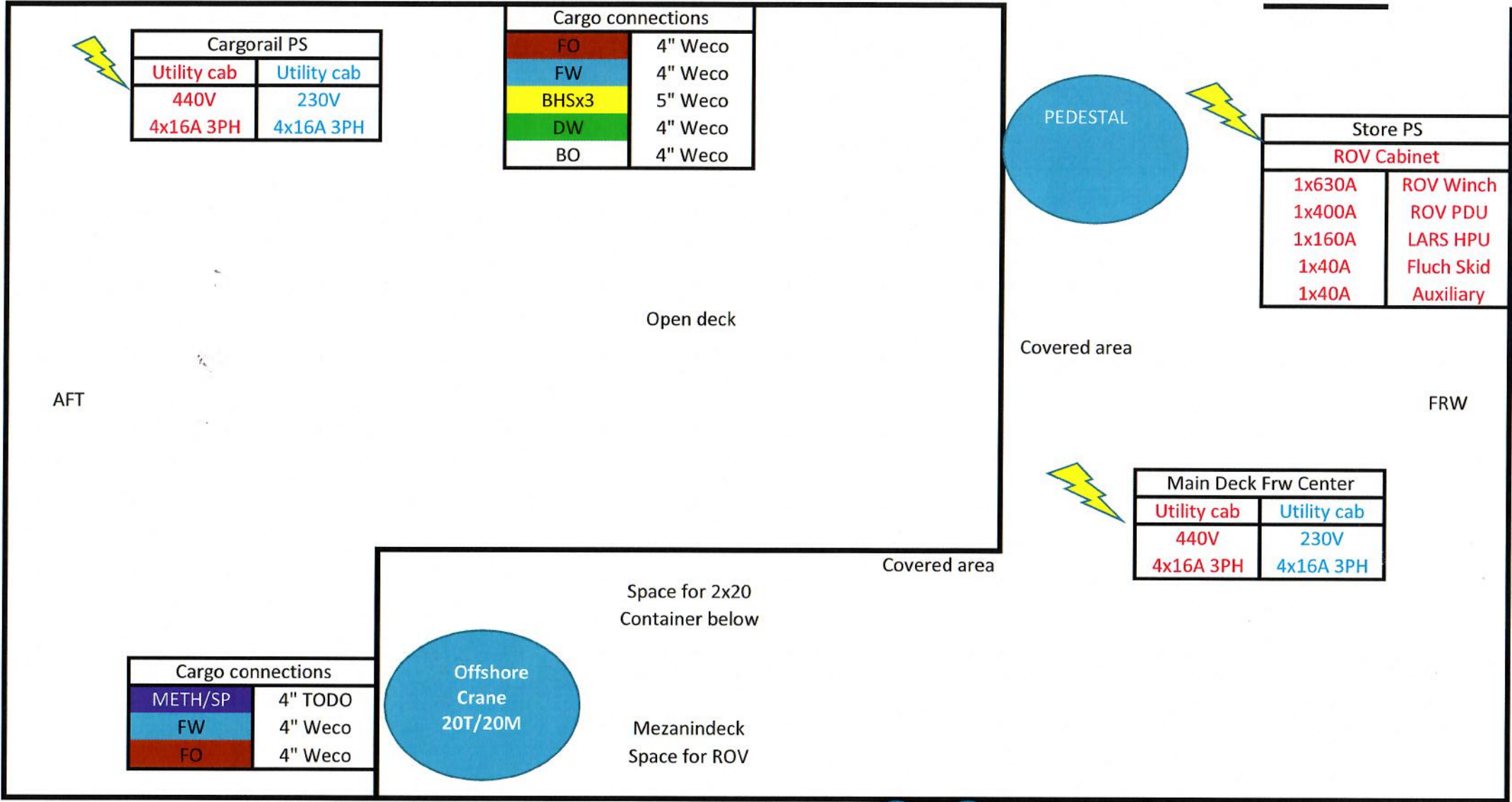


General Vessel Network



- 4/5G equipment with 4-modem bundling for increased coverage and stability
 - Quay-side land based
 - Offshore speed depending on coverage at site
- STARLINK could be installed for increased offshore connectivity and transfer rate
- High capability V-SAT available as back-up offshore.
- Capacity split according to charterers specification (normal 50% to Client Office – 50% to welfare)
- Separate Onboard Client Network with Wifi extension, plus Onboard Public WiFi





Cargorail PS	
Utility cab	Utility cab
440V	230V
4x16A 3PH	4x16A 3PH

Cargo connections	
FO	4" Weco
FW	4" Weco
BHSx3	5" Weco
DW	4" Weco
BO	4" Weco

Store PS	
ROV Cabinet	
1x630A	ROV Winch
1x400A	ROV PDU
1x160A	LARS HPU
1x40A	Fluch Skid
1x40A	Auxiliary

Main Deck Frw Center	
Utility cab	Utility cab
440V	230V
4x16A 3PH	4x16A 3PH

Cargo connections	
METH/SP	4" TODO
FW	4" Weco
FO	4" Weco



AFT

FRW

Open deck

Covered area

Covered area

Space for 2x20
Container below

Mezanindeck
Space for ROV