

120 Pax Accommodations Offshore Work Barge



PRINCIPAL PARTICULAR

Keel laid	2006
Year Built	2008
Delivered Flag	
Length Overall	85.34m
Breadth Moulded	24.38m
Depth Moulded	4.88m
Draft (Max)	3.77m
Displacement @ Max Draft	7269T
Built	2008, Batam Indonesia
GRT/ NRT	4132/1239
Class	BV (Bureau Veritas) Special Service-Offshore Work Barge

CARGO CAPACITIES

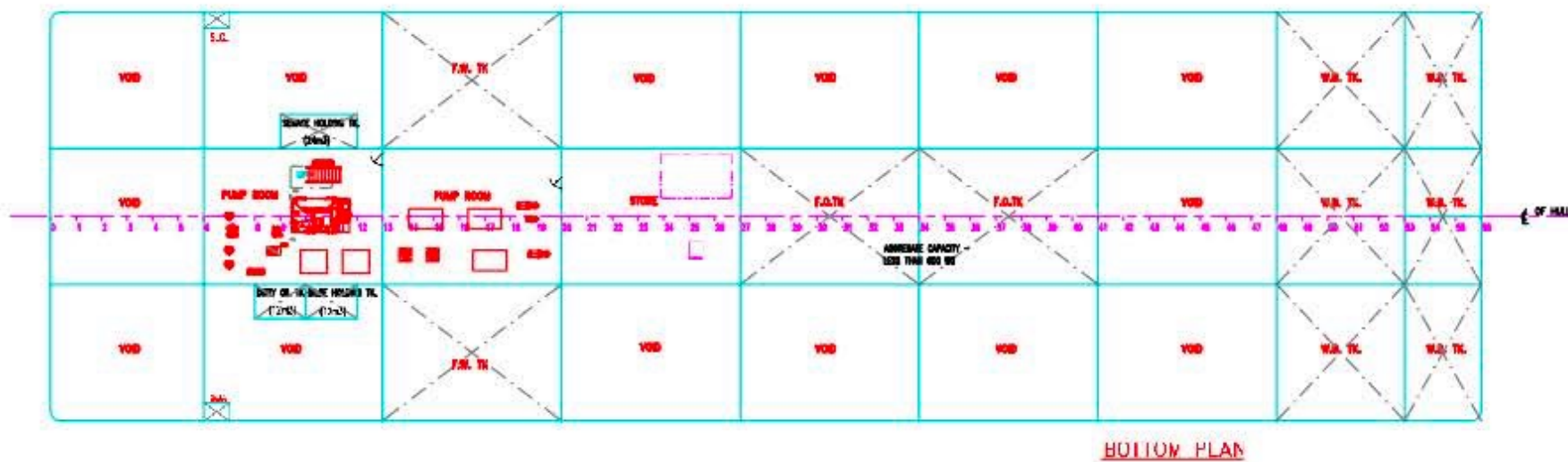
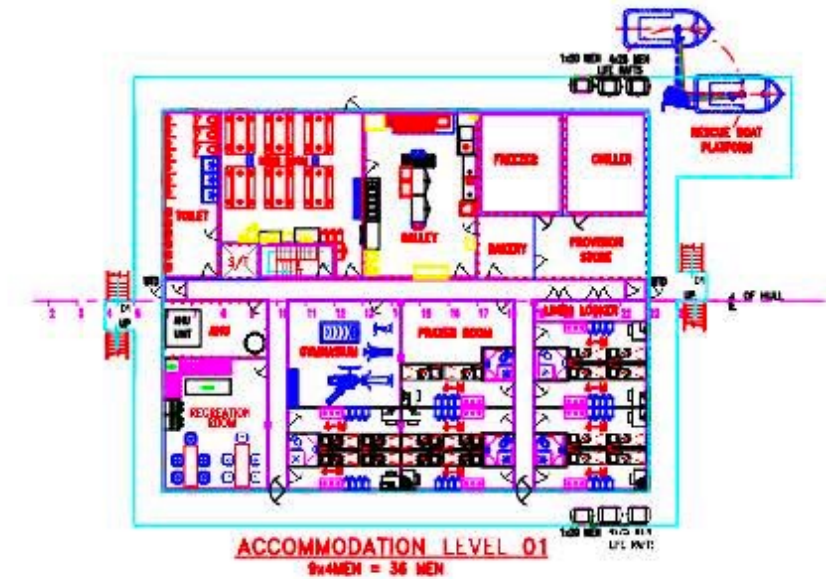
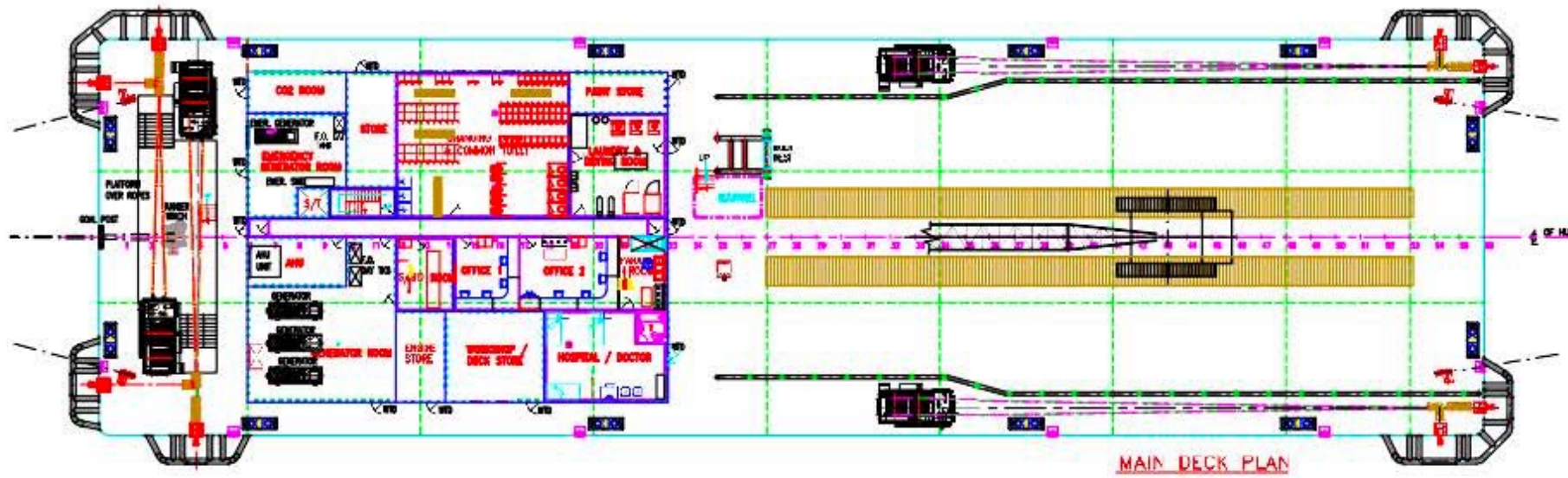
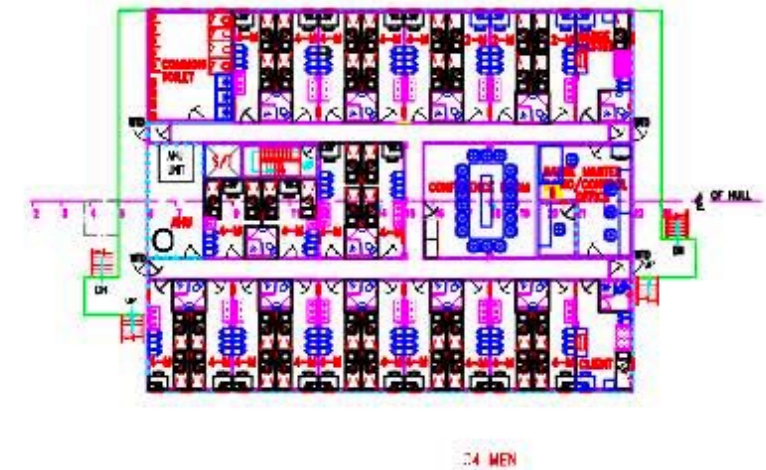
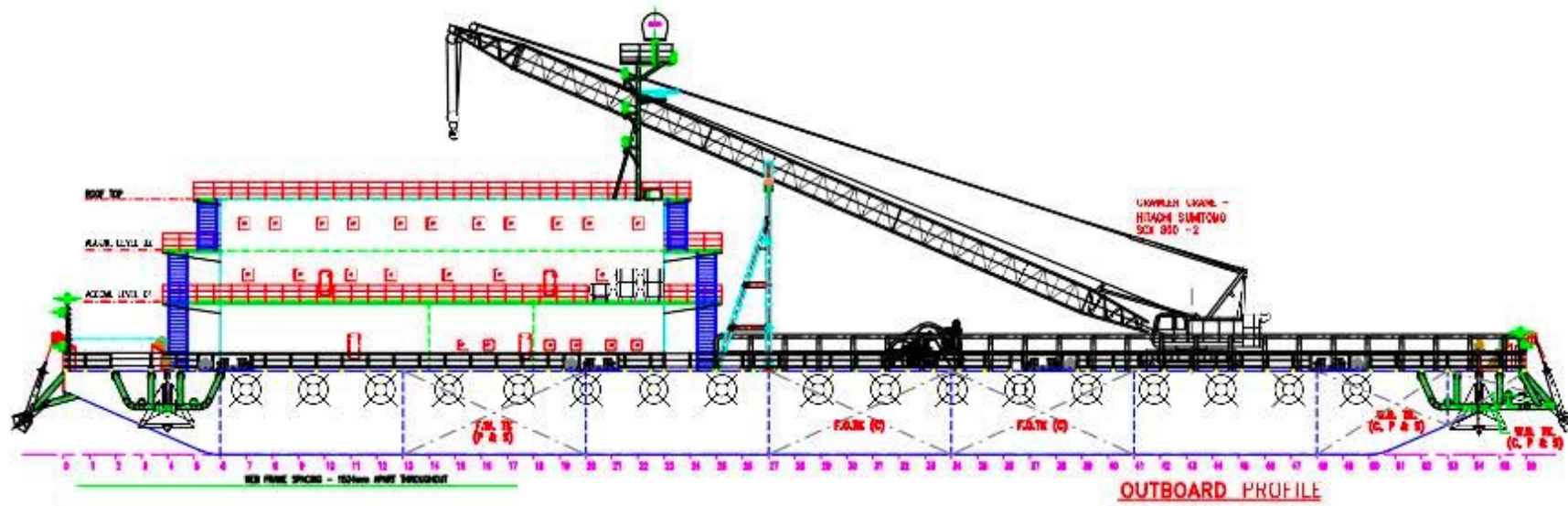
Deadweight	4784T
Deck Strength	15T/m ²
Clear Deck Area	6505 Square Feet (without Crane Space)
Fuel Oil	530mt
Fresh Water	830mt
Ballast Water	1078mt
Freezer/Chiller	2 x 25.54 m ³
Sewage Tank	27.00 m ³
Cooling Water	1007 m ³
Dirty Oil	24 m ³
Lube Oil	2000 Ltrs

PUMPS

Fuel Oil	1 x 80 m ³ /hr @ 50m/head
Fresh Water	1 x 50 m ³ /hr @ 60m/head (centrifugal)
Ballast Water	1x 100 m ³ /hr @ 60m/head (centrifugal)
AirCon Cooling (SW)	2 x 50 m ³ /hr @ 60m/head

Generator Cooling (SW)	1 x 50 m ³ /hr @ 60m/head
MACHINERY	
Generator	3 x 504kw @1500rpm, Cummins KTA19-D(M) /675 HP
Alternator	3 x 400kw AC 415V, 50Hz, 3 Phase
Emergency Generator	1 x 108hp/ Cummins 6CT8-3GM115 125kva x 400V, 50Hz- 3 Phase
DECK EQUIPMENT	
8-point Mooring	4 Diesel Driven Drum Waterfall Winch 77 Ton Line Pull (AM HOIST-AM77EF) 16 Vertical Sheaves & 8 Fairleaders Drum Cap 1200m (L) x 38mm (φ) SWR
Brake Capacity	72 Tons Static
Anchor Wire	9 x 1100m (L) x 38mm (φ) SWR
Anchor	9 x 5000kg Flipper Delta Anchors
Suitcase Buoy	9 x 2.45m (L) x 1.83m (φ)
Tugger Winch	2 x 10 mt, Engine Drive (23hp) model: CF-230R
Rescue Boat Davits	1 (SCM 12-3,5 R, Winch 04-03E Max SWL 10 kN, Testload Static 22 KN)
Crawler Crane	Lifting Capacity 150 T
AUXILIARY EQUIPMENT	
Oil Water Separator	1 x 1.13 m ³ /hr (BOSS ST107)
Sewage Treatment Plant	1 X 150 men/day; Biomaster (Mdl ST 10) (Mean Hyd' Load :15.81 m ³ /day, Organic : 10.13 m ³ /day Peak Hyd' Load :14.67 lit/min)
Water Maker	2 x 20 m ³ /day Reverse Osmosis; Seanly Tech 1 x 40 m ³ /day Reverse Osmosis; Seanly Tech
Dirty Oil Tank & Bilge Holding	2 x 13.8 m ³
Air Compressor	2 x 1.0 mpa (Air Man PTS 390S) installed on main deck
ACCOMMODATION	
Single Berth	2 x 1 berth (2 men)
Double Berth	3 x 2 berth (6 men)
Four men Berth	28 x 4 berth (112 men)
Total	120 men
All cabins fully air-conditioned. (2 Units x AHU Central Air Cond' System on Main Deck, Level 1 & Level 2)	
RADIO & NAVIGATION EQUIPMENT	
GMDSS	Sea Area A1 +A 2
SSB	1 Furuno FS-1570 (MMSI. 370-237-000)
Satellite Phone (Iridium)	1 x Sailor (ST-4120)
Satellite E-mail/WIFI(Thales)	Iridium Thales (SC4000)
VHF Radio	2 x Furuno FM 8800 with Built-in DSC
Navtex Receiver	1 x Furuno NX 700

SART	2 x NSR-1000
EPIRB	1 x Mc Murdo E5
GMDSS VHF Rdo	3 x SEALINK HX1500
Portable Marine VHF Rdo (IS)	8 x Motorola GP-328
Radar	1 x Furuno 1932 MK2
Video Sounder (Color)	1 x Furuno FCV-585
GPS	1 x NAVIGATOR GP-170
Weather Fax	1 x Furuno FAX 408
AIS	1 x NSR
Magnetic Compass	1x Daiko T-150B
Wind Monitor RM	1 x Young 05103-58
Heading Sensor	1 x Furuno PG-500
Barge also fitted with Vingtor PA Talkbalk System and Sound Powered Telephones (22 lines) Batteryless Telephone Vingtor (VSP-213-L) 6 Lines	
FIRE FIGHTING & SURVIVAL EQUIPMENT	
Ballast/Bilge/GS	1 x 100 m ³ /hr @ 60 m.w.c
Portable Fire Pump	1 no.
Life Rafts	10 x 25-man SOLAS (83/96 approved)
Rescue Boat	1 x 6 persons (Davit Launched Outboard Powered Rightable Rigid-Inflatable Type RB400 SOLAS)
Fire Detection & Alarm System in all enclosed spaces. (Trondheim-Norway) Fixed CO2 System @ Main Deck (Aft-Port) for Generator Room, Paint Store, Pump Room 1 & 2 Fixed Automatic Water Sprinkler System for Whole Accommodation space, including Store & Workshop. (GW Sprinkler A/S-Denmark)	
OTHER FACILITIES	
Hospital	1 x Double Berth Hospital with attached Paramedic Room
Galley	1 w/Cooking Equipment, Refrigerators etc. (6 Arox Stoves/23.4kw + 4 Arox Stoves/17.4kw) (2 Unites Reefer/ Capacity 25.53 m ³)
Messroom	1 on Deck Level 1 Seating Capacity 60 men
Offices	2 Rooms on Main Deck
Conference Rooms	1 with Seating Capacity for 18 men
TV/Video Room	1 with Seating Capacity for 20 men
Others	1 x Prayer Room, 1 Dry Provision Room 1 x Laundry/ Drying Room 1 Winch Control Room & 2 x Dryer (24 kgs)
Radio Control Room	1 c/w VHF/SSB & CCTV System for Winches
Gym Room	1 on Deck Level 1
Changing Room	1 on Main Deck with 92 Locker
Work Shop	1 on Main Deck



- 80.34 M (263.80 FT)
- 24.38 M (80.00 FT)
- 4.88 M (16.00 FT)
- 880 TONNES (approx.)
- 825 TONNES (approx.)
- 820 TONNES (approx.)

NO.	DATE	DESCRIPTION	BY	CHKD	APPD.
B	16/06/08	AS BUILT	JTAN	JTAN	
A	14/01/08	ISSUED TO OWNER FOR COMMENT.	JTAN	JTAN	

GENERAL ARRANGEMENT					
PROJECT:	CONVERSION OF CREST 285 TO 120 MEN ACCOMMODATION WORK BARGE				
VEHICLE:					
CLASS:	BUREAU VERITAS				

THIS DOCUMENT AND THE INFORMATION IT CONTAINS IS COPYRIGHT AND REMAINS THE PROPERTY OF JTAN MARINE DESIGN SERVICES. IT IS NOT TO BE COPIED IN WHOLE OR IN PART OR DISCLOSED TO ANY THIRD PARTY FOR ANY PURPOSE WHATSOEVER WITHOUT PRIOR WRITTEN CONSENT.

Crane:
 Max. Boom Length w/Job Boom:
 Max. Lift Capacity w/Job Boom Radius:
 Counterweight (Standard Spec):
 Total Operating Weight:
 (with 18 m boom & 150t hook block)
 Counterweight (Additional Spec):
 Total Operating Weight:
 (with 18 m boom & 150t hook block)

14 CCH 1500-3
 103 m 1 1/2 m main - 31 m - 4
 150 metric tons x 5.0 m
 56 MT
 152.6 Ton
 69MT + 16 MT=85 MT
 181.6 Ton

PRINCIPAL PARTICULARS

LENGTH OVERALL	85.34 M (280.05 FT)
BEAM MOULDED	24.38 M (80.00 FT)
DEPTH MOULDED	4.88 M (16.00 FT)
COMPLEMENT	120 MEN
FUEL OIL	595 TONNES (OPERATION)
FRESH WATER	825 TONNES (OPERATION)
WATER BALLAST	820 TONNES (OPERATION)

3.2MT @ 62M RADIUS

6.4MT @ 50M RADIUS

10.4MT @ 40M RADIUS

16.4MT @ 30M RADIUS

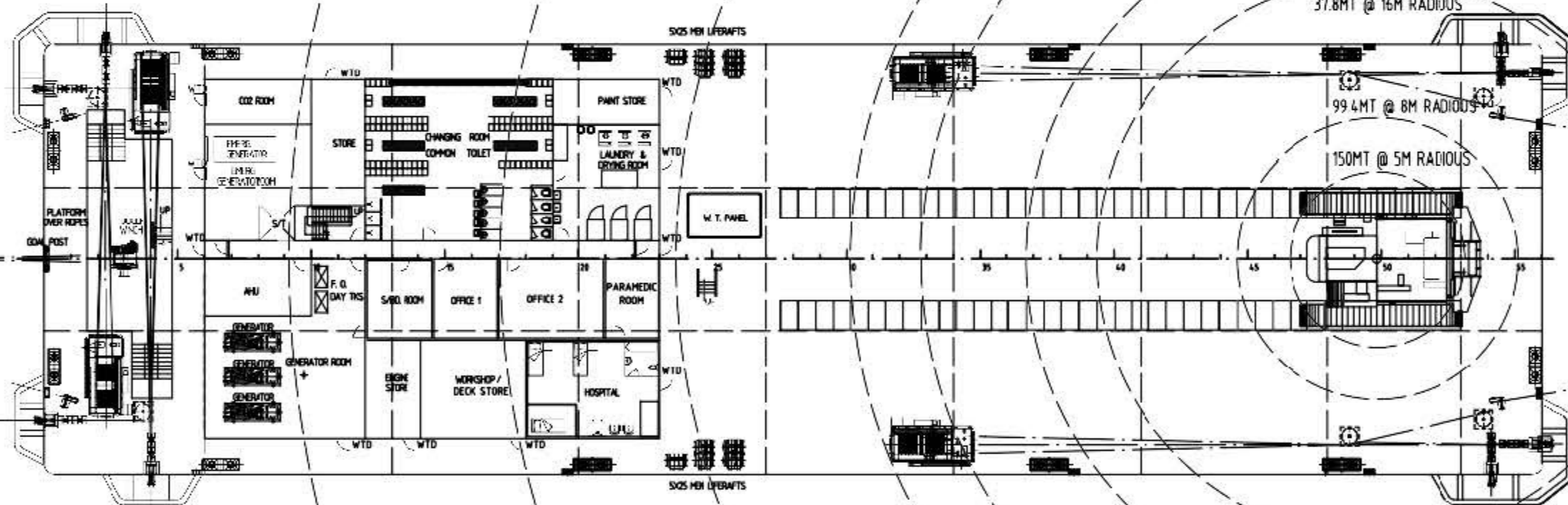
19.8MT @ 26M RADIUS

28.2MT @ 20M RADIUS

37.8MT @ 16M RADIUS

99.4MT @ 8M RADIUS

150MT @ 5M RADIUS



MAIN DECK PLAN

PROJECT	120 MEN ACCOMMODATION WORK BARGE		
150T Crane Load Chart Layout	DATE	REV	BY
SCALE	SHEET	STATUS	
1:200	11	REV	