

FUEL OIL TANK (S.G. = 0.90 t/m³)					
COMPARTMENT	LOCATION (FRAMES)	CAPACITY		CENTRE OF GRAVITY	
		VOLUME 100% m³	WEIGHT 98% TON	L.C.G. (MIDSHIP) m	V.C.G. (B.L.) m
NO.1 F.O.(P)	F56 ~ F69	40.480	35.703	6.920	4.200
NO.1 F.O.(S)	F56 ~ F69	40.480	35.703	6.920	4.200
NO.1 F.O.(C)	F61 ~ F69	164.810	145.362	8.570	4.140
NO.2 F.O.(P)	F34 ~ F34	61.900	54.596	-4.200	4.120
NO.2 F.O.(S)	F34 ~ F34	61.900	54.596	-4.200	4.120
NO.3 F.O.(C)	F19 ~ F30	33.340	29.406	-15.820	5.330
NO.3 F.O.(P)	F10 ~ F30	105.660	93.192	-17.850	4.810
NO.3 F.O.(S)	F10 ~ F30	105.660	93.192	-17.850	4.810
NO.4 F.O.(P)	F5 ~ F10	51.620	45.529	-26.030	5.570
NO.4 F.O.(S)	F5 ~ F10	51.620	45.529	-26.030	5.570
F.O. DAY TANK (P)	F33 ~ F48	22.380	19.739	-6.300	5.610
F.O. DAY TANK (S)	F33 ~ F48	22.380	19.739	-6.300	5.610
SUM		762.230	672.287		

FRESH WATER TANKS (S.G. = 1.000 t/m³)					
COMPARTMENT	LOCATION (FRAMES)	CAPACITY		CENTRE OF GRAVITY	
		VOLUME 100% m³	WEIGHT 100% TON	L.C.G. (MIDSHIP) m	V.C.G. (B.L.) m
POTABLE WATER (P)	F70 ~ F88	256.050	256.050	16.950	3.420
POTABLE WATER (S)	F70 ~ F88	259.150	259.150	17.000	3.430
SUM		515.200	515.200		

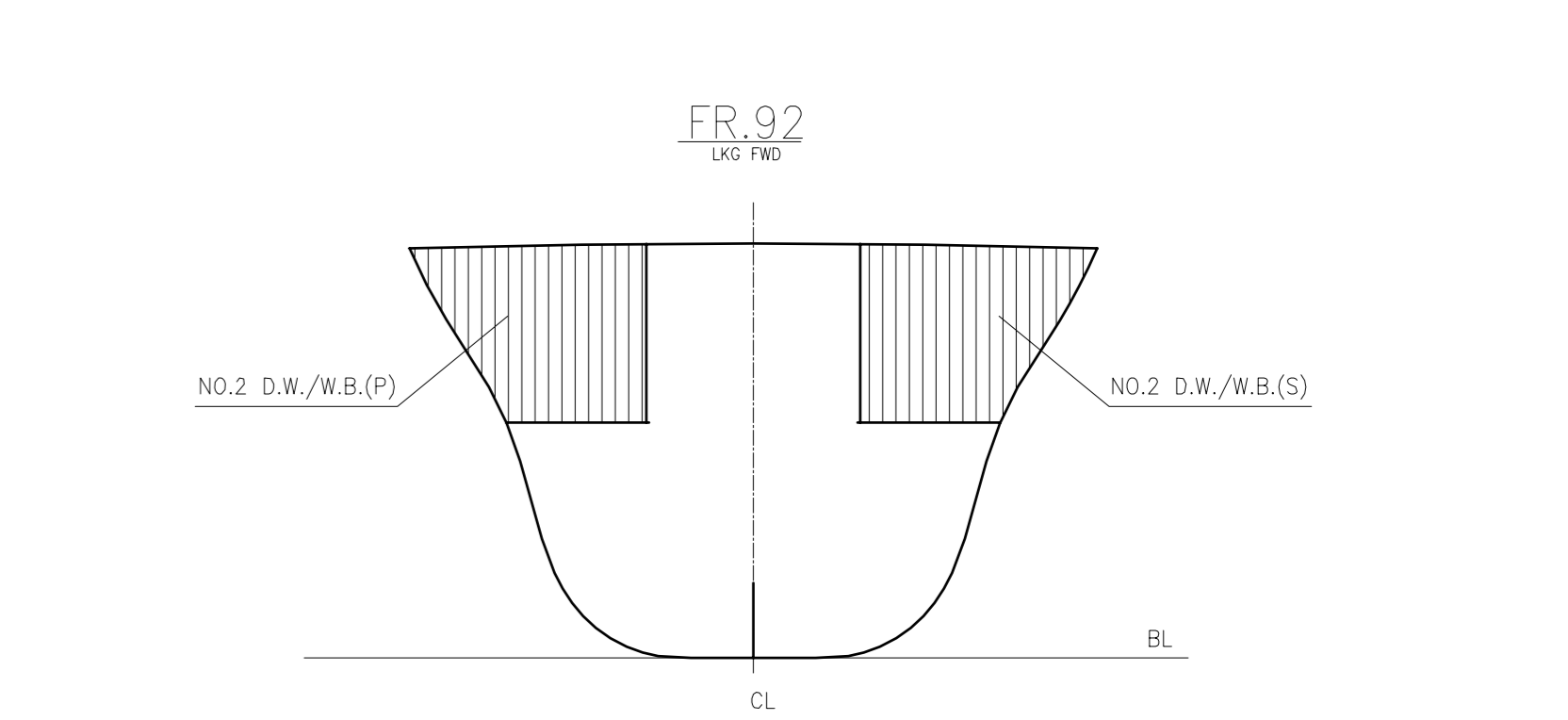
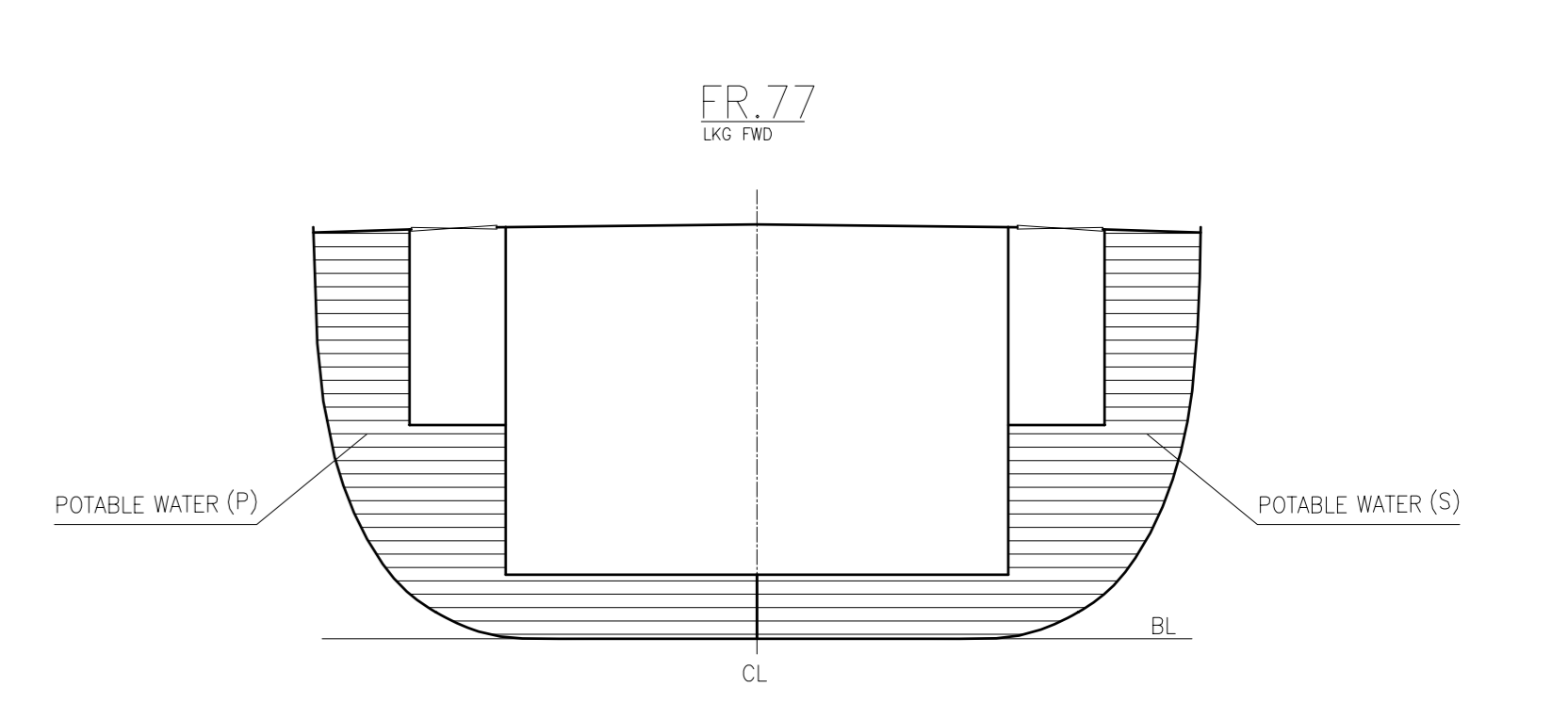
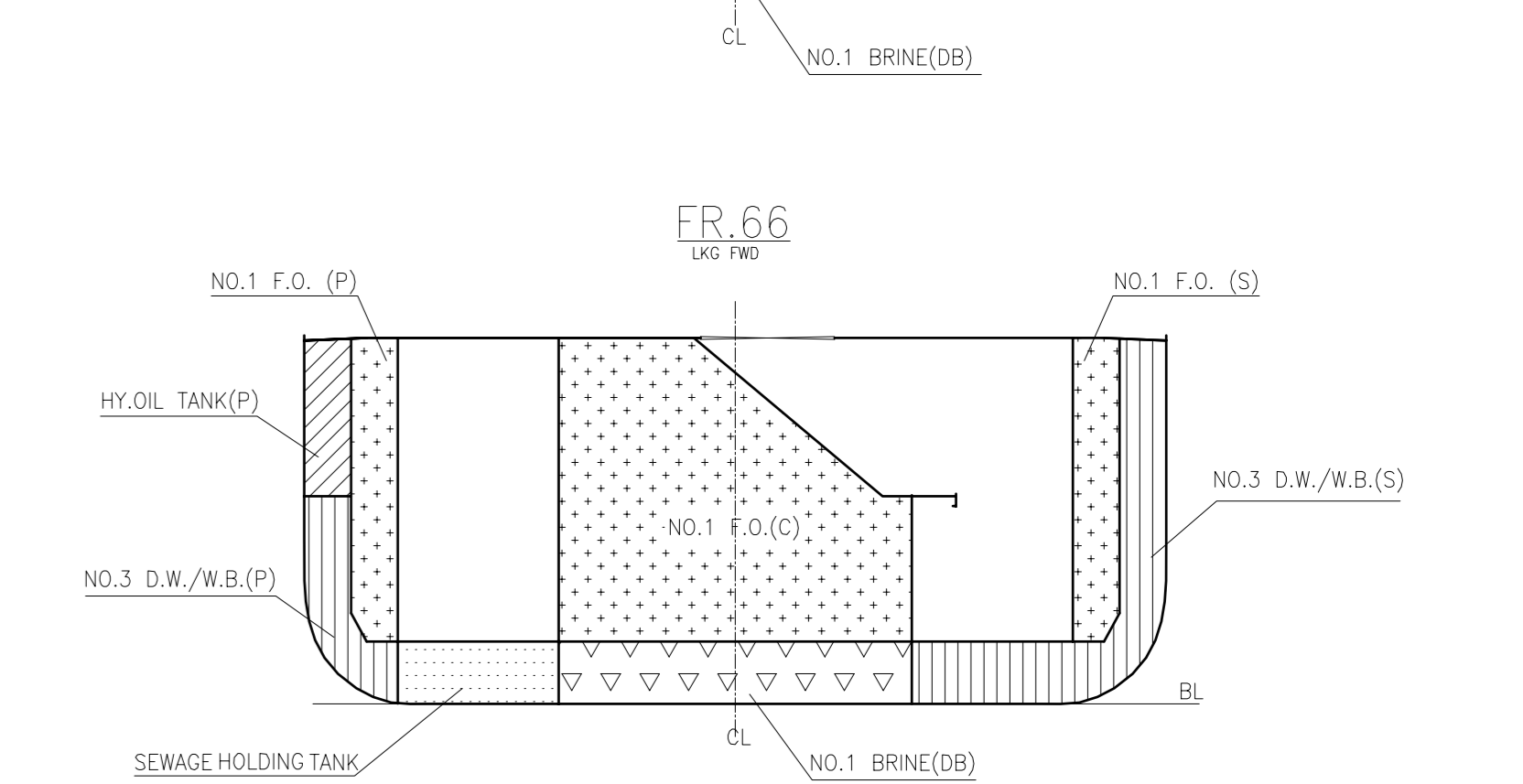
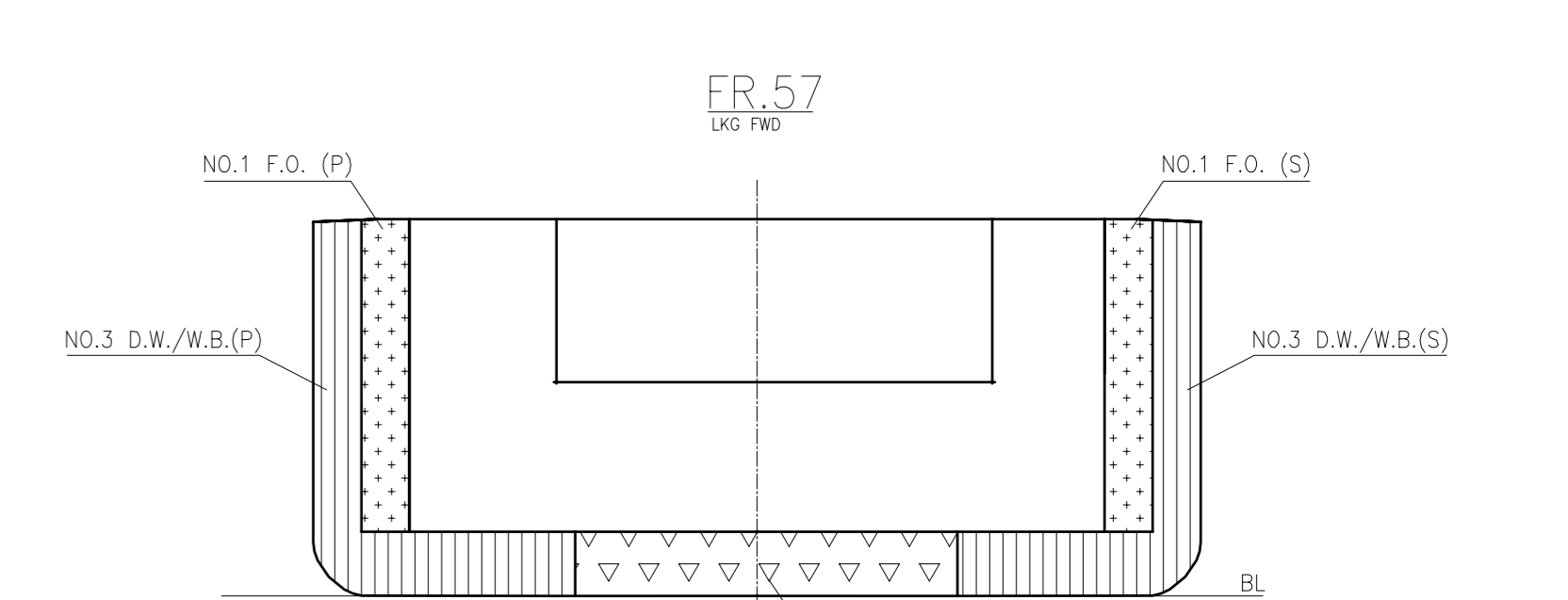
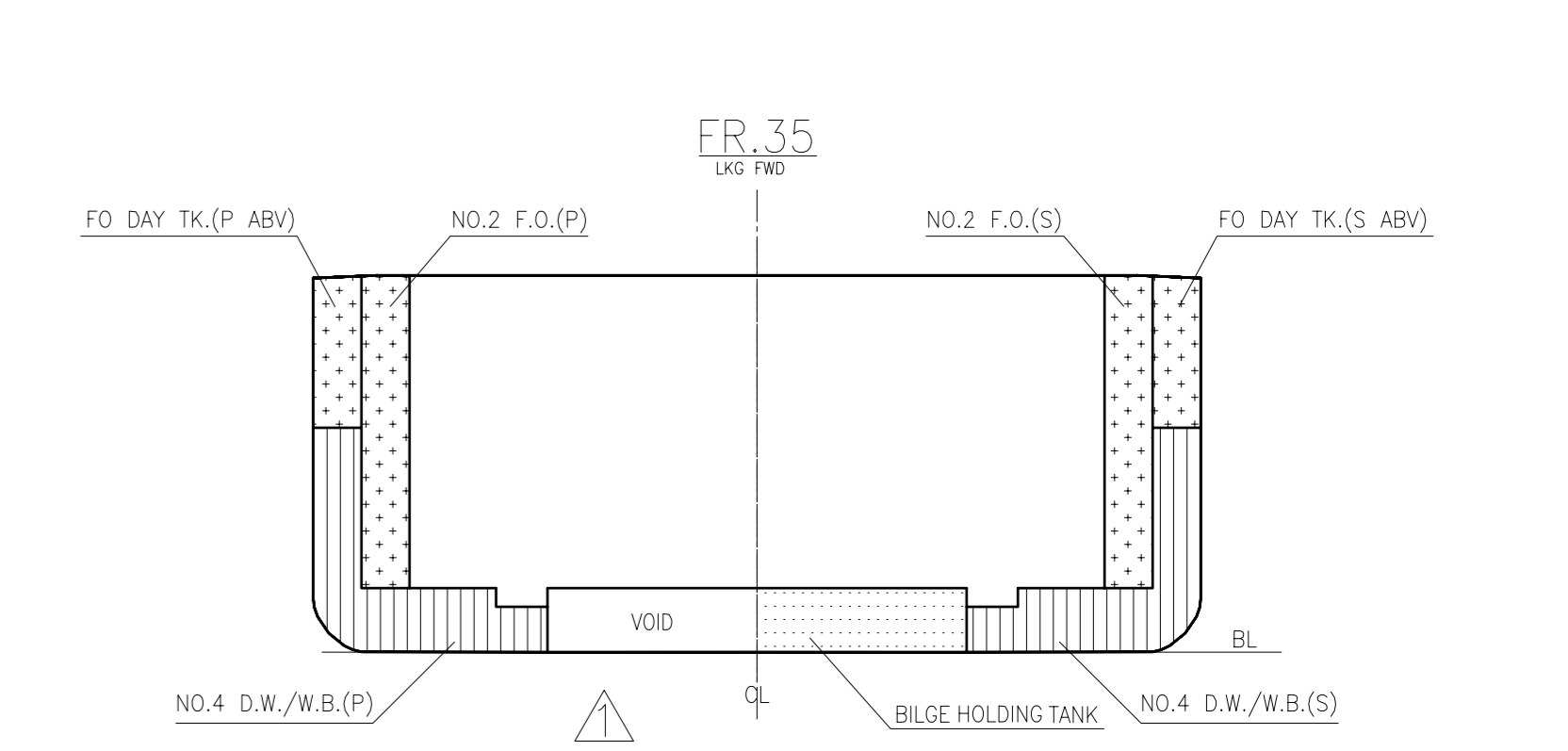
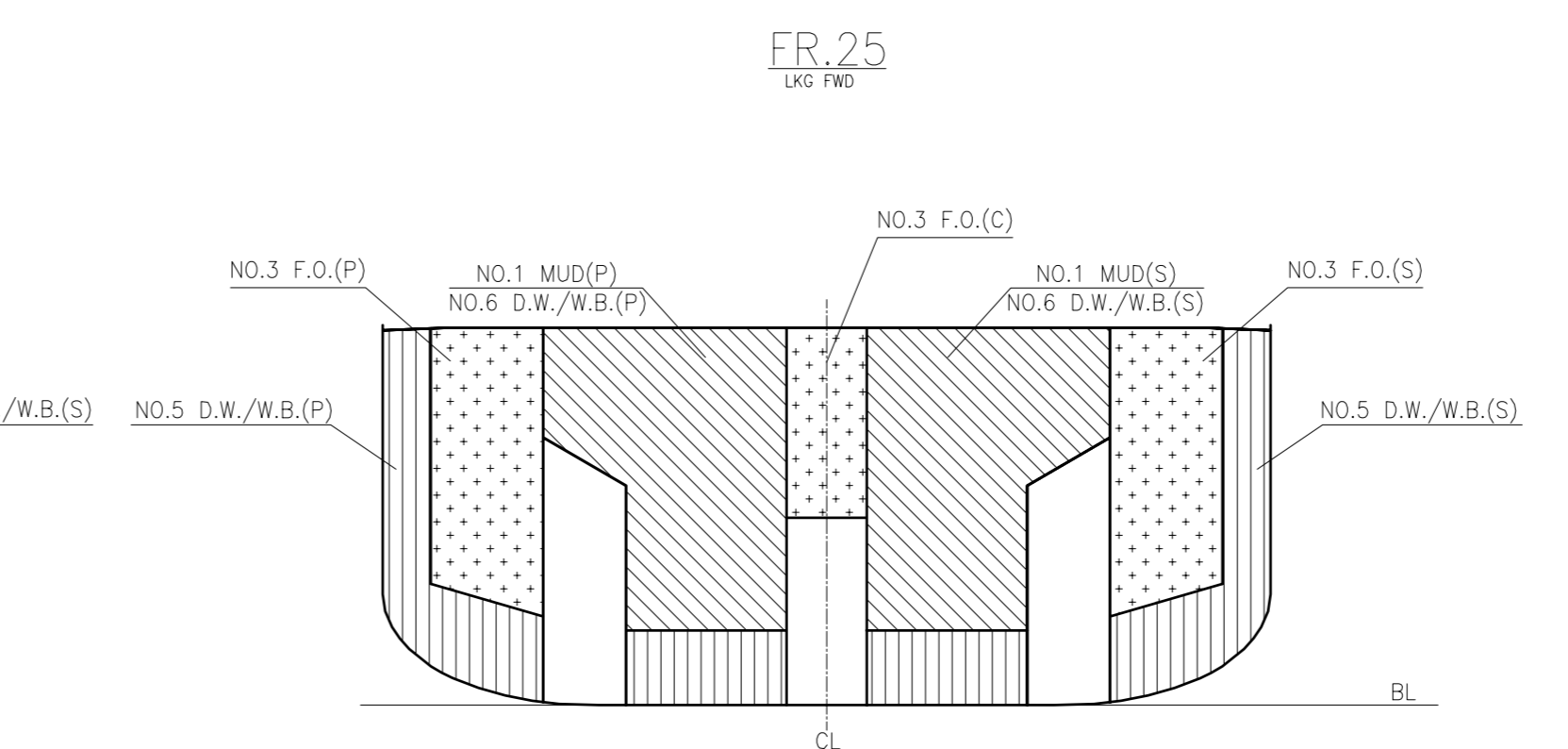
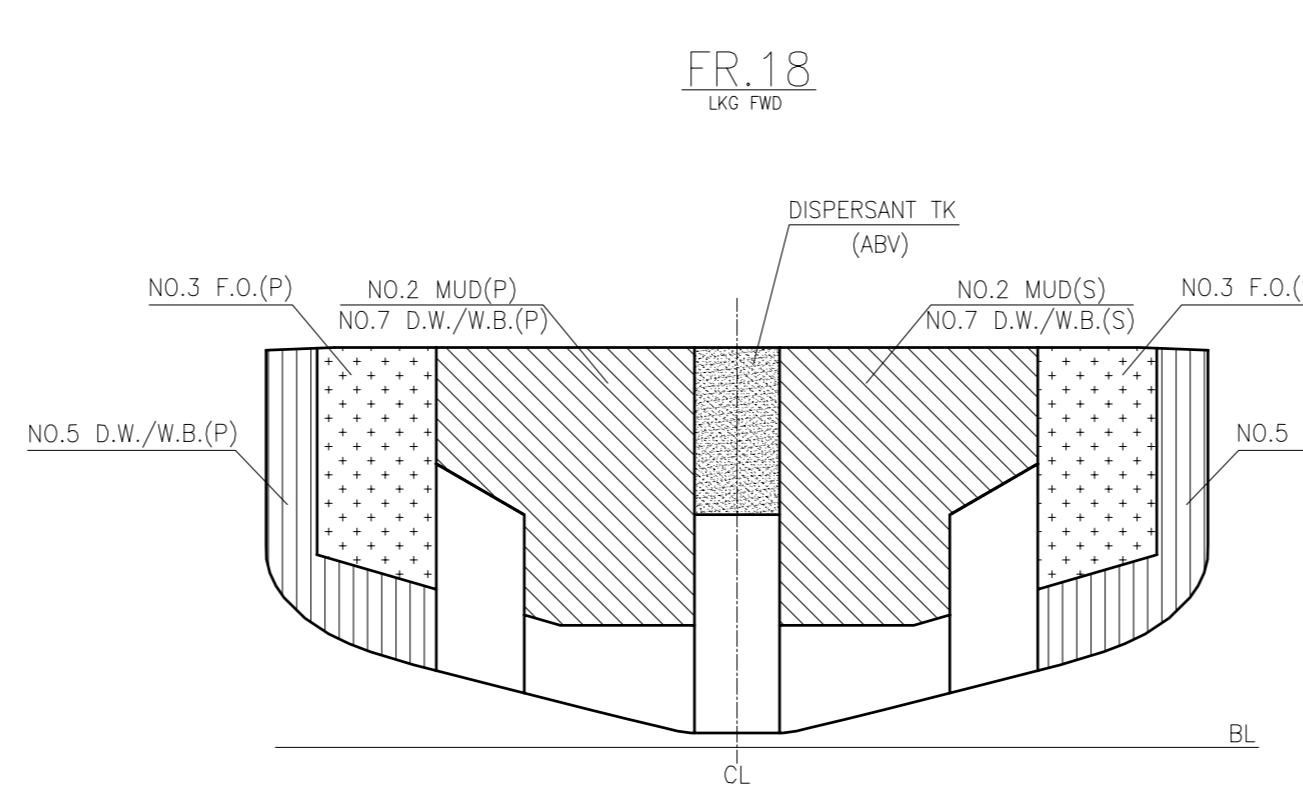
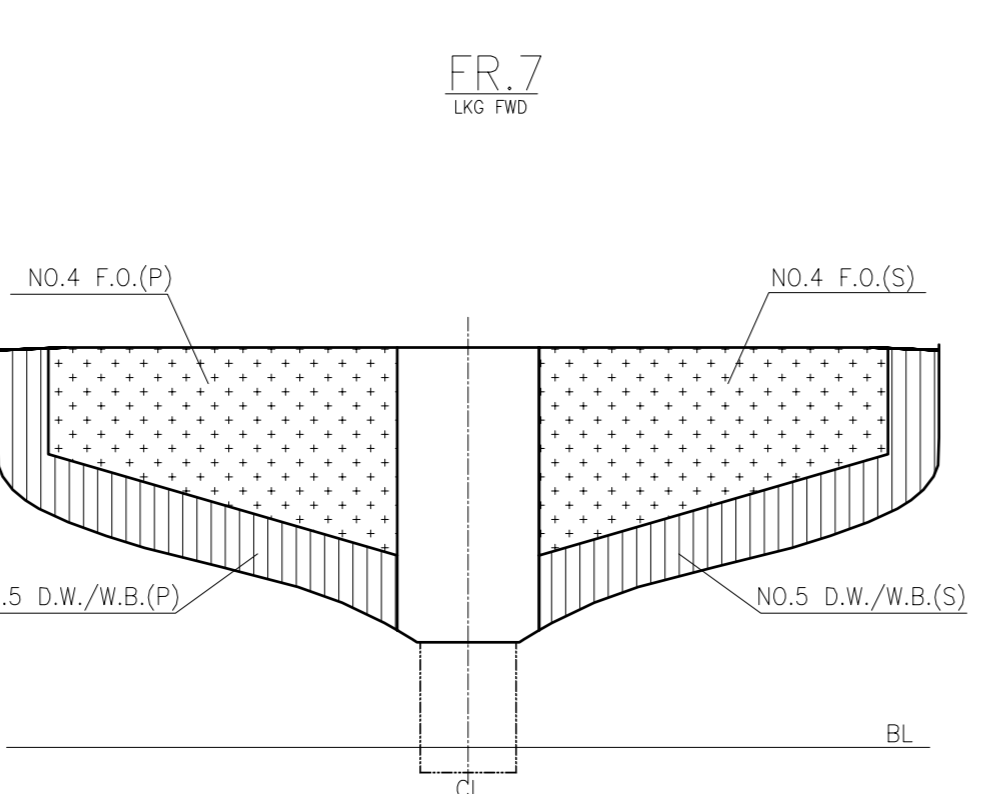
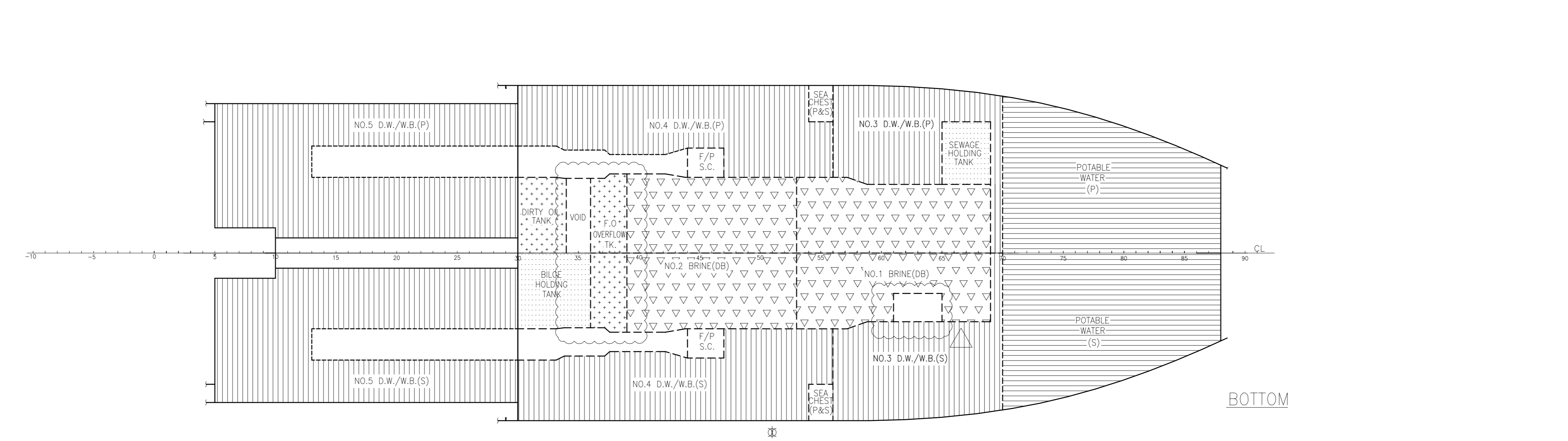
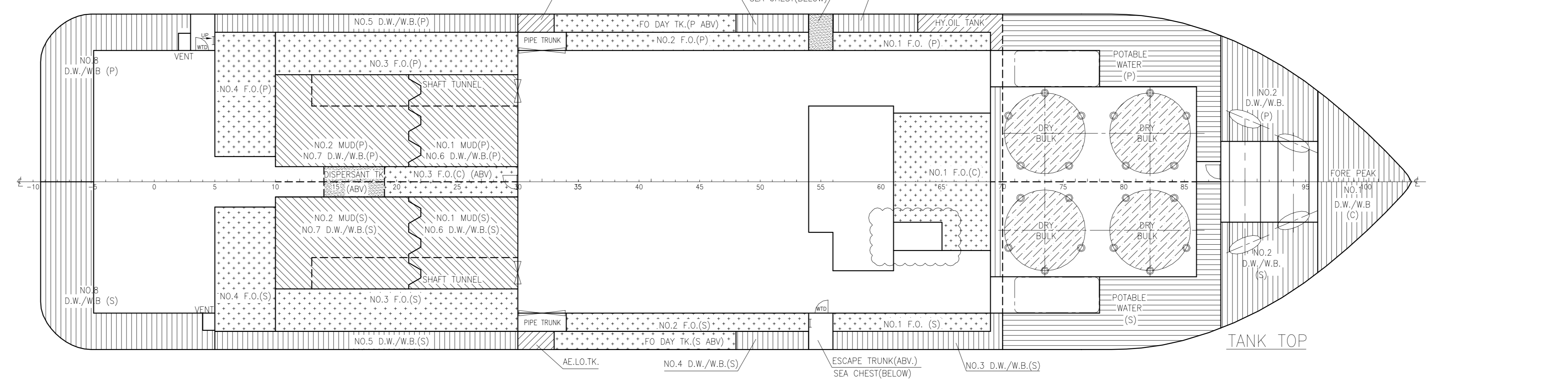
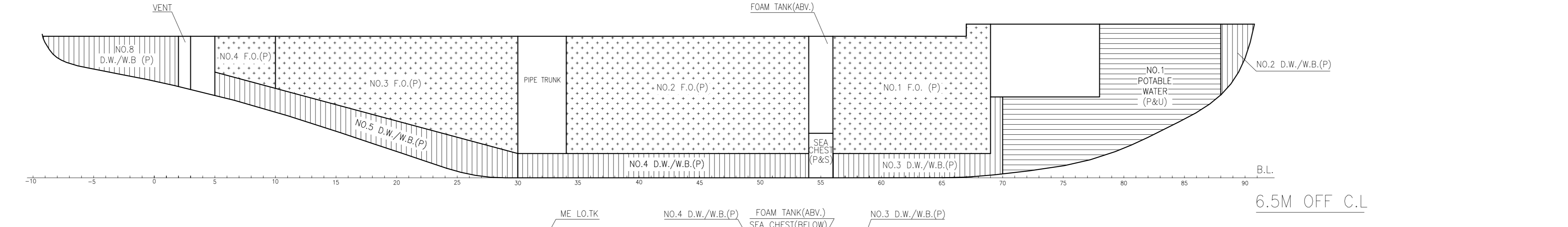
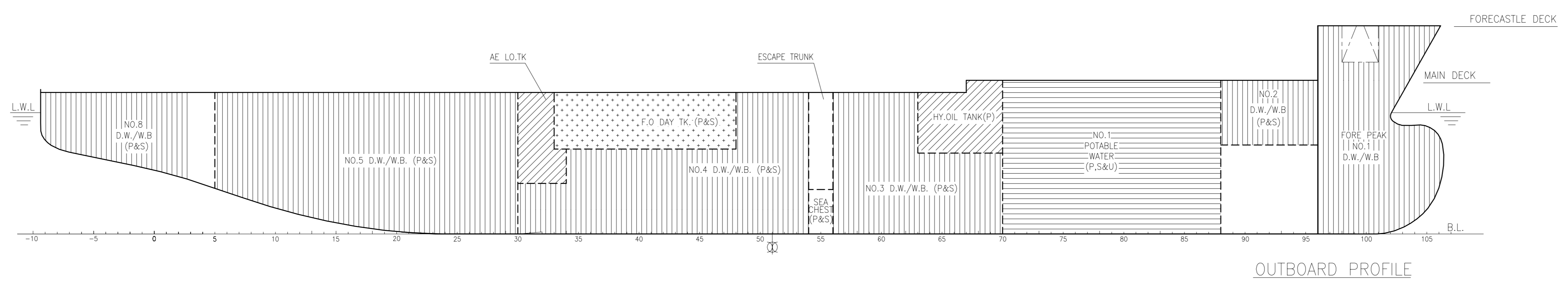
MUD TANK					
COMPARTMENT	LOCATION (FRAMES)	CAPACITY		CENTRE OF GRAVITY	
		VOLUME 100% m³	WEIGHT 100% TON	L.C.G. (MIDSHIP) m	V.C.G. (B.L.) m
MUD TANK 1(P)	F21+0.3 ~ F30	105.680		-15.110	4.470
MUD TANK 1(S)	F21+0.3 ~ F30	105.680		-15.110	4.470
MUD TANK 2(P)	F10 ~ F21+0.3	118.720		-21.110	5.020
MUD TANK 2(S)	F10 ~ F21+0.3	118.720		-21.110	5.020
SUM		448.800			

DRY BULK TANK					
COMPARTMENT	LOCATION (FRAMES)	CAPACITY		CENTRE OF GRAVITY	
		VOLUME 100% m³	WEIGHT 100% TON	L.C.G. (MIDSHIP) m	V.C.G. (B.L.) m
DRY BULK TANK	F70 ~ F86	249.216			
SUM					

BRINE TANK					
COMPARTMENT	LOCATION (FRAMES)	CAPACITY		CENTRE OF GRAVITY	
		VOLUME 100% m³	WEIGHT 100% TON	L.C.G. (MIDSHIP) m	V.C.G. (B.L.) m
NO. 1 BRINE TANK	F53 ~ F69	75.290		5.830	0.600
NO. 2 BRINE TANK	F39 ~ F53	75.390		-3.050	0.600
SUM		150.680			

WATER BALLAST TANKS (S.G. = 1.025 t/m³)					
COMPARTMENT	LOCATION (FRAMES)	CAPACITY		CENTRE OF GRAVITY	
		VOLUME 100% m³	WEIGHT 100% TON	L.C.G. (MIDSHIP) m	V.C.G. (B.L.) m
FORE PEAK TANK	F96 ~ F106+0.243	209.710	214.953	29.060	6.010
No.2 D.W./W.B. (P)	F88 ~ F96	47.620	48.811	24.180	6.200
No.2 D.W./W.B. (S)	F88 ~ F96	47.620	48.811	24.180	6.200
No.3 D.W./W.B. (P)	F56 ~ F70	110.600	113.365	8.360	2.830
No.3 D.W./W.B. (S)	F56 ~ F70	133.350	136.684	8.570	2.990
No.4 D.W./W.B.(P)	F30 ~ F56	116.330	119.238	-4.580	1.600
No.4 D.W./W.B.(S)	F30 ~ F56	116.330	119.238	-4.580	1.600
No.5 D.W./W.B. (P)	F5 ~ F30	168.710	172.928	-19.640	2.890
No.5 D.W./W.B. (S)	F5 ~ F30	168.710	172.928	-19.640	2.890
No.8 D.W./W.B.(P)	F-10+ .377 ~ F3	36.510	37.423	-32.780	5.950
No.8 D.W./W.B.(S)	F-10+ .377 ~ F5	41.250	42.281	-32.310	5.940
SUM		1196.740	1226.659		

MISCELLANEOUS TANK					
COMPARTMENT	LOCATION (FRAMES)	CAPACITY		CENTRE OF GRAVITY	
		VOLUME 100% m³	WEIGHT 98% TON	L.C.G. (MIDSHIP) m	V.C.G. (B.L.) m
ME. LO. TANK (P)	F30 ~ F34	10.460		-11.320	4.640
AE. LO. TANK (S)	F30 ~ F34	10.460		-11.320	4.640
SEA CHEST(P)	F54 ~ F56	4.260		2.400	1.180
SEA CHEST(S)	F54 ~ F56	4.260		2.400	1.180
S.C.F.P.(P)	F44 ~ F47	3.070		-3.300	0.600
S.C.F.P.(S)	F44 ~ F47	3.070		-3.300	0.600
VOID	F34 ~ F36	5.290		-9.600	0.600
DIRTY OIL TANK	F30 ~ F34	10.580		-11.400	0.600
BILGE HOLDING TANK	F30 ~ F36	15.880		-10.800	0.600
HYD. OIL TANK (P)	F63 ~ F70	14.050		9.630	5.670
DISPERSANT (ABV)	F14 ~ F19	12.350		-20.660	5.650
SEWAGE TANK	F65 ~ F69	8.700		9.590	0.600
FOAM	F54 ~ F56	10.230		2.400	4.620
F.O OVERFLOW TK.	F36 ~ F39	16.130		-8.070	0.600
ESCAPE TRUNK	F54 ~ F56	10.230		2.400	4.620



**PRINCIPAL PARTICULARS**  
 LENGTH OA \_\_\_\_\_ 69.90m  
 LENGTH BP \_\_\_\_\_ 61.20m  
 BEAM MLD. \_\_\_\_\_ 16.60m  
 DEPTH MLD. \_\_\_\_\_ 7.00m  
 DRAFT DESIGNED \_\_\_\_\_ 5.80m  
 DRAFT SCANTLING \_\_\_\_\_ 6.00m  
 COMPLEMENT \_\_\_\_\_ 60 MEN

CLASS: ABS A1 OFFSHORE SUPPORT VESSEL  
 FIRE FIGHTING CLASS 1 AMS DPS-2

ISSUED FOR APPROVAL YP OCT-21-2008  
 P-1165  
 P-1165-C12  
 ABS