

57m ROV & Air Dive Support DP-2 Class Vessel



KEY FEATURES

- Fuel Efficient (Approx 65% fuel saving over traditional DSV)
 - Detailed fuel figures available on request
- Shallow Draft
- Accepted Safety Case (NOPSEMA & DMIRS)
- Emergency Hybrid Capability
- Twin Hull Providing Stable Platform
- 4 Point Mooring System
- Caters for up to 40 Personnel
- Dedicated ROV Control Room
- Dedicated Dive Control Room
- Integrated Dive Systems
- Integrated Survey and Positioning System
- 2 Built-in Decompression Chambers
- Fire Fighting Capabilities (FIFI 1)
- Deck Crane 6-16 Tonnes
- 45 Tonne A-Frame (Removable)

GENERAL INFORMATION

| | |
|-----------------|---------------------------------------------------------------------------------------------------------------------------------------------|
| BUILT: | Singapore 2014 |
| CLASSIFICATION: | ABS - ✕A1, DSV AIR, FFV 1, Offshore Support Vessel, SPS, ©, ✕AMS, ✕ACCU, ✕DPS-2, ENVIRO, GP, RRDA, UWILD, CRC, RW Certified to IMDG Code |
| CLASS TYPE: | ABS Class Air DSV (Catamaran) Diesel Electric |

DIMENSIONS

| | |
|-----------------|-------------|
| LENGTH OVERALL: | 57M |
| BEAM: | 16.00M |
| DRAFT: | 3.25M (Max) |
| GROSS TONNAGE: | 1475GT |
| DEADWEIGHT: | 250 MT |

PERFORMANCE

MAX. OPERATING SPEED: 10 Knots (Approx.)

CAPACITIES

| | |
|----------------|-----------------------------------------------|
| CARGO: | Up to 150 Tonnes |
| FUEL OIL: | 130 M ³ (Approx.) |
| POTABLE WATER: | 70m ³ plus water making facilities |
| DECK RATING: | 10.0 Tonne M ² |

CARGO DECK

| | |
|------------------|------------------------------|
| CLEAR DECK AREA: | 260 M ² (Approx.) |
| DECK LOAD: | 10.0 T/M ² |



TECHNICAL SPECIFICATIONS

HULL

Twin Keel Catamaran Steel Hull
 16.0M Open Transom Inside Safety Rails
 Rescue Zones Port & Starboard

MAIN MACHINERY

2 x Schottel STP 550 Stern Azimuth Thrusters
 2 x Bow Thrusters, TM300RT Thrustmasters (Tunnel/Azimuth)
 2 x 950 kW Cummins QSK38-DM
 2 x 400 kW Cummins QSK19-DM
 2 x 65kwhr, 48VDC Battery Systems connected to Main DC Bus System giving vessel unique ability to operate on battery power for 20 minutes at 4 knots
 1 x Aspin Kemp & Associate Power Management System

DECK EQUIPMENT

DECK CRANE: HS Marine Crane Model AKC 245HE4
 16 Tonne SWL @ 7.5m
 6 Tonne SWL @ 16m

ANCHORS: 4 x 2,000kgs Delta Flipper

AVAILABLE POWER: 2 x 250A maximum 3-phase / Neutral hard wired connections

AFT DECK: 10 x 32A 3-phase (no Neutral) 415v sockets
 6 x 15A 240v single phase sockets

STERN ROLLER: 50 Tonne

SHARK JAWS AND ANCHOR HANDLING PINS: 100 Tonne

OPTIONAL DECK EQUIPMENT

WORK WINCH: (ELECTRICAL) Double Drum Waterfall
 Upper Drum 20 Tonne (100M x 30MM)
 10 Tonne High Speed
 Lower Drum 20 Tonne (1200M x 32MM Wire)

POINT MOORING: (ELECTRICAL) EMS 4 Point Mooring System
 Electric Zone 2 Explosion Proof
 Drum Pull First Layer 37M/T
 Top Layer 5.3M/T / 0-73M/Min
 Drum Brake Holding 100M/T (First Layer)

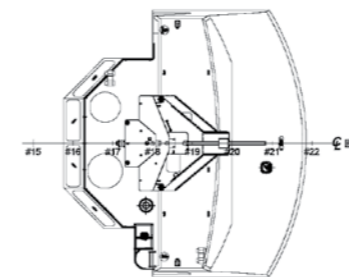
'A' FRAME: 45 Tonne (Harbour) with Integral 8 Tonne Winch (Electric)
 100M x 20M Wire
 22.5 Tonne Man Riding
 Able to Recover Hyperbaric Life Boat (HLB / SPHL)

MISCELLANEOUS EQUIPMENT

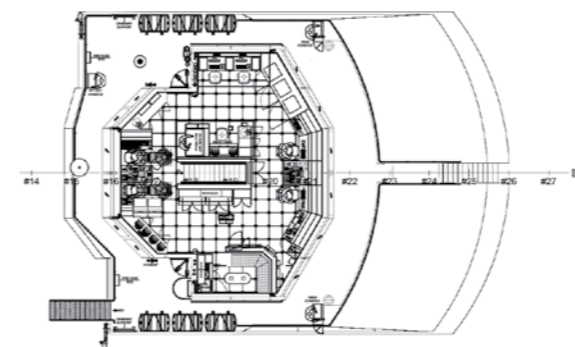
MARPOL COMPLIANT: Hamann Sewage Treatment Plant
SULLAGE TANK: Capacity 30m³
OILY WATER SEPARATOR: Boss
GAS DETECTION MONITORING SYSTEM: Detcon

WHEELHOUSE

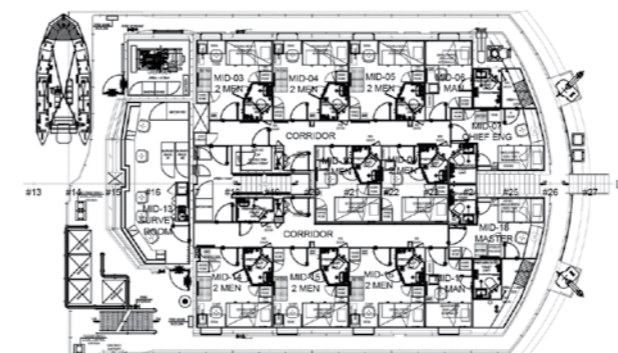
GYROCOMPASS: 3 x Raytheon STD22
AIS: Furuno FA-150
VDR: Furuno VR-3000
RADAR: Furuno, FAR-2837S and FAR-2827D
ECHO SOUNDER: McMurdo S4 & E5
AUTOPILOT: Raytheon Pilotstar-D
GMDSS: Furuno GP-150
SART & EPIRB: McMurdo S4 & E5
NAVTEX RECEIVER: Furuno NX-700A
GPS: Furuno GP-150
INMARSAT C EQUIP: SAILOR 6110 SAT-C
V-SAT: KNS SuperTrack Z10
CCTV SYSTEM: 18 PTZ Cameras (IMCOS)



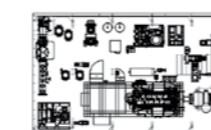
WHEELHOUSE TOP
(14,600 A.B.L.)



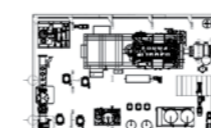
WHEELHOUSE DECK
(11,650 A.B.L.)



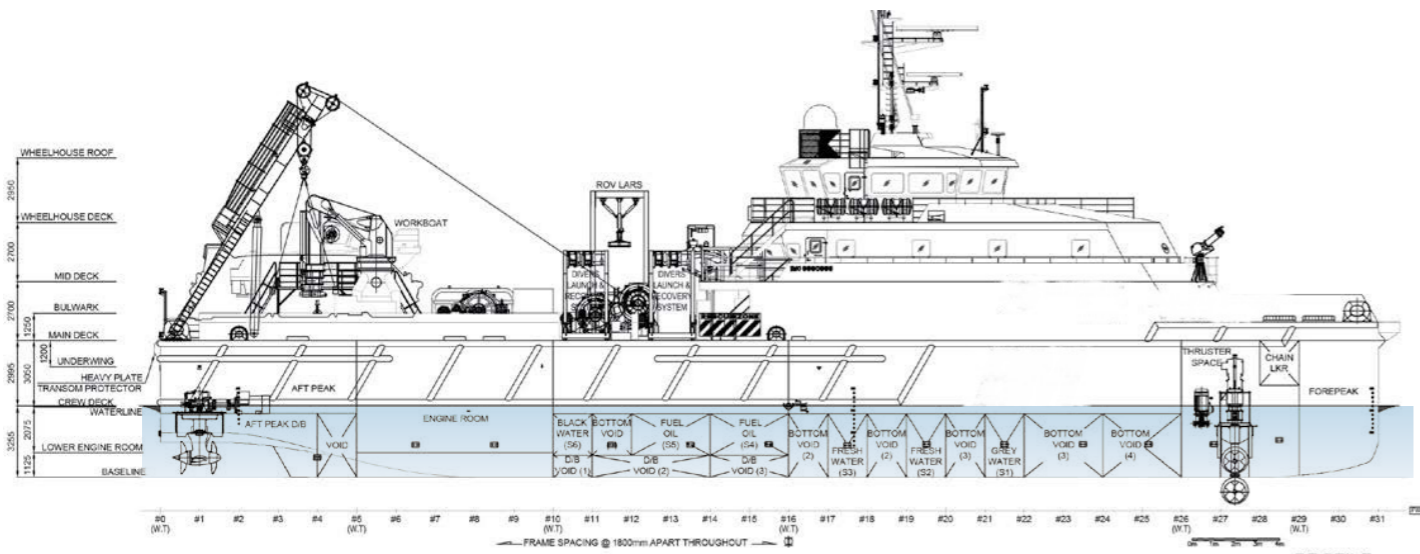
MID DECK
(8,950 A.B.L.)



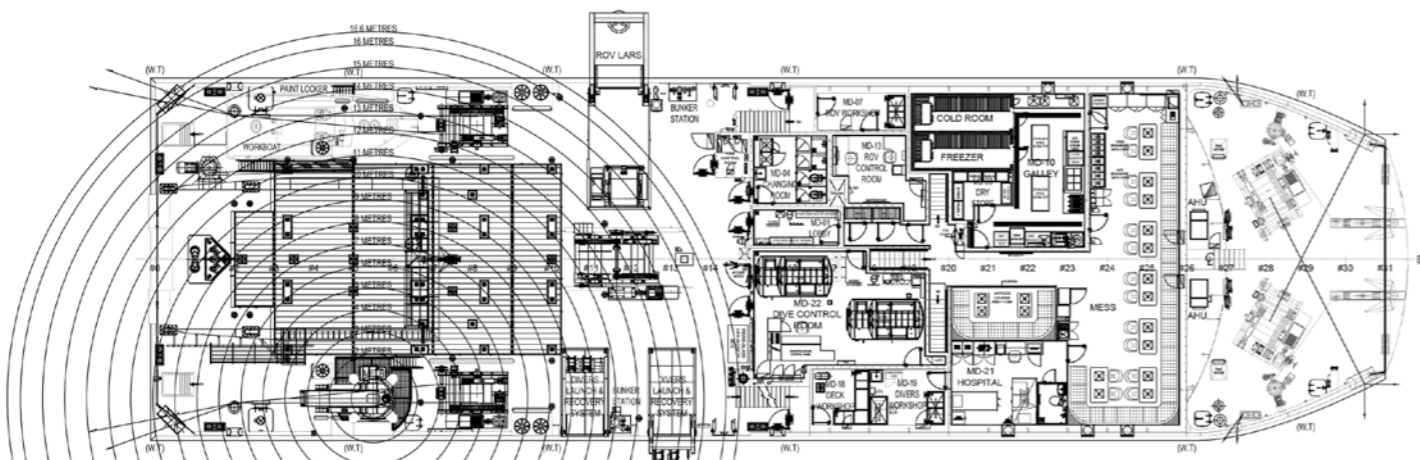
LOWER ENGINE ROOM
(1,125 A.B.L.)



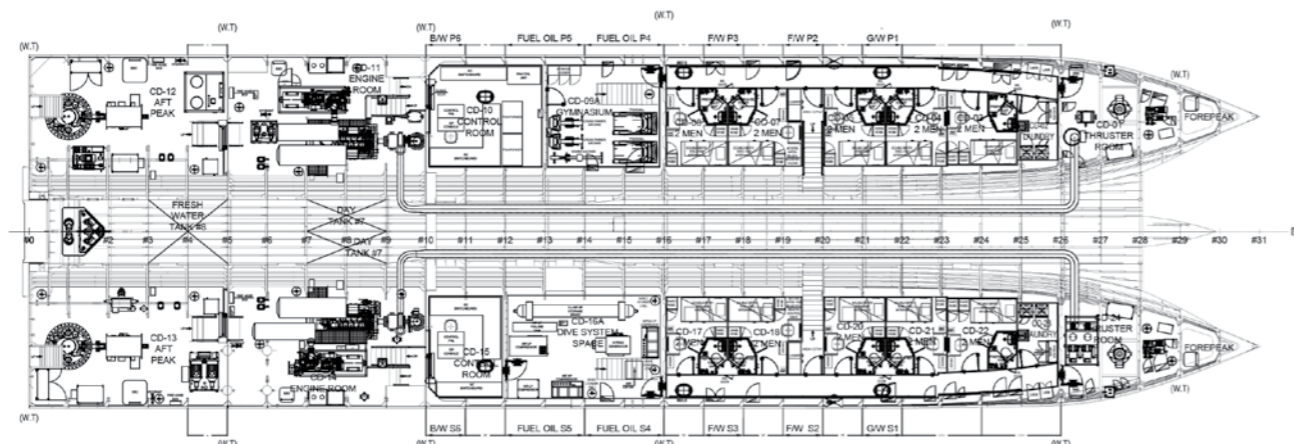
CREW DECK
(20x2 MEN = 20 MEN)



PROFILE



MAIN DECK
(6,250 A.B.L.)



CREW DECK
(20x2 MEN = 20 MEN)



57m ROV & Air Dive Support DP-2 Class Vessel

TECHNICAL SPECIFICATIONS

(CONTINUED)

REMOTELY OPERATED VEHICLE

FULLY INSTALLED WORK CLASS ROV: FCV 600
 Depth Rating 600msw
 Tether Management System (TMS)
 Schilling Manipulators
 - Seven Function (Orion)
 - Five Function (Rigmaster)

ROV CONTROL ROOM: Built into vessel, maintaining deck capacity

DIVING SYSTEMS

DEPTH RATING: 50m

DIVE LARS: 2 X Pommec Launch & Recovery Systems

CHAMBERS: 2 X Hytech 72" Twin Lock Deck Decompression Chambers

CLASSIFICATION: Air / Nitrox Diving System Built to ABS Classification Rules Enabling A1 Class Notation

SURVEY & INSPECTION SYSTEMS

VIDEO: MOXA - Fibre Optic Video and Data Sharing Network Between Survey, Diving and ROV

MBES: R2Sonic / Reson Hull Mounted Flange

OFFICE: Dedicated Fully Equipped Office c/w 4x Workstations

DYNAMIC POSITIONING SYSTEMS

DP: Kongsberg K-POS DPS2 (IMO DP Class 2) - Sensors

POSITIONING: Veripos LD5-GG2 DGNSS System
 Kongsberg 360° RADIUS Relative Positioning System
 Kongsberg Spot Track Reference System

USBL: Sonardyne Ranger 2 Pro USBL (retractable)

MRU: Kongsberg, 3 x units

GILL WIND SENSOR: 3 x units

GYROCOMPASS: 3 x Raytheon STD 22

ACCOMMODATION

MID DECK: Master's Cabin with Ensuite
 Engineer's Cabin with Ensuite
 8 x 2 Berth Cabins with Ensuite
 2 x 1 Berth Cabins with Ensuite
 Large Client Office / Survey Room

MAIN DECK: Large Galley
 Dining Area for 30
 Hospital
 2 x Showers, 2 x Toilets & Change Room
 Laundry
 Workshops / Gear Store
 Dive / ROV Control Office

PORT HULL: 5 x 2 Berth Cabins with Ensuite
 All Cabins include TV / DVD
 Laundry
 Fully Equipped Gymnasium

STARBOARD HULL: 5x 2 Berth Cabins with Ensuite
ALL: Laundry
 All Cabins incl. Sat TV / DVD & Internet