

Technical Specifications

LEG

Leg Length	140 ft
Leg Diameter (Od)	48 in
Leg Tower Height	12 ft

HULL

Length (Overall)	103 ft
Length (Barge Only)	84 ft
Beam (Overall)	78 ft
Beam (Barge Only)	48 ft
Hull Depth	8 ft

PAD

Length	25 ft
Width	18 ft
Depth	3.5 ft
Bearing Load	2,900 lbs/ft ²
Design	2-Way Slope

CRANE

	Port	Starboard
Load Rating	60 ton	15 ton
Make	Bucyrus Erie	EBI
Model	MK 60	TC30-38-70
Boom Type	Lattice	Telescopic
Boom Length	100 ft	70 ft
Crane Inst. Type	Deck Mount	Deck Mount

PROPULSION

Mains - Make	GM
Mains - Model	12V71
Horsepower	800 hp
Bow Thruster Equipped	No
Clutch Make/Reduction	Twin Disc 6.17:1
Consumption/Engine-Full	19.4 gph
Consumption/Engine-Half	9.7 gph

GENERATORS

Generator Engine Make	GM
Generator Engine Model	8V71
Generator Output	125 kw
Consumption/Gen	10 gph

DECK

Total Deck Area	4,716 ft ²
Clear Deck Area	2,312 ft ²
Additional Clear Area	1,334 ft ²
Maximum Deck Load	300,000

CAPACITIES

Diesel Fuel	9,222 usg
Lube	304 usg
Hydraulic Oil	1,347 usg
Potable Water	13,700 usg
Watermaker Equipped	No

ELECTRONIC AIDS & COMMUNICATION

Compass	Fully Equipped
Gps/Dgps	Fully Equipped
Radar(s)	Fully Equipped
Fathometer	Fully Equipped
Loudhailer	Fully Equipped
Satellite Phone	Fully Equipped
VHF Radio	Fully Equipped
Single Sideband Radio	Fully Equipped
EPIRB	Fully Equipped
GMDSS	No

PERSONNEL ACCOMMODATIONS

Total Accommodations	28
VIP Accommodations	3
Galley & Dining	Fully Equipped
TV Lounge	Fully Equipped
Laundry Facility	Fully Equipped
Air Condition / Heater	Std Central Units

PERFORMANCE

Estimated Speed	4 knots
Max Sep – Pad to Deck	133 ft
Max Working Water Depth	108 ft
Min Working Water Depth	8 ft

DOCUMENTATION

Class	None
USCG	Inspected
SOLAS	No

Year Built 1980

Registered Tonnage 90
International Tonnage 498

BUCYRUS ERIE 60 TON CRANE

MK 60 100 FT LATTICE BOOM MAXIMUM SAFE WORKING LOAD

BOOM RADIUS (ft)	ONBOARD LOAD (lbs.)	OFFBOARD LOAD (lbs.)
20	105,000	70,000
25	98,000	65,000
30	92,000	61,000
35	86,000	57,000
40	78,000	52,000
45	70,000	46,500
50	62,000	41,000
55	56,000	37,000
60	50,000	33,000
65	45,000	30,000
70	41,000	27,000
75	36,000	24,000
80	31,000	20,500
85	28,000	18,500
90	24,000	16,000
95	21,000	14,000
100	17,000	11,000
105	14,000	9,000

FAST LINE RATED FOR 9,000 LBS AT ALL RADII

EBI 15 TON CRANE

TC 30-38-70 70 FT TELESCOPIC BOOM MAXIMUM SAFE WORKING LOAD

38 FT BOOM RETRACTED

BOOM RADIUS (ft)	ONBOARD LOAD (lbs.)	OFFBOARD LOAD (lbs.)
10	30,000	20,000
15	21,000	14,000
20	15,500	10,333
25	12,300	8,200
30	9,800	6,533
35	7,200	4,800
38	3,900	2,600

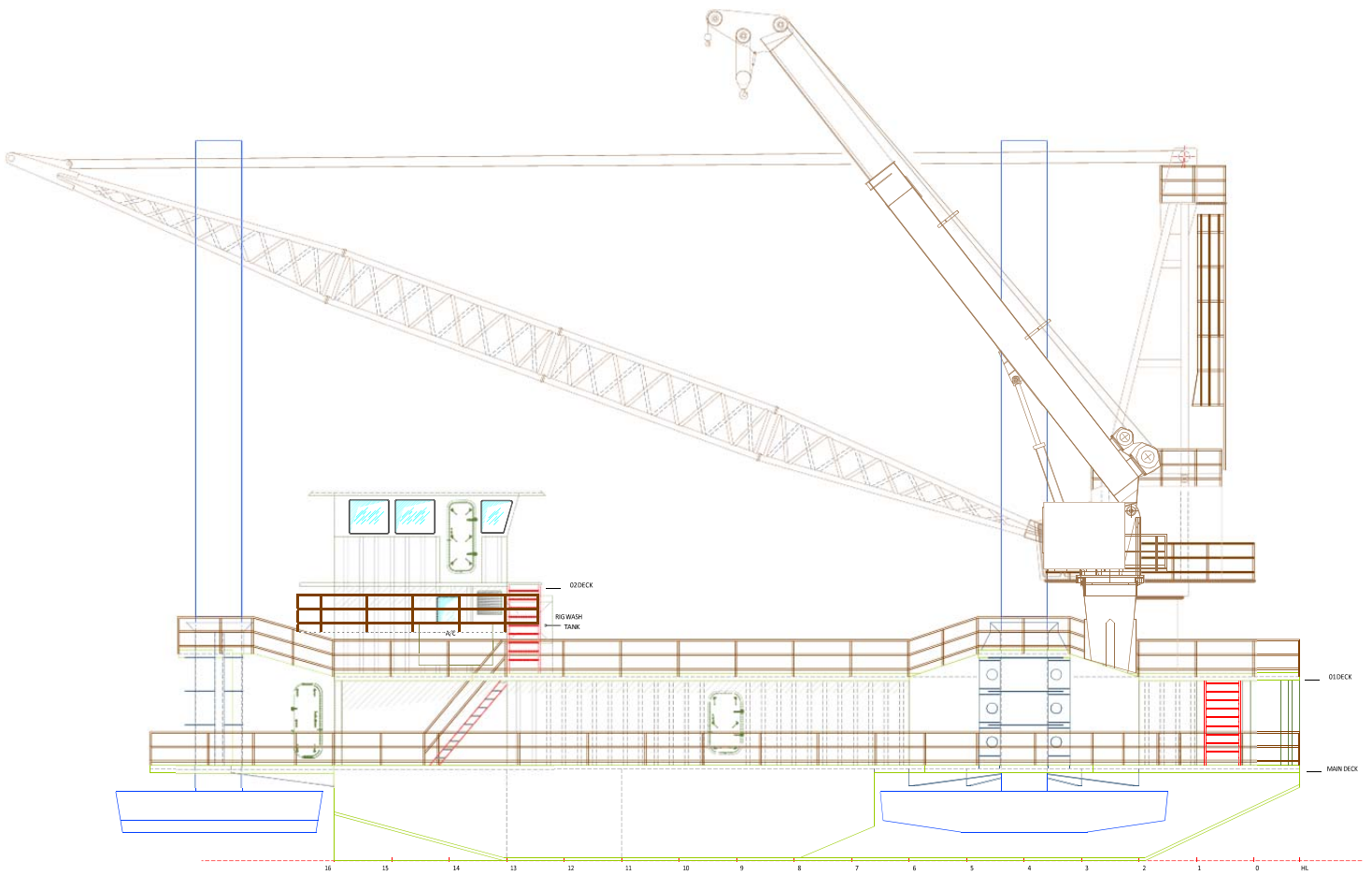
FAST LINE RATED FOR 4,600 LBS UP TO 35 FT

70 FT BOOM EXTENDED

BOOM RADIUS (ft)	ONBOARD LOAD (lbs.)	OFFBOARD LOAD (lbs.)
10	30,000	20,000
15	20,000	13,333
20	15,000	10,000
25	11,000	7,333
30	9,500	6,333
35	7,808	5,206
40	6,700	4,467
45	5,800	3,867
50	4,900	3,267
55	4,200	2,800
60	3,400	2,267
65	2,700	1,800
70	1,100	733

FAST LINE RATED FOR 3,267 LBS UP TO 50 FT

Outboard Profile

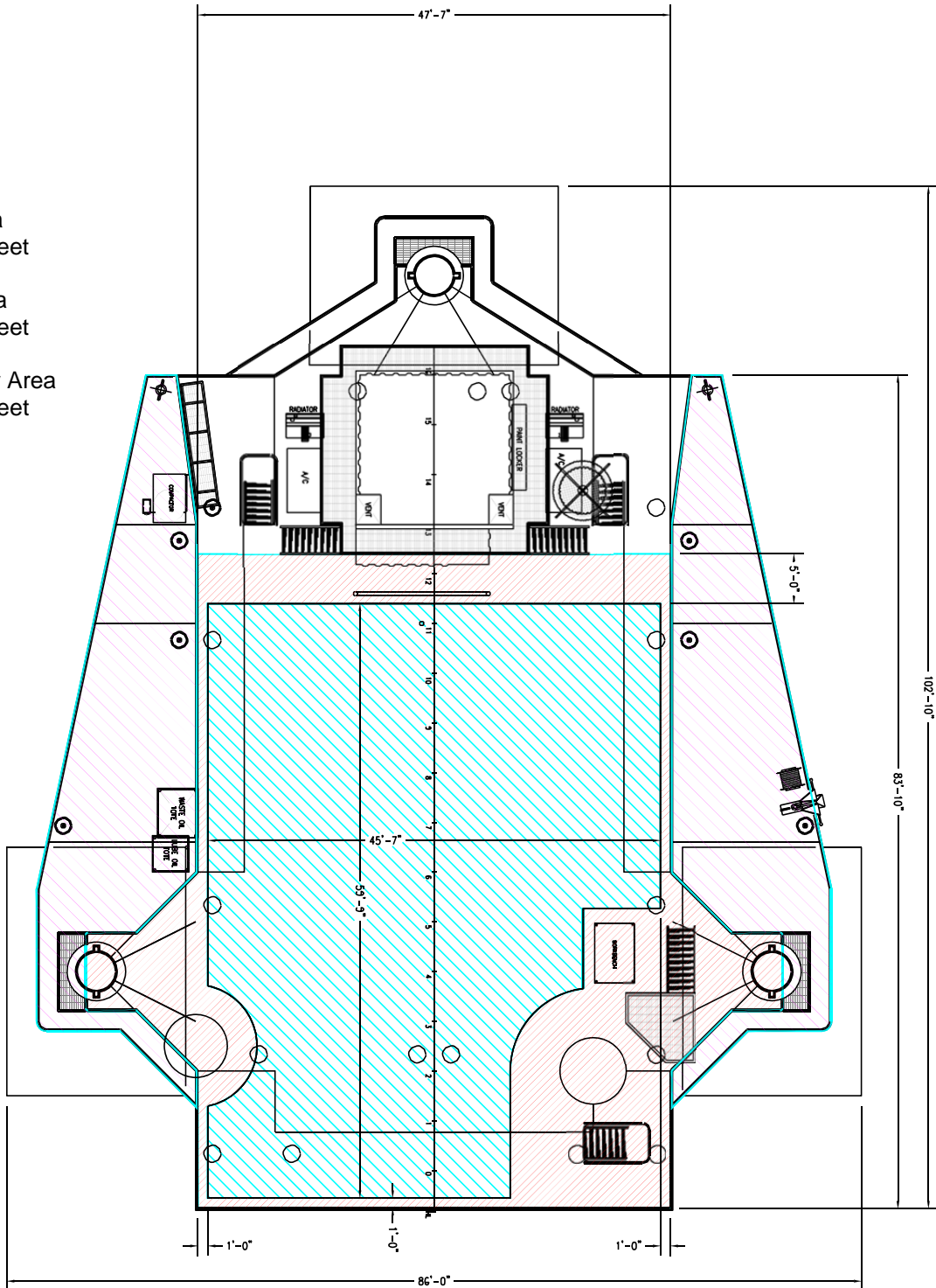


OPEN DECK AREA

Total Deck Area
4,716 Square Feet

Clear Deck Area
2,312 Square Feet

Additional Clear Area
1,334 Square Feet



Main Deck Quarters

