

Technical Specifications

LEG

Leg Length	150 ft
Leg Diameter (Od)	48 in
Leg Tower Height	21 ft

HULL

Length (Overall)	106.5 ft
Length (Barge Only)	90 ft
Beam (Overall)	69 ft
Beam (Barge Only)	48 ft
Hull Depth	8 ft

PAD

Length	25 ft
Width	14 ft
Depth	2 ft
Bearing Load	N/A
Design	2-Way Slope

CRANE

	Port	Starboard
Load Rating	70 ton	35 ton
Make	OECO	OECO
Model	99C039	99C035
Boom Type	Fixed	Telescopic
Boom Length	80 ft	70 ft
Crane Inst. Type	Deck Mount	Deck Mount

PROPULSION

Mains - Make	GM
Mains - Model	16V71
Horsepower	1280 hp
Bow Thruster Equipped	No
Clutch Make/Reduction	Twin Disc 3.86:1
Consumption/Engine-Full	25.5 gph
Consumption/Engine-Half	12.75 gph

GENERATORS

Generator Engine Make	GM
Generator Engine Model	6-71
Generator Output	99 kw
Consumption/Gen	9.6 gph

DECK

Total Deck Area	2,754 ft ²
Clear Deck Area	1,719 ft ²
Additional Clear Area	N/A
Maximum Deck Load	200,000

CAPACITIES

Diesel Fuel	6,800 usg
Lube	461 usg
Hydraulic Oil	935 usg
Potable Water	7,192 usg
Watermaker Equipped	No

ELECTRONIC AIDS & COMMUNICATION

Compass	Fully Equipped
Gps/Dgps	Fully Equipped
Radar(s)	Fully Equipped
Fathometer	Fully Equipped
Loudhailer	Fully Equipped
Satellite Phone	Fully Equipped
VHF Radio	Fully Equipped
Single Sideband Radio	Fully Equipped
EPIRB	Fully Equipped
GMDSS	No

PERSONNEL ACCOMMODATIONS

Total Accommodations	29
VIP Accommodations	2
Galley & Dining	Fully Equipped
TV Lounge	Fully Equipped
Laundry Facility	Fully Equipped
Air Condition / Heater	Std Central Units

PERFORMANCE

Estimated Speed	5 knots
Max Sep – Pad to Deck	125 ft
Max Working Water Depth	100 ft
Min Working Water Depth	7.5 ft

DOCUMENTATION

Class	None
USCG	Inspected
SOLAS	No

Year Built 1981

Registered Tonnage 194
International Tonnage None

OECO 70 TON CRANE*

99C039

80 FT FIXED BOOM

MAXIMUM SAFE WORKING LOAD

BOOM RADIUS (ft)	ONBOARD LOAD (lbs.)	OFFBOARD LOAD (lbs.)
11.84	76,000	50,667
27.15	66,000	44,000
40.68	46,000	30,667
51.26	36,000	24,000
61.35	29,000	19,333
69.86	25,000	16,667
74.42	20,000	13,333
78.97	17,000	11,333
80.00	12,000	8,000

FAST LINE RATED FOR 8,000 LBS AT ALL RADII

*CURRENT CONFIGURATION IS FOR 35 TONS

OECO 35 TON CRANE

99C035

70 FT TELESCOPIC BOOM

MAXIMUM SAFE WORKING LOAD

50 FT BOOM RETRACTED

BOOM RADIUS (ft)	ONBOARD LOAD (lbs.)	OFFBOARD LOAD (lbs.)
8	76,140	50,760
10	63,780	42,520
18	36,600	24,400
26	26,800	17,867
33	21,600	14,400
39	18,300	12,200
44	15,900	10,600
47	13,900	9,267
49	12,000	8,000
50	9,800	6,533

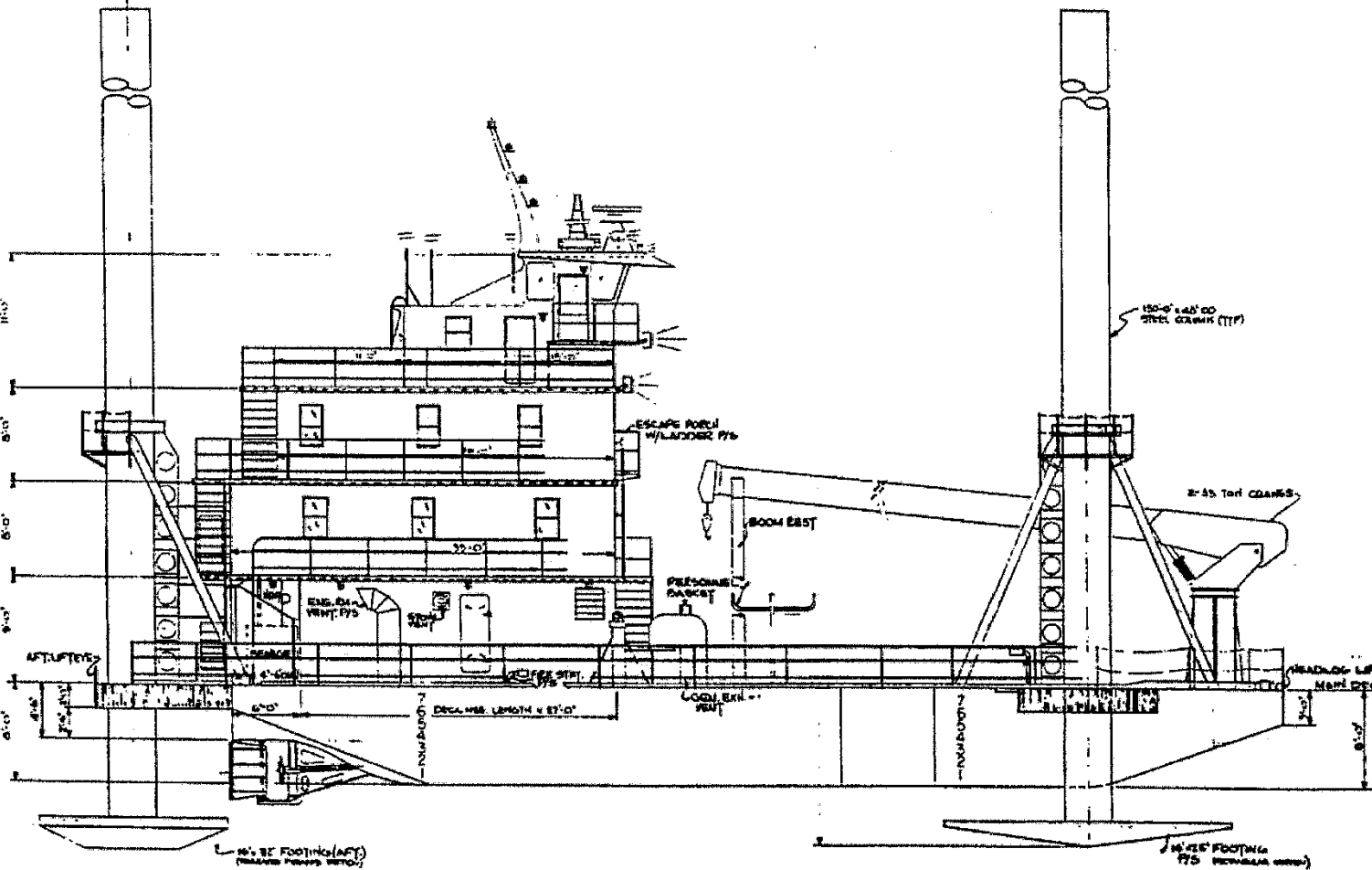
FAST LINE RATED FOR 3,567 AT ALL RADII

70 FT BOOM EXTENDED

BOOM RADIUS (ft)	ONBOARD LOAD (lbs.)	OFFBOARD LOAD (lbs.)
11	55,700	37,133
13	46,100	30,733
25	25,600	17,067
36	18,300	12,200
46	14,500	9,667
54	12,100	8,067
61	10,300	6,867
66	8,900	5,933
69	7,500	5,000
70	5,900	3,933

FAST LINE RATED FOR 3,567 LBS AT ALL RADII

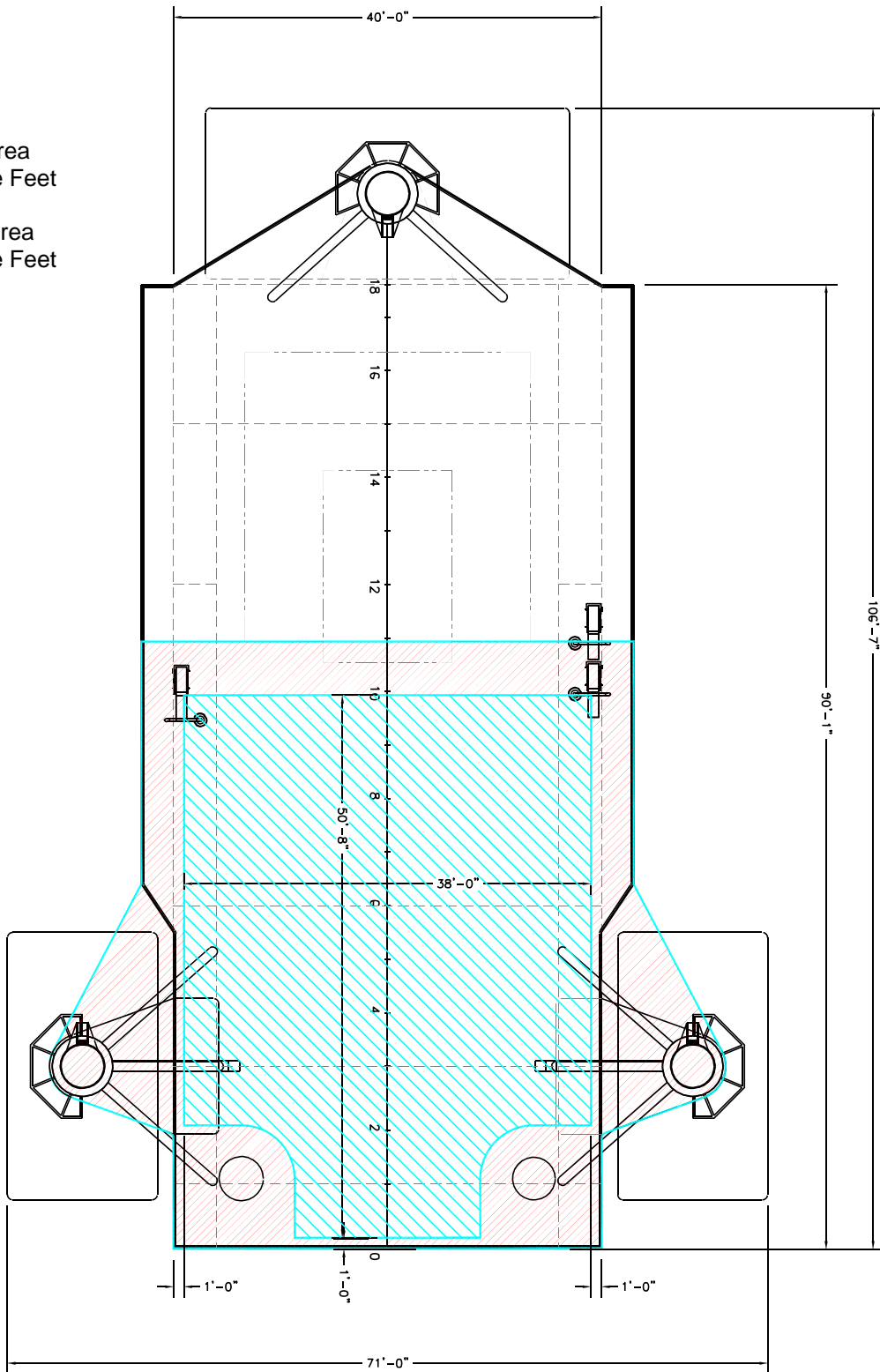
Outboard Profile



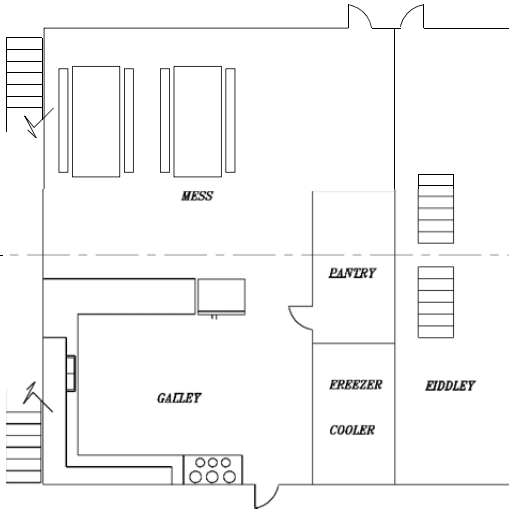
Open Deck Area

Total Deck Area
2,754 Square Feet

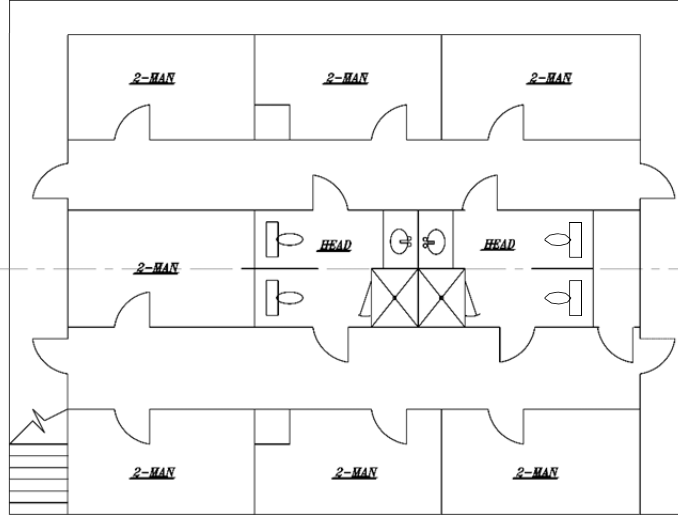
Clear Deck Area
1,719 Square Feet



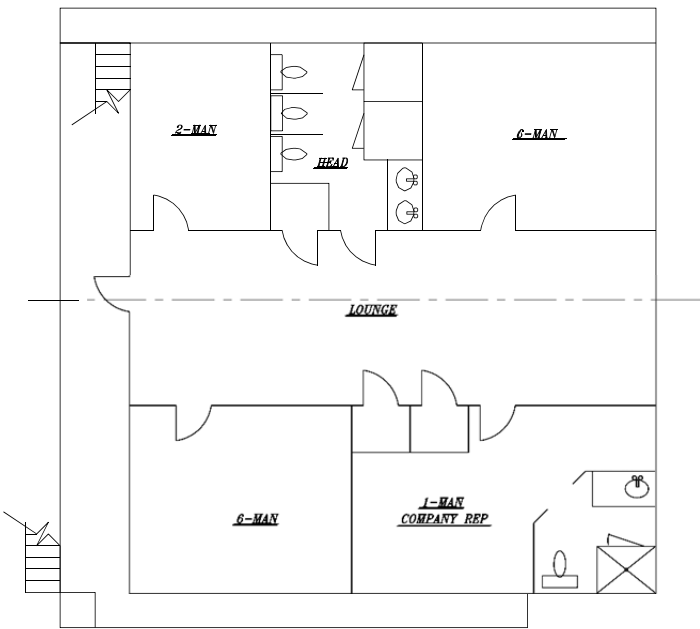
Main Deck Quarters



01 Level Quarters



02 Level Quarters



Pilothouse

