

Technical Specifications

LEG

Leg Length	215 ft
Leg Diameter (Od)	66 in
Leg Tower Height	33 ft

HULL

Length (Overall)	123.5 ft
Length (Barge Only)	110 ft
Beam (Overall)	77 ft
Beam (Barge Only)	73 ft
Hull Depth	10 ft

PAD

Length	40 ft
Width	18 ft
Depth	4 ft
Bearing Load	N/A
Design	4-Way Slope

CRANE

	Port	Starboard	Stern
Load Rating	70 ton	15 ton	3 ton
Make	OECO	OECO	OECO
Model	99C039	99C02	
Boom Type	Fixed	Telescopic	Fixed
Boom Length	80 ft	70 ft	51 ft
Crane Inst. Type	Deck Mount	Deck Mount	Deck Mount

PROPULSION

Mains - Make	GM
Mains - Model	12V71
Horsepower	1600 hp
Bow Thruster Equipped	No
Clutch Make/Reduction	Twin Disc 3:1
Consumption/Engine-Full	19.4 gph
Consumption/Engine-Half	9.7 gph

GENERATORS

Generator Engine Make	GM
Generator Engine Model	12V71
Generator Output	250 kw
Consumption/Gen	19.4 gph

DECK

Total Deck Area	5,058 ft ²
Clear Deck Area	2,950 ft ²
Additional Clear Area	N/A
Maximum Deck Load	500,000

CAPACITIES

Diesel Fuel	39,370 usg
Lube	1,719 usg
Hydraulic Oil	4,019 usg
Potable Water	24,508 usg
Watermaker Equipped	No

ELECTRONIC AIDS & COMMUNICATION

Compass	Fully Equipped
Gps/Dgps	Fully Equipped
Radar(s)	Fully Equipped
Fathometer	Fully Equipped
Loudhailer	Fully Equipped
Satellite Phone	Fully Equipped
VHF Radio	Fully Equipped
Single Sideband Radio	Fully Equipped
EPIRB	Fully Equipped
GMDSS	Fully Equipped

PERSONNEL ACCOMMODATIONS

Total Accommodations	33
VIP Accommodations	2
Galley & Dining	Fully Equipped
TV Lounge	Fully Equipped
Laundry Facility	Fully Equipped
Air Condition / Heater	Std Central Units

PERFORMANCE

Estimated Speed	4 knots
Max Sep – Pad to Deck	182 ft
Max Working Water Depth	144 ft
Min Working Water Depth	10 ft

DOCUMENTATION

Class	None
USCG	Inspected
SOLAS	No
Year Built	1981
Registered Tonnage	491
International Tonnage	744

OECO 70 TON CRANE

C20B-50

80 FT FIXED BOOM

MAXIMUM SAFE WORKING LOAD

BOOM RADIUS (ft)	ONBOARD LOAD (lbs.)	OFFBOARD LOAD (lbs.)
11.84	76,000	50,667
27.15	66,000	44,000
40.68	46,000	30,667
51.26	36,000	24,000
61.35	29,000	19,333
69.86	25,000	16,667
74.42	20,000	13,333
78.97	17,000	11,333
80.00	12,000	8,000

OEEO 15 TON CRANE*

99C02 70 FT TELESCOPIC BOOM MAXIMUM SAFE WORKING LOAD

50 FT BOOM RETRACTED

BOOM RADIUS (ft)	ONBOARD LOAD (lbs.)	OFFBOARD LOAD (lbs.)
7	16,000	10,667
13	16,000	10,667
17	15,800	10,533
25	10,440	6,960
32	7,346	4,897
38	5,604	3,736
43	4,555	3,037
47	3,925	2,617
49	3,586	2,391
50	3,478	2,319

70 FT BOOM EXTENDED

BOOM RADIUS (ft)	ONBOARD LOAD (lbs.)	OFFBOARD LOAD (lbs.)
10	16,000	10,667
18	12,000	8,000
24	9,800	6,533
35	6,828	4,552
45	4,619	3,079
54	3,374	2,249
61	2,625	1,750
66	2,484	1,656
69	2,342	1,561
70	2,200	1,467

*CURRENT CONFIGURATION IS FOR 8 TONS

OEKO 3 TON CRANE

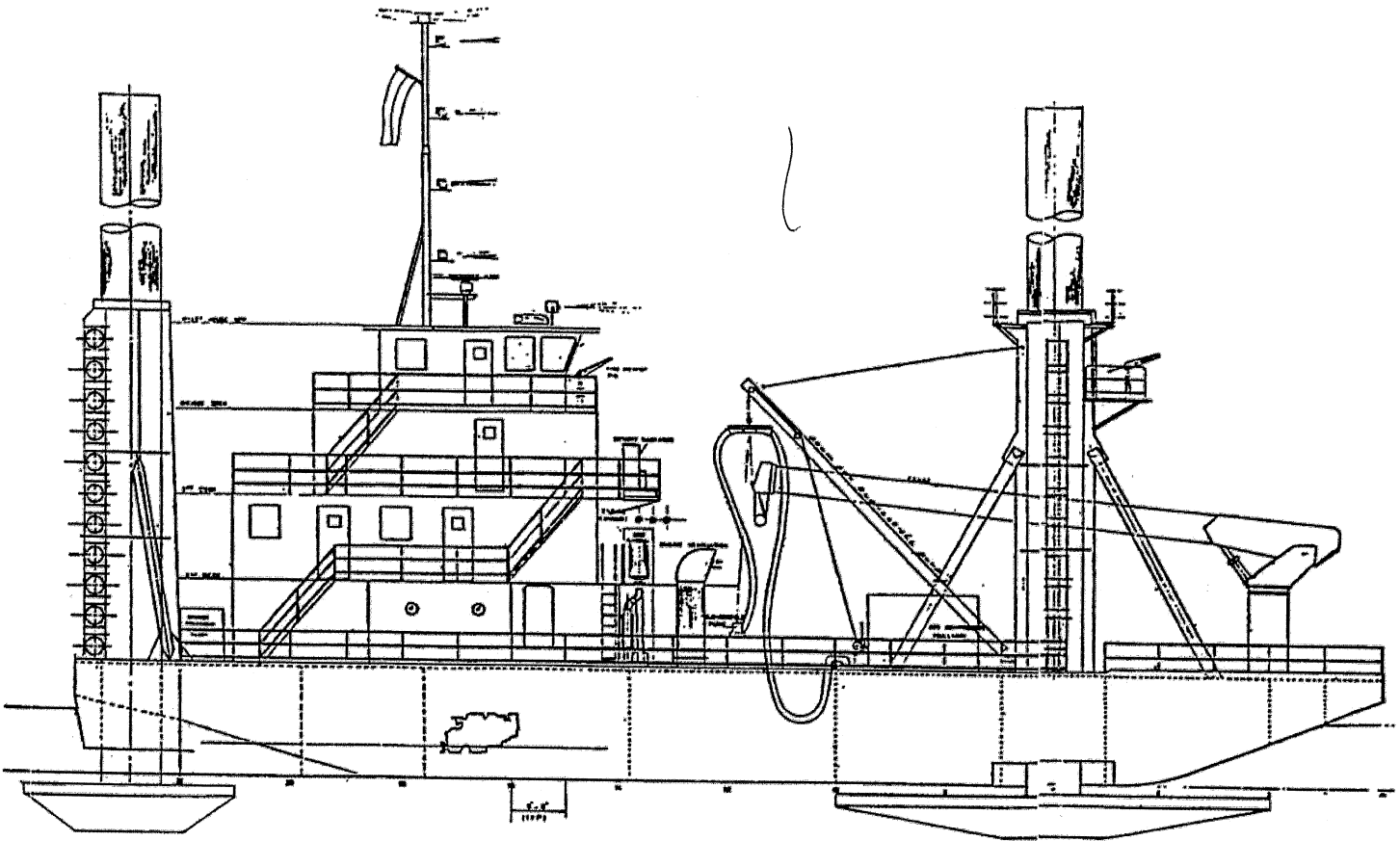
51 FT FIXED BOOM

MAXIMUM SAFE WORKING LOAD

BOOM RADIUS (ft)	ONBOARD LOAD (lbs.)	OFFBOARD LOAD (lbs.)
7	6,000	4,000
13	6,000	4,000
17	6,000	4,000
25	6,000	4,000
32	6,000	4,000
38	5,600	3,730
43	4,500	3,000
47	3,700	2,167
49	3,200	2,133
51	3,000	2,000

FAST LINE RATED FOR 2,000 LBS AT ALL RADII

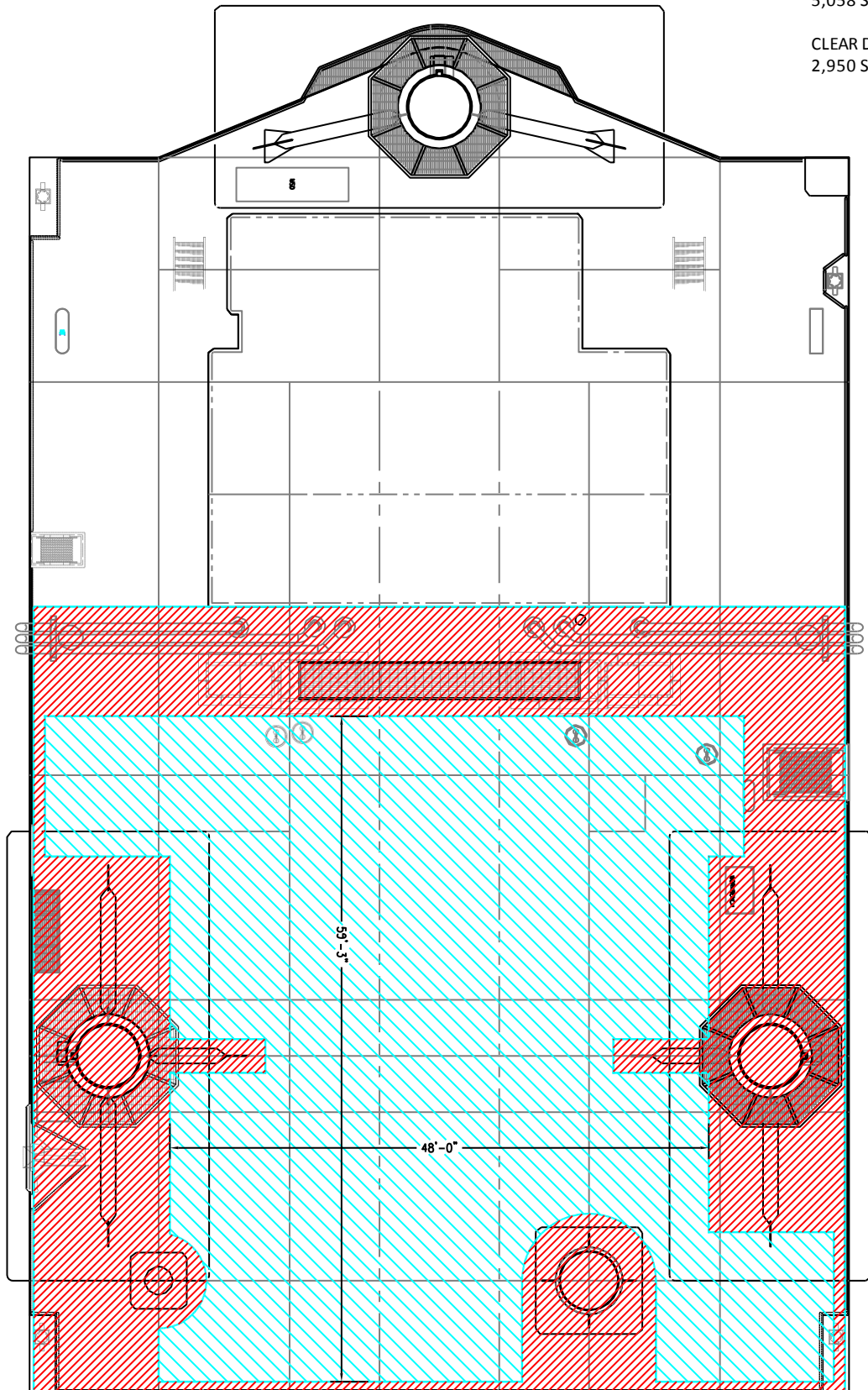
Outboard Profile



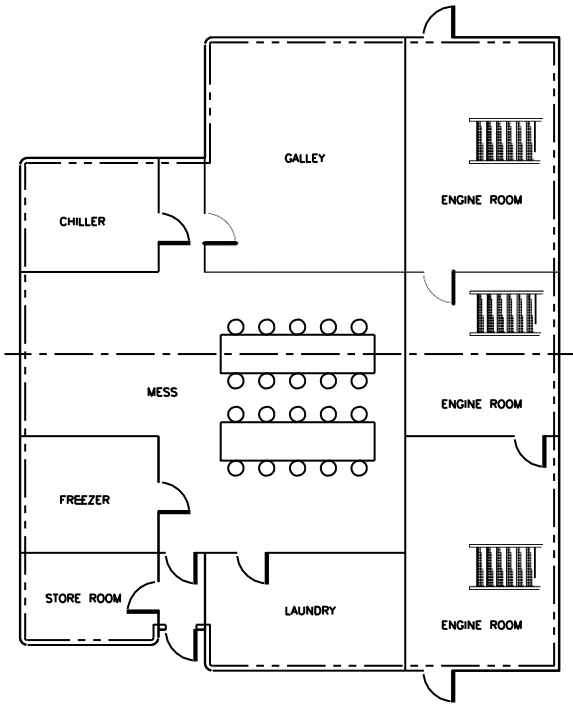
Open Deck Area

TOTAL DECK AREA
5,058 SQ FT

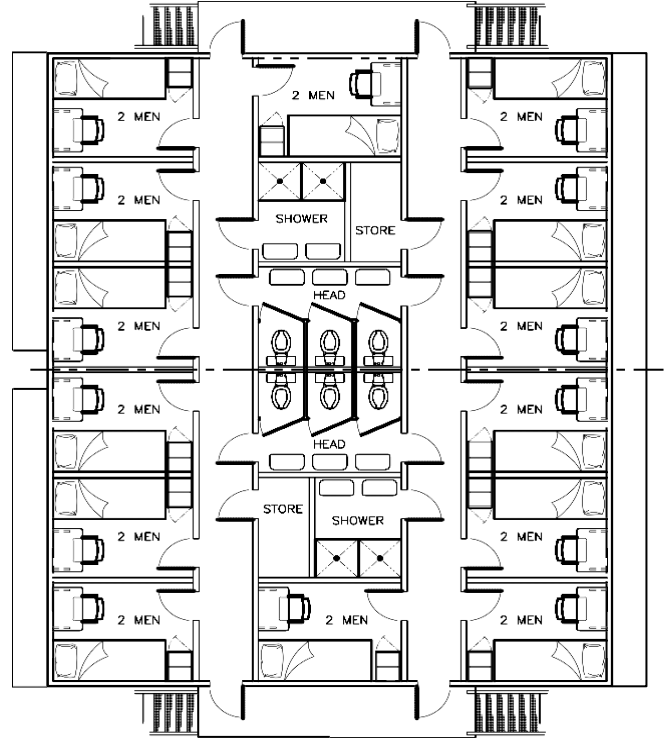
CLEAR DECK AREA
2,950 SQ FT



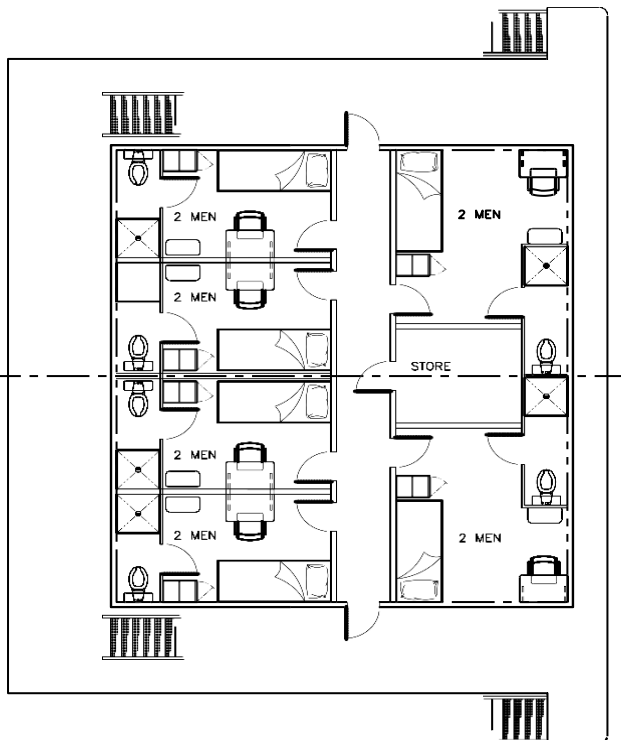
Main Deck Quarters



01 Level Quarters



02 Level Quarters



Pilothouse

