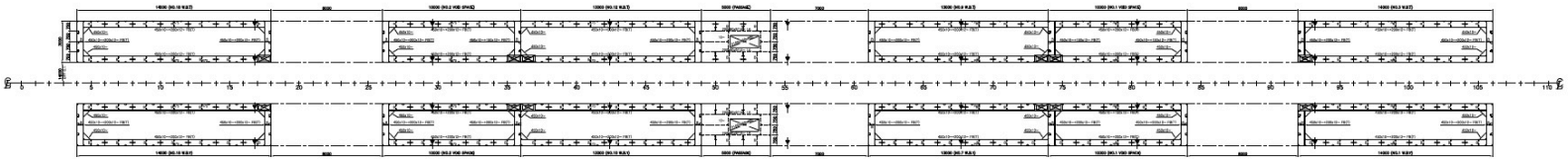


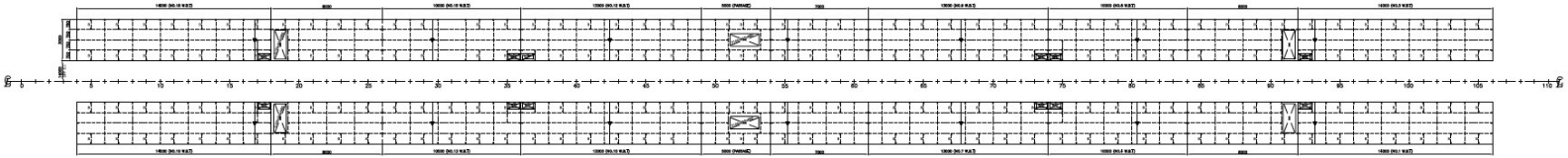
6500 A/B PLAN (P&S)

PROPOSED
SHELL AND STRUCTURE
OF THE
6500 A/B PLAN (P&S)



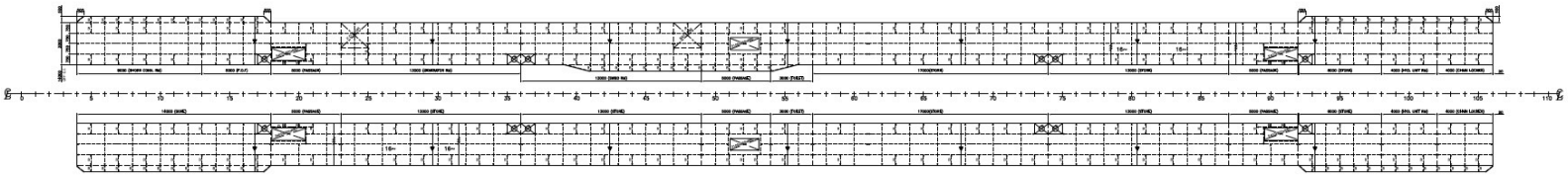
SAFETY DECK PLAN (P&S)

PROPOSED
SHELL AND STRUCTURE
OF THE
SAFETY DECK PLAN (P&S)



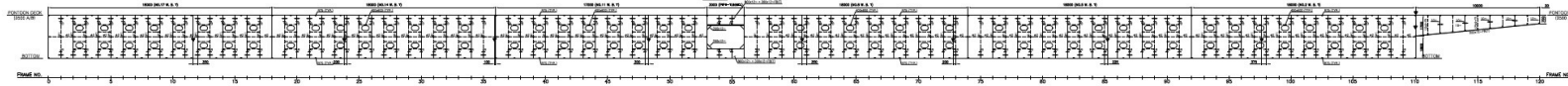
TOP DECK PLAN (P&S)

PROPOSED
SHELL AND STRUCTURE
OF THE
TOP DECK PLAN (P&S)



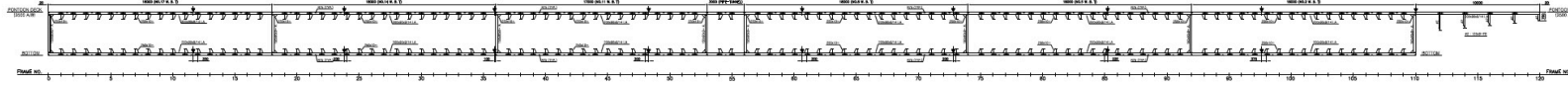
CENTER LINE ELEV.

PROPOSED
SHELL AND STRUCTURE
OF THE
CENTER LINE ELEV.



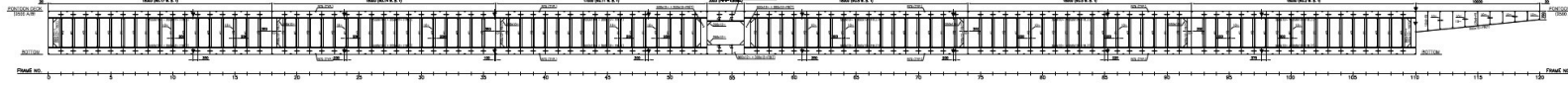
3000 OFF C.L. ELEV.

PROPOSED
SHELL AND STRUCTURE
OF THE
3000 OFF C.L. ELEV.



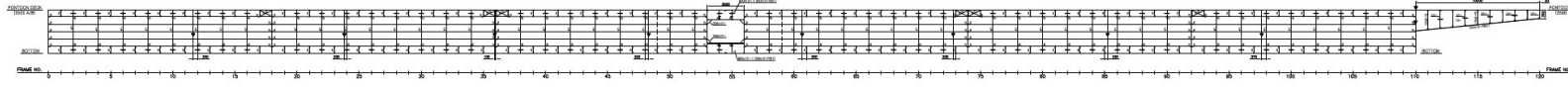
3750 OFF C.L. ELEV.

PROPOSED
SHELL AND STRUCTURE
OF THE
3750 OFF C.L. ELEV.



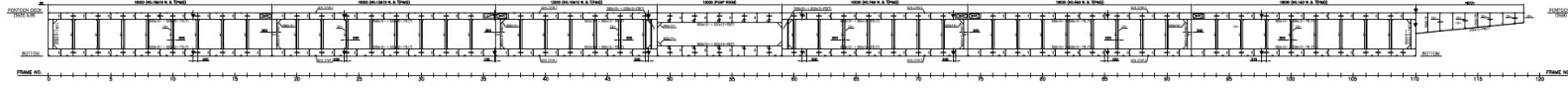
7500 OFF C.L. ELEV.

PROPOSED
SHELL AND STRUCTURE
OF THE
7500 OFF C.L. ELEV.

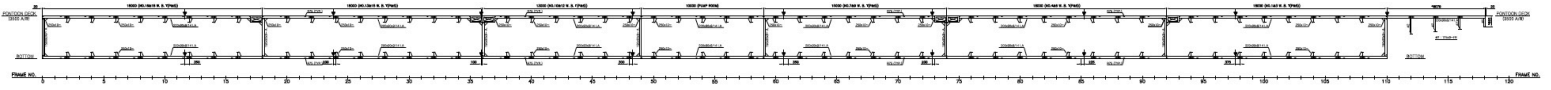


10400 OFF C.L. ELEV.

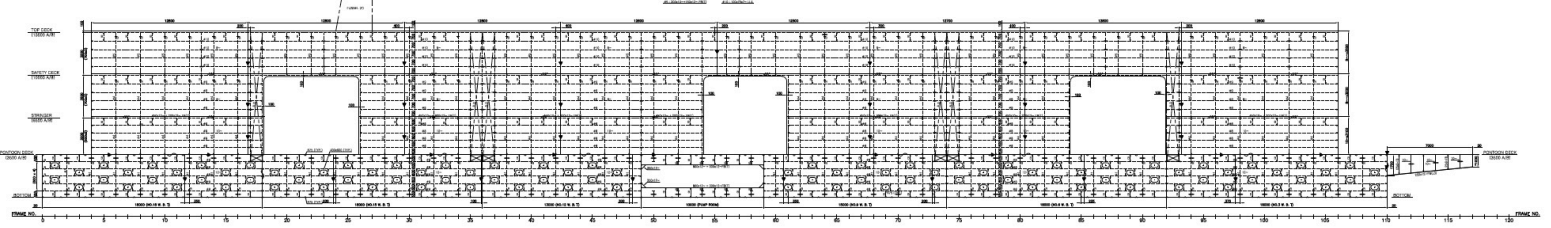
PROPOSED
SHELL AND STRUCTURE
OF THE
10400 OFF C.L. ELEV.



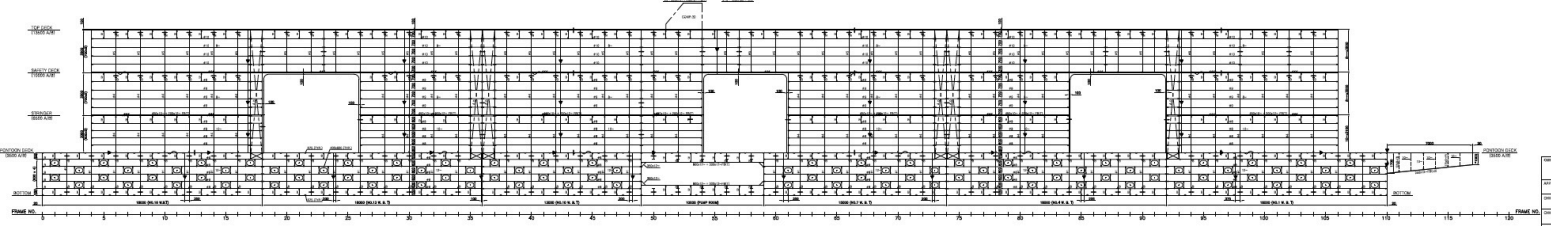
NO.16 DECK LONGI.ELEV.



INN. HULL LONGI BHD (P)



INN. HULL LONGI BHD (S)

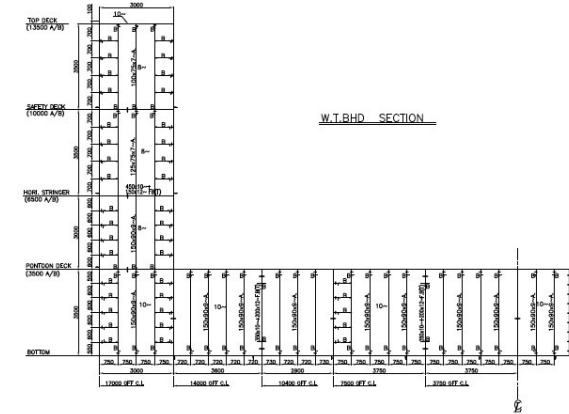


MID-SHIP

DRAWING HISTORY

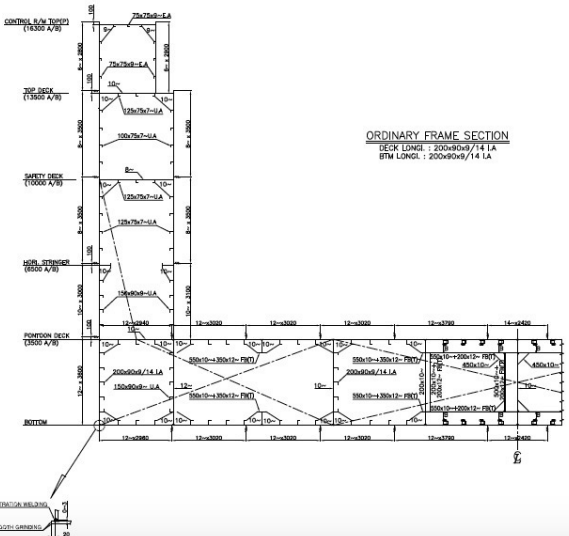
REV. NO.	DATE	DESCRIPTION	REMARKS
0	2010.05.10	ISSUED FOR APPROVAL	

W.T.BHD SECTION



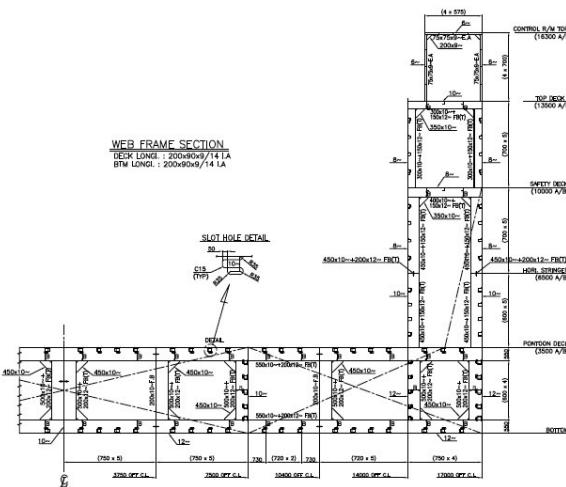
ORDINARY FRAME SECTION

DECK LONGI : 200x90x9/14 1A
BTM LONGI : 200x90x9/14 1A



WEB FRAME SECTION

DECK LONGI : 200x90x9/14 1A
BTM LONGI : 200x90x9/14 1A



EQUIPMENT NUMBER

$$E = A^{0.8} + 2.08h + 0.1A$$

$$= 499.51 + 2 \times 24.00 \times 6.9 + 0.1 \times 411.77$$

$$= 1008.885$$

$$A^{0.8} = 1119.505^{0.8} = 499.51 \quad B = 34.00$$

$$h = 1 + B = 4.0 + 2.9 = 6.9$$

$$A = h \times \sum B_i = 4.0 \times 3.77 = 411.77$$

$$B_i = 4.0 \times 102.00 = 408$$

$$\text{CONTROL ROOM} = 2.9 \times 1.3 = 3.77$$

$$\sum B_i = 3.77$$

EQUIPMENTS

- ANCHOR (STOCKLESS) : 4590KG x 2 sets
- ANCHOR CHAIN (GP) : Ø60 x 275M x 2 sets
- TOW LINE (P.P. ROPE) : Ø85 x 200M
- MOORING ROPE (P.P. ROPE) : Ø55 x 190M x 4EA

PRINCIPAL PARTICULARS

LENGTH	O	A	obt.	120,000 M
LENGTH	B	P.		110,000 M
BREADTH		(OUTSIDE)		34,000 M
BREADTH		(INSIDE WING)		28,000 M
DEPTH OF PONTOON DECK	(MDL)			3,500 M
DEPTH OF TOP DECK	(MDL)			13,500 M
DEPTH OF SAFETY DECK	(MDL)			10,000 M
MAX. SINKING DRAFT				9,500 M
D.L.W.L.				2,900 M
LIFTING CAPACITY				5,000 T

APP. BY	SHIP TYPE	120M CLASS PONTOON
CHK BY	J.S. KIMO	
CHK BY	WLS	
CHK BY		

MIDSHIP SECTION