



Platform Supply Vessel

OVERVIEW - HIGHLIGHTS

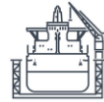


CLASS

DNV, +1A1, DK(+), DYNPOS(AUTR), EO, HL(2.5), SF



BRITISH FLAG



BUILT TO A HIGH STANDARD – KLEVEN VERFT, NORWAY, 2006



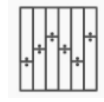
PROVEN DESIGN – VS 470 MKII



DP2 – 2 x BOW THRUSTERS / 2 x STERN THRUSTERS



ACCOMMODATION – 23 BEDS



DECK AREA – 720M² (52.2M X 13.8M)



EXCELLENT TRACK RECORD

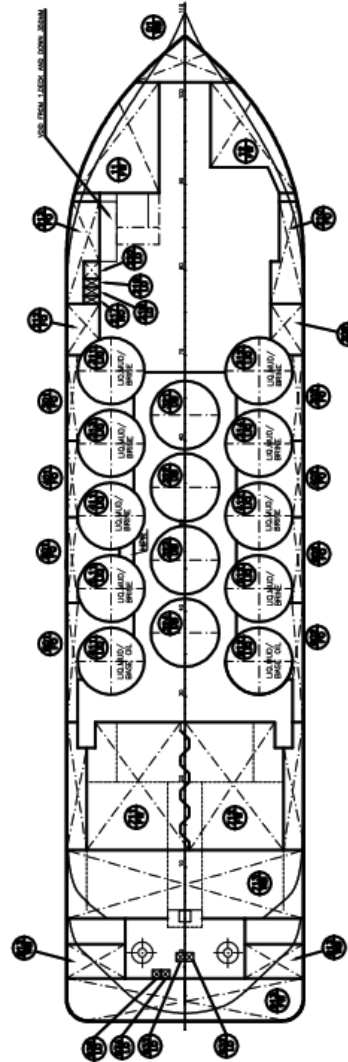
VESSEL SPECIFICATION

Dimensions

LOA	73.4 m
Breadth (Moulded)	16.6 m
Depth (Moulded)	7.6 m
Draft	Max - 6.5 m Min - 3.9 m
GRT	2579 t
NRT	740 t
Deadweight	3728 mt

Machinery

Main Engines	2 x 3020 BHP
Thrusters (Bow)	2 x 790 BHP
Thrusters (Stern)	2 x 790 BHP
Propellers	2 x CP
Capstans	2 x 8 t
Deck Crane	1 x 4 t @ 9 m
Tugger Winch	2 x 10 t



Cargo Capacity

Deck Area	720 m ² (52.2m x 13.8m)
Deck Load	1550 t
Deck Strength	5 t/m ²
Fuel Oil	1094 m ³
Potable Water	979 m ³
Drill Water / Ballast	695 m ³
Oil Based Mud	3371 bbls @ 100% +3371 bbls multipurpose tanks
Base Oil	5384 bbls @ 100% + 1346 bbls multipurpose tanks
Brine	3371 bbls @ 100% + 3371 bbls multi purpose tanks
Dry Bulk	12007 ft ³ @ 100%
Reefer Points	25 x 440v

TRACK RECORD
CLIENTS

