

Self Propelled Deck Barge

General Specs

船舶类型:	自航甲板船	Type:	Self-propelled deck barge
建造年份:	2023 年	Built:	2023
航区:	无限航区	Navigation Area:	Unrestricted
船级:	CCS	Class:	CCS
船长:	139.86M	LOA:	139.86M
型宽:	36.8M	Breadth Moulded:	36.8M
型深:	8.6M	Depth Moulded:	8.6M
设计吃水:	5.8M	Designed Draft:	5.8M
载重量:	16211.3T	Dead Weight:	16211.3T
甲板有效面积:	120Mx36.8M	Total Free Deck Space:	120Mx36.8M
甲板承载能力:	20T/M ²	Deck Load:	20T/M ²
总吨位:	11211	Gross Tonnage:	11211
净吨位:	3363	Net Tonnage:	3363
静水速度:	10 kn	Still Water Speed:	10 kn
调载能力:	4040m ³ /h	Ballast Capacity:	4040m ³ /h

MACHINERY EQUIPMENT

4854KW

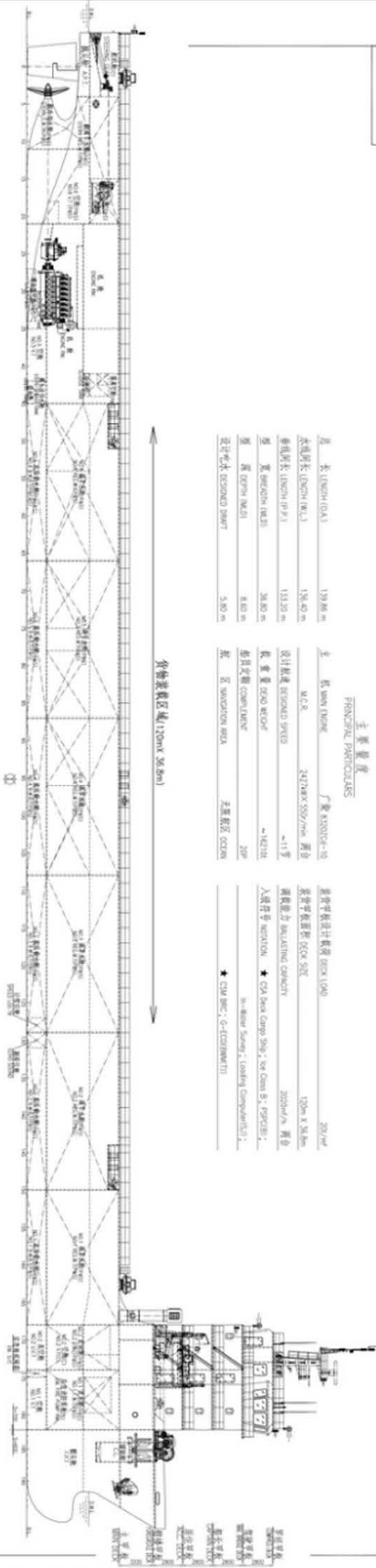
Main Engine Power: 4854KW



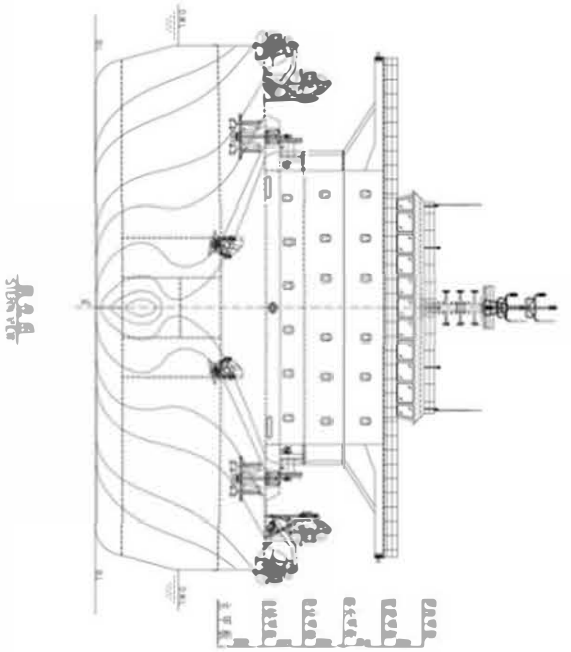
主要数据

总长 (LENGTH OAL)	139.84 m	主 机 型 号 (MAIN ENGINE)	MAN B&W 10	船中横设计数据 (RCC 100)	207 m ²
水线总长 (LENGTH W.L.)	136.42 m	M.P.R.	2470KX550/700 酒店	最低甲板面积 (RCC 502)	120m x 36.8m
垂线间长 (LENGTH P.P.)	133.20 m	设计航速 (DESIGN SPEED)	~11节	满载能力 (LOADING CAPACITY)	2020000 酒店
型 宽 (BREADTH (M.B))	28.80 m	载重量 (GROSS WEIGHT)	~18210t	入港许可 (PORT)	CA Area Comp 296, 1st Class B, 19910101
型 深 (DEPTH (M.B))	8.40 m	船壳定数 (COMPLIANCE)	20P	入港许可 (PORT)	in-shore Sailing, Loading Compliance 1
设计吃水 (DESIGN DRAWT)	5.80 m	系 泊 (MOORING AREA)	无限制区 (OPEN)	船壳定数 (COMPLIANCE)	CCM INC., G-ECONOMY11

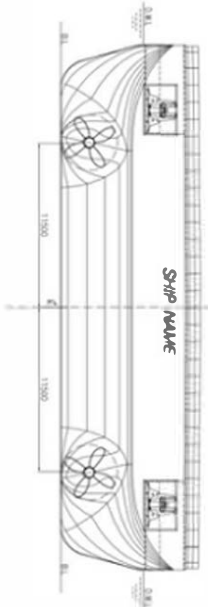
货物装载区域 (120m x 36.8m)



船体图

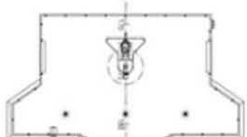


船体图

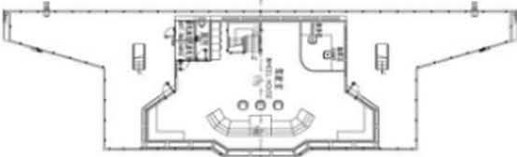


SHIP NAME

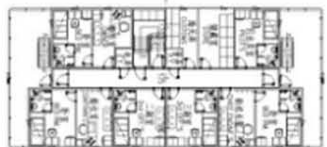
客房甲板
COWARDS DECK



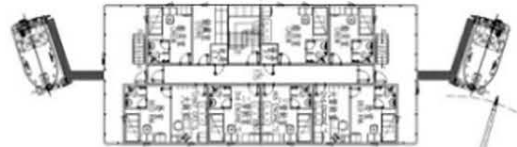
驾驶室甲板
NAV BRIDGE DECK



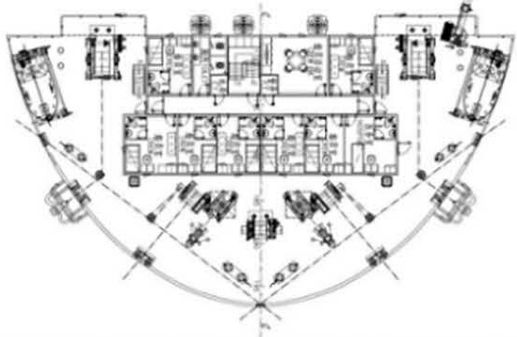
船长甲板
CAPTAIN DECK



客房甲板
DECK



船尾甲板
FORECASTLE DECK



比例尺 1:100