

DP3 4,500MT Lifting Capacity Self-propelled Derrick Crane Vessel



1. 4500T full revolving crane

Crane	Main hoist	Auxiliary hoist	Whip hoist
Load	4,500T at fixed condition at jib aft 3,500T at full revolving condition	800T at fixed or at full revolving	200T at fixed or at full revolving
Working radius	4,500T 28m-40m (fixed) 3,500T 28m-40m (revolving)	800T 34m-102m	200T 42m-116m
Lifting Height Above deck (Lifting speed)	95.2m@R28m 0-4m/min 4500T 0-4m/min 3,500T 0-8m/min No Load	111.6m@R34m 0-12m/min 800T 0-24m/min No Load	125.4m@R42m 0-20m/min 0-40m/min No Load

2. Class of Ship (ABS/CCS)

★CSA Floating Crane, Lifting appliance, Salvage Ship, Pipe Layer, SPS, PSPC (B), Ice Class B, Loading Computer (S,I,D), Helicopter Facilities, In-Water Survey,

★CSM AUT-0, DP-3, Electrical Propulsion System, FTP, BWMP, COMF (NOISE) 3, COMF (VIB) 3, BWMS

3. Principal Particulars

Length	198.8m
Breadth	46.60m

Moulded Depth	14.20m
Summer Draught	9.5m
Operation Draft	11.0m
Complement	399 persons
Jib fixed aft	4,500t X 40m
Rated Speed	Max. 15 KTS

4. DP System

DP3 DGPSX2; MRUX3; HiPAPX2; RadiusX1; Taut WireX2; UPSX 2

5. Machinery of deck

1) Positioning Winch		10 sets	
Brake load		3,000kN	
Wire Diameter		φ76 mm	
Storage Capacity		3,000 m	
Mooring Depth		100 m	
2) Windlass		2 sets	
Weight of anchor		12.6T	
3) Deck crane		40t@35m	
Cargo crane		10T@15m	
4) Free deck Area	4500 m ²	Deck Load	10t / m2

6. Generator

Total Generator Power	41,650KW
Main generator	11KV, 4,750KW 60HZ 8sets
Diesel engine	4,850 KW X 720R.P.M./ 8 sets
Aux. generator	1,500 KW
Aux. diesel engine	1,600 KW
Emergent generator	1000 KW
Emergent Diesel engine	1250 KW

7. Propelling machinery

Total Thrust Power	28,600 KW
Azimuth Propeller	4,000 kW X 2 sets + 4,500 kW X 2 sets
Retractable Propeller	3,300 kW X 2 sets
Tunnel Propeller	2,500 kW X 2

8. Pipe-laying system (Space Reserved)

S- lay up to 2,000m; Tensioner: 600T; A&R winch: 600T; Pipe dimension: 6"--60"

COLLECT FOR PERSONS NUMBER

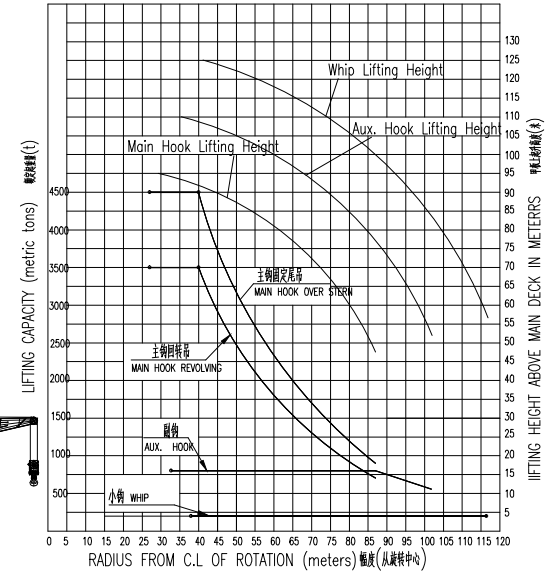
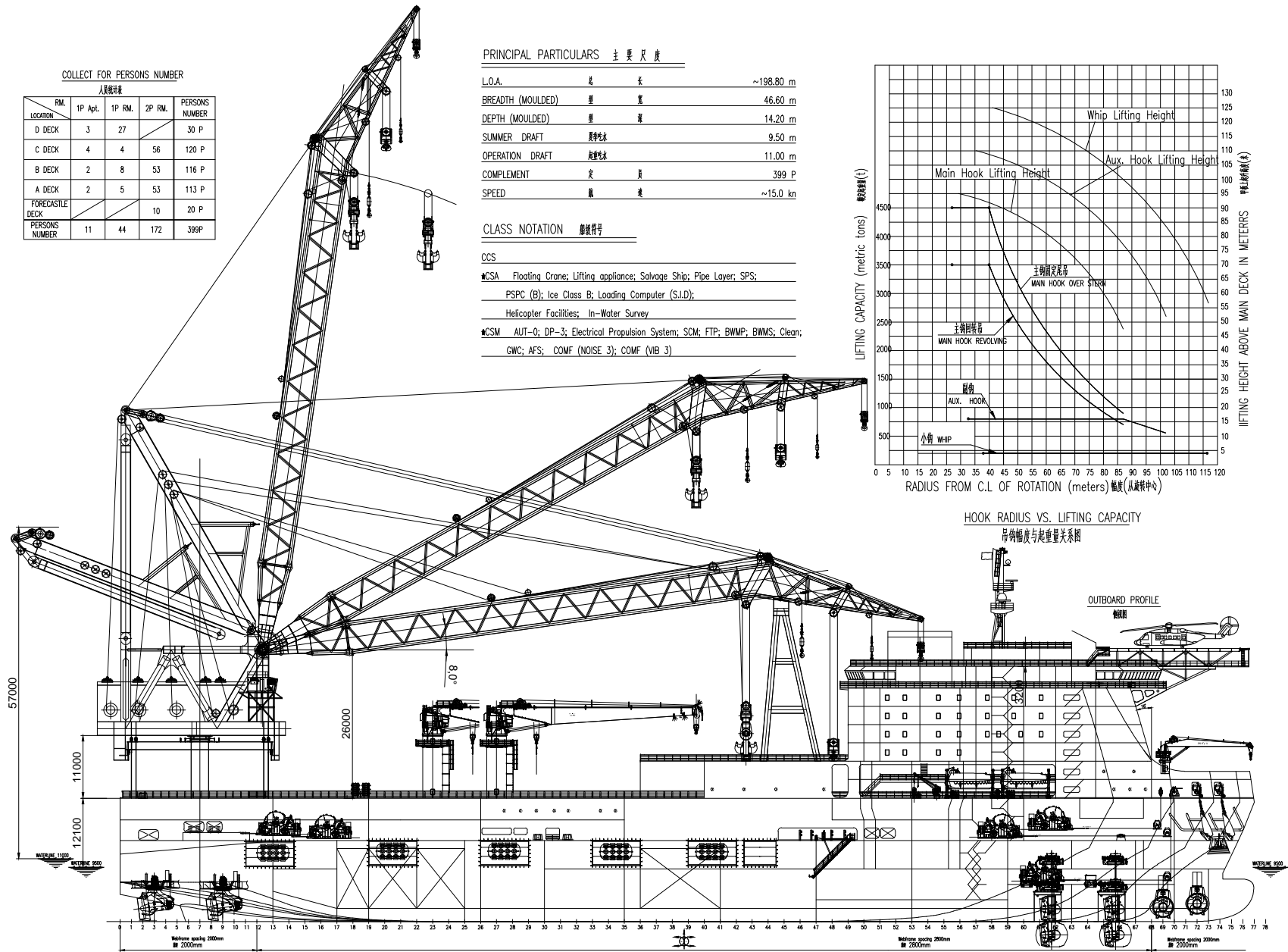
人员统计表				
RM.	1P Apt.	1P RM.	2P RM.	PERSONS NUMBER
D DECK	3	27		30 P
C DECK	4	4	56	120 P
B DECK	2	8	53	116 P
A DECK	2	5	53	113 P
FORECASTLE DECK			10	20 P
PERSONS NUMBER	11	44	172	399P

PRINCIPAL PARTICULARS 主要尺度

L.O.A.	总长	~198.80 m
BREADTH (MOULDED)	型宽	46.60 m
DEPTH (MOULDED)	型深	14.20 m
SUMMER DRAFT	夏季吃水	9.50 m
OPERATION DRAFT	操作吃水	11.00 m
COMPLEMENT	定员	399 P
SPEED	航速	~15.0 kn

CLASS NOTATION 船级符号

CCS
 #CSA Floating Crane; Lifting appliance; Salvage Ship; Pipe Layer; SPS;
 PSPC (B); Ice Class B; Loading Computer (S.I.D);
 Helicopter Facilities; In-Water Survey
 #CSM AUT-0; DP-3; Electrical Propulsion System; SCM; FTP; BWMP; BWMS; Clean;
 GWC; AFS; COMF (NOISE 3); COMF (VIB 3)



HOOK RADIUS VS. LIFTING CAPACITY

吊钩幅度与起重重量关系图

- HELICOPTER DECK 41800 889#
- TOP DECK 44100 81#
- NAVIGATION BRIDGE DECK 4000 899#
- D-DECK 3700 01#
- C-DECK 3400 01#
- B-DECK 3100 01#
- A-DECK 2810 01#
- FORECASTLE DECK 2490 899#
- UPPER DECK 2140 81#
- MIDDLE DECK 1780 899#
- MAIN DECK 1420 81#
- RAISED TANK TOP 920 9200 #88#
- TOP TANK 520 2500 #8
- BULKHEAD