

# DPII / 4P MOORING - IRM ROV & DIVE SUPPORT



## **PRINCIPAL PARTICULARS**

Built / Class: 2008 / ABS  
Port / Flag TBD  
LOA / Breadth: 60.00m / 15.60m  
Deck Area: 377 m<sup>2</sup>  
GRT/NRT: 1973 / 592  
Main Eng.: 2 x 1400 kW (2 x 1877 BHP)  
Propulsion: CP Azimuth Thrusters  
Main. Gen.: 4 x 320 kW / 440 V  
Shaft Gen.: 2 x 625 kW / 440 V  
Berths: Total 60 persons  
Crane: 24T AHC 2,300m  
Deck Winch: 1 x 15T Tugger / 2 x 10T Capstan  
4P Mooring: Electro Hydraulic / 1000m wire  
Anchors: 4 x 3 ton Delta Flipper  
WROV: Perry Slingsby Triton XLR / TMS  
Light WROV: SeaEye Cougar / TMS

**DPII & 4 POINT MOORING  
TRITON XLR 150HP WROV  
SEAEYE COUGAR LIGHT WROV  
DUAL-LARS DIVE SYSTEM  
QUINCYs POSITIONING SYSTEM  
24T AHC 2300m SUBSEA CRANE  
PRECISION LIFTING TO 2,100M  
IRM & SURVEY OPERATIONS**

# Technical Specifications

## General Description

Type	Multi Purpose Dive & ROV Support
Classification	ABS DP II SUPPORT VESSEL
Port / Flag	TBD
IMO	TBD
Year Built	2008

## Principal Dimensions

Length Overall	60.00m
LBP	58.70m
Breadth Moulded	15.60m
Depth Moulded	6.00m
Draft, min / max	3.50m / 5.0m
GRT / NRT	1973T / 592T
DWT	1200T
Speed & approx. consumption	Max 10kn. @ 13.5m <sup>3</sup> / day Economical 8.5kn. @ 11m <sup>3</sup> / day DP Operations @ 7~9m <sup>3</sup> / day

## 4 Point Mooring System

Electro Hydraulics	Fwd. 2 x 30t - Aft 2 x 24t
Wire Rope	36mm dia. @ 1000m length
Anchors	4 x 3000kg Delta Flipper

## Power & Propulsion

Main Engines	2 x 1,400 kW (2 x 1877 BHP)
Propulsion	2 x CP Azimuth Thrusters
Bow Thruster	2 x 400 kW CP Tunnel
Main Generators	4 x 320 kW / 440V
Shaft Generators	2 x 625 kW / 440 V
Emergency Gen.	1 x 60 kW / 440 V

## Main Deck

Main Deck Area	377 m <sup>2</sup> @ 5 t/m <sup>2</sup>
Mezzanine Decks	144 m <sup>2</sup> @ 5t/m <sup>2</sup>

## Capacities

Fuel Oil	643 m <sup>3</sup>
Fresh Water	434 m <sup>3</sup>

## Accommodation

Bridge Deck	6 x 1 Bunk Cabin (all en-suite) 2 x 2 Bunk Cabins (all en-suite)
Forecastle Deck	3 x 2 Bunk Cabins (all en-suite) 8 x 4 Bunk Cabins (all en-suite)
Tween Deck	2 x 2 Bunk Cabins 2 x 4 Bunk Cabins
	Total 60 Bunks

## Deck Equipment

Main Crane (man riding)	SMST Knuckle Boom AHC 2,300m DAF 1.3: 24t@10m (DF) / 6t@19m DAF 1.6: 20t@6m (DF) / 6t@19m
Tugger Winch	1 x Hydraulic @ 15t
Capstans	2 x Hydraulic @ 10t
Deck Air Supply	7 BAR
Deck Power Sup.	2 x 350 kW / 440V

## Modular Dive System

Code	IMCA D023 Certified
DDC	60" Twin Lock
Control Panel	3-Diver Hard Plumbed
HP Compressors	1 x 250 ltr./min. @ 200 BAR
LP Compressors	2 x 1800 ltr. / min @ 16 BAR
Launch & Recov.	Dual LARS

## ROV Systems

WROV	1 x Perry Triton XLR - 125HP - 3000m Top Hat Perry 4A TMS w. 380m Tether 10t SWL Deepwater Lawson LARS 1 x 7F Schilling T4 Manipulator 1 x 5F Whittaker Grabber
Light WROV	1 x SeaEye Cougar - 2000m Lars / TMS 3. 200m Tether 2 x 5F/6F Manipulators

*(data sheets available on request)*

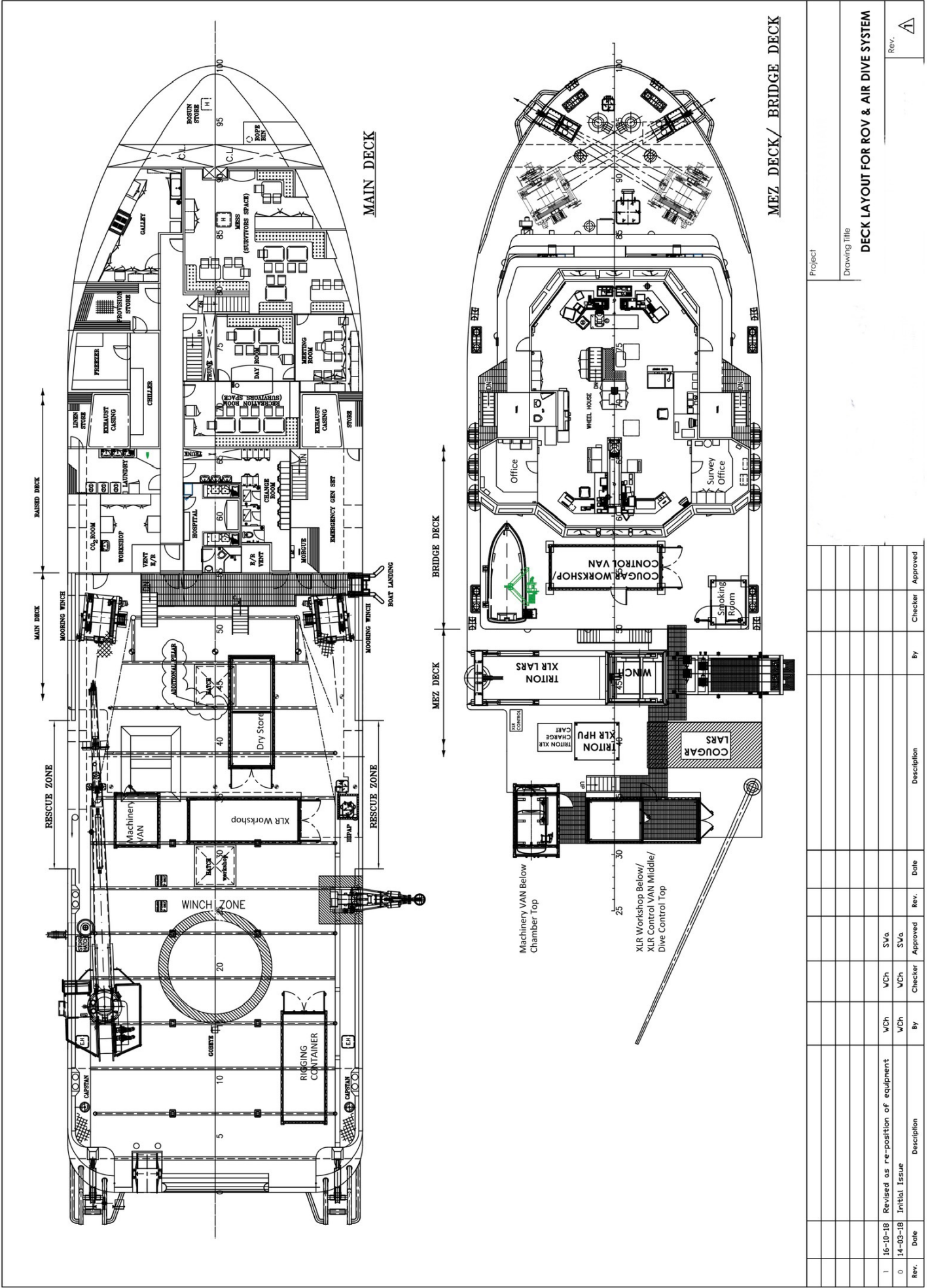
## DP / Surface / Subsea Positioning

Type	DP II
Brand	Converteam ADP21 Duplex
Reference 1	DGPS 1 Fugro Seastar 9205
Reference 2	DGPS 2 Fugro Seastar 9205
Reference 3	Cyscan Mk. 4 Laser System
Reference 4	Sonardyne Ranger 2 USBL
Reference 5	Taut Wire, Bandak 15B
Surface Positioning	Veripos LD5
Subsea Beacons	Sonardyne 6G
Positioning Software	QINCY & EIVA

## Communication

Network Innovations	Intellian V80G Ku-Band VSAT & Iridium Pilot
Video Network	Fiber Optic

# DECK LAYOUT



Rev.	Date	Description	By	Checker	Approved	Date	Rev.	Date	Description	By	Checker	Approved
1	16-10-18	Revised as re-position of equipment	WCh	WCh	S'Va							
0	14-03-18	Initial Issue	WCh	WCh	S'Va							

Project: \_\_\_\_\_

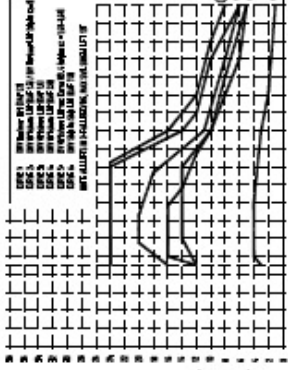
Drawing Title: **DECK LAYOUT FOR ROV & AIR DIVE SYSTEM**

Rev. A

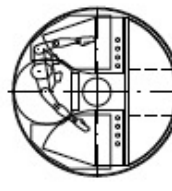
# CRANE CHART

**LOADCHART FOR SWL (Load on Hook)**

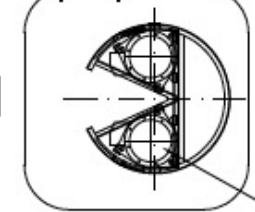
**NOTE:** Consult the crane's operation manual for additional information.



**SECTION A-A**  
SCHEMATIC



**SECTION B-B**  
SCHEMATIC

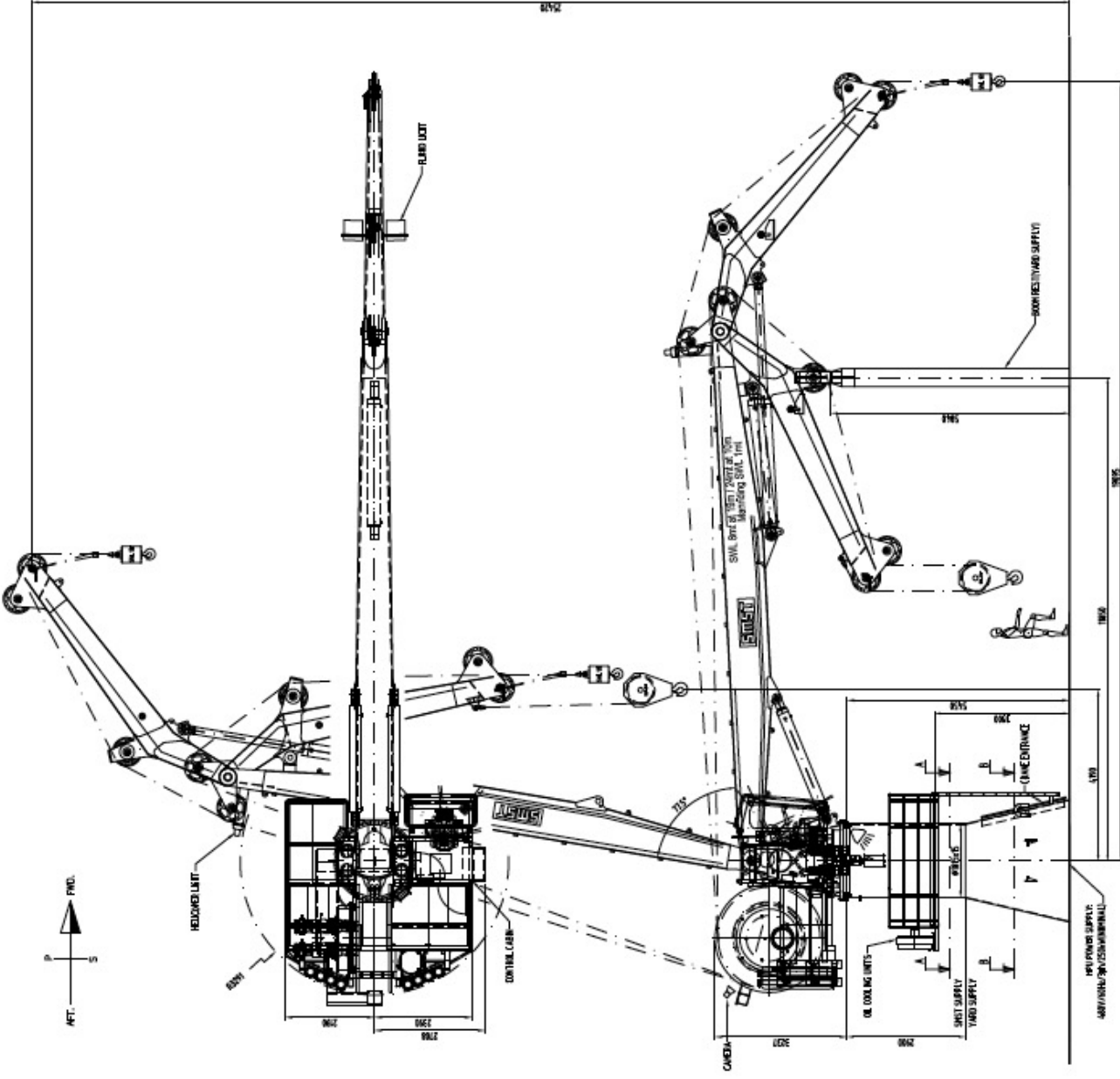


- Crane model: SWL 100 (100% of SWL)
- Capacity: 100% of SWL
- SWL 100 (100% of SWL)
- SWL 90 (90% of SWL)
- SWL 80 (80% of SWL)
- SWL 70 (70% of SWL)
- SWL 60 (60% of SWL)
- SWL 50 (50% of SWL)
- SWL 40 (40% of SWL)
- SWL 30 (30% of SWL)
- SWL 20 (20% of SWL)
- SWL 10 (10% of SWL)

Item	Value	Unit
Capacity	25-06-2008	
Model	SWL 100	
Year		
SWL		
SWL (kg)		
SWL (t)		
SWL (kN)		

<b>KNUCKLE BOOM CRANE (21) WITH AHC</b>	
<b>KNUCKLE BOOM CRANE (24) WITH AHC</b>	



FOR POWER SUPPLY:  
AIR/WATER SUPPLY

Hydraulic Trucking 25-06-2008, SWL 100 (100% of SWL) - Capacity and SWL for SWL 100 (100% of SWL)

