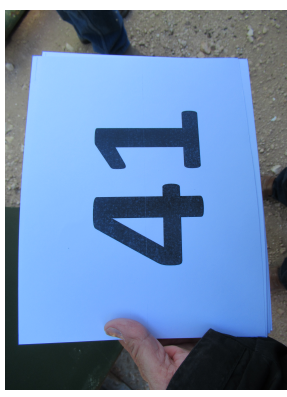


## RIG 41: Skytop Brewster N-46 800HP Mechanical

### Inventory:

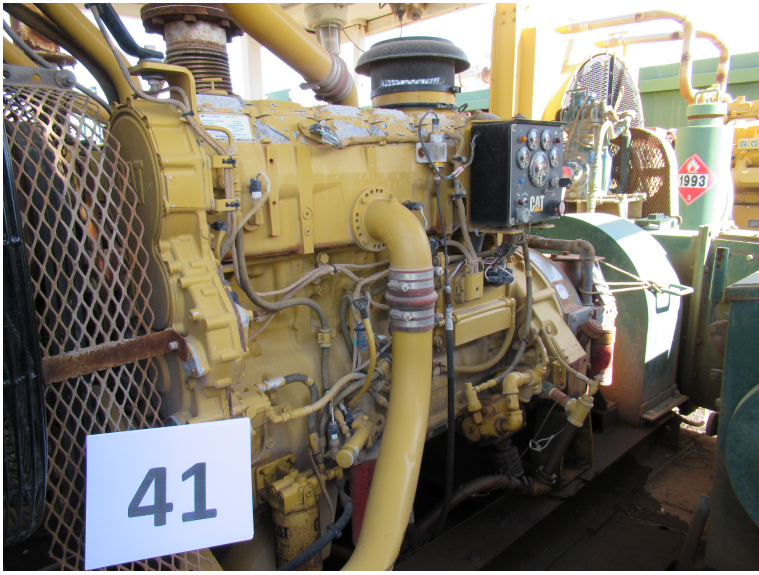
- **Drawworks:**
- Skytop Brewster N-46
- **Power:**
- (2) Caterpillar C 15 625 HP each
- National C-245 Torque Converters
- **Mast and Substructure:**
- Butler Parks, 131'H x 18'6"W
- 450,000 pound SHL
- 15'H x 28'W x 47'L Box on Box
- **Pump #1:**
- Maxum 1,300 HP Triplex pump
- Caterpillar D3512 Power
- **Pump #2:**
- F1000 HP Triplex Pump
- Caterpillar D398 Power
- **Rotating and Traveling Equipment:**
- Rotary Table: Brewster RSH 18"
- Swivel: 300 Ton Garner Denver
- Blocks: 250 Ton McKissik with Web-Wilson Hydra Hook
- **BOP Equipment:**
- Hydril 11" 5,000 PSI Annular BOP
- Cameron SS 11" 5,000 PSI Double Ram BOP
- Shaffer, 4-station, 100-gallon Accumulator with Remote Panel
- 5,000 PSI Choke Manifold
- **Generators:**
- (2) Caterpillar 3406E 320 KW Generators
- Both in Utility House with Air Compressor
- **Mud System:**
- (2) Pit Mud System, 650 Barrel Capacity
- (1) Brandt Shale Shaker
- Desander and Desilter
- **Fuel Tank:**
- 8,000 gallon with built in lubester
- **Drill Pipe and Drill Collars:**
- 12,000' of 4 ½" drill pipe (16.60lb)
- (21) each 6" and (6) each 8" drill collars
- **Additional Equipment:**
- (2) Hydraulic floor winches
- Kelly Spinner
- (2) 500 barrel water tanks














A photograph of an industrial site, possibly an oil or gas wellhead, under a clear blue sky. In the foreground, a white rectangular sign is held up, displaying the number '41' in large, bold, black digits. The background features several pieces of green industrial machinery, including a large green unit with a prominent roller and a smaller green unit with several red gas cylinders. A tall, yellow metal derrick or tower is visible in the distance. The ground is dry, sandy, and covered with sparse, brownish vegetation.

41