



T/B-S/V-OIL REC

built as a standard PSV and she was lengthen/ converted to also act as a MRV vessel with Fire Fighting, Oil Recovery (+ 1000 m3) and Stand-by/ Rescue/ ERRV in 1985.

With azimuth thruster, Hi Lift rudder system and C/P/ bow Thruster, she has very good station keeping capacities, all handled over a modern Joy Stick system.

modern Offshore Support Vessel special design to give our client a very efficient vessel for their operations. The vessel has also been used for Sub Sea operations like VSP and Seabed Seismic.

Description :

<i>Class</i>	<i>:</i>	<i>DnV + 1A1, Supply, SF, Oil Rec. FiFi 1</i>
<i>Call Sign.</i>	<i>:</i>	<i>TBD</i>
<i>Flag</i>	<i>:</i>	<i>GREEK</i>
<i>Rebuild</i>	<i>:</i>	<i>1985</i>
<i>Dnv ID</i>	<i>:</i>	<i>TBD</i>

Main :

<i>Gr ton 1969 conv</i>	<i>:</i>	<i>1274</i>
<i>Ne.t.</i>	<i>:</i>	<i>382</i>
<i>Loa</i>	<i>:</i>	<i>61.5 m</i>
<i>Length w.l.</i>	<i>:</i>	<i>56,2 m</i>
<i>Depth Molded</i>	<i>:</i>	<i>5,5 m</i>
<i>Breadth</i>	<i>:</i>	<i>11,5 m</i>
<i>Draft Extreme</i>	<i>:</i>	<i>3.5 m</i>
<i>Speed</i>	<i>:</i>	<i>Max 12.7 knots</i>
<i>Freeboard</i>	<i>:</i>	<i>2,0 m (st by draft)</i>
<i>DW summer</i>	<i>:</i>	<i>1023 t</i>



T/B-S/V-OIL REC

Performance/ Consumption :

Max speed-Consump.	:	12,5 knots	9,1 t/ day.
Srevice sp.-Consump.	:	10,0 knots	7,8 t/ day.
Econ.speed/consump.	:	9,0 knots	6,1 t/ day.
Stand by in field.	Beufort 0-3	:	1,0 t/ day
	Beufort 3-5	:	2,1 t/ day
	Beufort 5-7	:	4,2 t/ day

Propulsion :

Main engine	:	2 x Industrie 6 D7 HDN, 1 000 HP each 2 x Hjelset RKT 52/220, variable pitch propllers
Azimuth engine	:	1 x 1700 HP, MWM Diesel, TBD603V16
Retractable Azimuth	:	1 x 1385 HP, Aquamaster UL801/4600.
Bow thruster	:	1 x Caterpillar D343 TA, 426 HP
Steering gear	:	2 x Servi PG 40/70 Tillerbore 120
High Lift Rudder system	:	2 x Schilling rudders
Bollard pull	:	Approx 45 ts
Joy Stick	:	Robertson Multipurpose Pilot system (RMP)
Compressor	:	1 x Sperre HV1-120, 120 35m ³ /h, 30bar. 1 x Sperre HL 2/90, 38m ³ /h, 30bar.
Generators	:	1 x Volvo Penta TAD 121 CHC, /252KW. 2 x Caterpillar D343T, 275 HP/170KW each



Cargo :

Dry mud	:	80 cum at density 2.0
Discharge rate	:	2x15m ³ /h 3,5bar friair flow.
Drill water	:	490 cum
Discharge rate	:	80 m ³ /h at 61 m head
Fuel	:	388 cum
Discharge rate	:	77 m ³ /h at 61 m head
Brine	:	475 m ³ at density 1.6
Discharge rate	:	2 x 75 m ³ /h at 12-18 Bar.
Liquid mud	:	475 m ³ at density 2.0.
Discharge rate	:	2 x 75 m ³ /h at 12-18 Bar
Oil Rec.	:	997,50m ³ nofo- standards
Discharge rate	:	2 x 250 m ³ /h at 3-5 Bar, Visk.mm ² /s:1500

T/B-S/V-OIL REC

Fresh water	:	199	cum
Discharge rate	:	80	m ³ /h at 61 m head.
Deck cargo	:	300	tonnes
Deck space	:	200	m ² (Fri deck area 18 x 8,4 + 4,7 x 4,7 M)
Deck load	:	5	t/m ² forw.
		10	t/m ² aft.

Deck Equipment :

Deck machinery	:	1 x tugger winch, 5 TS 2 x capstans, 5 TS 1x capstan, Danfoss RR 750 D
Windlass	:	Hydraulic windlass abt 350 m. K3 chain, 2 x 350 m, with Pool anchors, 1260kgs
Towing Hook	:	35tns B/P
Oil Booms	:	2 x hydraulic reels c/w ocean booms
Oil Booms	:	Port booms curtain type
Pumping	:	2 x autonomous hydraulic pumping systems 2 x autonomous compressed air pumping systems
Oil Recovery	:	2 x portable skimmers for medium/high viscosity oils
Dispersant	:	5tns c/w spraying arms
Shoreline	:	workboat c/w high pressure steam machine, hand tools and sorbent materials
STS	:	Fenders, hoses, portable inert gas generator and steam generator can be fitted

Stand-by/ rescue Equipment :

FRC no I	:	1 x Wedo700	MCA/ NMD approved
FRC no II	:	AVON SR 6.4 – 15mam each	(petrol)
Davits	:	1 x Vestdavit P3600, w/ Chock Absorber. 1 x Vestdavit C 4200.	
Life Rafts	:	1 x 10 pers 3 x 12 pers	
Rescue & drop zones	:	2 x Mid Ships Protected from Cargo deck/ Cargoes	
Rescue gun	:	1 x Harpoon Grapnel gun	
Rescue basket	:	1 x Bennex basket	
Rescue Scoop	:	1 x UFAS rescue scoop	
Survi. Capacity	:	244 – can be extended to 300	
Deck crane	:	Hydralift 24 t/m MCVT 1085-2-12(8)RB800,(2 t at 12 m)	

Fire Fighting Class I :

Class	:	FiFI 1
Deluge	:	Entire vessel 250 m ³ / hrs
Capacity	:	2400 m ³ /hr. from 2 monitors.

T/B-S/V-OIL REC



Accommodation :

Forcastle deck	:	Day room
Boatdeck	:	2 x 1 man cabins 3 x 2 man cabins
Main deck	:	7 x 2 man cabins 1 x 6 man cabins
Air cond.	:	1 x Galley, 1 x mess room ,1 x laundry, 1 x hospital, York F 62 S

Communication GMDSS A2 :

HF/MF	:	Furuno FS 5000
HF/MF Watchreceiver	:	Furuno DSC 6 A
VHF Watchreceiver	:	Furuno FM 8500 DSC
Watchreceiver 2182	:	Sailor R 501
VHF fixed	:	Furuno FM 8500 Sailor RT 146 3 remote units Sailor RT 2048
Navtex	:	Furuno NX 500
VHF	:	1 x VHF H 33YBN 1 x VHF H 34 YBN 2 x RS 8000 N /BTE (MOB & Lifeboat) 2 x Tron VHF (Gmdss) 1 x Navico VHF (Gmdss) 1 x FSG 4 Helikopter frequencis
UHF portable	:	4 x FM 4506 M

Navigation :

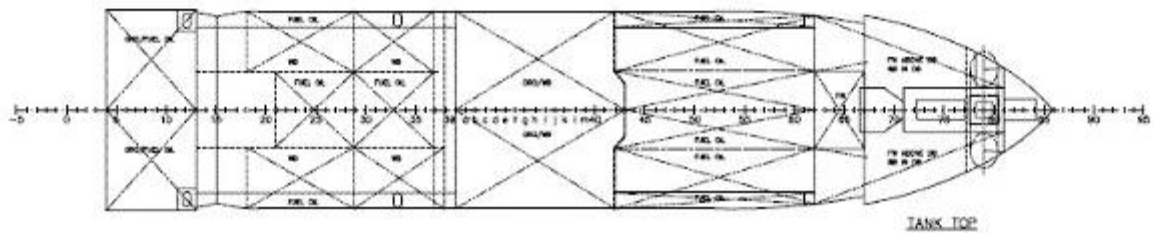
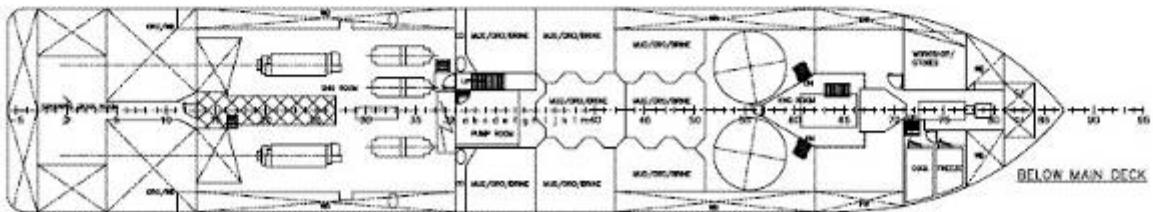
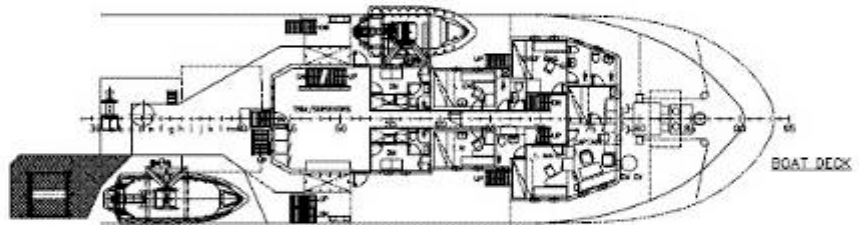
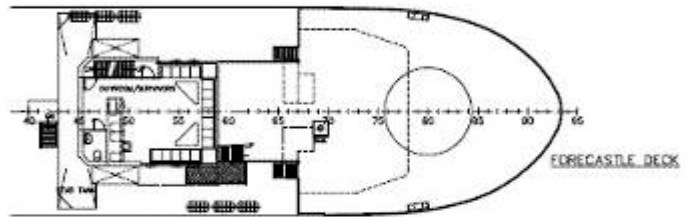
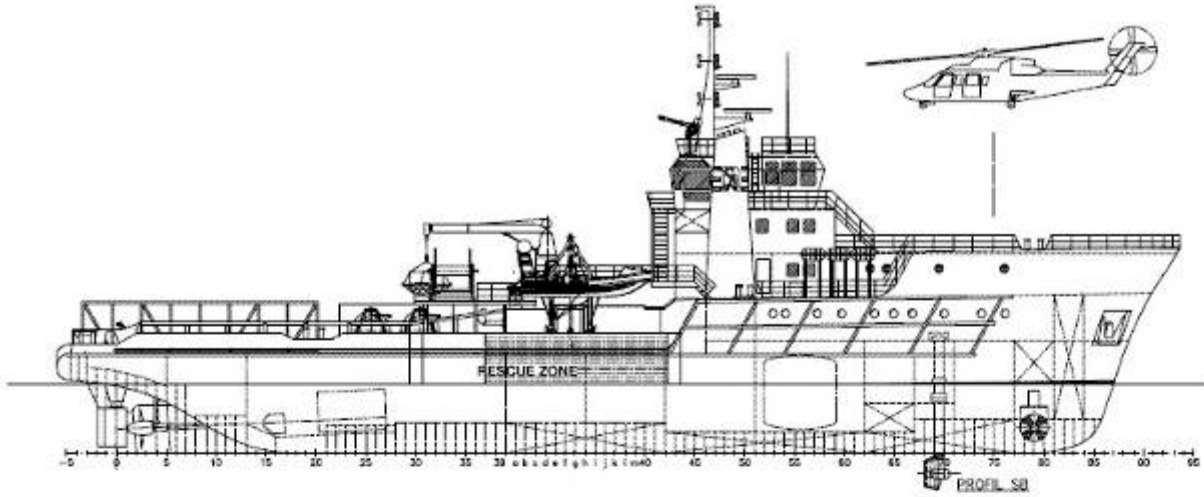
Helicopter beacon	:	1 x Skanti Normark III
Autopilot	:	1 x Robertson AP 9
Radars	:	1 x FR 2830 S
ARPA Radar	:	1 x FR 2110 x
Surface Surveillance	:	Furuno Telchart 2023 ECDIS

T/B-S/V-OIL REC

El Chart : *C-map Zone 1*
Pers. Computer : *3 x Compaq/ Fujitsu (network)*
GPS : *2 x Furuno GP 50 & GP 35*
Intercom System : *Vingtor VMP,24 lines*
Gyro : *1 x Sperry*



T/B-S/V-OIL REC





T/B-S/V-OIL REC

