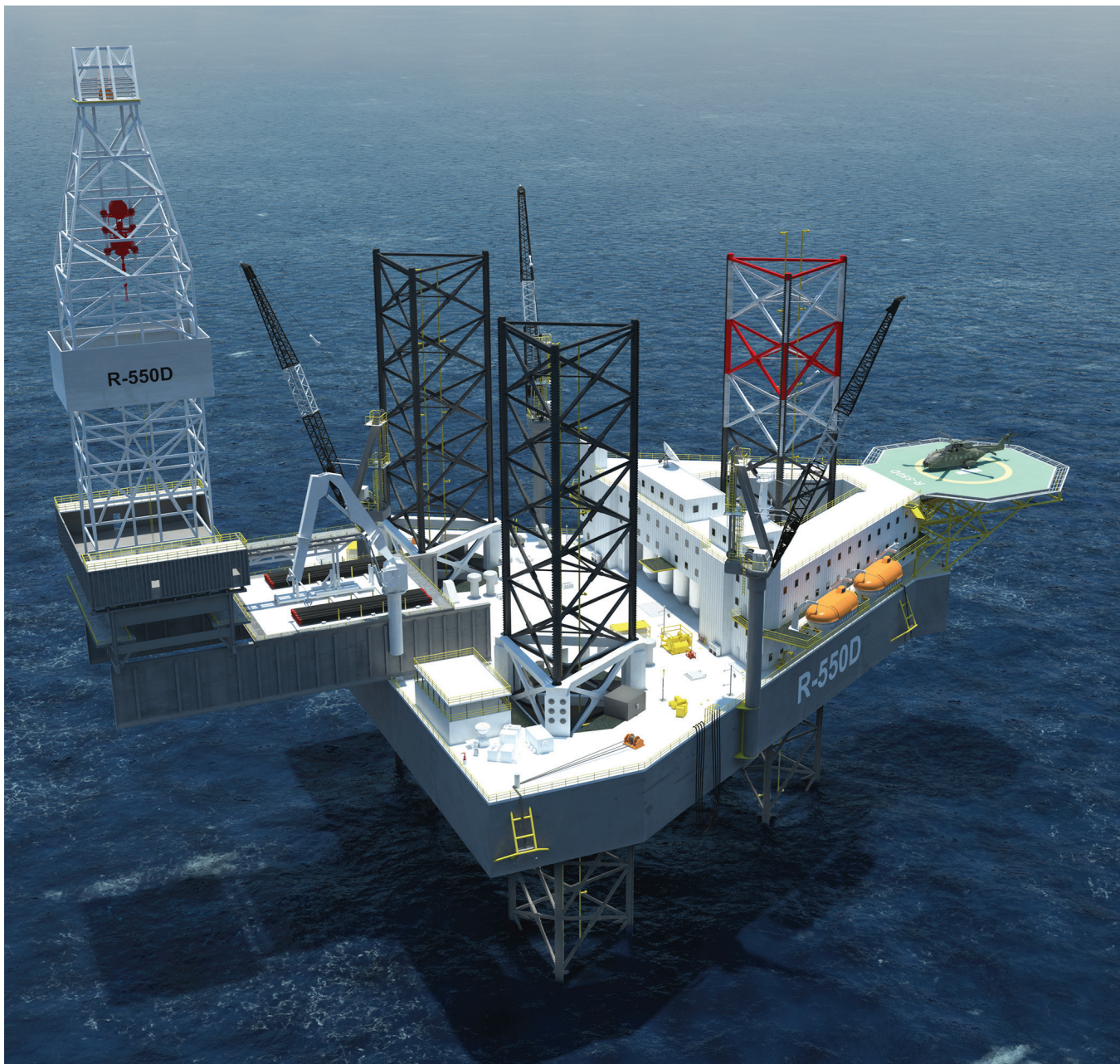

R-550D

Jack-up Drilling Rig

400 Ft. Water Depth (121.9m)
ABS Class Approved



R-550D

R-550D Jackup Drilling Rig

- High-capacity and extended-reach cantilever rig, rated for 3,500 Kips combined drilling load (1,587mt) with extended reach to 80 Ft. aft of transom (24.4m).
- Operational Variable Deck Load 11,000 Kips (4,989mt).
- 4,220 barrel active/reserve mud pits (671m³) configured for dual fluid operations.
- Three mud pumps, each 2,220 HP TSC or equivalent (1,641 KW).
- Drill floor/cantilever, configured to off-line stand building with Iron Roughnecks.
- Living Quarters for 150-plus, with up to 11 office/conference/training rooms; configured to suit client needs.
- Utilities and drains configured for Zero Discharge.
- Base design for closed loop or air cooling of all equipment.
- High-speed preload system for minimized mobilization time.
- Superior jacking capacity with 54 pinions allows jacking with full preload (70,000 Kips / 31,746 mt), in addition to normal jacking of 54,000 Kips (24,490 mt).
- Footprint compatible with MLT-116; KFELS Mod V-B; JU-2000A.
- Drilling depth 30,000 Ft.+ (9,144m+).

HULL		
Hull Length	260 Ft.	79.2m
Hull Breadth	261 Ft.	79.6m
Hull Depth	27 Ft.	8.2m
Transit Draft	18 Ft.	5.48m
Transverse Leg Centers	142 Ft.	43.3m
Longitudinal Leg Centers	129 Ft.	39.3m

LEGS		
Triangular, open truss X-braced Legs		
3 Leg Configuration, Length	558.5 Ft.	170.2m
Spud Can Equivalent Diameter	54 Ft.	16.5m
Spud Can Maximum Bottom Bearing Pressure	8.39 Kips/Sq. Ft.	41.0mt/m ²

STORM SURVIVAL CRITERIA		
Water Depth	400 Ft.	121.9m
Air Gap	50 Ft.	15.24m
Wave Height	60 Ft.	18.3m
Period	15 Sec.	-
Surface Current	1.5 Knots	0.77 m/sec
Wind Velocity (1 Min.)	100 Knots	51 m/sec
Leg Penetration	25 Ft.	7.62m

JACKING AND FIXATION SYSTEMS	
Jacking:	TSC SJ1000 or equivalent
Fixation:	Zenlock™ System (Patented)

R-550D

STORAGE CAPACITIES		
Fuel Oil	4,033 bbls	641m ³
Potable Water	2,645 bbls	420m ³
Drill Water	23,078 bbls	3,669m ³
Preload	82,290 bbls	13,411m ³
Active Mud Tanks	4,220 bbls	671m ³
Mud Treatment Tanks	200 bbls	32m ³
Brine	1,222 bbls	194m ³
Base Oil	1,440 bbls	222m ³
Bulk Barite/Cement	13,500 Cu. Ft.	382m ³
Sack Storage	5,000 Sacks	
Main Deck Pipe Rack	500 Kips	227mt
Cantilever Pipe Rack	1,200 Kips	544mt

ACCOMMODATIONS	
Capacity to 150-Plus Persons	
Single, Double staterooms and up to 11 Office/Conference/Training Rooms to suit Client needs	

CLASSIFICATION, REGULATIONS	
<ul style="list-style-type: none"> As requested by Client: ABS MODU Code 2012 "Rules for Building and Classing Offshore Mobile Drilling Units," American Bureau of Shipping, 2012 Edition IMO, Modu Code 2009 Consolidated Edition International Convention of Loadlines, 1966 International Convention of Tonnage Measurements, 1969 MARPOL, 2011 Consolidated Edition ILO 92 & ILO133; International Labour Conference concerning Crew Accommodations on board Ship CAP 437 ABS CDS 2012 	

DRILLING EQUIPMENT		
Derrick	40 Ft. by 45 Ft. by 160 Ft.	12.2m by 13.7m by 48.8m
Hookload	1,500 Kips	680mt
AC Top Drive, TDS-8 or Equiv.	≤2,000 Kips	907mt
AC Drawworks	4,600 HP	3,430 KW
Mud Pumps	3 each 2,200 HP	1,641 KW
Mud Standpipes	7,500 psi	517 bar
Rotary Table	49.5 in.	1.26m
Diverter KFDJ Fixed (bore)	36.5 in.	0.927m
Choke & Kill	15,000 psi	1,034 bar
Knuckleboom Cantilever Crane	>2ST at 68 Ft.	>1.9mt at 21m

MUD TREATMENT	
Dual Fluid Active system	
2,400/1,500 GPM Solids Control System (9,085 / 5,678 lpm)	
Shaker House Located at Starboard Stern	
Permanent Flow Line	
Space and Utilities for Centrifuges	
Space and Utilities for Cuttings Equipment	
Bulk Tank Dust Collection System	
Bulk Transfer/Mud Mixing Control System	

POWER PLANT			
Main Power	5 each CatC175	2,586 bHP	1,929 KW each
Emergency Power	1 each Cat3512C	1,478 bHP	1,103 KW

CANTILEVER		
Longitudinal	80 Ft. Clear Aft	24.4m
Transverse	±20 Ft. Port / Starboard	± 6.1m
Combined Load Capacity	3,500 Kips	1,587mt
All Cantilever Utilities Routed in Permanent Drag Chains		

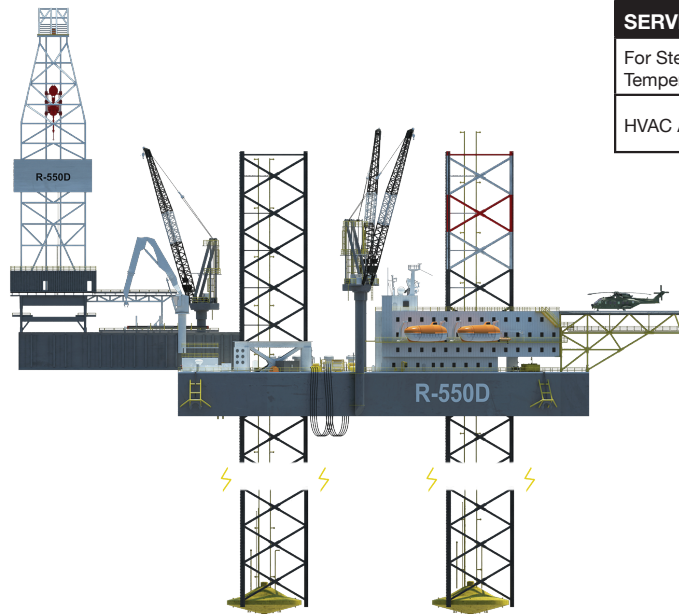
HELIDECK		
Helicopter	S61N, S92 or MI-8	
Dimensions	72.8 Ft. Octagon	22.2m
Deck type	Aluminum	

DECK CRANES		
3 Pedestal Cranes		
Port, Starboard & Aft Cranes	120 Ft. Boom Length	36.6m
Aft Crane Rating	110 Kips at 50 Ft. Radius	50mt at 15.2m
Port & Starboard Cranes Rating	154 Kips at 50 Ft. Radius.	70mt at 15.2m Radius

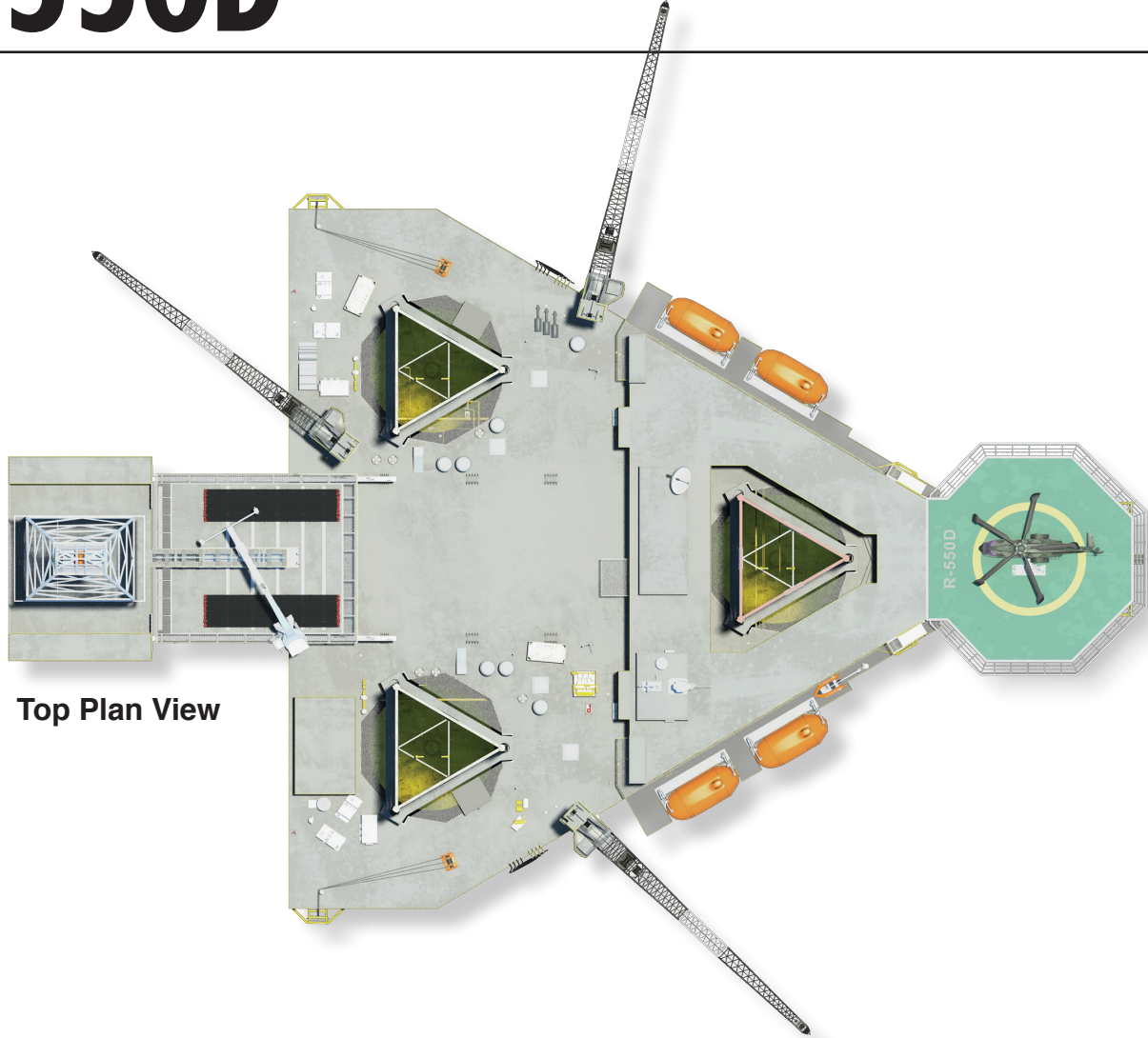
PRELOADING EQUIPMENT		
2 Preload Pumps	4,500 gpm	17,034 lpm
2 Sea Water / Preload Pumps	2,200 gpm	8,328 lpm

FULL ZERO DISCHARGE CAPABILITY	
<ul style="list-style-type: none"> Space for Cuttings Collection or Treatment Oil-Water Separator for Drains and Bilge All Drains Routable to Collection / Storage All Equipment with Closed Loop Cooling 	

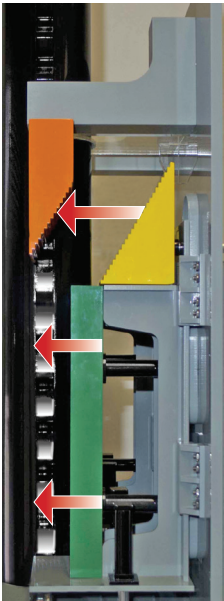
SERVICE TEMPERATURES		
For Steel: Service Temperature at	-4° F	-20° C
HVAC Ambient Range	-4° F to +122° F	-20° C to +50° C



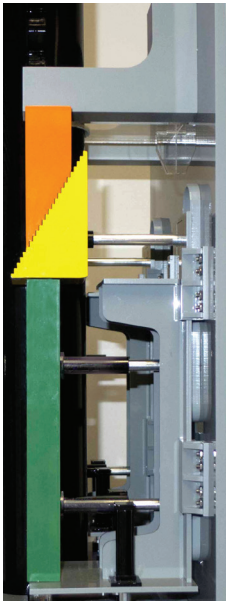
R-550D



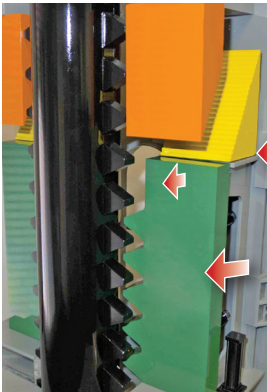
Top Plan View



Zenlock disengaged



Zenlock engaged

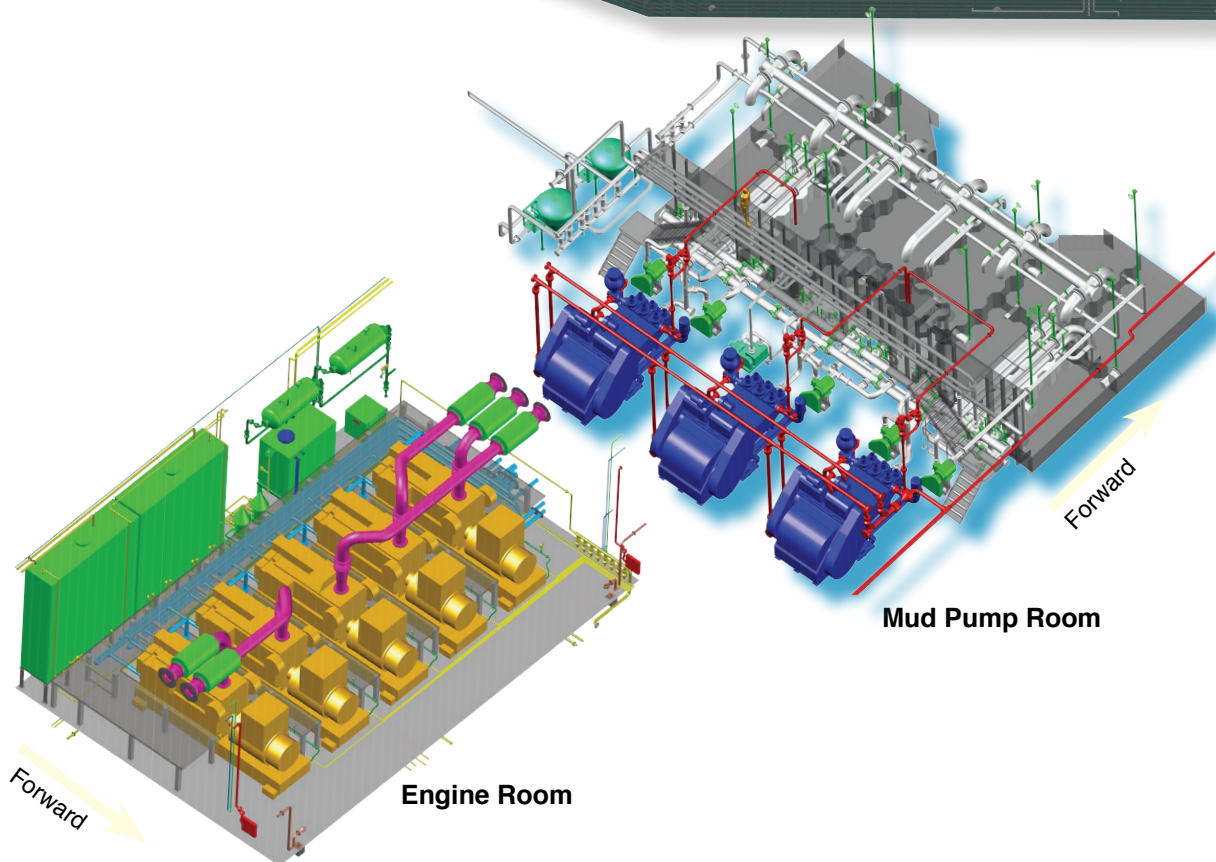
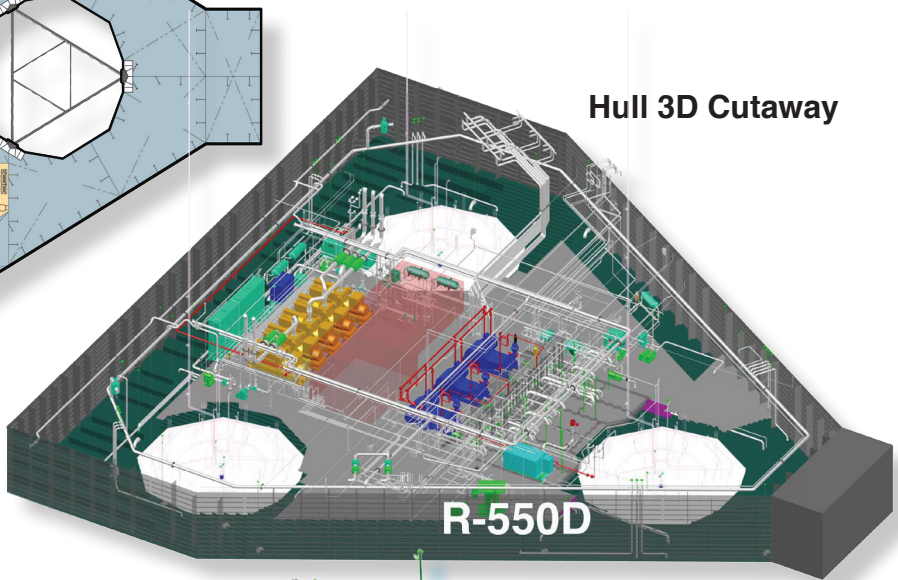
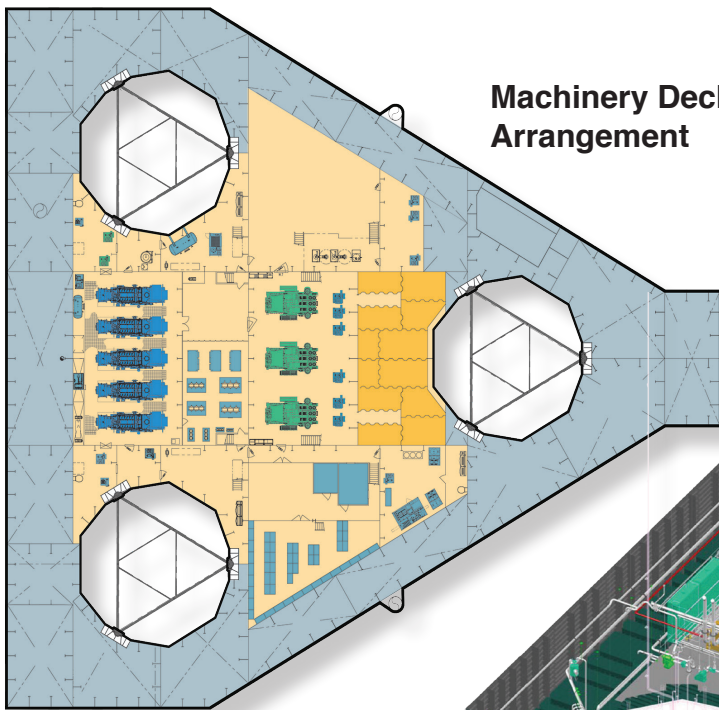


Zenlock disengaged

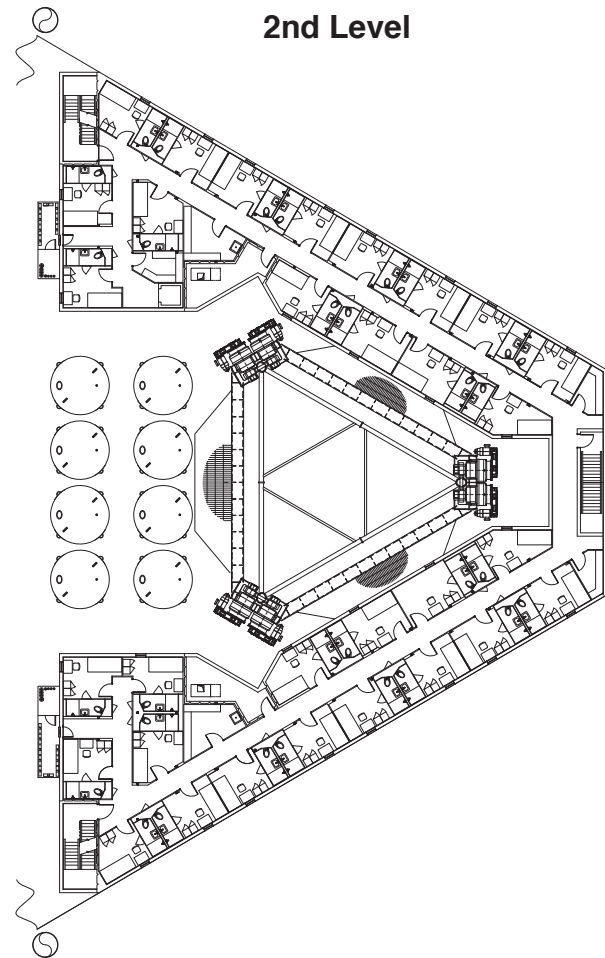
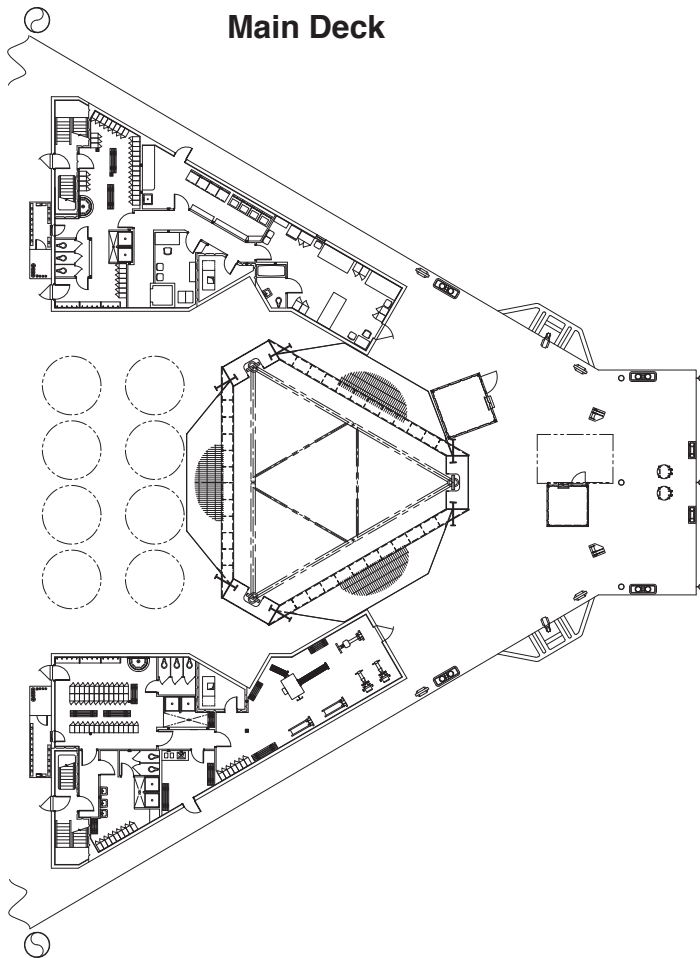


Zenlock engaged

R-550D



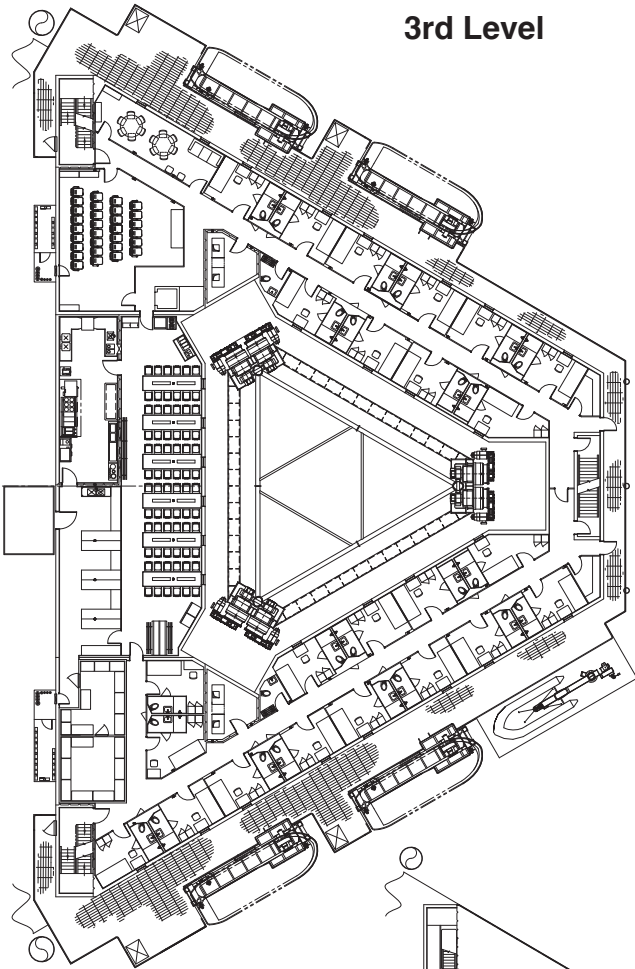
R-550D



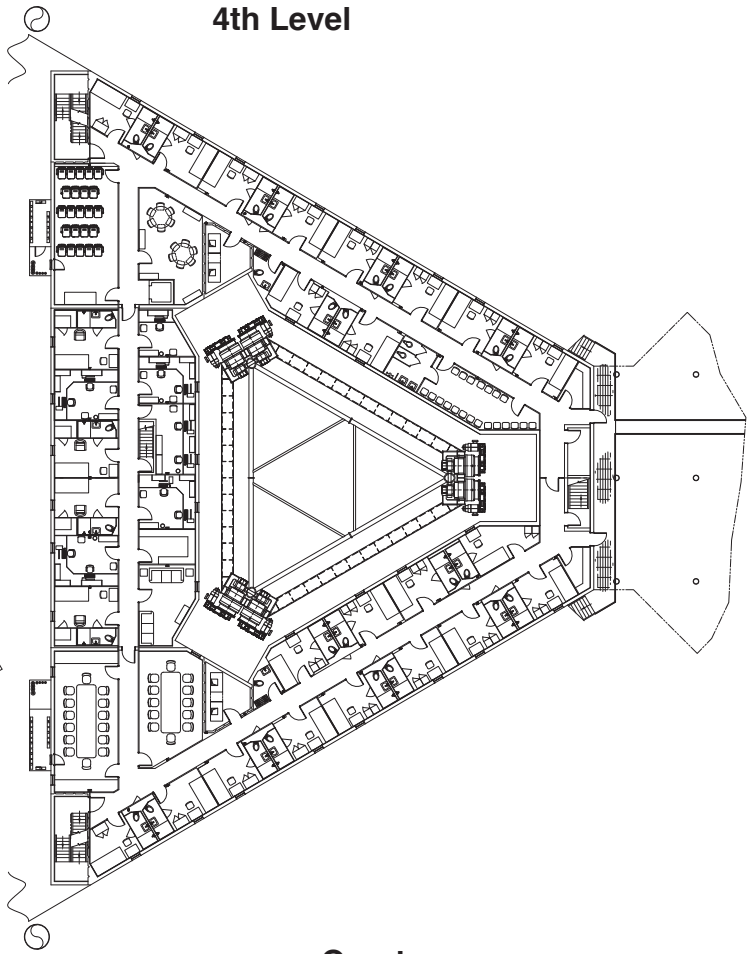
Level	1-Man Rooms	2-Man Rooms	Number of Men
1st Level (Main Deck)	0	0	0
2nd Level	0	31	62
3rd Level	0	24	48
4th Level	12	14	40
Helideck & Quarters Roof	0	0	0
Total	12 Rooms	69 Rooms	150 Men

R-550D

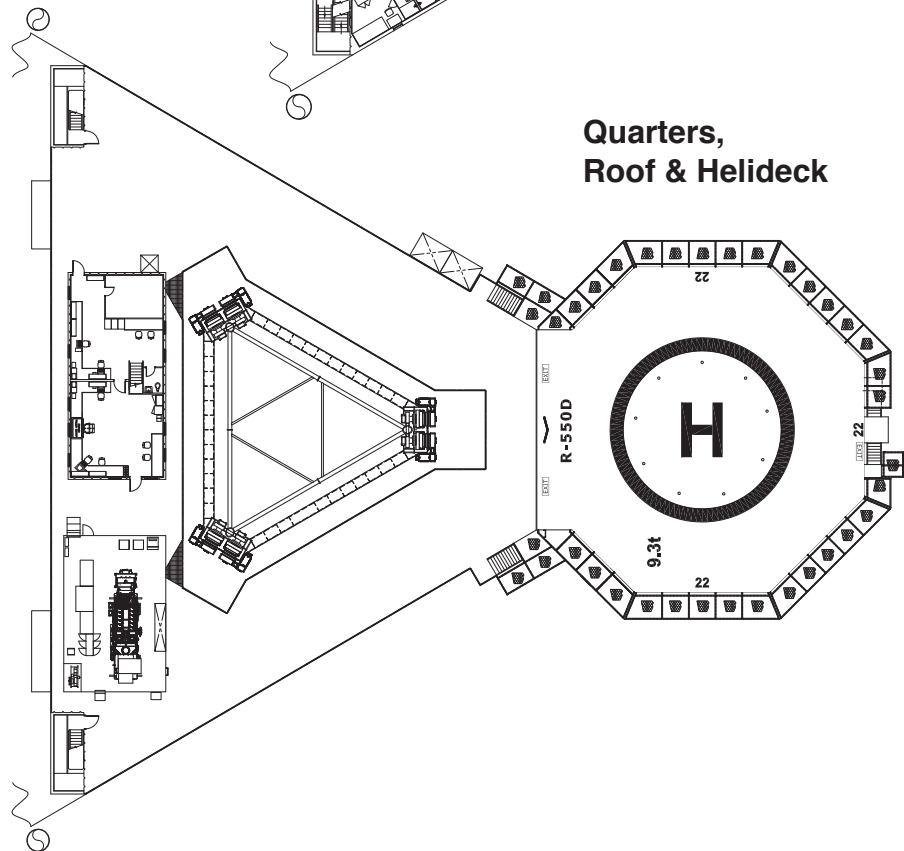
3rd Level



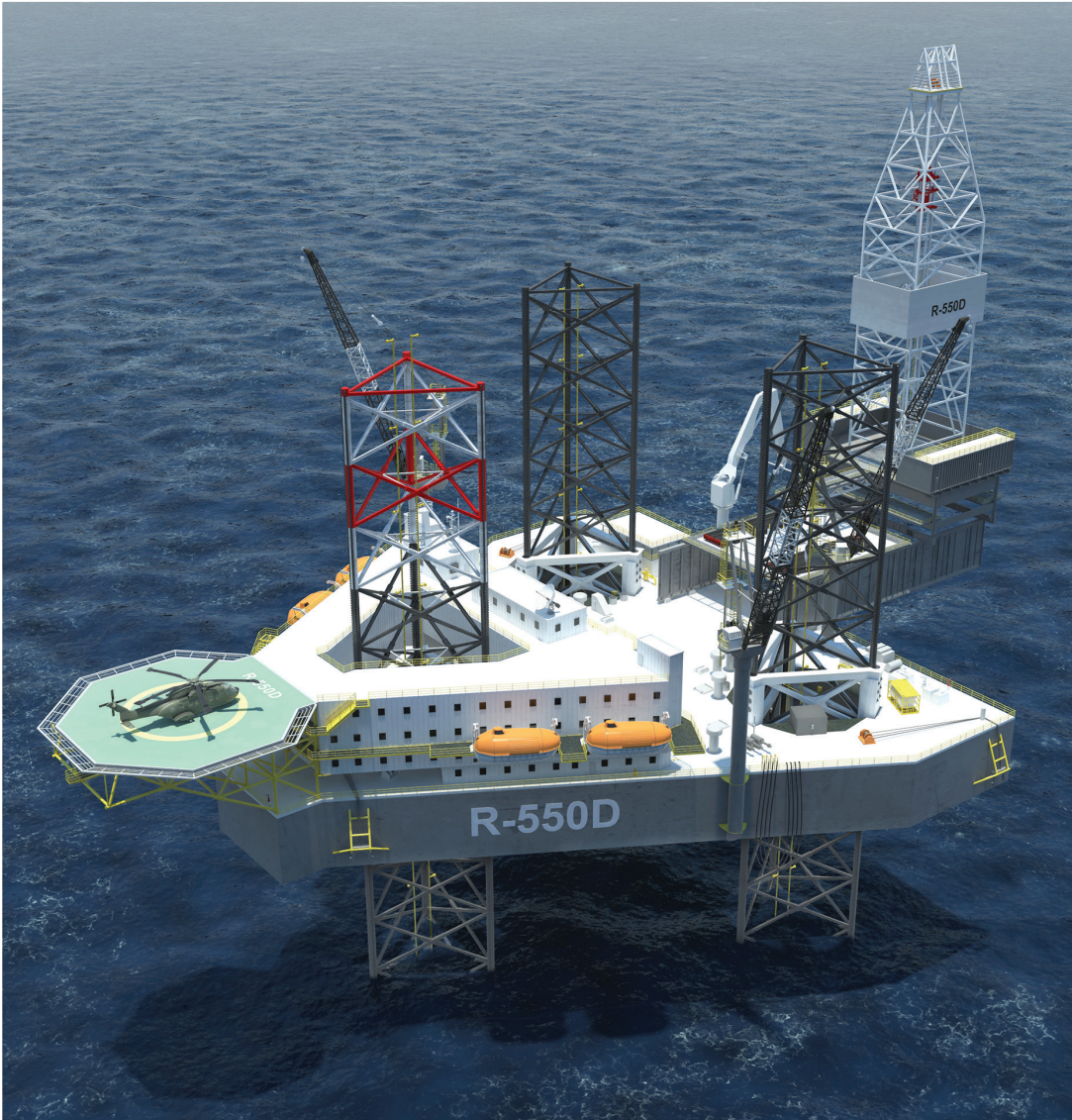
4th Level



Quarters,
Roof & Helideck



R-550D



Note: Specifications, dimensions & capacities are nominal and subject to change without notice.