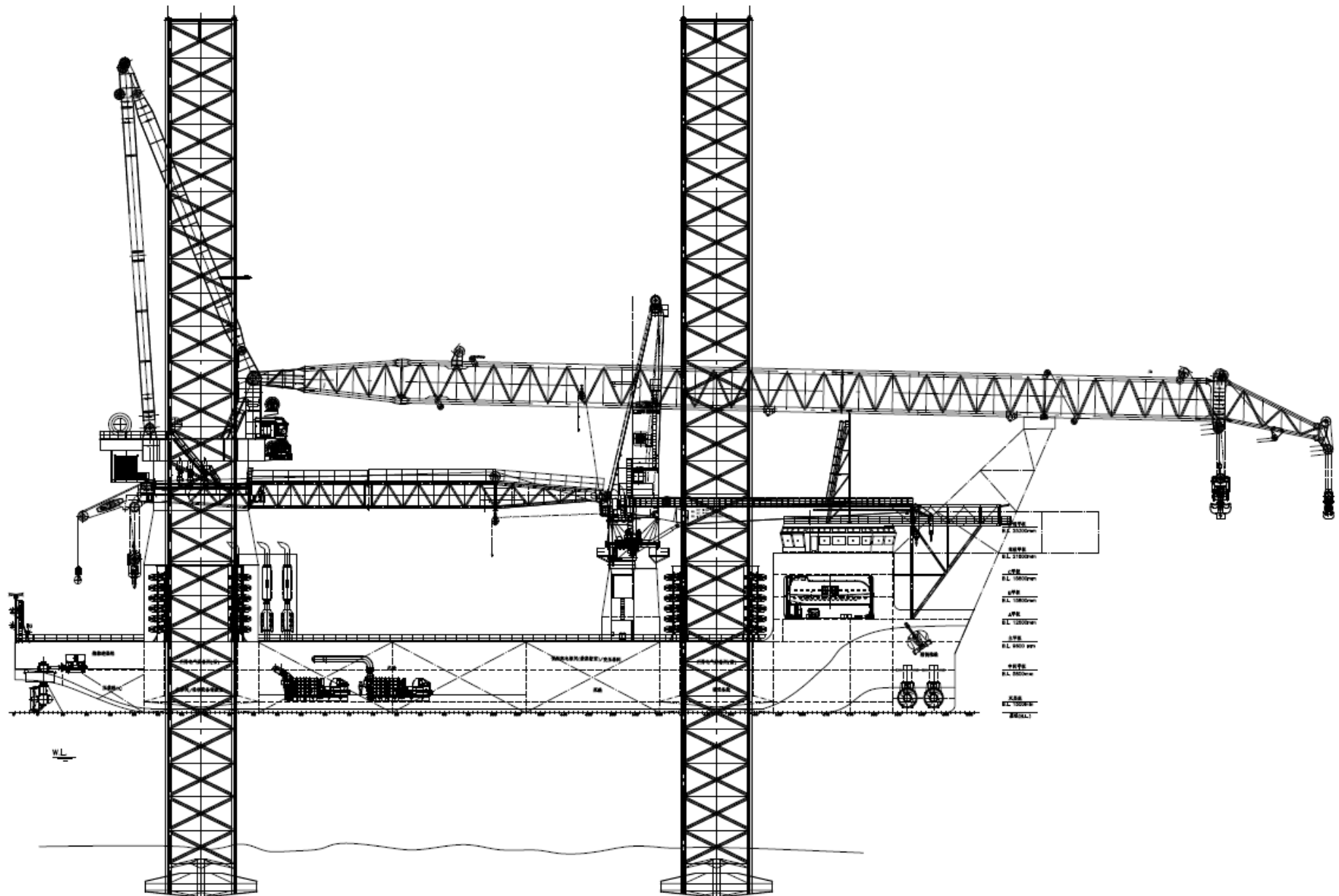


1600T Self-elevating Offshore wind turbine Service Unit



MAIN PARTICULARS

GENERAL DESCRIPTION

*This platform is a Self-elevating Wind Farm Construction Platform used for offshore wind farm installation. It consists of an upper hull, four legs, jacking system and lifting cranes. The designed **working water depth is 70m with lifting capacity of 1600 tons**, vessel meets the requirements of ocean dispatch and offshore operations. The accommodation provides spaces for catering and housekeeping for a crew complement of **120 persons**, and equipped with a **helicopter landing platform**. This platform is full electric power propulsion, includes **two sets 3000kW stern azimuth thrusters and two sets 2000kW bow tunnel thrusters**, and **DP1 Class Dynamic Positioning System**.*

CLASS NOTATION

CLASS : CCS

★CSA Self-elevating, Offshore Wind Turbine Service Unit, Lifting Appliance, Thruster, HELDK, PSPC(B), MCC,DP1;

PRINCIPAL PARTICULARS

Length over all	130.6 m
Breadth	48.0 m
Depth	9.6 m
Designed Draft	6.3 m
Accommodation	120 persons
LEG number	4 sets
LEG length	125 m
Designed speed	7 knots
Water depth	70 m
Variable load	6000 t

CRANE

MAIN CRANE	Main hoist capacity: 1600t@35m 1300t@45m
	Lifting heigh above deck 150m, total 175m
	Auxiliary hoist capacity: 400t@45m Lifting heigh above deck 170m, total 195m
AUXILIARY CRANE	600t@40m, Lifting heigh 75m above deck

LEGS AND JACKING SYSTEM

LEG TYPE	Truss-type leg
JACKING SYSTEM	Electric VSD,rack & pinion type
Number of pinions	total 144 sets, each 252t
Jacking speed (hull lifting)	27m/h

OTHER MAIN EQUIPMENTS

Main Generators	2500kW × 4sets
Habour/Em Generator	800kW × 1set
Stern Azimuth Thruster	3000kW ×2sets
Bow Thruster	2000kW ×2sets
LEG flushing pump	200m3/h@5MPa ×4sets
LEG flushing air bottles	4m3@3MPa × 4sets
Fresh water generator	20t/d × 2sets

SPECIAL DESIGN

- 1.Suitable for 10MW-20MW wind turbine units installation
- 2.Installed Ballast water treatment system
- 3.Installed CCTV system
- 4.Comfortable accommodation with 2.5m clear height cabins
- 5.Installed Fresh water generator and provision refrigerating system.